

VG Medical

VG Medical is a leading manufacturer of OR and ICU with various product lines of surgical light, operating table, medical supply unit and digital OR system, providing safe, effective and cost-saving solutions for modern hospitals. Optionally, additional features and changing of parameters or configuration can be performed & customized upon the individual customer's requests.

Model and Configuration

Model	COMFORT 300-519	COMFORT 300-519D
Table Length	2050mm	2050mm
Table Width	520mm	520mm
Lowest Height	650±20mm	550±20mm
Height Adjustment	450 mm	350mm
Trendelenburg	30°	30°
Rey-Trend	30°	30°
Tilt (Left)	20°	20°
Tilt (Right)	20°	20°
Slide	320mm	320mm
Backboard Upwards	75°	75°
Backboard Downwards	40°	40°
Leg board	+20 -90°	+20 -90°
Leg board Outwards	90°	90°
Head board	±45°	±45°
Kidney Elevator	120mm	120mm
Head Board	Dismountable	Dismountable
Leg Board	Dismountable	Dismountable

VG-8CHU-0016C

 COMFORT 300 Load capacity is 280KGS



VG Medical Technology Co.,Ltd.

Tel: +86-510-88816999

Fax: +86-510-88806999

Add: No. 35-201, Changjiang South Road, Xinwu District, Wuxi, Jiangsu - China.

Email: sales@vg-med.com

Web: www.vg-med.com

* Promotional material. Specifications maybe changed without notification. Please contact us for updated information



COMFORT 300

Electric Operation Table



QUALITY AND STANDARD

- Comply with IEC 60601-2-42, IEC 60601-1, IEC 60601-1-2 ;
- ISO 13485 certified by TUV;
- MDD 93/42 ;



PRODUCT FEATURES

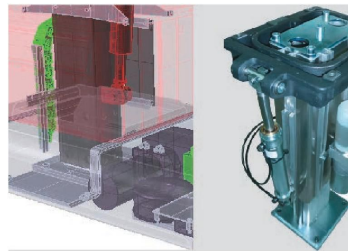
Germany made electro-hydraulic system, with strong lifting ability and high reliability, free maintenance for three years, dual controlling electric system, intelligent control, recovering with one button, Electric brake, easy to lock

The table top can moved more than 320mm by power-driven, table board is full radiolucent, comply with YY/T0737-2009 stander, it is easy for accessing of C-arm and X-ray, no shooting blind spots

SUS#304 stainless, anti-erosive, easy clean, rubber plastic molded dust cover

Multi-layer memory foam pad, high frequency weld, quick connection device, improve the safety and accuracy

Intelligent battery system with a large capacity battery, it is suitable for at least 100 surgical operations



Germany made electro-hydraulic system



Emergency controlling panel



Integrated kidney elevator



Stainless body and memory foam pad

SURGICAL POSITION

Orthopedic/Trauma surgery



Supine Position (imagery space is 1200mm)



Beach Chair Position



Prone Position (spine surgery)



Supine Position (Orthopedic)

General surgery

COMFORT 300 is suitable for surgical and examination with the high flexibility



Supine Position (cardiovascular)



Lateral Position (pelvis and spine surgery)



Supine Position (ENT/Neurosurgical—with head support)



Knee Position



Sitting Position (Neurosurgical—with skull clamp)

Urology/Gynecology

COMFORT 300 is suitable for different surgical position with the high flexibility



Urology/Gynecology Position



Calculus Position



Lateral Position



Supine Position

VG Medical

VG Medical is a leading manufacturer of OR and ICU with various product lines of surgical light, operating table, medical supply unit and digital OR system, providing safe, effective and cost-saving solutions for modern hospitals.



VG-BCHU-0025.A



GENERAL CATALOG OPERATING TABLE ACCESSORIES



VG Medical Technology Co.,Ltd.

Tel: +86-510-88816999

Fax: +86-510-88806999

Add: No. 35-201, Changjiang South Road, Xinwu District, Wuxi, Jiangsu - China.

Email: sales@vg-med.com

Web: www.vg-med.com



* Promotional material. Specifications maybe changed without notification. Please contact us for updated information



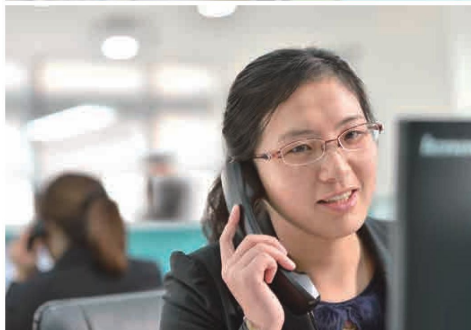
VG Medical was established in 1994, after more than 20 years of development, has grown into a global supplier of surgical solutions for the whole. Products covered operating table, surgical lamp, medical pendant and digital integrated operating room.

VG Medical not only has a complete surgical operating table product line, but also focus on the clinical practice, and integrated with various types of surgery study. Company developed operating table accessories to meet the needs of various types of surgery. After years of continuous development and improvement, the company took the lead in launch a full range of operating table accessories and positioning pad production line.

VG medical pursue higher quality standards, company adopted the German T U V I S O 1 3 4 8 5 quality system assessment. Products pass the ROHS directive and biocompatibility testing and rigorous testing by third parties to verify the EU and the United States to meet the requirements. Adopted the CE, SFDA product certification. Company products sol in more than 60 countries and regions

VG Medical focus on customer satisfaction. Company has a professional regular sales team and after-sales service team. The company has a sound service management system and sales service network; customers can be provided , training, sales and service. Products listed in the catalog can be adjusted on customer requirement.

Create by heart. VG medical. We are committed to provide safe quality products and satisfactory service.



CONTENTS



Anesthesia Frame & Binding Strap & IV Rod	-----01 02
Hand Support & Leg Support	-----03 04
Skull Clamp & Head support & Leg plate	-----05 06
Body Support & Shoulder Support & Accessories Cart	-----07 08
Clamps	----- 09
Waste Basin & Sponge Position Pad	----- 10
Accessories for Standard Configuration & Orthopedic tractor	-----11 12

Anesthesia Frame & Binding Strap & IV Rod



#1601.0140

L type Anesthesia Frame

- Use to place curtain
- It's composed of stainless steel anesthesia frame and clamp welded together

Main features

- Use high quality su304 stainless steel
- Fixed type, no need equip with clamp



#1601.0269

Body Binding Strap

- Use to fix patient's body
- It's composed of binding strap and fixed buckle

Main features

- Use high quality su304 stainless steel
- Size: 520x160 (mm) ;
- Length of Strap: 1140mm
- Install on the side rail



#1601.0295

Standard Anesthesia Frame

- Use to place curtain
- Able to adjust the height, The curtain frame is stretchable

Main features

- Use high quality su304 stainless steel
- Install on the side rail, clamp sold separately



#1601.0170

Arm hanging belt

- Use to hang patient's arm
- It's composed of hanging belt and buckle
- It can be adjusted up-down, left-right

Main features

- Use high quality su304 stainless steel
- Install on the side rail, clamp sold separately



#1404.0000

Luxurious Anesthesia Frame

- It's able to make support surface through supporting arm
- The height is adjustable

Main features

- Use high quality su304 stainless steel
- Install on the side rail, clamp sold separately



#1601.0150

Hand Binding Strap

- Use to fix patient's arm
- It's composed of hand binding strap and support buckle

Main features

- Use high quality su304 stainless steel
- Install on the side rail



#1601.0305

Adjustable IV Rod

- Swingable IV rod
- Use to hang infusion bags and bottles
- It can swing freely, height is adjustable

Main features

- Use high quality su304 stainless steel
- Adjustable height range 800mm-1500mm
- Install on side rail, including clamp



#FJ-36

Leg Binding Strap

- Use to fix patient's leg
- It's composed of binding straps for leg and leg board

Main features

- Use high quality su304 stainless steel
- Install on the side rail



#1406.2000

Arm Rest (Low Position)

- Use to support and fix patient' s arm
- It' s composed of arm rest, arm rest adopter, adjustable clamp and pad
- The angel can be adjusted by itself
- It can be adjusted the width and height vertically and horizontally
- With two hand binding traps to fix arm

Main features

- Use high quality su304 stainless steel
- Inside of pad is soft sponge
- Thickness of pad : 60mm
- Install on side rail, including two hand binding straps, clamp sold separately



#1510.1000

Extension Board (Pelvis)

- Mainly used to extend the electric operating table
- It' s composed of Radiolucent board and support frame

Main features

- To use high quality su304 stainless steel and Radiolucent board
- Apply to COMFORT 300 operating table
- Extension Board Dimension: 524x250 (mm)



#1406.1000

Arm Rest (Lateral Position)

- Use to support and fix patient' s arm
- It' s composed of supporting rod, supporting board and pad
- The angel can be adjusted itself, and the height as well.
- With two hand binding traps to fix arm

Main features

- Use high quality su304 stainless steel
- Inside of pad is soft sponge
- Thickness of pad : 60mm
- Install on side rail, including two hand binding straps, clamp sold separately



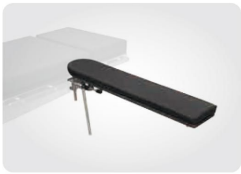
#1513.0002

Hand Protector

- Mainly use to protect patient' s body and arm
- Use high quality stainless steel

Main features

- Inside of liner is soft sponge
- Dimension: 460x150x130 (mm)
- Install on the side rail



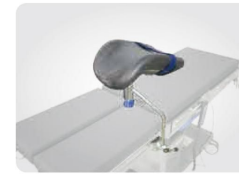
#1601.0186

Height Adjustable Arm Rest

- Use to support and fix patient' s arm
- It' s composed of supporting rod, supporting board and pad
- It can rotate freely, height is adjustable
- With two hand binding traps to fix arm

Main features

- Use high quality su304 stainless steel
- Inside of pad is soft sponge
- Thickness of pad : 60mm
- L x w : 660x140 (mm)
- Install on side rail, including two hand binding straps, clamp sold separately



#5737.0001

Luxurious Lithotomic Leg Support

- bigger size
- adjustable freely
- with binding strap

Main features

- Use high quality su304 stainless steel
- Its sponge with leather, soft and cozy
- Install on side rail, clamp sold separately



#1508.0000 /1601.0270

Arm Surgery Assistant Board /Carbon Fiber Surgery Board

- Use to support and fix patient' s arm
- It' s composed of supporting frame, supporting board and pad
- Radiolucent

Main features

- Use high quality su304 stainless steel and radiolucent board (Carbon fiber is optional)
- Inside of pad is soft sponge
- Thickness of pad : 60mm
- L x W : 800x350(mm)
- Install on side rail ,need equip with another tow clamps(#1402.2000)



#1601.0051

Leg Hanging Frame

- Use to support and fix patient' s leg and hand
- it' s composed of supporting frame and hanging strap
- Height is adjustable
- It rotate freely

Main features

- Use high quality su304 stainless steel
- Install on side rail, clamp sold separately

Skull Clamp & Head Support & Leg Plate



#1507.0000

Head Support for Ophthalmology Surgery

- Use to support patient' s head
- meanwhile support surgeon' s arm
- It' s composed of support frame, head support and radiolucent board
- The height of support frame is adjustable

Main features

- Use high quality su304 stainless steel
- Inside of head support is soft sponge



#1413.1200 (1413.0100)

Head Support Adaptor

- Use to equip with 1514.0000 head support
- It' s composed of support frame and locking handle
- Provide different type of head support interchange on operating table

Main features

- Use high quality su304 stainless steel
- 1413.1200 (for YS-3)
- 1413.0100(for 300)



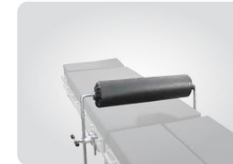
#1601.0380

Skull Clamp (Neurosurgery)

- Use to fix patient' s head when operate neurosurgery
- It' s composed of Main body, skull fix frame and spur shape head support
- Able to rotate freely

Main features

- Use high quality Aluminum
- Install on the bridge support (Neurosurgery support)



#0702.0038

Cylinder Buttock Support

- Use to support patient' s buttock and leg
- It' s composed of support frame and buttock support

Main features

- Use high quality su304 stainless steel
- Inside of buttock support is soft sponge
- Install on the side rail, clamp sold separately



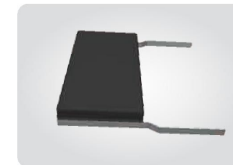
#FJ-82-00

Bridge Support (Neurosurgery support)

- It support skull clamp to fix patient' s head
- It' s composed of bridge support and locking handle
- able to adjust the height

Main features

- Use high quality su304 stainless steel
- Install on the side rail, clamp sold separately



#FJ-09-00

Leg plate

- Use to support patient' s leg
- It' s composed of support frame and leg plate

Main features

- Use high quality su304 stainless steel
- Inside of leg plate is soft sponge
- Liner pad dimension: 280x270x60 (mm)
- Install on the side rail, clamp sold separately



#1514.0000

Double Joint Head Support

- Use to support patient' s head
- It' s composed of supporting frame and head support
- Able to freely adjust the height of joint

Main features

- Use high quality su304 stainless steel
- Inside of head support is soft sponge
- its be used with 1413.0100/1413.1200 head support adopter



#1601.0061

Leg Plate (Pair)

- Use to support and fix patient' s leg
- It' s composed of supporting frame and liner pad
- able to rotate freely

Main features

- Use high quality su304 stainless steel
- Inside of liner pad is soft sponge
- Liner pad dimension: 280x270x60 (mm)
- Install on the side rail, including clamp

Body Support & Shoulder Support & Accessories Cart



#1601.0125

Economic body support

- Use to support or fix patient's body
- It's composed of body support and support rod
- The height can be adjusted

Main features

- High quality su304 stainless steel
- Inside of liner is soft sponge
- Liner size: 215x100x60(mm)
- Install on the side rail, clamp sold separately



#1518.0000

Standard shoulder & body support

- Use to support or fix patient's shoulder and body
- The height can be adjusted
- 360° rotation is adjustable

Main features

- High quality su304 stainless steel
- Inside of liner is soft sponge
- Liner size: 215x100x60(mm)
- Install on the side rail, clamp sold separately



#1601.0315

Luxurious shoulder support

- Use to support or fix patient's shoulder
- It's composed of shoulder support and support rod
- The height can be adjusted

Main features

- High quality su304 stainless steel
- Inside of liner is soft sponge
- Liner size: 215x100x60(mm)
- Install on the side rail, clamp sold separately



#1407.2000

Shoulder Support

- Use to support or fix patient's shoulder.
- The height can be adjusted.

Main features

- Use high quality su304 stainless steel
- Easy to clean and disinfect
- Length≥300mm, Width≥300mm, Height≥90mm, Load capacity:10Kg



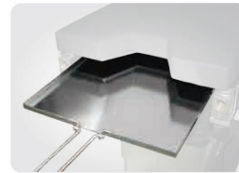
#1601.0096-A

Luxurious body support A

- Use to support or fix patient's shoulder and body
- It's composed of liner support and support rod
- The height can be adjusted
- 360° rotation is adjustable

Main features

- High quality su304 stainless steel
- Inside of liner is soft sponge
- Liner size: 215x100x60(mm)
- Install on the side rail, clamp sold separately



#0702.0076

X-ray Cassette Tray

- It's composed of X-ray cassette and handle

Main features

- Use su304 stainless steel
- X-Ray Cassette Dimension: 450x400 (mm)



#1601.0096-B

Luxurious body support B

- Use to support or fix patient's body
- It's composed of body support and support rod
- The height can be adjusted
- 360° rotation is

Main features

- High quality su304 stainless steel
- Inside of liner is soft sponge
- Liner size: 215x100x60(mm)
- Install on the side rail, clamp sold separately



#1504.0000

Accessories Cart

- Mainly use to place table accessories
- It's composed of main frame and mobile castors
- Able to 360° rotation freely

Main features

- Use su304 stainless steel
- With self locking castors

Clamp



#1402.0000

Non-adjustable Clamp

- Use to fix round or square surgical accessories
- It's composed of Clamp and handle
- Accessories position cannot be adjusted

Main features

- Use high quality SU304 stainless steel
- Applicable to $\Phi \leq 16\text{mm}$ round rod accessories and profile $\leq 6 * 25\text{mm}$ rectangular accessories
- Install on the side rail



#1401.0000

Adjustable Clamp

- Use to fix operating table accessories
- It's composed of Clamp and handle
- It can be adjusted freely

Main features

- Use high quality SU304 stainless steel
- It can fix $\Phi \leq 16\text{mm}$ round rod accessories
- Install on the side rail



#1402.2000

Square Clamp

- Use to fix operating table accessories
- It's composed of Clamp and handle
- It cannot be adjusted

Main features

- Use high quality SU304 stainless steel
- Applicable to $\Phi \leq 16\text{mm}$ round rod accessories and profile $\leq 6 * 25\text{mm}$ rectangular accessories
- Install on the side rail



#1601.0026

Square Pipe Clamp

- Use to fix operating table accessories
- It's composed of clamp and handle
- It can be adjusted freely

Main features

- Use high quality SU304 stainless steel
- Fix 25mmx25mm square pipe
- Install on the side rail

Waste Basin & Sponge Position Pad



#1404.3000

Stainless Steel Waste Basin

- Use to contain surgery waste



#1415.0008

Prone Position Pad (Sponge)



#1409.0000

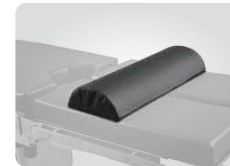
Single Side Instrument Basin Rack

- Use to place instrument basin
- It is used with instrument basin 1409.0001



#1415.0003

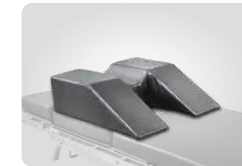
Knee Position Pad (Sponge)



#1415.0004

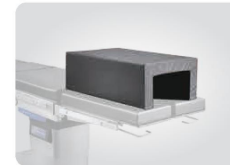
Semi-round Pad (Sponge)

- To be used under the knee



#1415.0005

Head and Shoulder Pad (Sponge)



#1415.0006

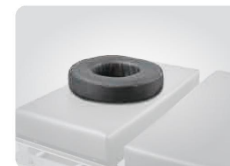
Lateral Position Leg Pad

- Tunnel Pad



#1415.0007

Lateral Position Pad (Sponge)



#1415.0001

Head Ring



Arm Rest Hand Binding Strap

- Adjustable by joint adaptor, flexible and meet different patient's surgical position.
- Easy to clean and disinfect

#1406.0000/1503.1000

Main features

- Use high quality su304 stainless steel
- Thickness of pad: 60mm
- Load capacity:20Kgs



Economic Lithotomic Leg Support

- Use to support patient's leg
- It's composed of supporting rod, leg pad
- it rotate freely

#1505.0000

Main features

- Use high quality su304 stainless steel
- The leg pad is made of polyurethane foam
- Install on side rail, clamp sold separately



Body Binding Strap

- Use to fix patient's body
- It's composed of binding strap and fixed buckle

#1503.0000

Main features

- Install on the side rail
- Use high quality su304 stainless steel



IV Rod

- It is suitable for hanging infusion bags and bottles
- It can swing freely.

#1404.1000

Main features

- Use high quality su304 stainless steel
- Easy to clean and disinfect
- Load capacity: 5Kg



Orthopedic tractor #1102.0000

Main features

The table top elevation displacement of the orthopedic tractor is 350 mm. It can be adjusted according to the elevation displacement of the operating table, which is favorable for the medical personnel to operate and use.

The pelvis support plate and pad and the perineum pillar are both made of nonmetallic material, which will not influence the X-ray shooting. During operation, the pad will not be moved. At the same time, the pelvis support plate and pad can be dismantled in order to radiograph, fix film carrier, clean and to disinfect.

The orthopedic tractor can be stretched from 0 to 700 mm.

The maximal carrying capacity is 160 kg.

The maximal traction displacement is 180 mm and the maximal traction power is 400 N.

The orthopedic tractor can be folded outside and inside in order to meet the needs of all surgeries.

The safety design of the orthopedic tractor is in accordance with the general require for safety of Medical Electric Equipment GB9706.1-2007.

The orthopedic tractor can be used more than 5 years.



arthroscopy

