

Pumps: RDB 65-20A 2C22 B000 3**Item:****LIQUIDO**

Liquid	CONDENSATE		Liquid Temperature	75	
Liquid	CLEAN, NO SOLIDS		Density	1,00	kg/dm ³
Liquid	-		Kinematic Viscosity	1,0	mm ² /s

DESIGN PARAMETER

Working Capacity	90,0	m ³ /h	Working Absorbed Power	18,98	kW
Working Head	54,8	m	Nominal Working Speed	-	1/min
Required Capacity	90,0	m ³ /h	Service	-	
Required Head	55,0	m	Suction Conditions	-	
Max. Capacity	144,2	m ³ /h	Geodetic Suction Head	-	
Min. Capacity	19,6	m ³ /h	Gauge Suction Pressure	0,00	bar
Max. Head	63,1	m	Minimum ambient temperature	-20	°C
NPSH available	0,00	m	Altitude of Installation	<1000 m ASL	
NPSHr (Required from the pump)	3,06	m			
Efficiency at Working Point	70,8				

PUMP DETAILS

Pump Standard	ISO 2858/ISO 5199		Flange Face Finish	RF - Flanged with Raised Face	
Pump Designation	RD		Rated Impeller Trim	A	
Pump Size	65-20		Impeller Type	Closed	
Pump Group	2		Rated Impeller Diameter	209	mm
Installation area	Safe Area		Maximum Impeller Diameter	209	mm
Atex Category	Safe Zone		Minimum Impeller Diameter	170	mm
Design Pressure	16	bar	Solids Free Passage [mm]	N.A.	
Hydrostatic Test Pressure	24	bar	Casing Drain Hole	3/8 G	
Suction Port Diameter [DN]	100		Casing Venting Hole	1/4 G	
Discharge Port Diameter [DN]	65		Painting Cycle	STD-RAL5010-Poliacr.cat.	
Pump Flanges Norm	EN 1092 PN16		Pump RAL	5010	

PUMPS EXECUTION

Pump Configuration	Horizontal		Coupling Type	MFR Standard	
Pump Execution	On base With STD Flex. Coupl.		Coupling Spacer	Without Spacer	
Bearing Size/Arrangement	STD		Spacer length	0	mm
Bearing Lubrication Type	Oil		Motor Shaft diameter	48	mm
Bearing Housing Oil Capacity	0,56 l		Shaft Diameter Drive side	32	mm
Bearing Temp. Probes	Not Included		Baseplate Code Number	3	
Constant Level Oiler	Not Included		Base-Plate Drain Pan	Not Included	
Transmission Type	Flex Coupling				

PUMPS MATERIALS

Pump Casing Material	EN1.4408-A351 CF8M-AISI 316		Wear Ring Material	EN1.4404-A351 CF3M-AISI 316L	
Impeller Material	EN1.4408-A351 CF8M-AISI 316		Gasket Main Material	SIL C-4400	
Shaft Material	EN1.4404-A351 CF3M-AISI 316L		Base-Plate Material	Carbon Steel	
Shaft Sleeve material	EN1.4404-A351 CF3M-AISI 316L		Coupling Material	Cast Iron	
Wear Plate Material	Not Present				

MECHANICAL SEALS

Seal Execution	Packing Without Flushing		Cartridge Type	-	
Mechanical Seal Nominal Diamet	43	mm	Cartridge Seal Brand	-	
Seals Supply	N.A.		Cartridge Internal Code	999	
Mech. Seal Type (Pump Side)	-		Cartridge Seal	-	
Mech. Seal Pump Side Brand	-		API PLAN	Not Present	
MFR Internal Mech. Seals Code	000		Plan Pipes material	N.A.	
Mechanical Seal fluid side	-		Flushing Pressure	Ext. Flushing not required	
Mech. Seal Pump Side Pin	Not Available		Flushing Tank	Not Present	
Mech. Seal Type (Flush. Side)	-		Flushing Tank Supply	Tank Not Included	
Mech. Seal Motor Side Brand	-				
Mechanical Seal Motor side	-				
Mech. Seal Motor Side Pin	Not Available				

EXTRA

Heating/Cooling Casing Chamber	Not Present		Pump Casing Treatments	Not Present	
Seal Heating Jacket	Not Present		Pump Impeller Treatments	Not Present	
Heat Exchanger	Not Present		Special Pump Treatments	Not Present	
			Special Casing Execution	Not Present	

MOTOR

Electric Motor Brand	FELM		Motor Class Tolerances	NO - Standard Class	
El. Motor Serie	F3		Additional Fan Cooling	-	
Electric Motor Poles	2		Motor Roof	-	
Motor Power	22,00	kW	PT100 Probes	-	
Motor Size	180M		Auxiliary Electric Box	-	
El. Motor Flange Diameter	350		Motor Heaters	-	
Electric Motor Supply	Included		Heaters Voltage [V]	-	
El Motor Standard/Customized	Standard		Ambient Temp. < -20°C	-	
Motor Category	IEC (not ATEX)		Working Temp. >40°C	-	
Std. Electric Motor Brand	FELM		Motor Casing Material	Cast Iron	
Nominal Motor Frequency	50	HZ	Downsized Motor	-	
Operating motor voltage	400/690		Derated Engine Power	-	kW
Motor Efficiency Class	IE3		Additional Label	-	
Motor Shape	B3		Insulated Ball Bearing for VFD	-	
Motor Protection	IP55		Motor Extras	-	
Insulation Class	F		Extras	-	
PTC	Included		Extras	-	
Number of PTC Required	-		Extras	-	
Max Frequency (Inverter Use)	60		Extras	-	
Min. Frequency (Inverter Use)	30				

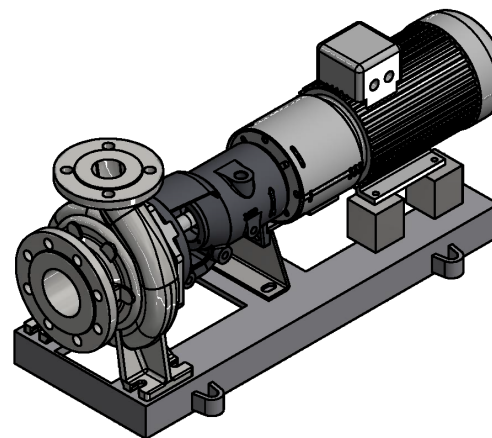
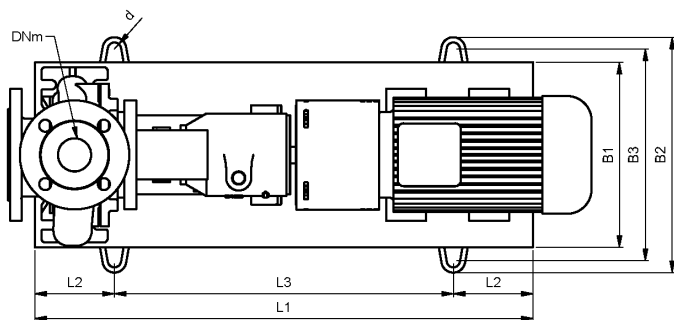
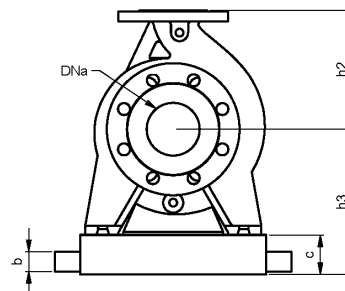
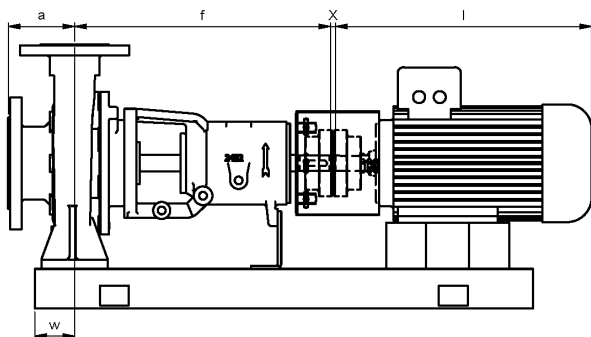
TEST AND CERTIFICATES

Food Certificate	No Certification Issue		NPSH Test	N	
ATEX Declaration of Conformity	N		Noise Test	No Certificate Issue	
Impeller Balancing Certificate	No Certificate Issue (P-1006)		Painting Check	No Certificate Issue	
CE Declaration of Conformity	S		Certificate of Quality	N	
Drawing Acc.To Customer Spec.	N		End Supply Certification Book	No	
Certificate of Warranty	N		Performance Test (Q-H-P)	No Certificate Issue	
Hydrostatic Test	No Certificate Issue (P-1005)		Visual a Dimensional Check	No Certificate Issue (P-1012)	
Inspection and Test Plan	No		Vibration Test	No Certificate Issue	
Material Certificate	-		Working Conformity Certificate	N	
Mechanical Running Test	N				

CONFIDENTIAL AGREEMENT

NO PART OF THIS REPORT MAY BE REPRODUCED AND TRANSMITTED IN ANY FORM OR ANY MEANS WITHOUT PRIOR WRITTEN PERMISSION OF SR pumps.
THIS DOCUMENT MAY BE USED ONLY AS A PIECE OF CONFIDENTIAL TECHNICAL REFERENCE AND NEVER AS AN OFFICIAL DOCUMENT AGAINST SR pumps INTEREST.

NOTE:



Serie	Size	Mot. Size	a	f	h3	h2	L1	L2	L3	B2	B3	w	d	b	c1	c2	l1	l2	T(a)	Weight
RD	65-20	180M	100,00	500,00	300,00	225,00	1.200,0	205,00	790,00	450,00	410,00	75,00	19,00	30,00	0,00	0,00	145,00	167,00	1.235,0	308,30

Ref.Speed (rpm) 2.980

ITEM: RD_65-20_Rpm2980_Ø209 180523_1413

Curve n.: T-1351	Max Diameter (mm): 209	Min Diameter (mm): 170	Sel. Diameter (mm): 209	Material: S.STEEL/SPEC.ALLOYS
Flow (m3/h): 90	Head (m): 54,79	Power (kW): 18,98	Efficiency (%): 70,81	NPSH (m) 3,06
Density (kg/dm3): 1	Viscosity (cSt): 1,00	Fluid: Non Specificato	Impeller Type: CLOSED	

