

2°C~8°C Pharmacy/Lab Refrigerator

New Product

Intelligent Control & Constant Temperature

Multiple Alarms Bring More Security



YC-650CL

Real Air Cooling

The multi-duct vortex refrigeration system and finned evaporator can prevent frosting completely and improve temperature uniformity to a large extent.

Real Energy Saving

The refrigerator is equipped with "M + Energy Core" power management system and complete air cooling design, improving energy saving efficiency by more than 40%.

Real Visibility

The electrical heating + LOW-E design with double considerations can achieve a better anti-condensation effect for the glass door.

Real Safety

6 temperature probes can ensure high precision of temperature control with nearly no fluctuation and thus can improve safety.



Intelligent Temperature Control

· 7-inch HD intelligent display touch screen, user-friendly interface and more accurate temperature control, with Bluetooth, Wi-Fi and other functions, more convenient operation and more comprehensive functions;



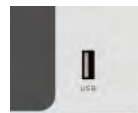
Security System

· The well-developed audible & visual alarm system with multiple audible & visual alarm functions: high temperature alarm, low temperature alarm, sensor failure alarm, door ajar alarm, power failure alarm etc;
· The turn-on delay and stopping interval protection function can ensure reliability in running;
· The door is equipped with a lock, preventing it from opening accidentally.
· Refrigerator programmed to alarm again if alarm event still existed 30mins after Mute-on, this can help avoid any unknown alarm event to happen.



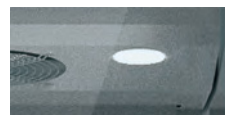
Refrigeration System

Equipped with a compressor supplied by an international famous Secop brand, high-efficiency air-cooled condenser and finned evaporator, ensuring fast refrigeration.



Data Storage

· Equipped with a USB export interface, which can be used for exporting data in PDF.
· When a U-disk is connected, temperature data can be stored continuously and automatically (data can be stored for more than 10 years);
· The printer is optional.



Lighting System

Equipped with lighting system with LED lights, ensuring high visibility inside the cabinet.



Human-oriented

· Equipped with high-quality shelves made from PVC-coated steel wire, which are easy to clean;
· Aluminum door handle, easy to open, easy to move.
· Equipped with testing port, bringing convenience to users in testing temperature inside the cabinet.

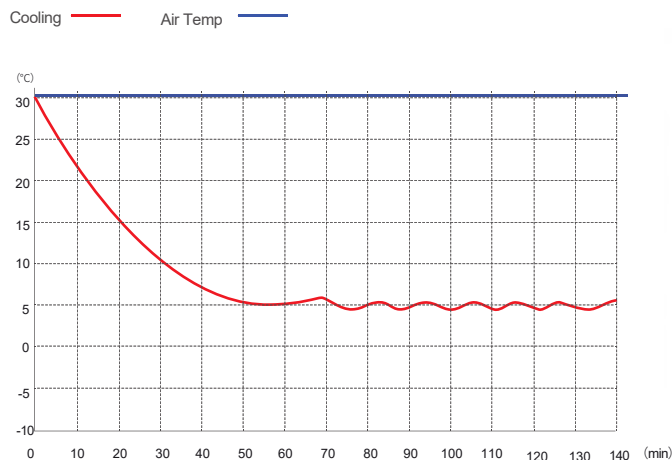
Optional chart recorder

· This technology provides you with temperature recorders without electronics.
· No power supply is required.
· European imported brand, durable and reliable

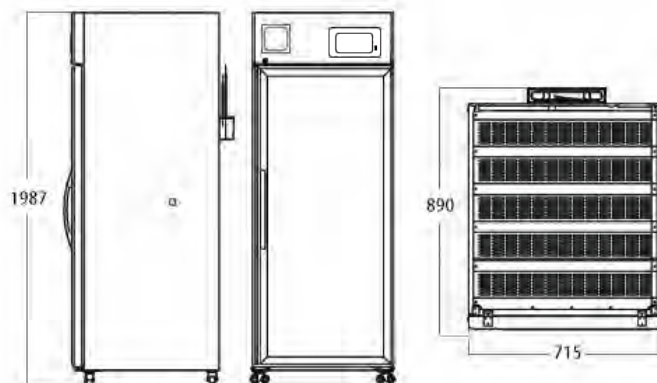
✓ Scope of Application

Suitable for storage of biological products, vaccines, drugs, reagents, etc. Suitable for use in pharmacies, pharmaceutical factories, hospitals, centers for disease prevention & control, clinics, etc.

🔗 Performance Data / Cooling Curve



📏 External Dimensions



| 2~8°C Pharmacy Refrigerator | |
|--------------------------------------|--|
| Model | YC-650CL |
| Cabinet Type | Upright |
| Capacity(L) | 650 |
| Internal Size(W*D*H)mm | 605*725*1515 |
| External Size(W*D*H)mm | 715*941*1985 |
| Package Size(W*D*H)mm | 773*947*2153 |
| Performance | |
| Temperature Range | 2~8°C |
| Ambient Temperature | 16-32°C |
| Cooling Performance | 5°C |
| Climate Class | N |
| Controller | Microprocessor |
| Display | HD intelligent Touch screen |
| Refrigeration | |
| Compressor | 1pc |
| Cooling Method | Air cooling |
| Defrost Mode | Automatic |
| Refrigerant | R290 |
| Insulation Thickness(mm) | 55 |
| Construction | |
| External Material | PCM |
| Inner Material | Aluminum plate with spraying/Stainless steel(optional) |
| Shelves | 7(Pulling drawers) |
| Door Lock with Key | Yes |
| Lighting | LED |
| Access Port | 1pc. Ø 25 mm |
| Casters | 4 (2 casters with brake) |
| Data Logging/Interval/Recording Time | USB/Record every 5 minutes / 10 years |
| Door with heater | Yes |
| Alarm | |
| Temperature | High/Low temperature, High ambient temperature |
| Electrical | Power failure , Low battery |
| System | Sensor failure, Door ajar , Communication failure, Condenser overheating |
| Electrical | |
| Power Supply(V/Hz) | 220-240 ~ 50/60 |
| Rated Power(W) | 430 |
| Power Consumption(KWh/24h) | 4.73 |
| Rated Current(A) | 3.06 |
| Accessory | |
| Standard | RS485, Remote alarm contact, Backup battery |
| Options | Printer, Chart Recorder |

*The model, parameters and performance specified in this brochure may be changed without prior notice because of product upgrading.

*There may be differences between the product images shown in this brochure and the actual products. When you are buying any product, please check the actual product.