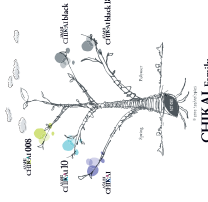


# ASAHI CHIKAI Family

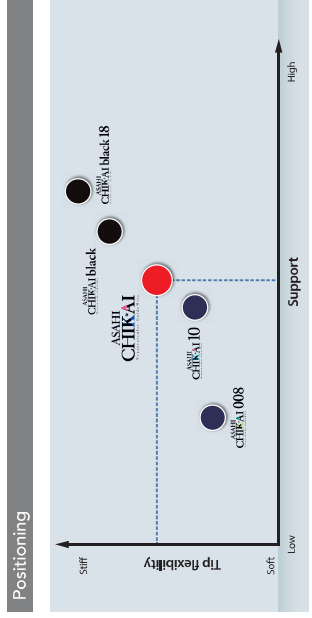
Neurovascular Guide Wire

Your dreams. Woven together. **ASAHI INTECC**

Specification & ordering information						
Product	Crabclay No.	O.D.	Coating	Usable length	Coil length	Tip shape
ASAHI CHIKAI 008	WAN-CH008-200	0.20 / 0.26mm (0.008 / 0.010in)	Hydrophilic coating (SIP+COAT™) 190mm	200mm	9cm	Straight
	WAN-CH016-200	0.26mm (0.010in)	Hydrophilic coating (SIP+COAT™) 170mm	200mm	9.5cm	Straight
	WAN-CH016-300	0.26mm (0.010in)	Hydrophilic coating (SIP+COAT™) 170mm	300mm	9.5cm	Straight
ASAHI CHIKAI	WAN-CH0300	0.28mm (0.011in)	Hydrophilic coating (SIP+COAT™) 170mm	200mm	30cm	Straight
	WAN-CH0300-4C	0.28mm (0.011in)	Hydrophilic coating (SIP+COAT™) 170mm	200mm	30cm	Round curve
	WAN-CH0300	0.28mm (0.011in)	Hydrophilic coating (SIP+COAT™) 170mm	300mm	30cm	Straight
	WAN-CH0300-4C	0.28mm (0.011in)	Hydrophilic coating (SIP+COAT™) 170mm	300mm	30cm	Round curve
ASAHI CHIKAI black	WAN-CH0500-BS	0.32mm (0.013in)	Polymer jacket / Hydrophilic coating (SIP+COAT™) 170mm	200mm	30cm	Round curve
	WAN-CH0500-BSA	0.28mm (0.011in)	Polymer jacket / Hydrophilic coating (SIP+COAT™) 170mm	200mm	30cm	Angled 90°
ASAHI CHIKAI black 18	WAN-CH0600-BS	0.45 / 0.41mm (0.018 / 0.016in)	Polymer jacket / Hydrophilic coating (SIP+COAT™) 170mm	200mm	34cm	Round curve



ASAHI CHIKAI Family / WAN-CH1912



**normal vessels / standard cases**

**tiny vessels / precision cases**

**tortuous vessels / complex cases**

**large vessels / high support cases**

Manufactured by: **ASAHI INTECC**

ASAHI INTECC CO.,LTD.

9-100 Awaibaicho, Saito, Aichi 486-0271 Japan  
 Contact phone number: +81-53-486-1011  
<http://www.asahi-intecc.com>

Distributed by:

ASAHI INTECC

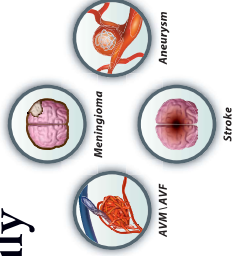
9-100 Awaibaicho, Saito, Aichi 486-0271 Japan  
 Contact phone number: +81-53-486-1011  
<http://www.asahi-intecc.com>

# ASAHI CHIKAI Family

Neurovascular GuideWire

**Providing good torque response, support and durability for neuro interventional procedures**

ASAHI CHIKAI family of guide wires has been originally developed based on Asahi Intecc's unique set of technologies which accomplished great success in the field of cardiovascular interventions.



## Technologies with Dual-coil design using ACT ONE

**Employs the ASHI brand rope coil which provides torqueability, flexibility and resiliency.**  
 ASHI INTECC CO., LTD.'s unique technologies in wire drawing, wire forming, torque transmission and coating are utilized to create highly responsive guide wires featuring ASAHI'S ACT ONE dual-coil design.

### Key features

- Precise torque response**
  - ACT ONE provides exceptional torque response in tortuous anatomy.
- Durable tip-shape retention**
  - Incorporating with ACT ONE, re-shapable pre-shaped round curve and 90 degree angle enhance tip shape memory and durability.
- Round curve**
  - Available for CHIKAI black and CHIKAI blue
- Angled 90°**
  - Available for CHIKAI black

## ASAHI CHIKAI

Neurovascular GuideWire

ASAHI CHIKAI ASAHI CHIKAI 10 and ASAHI CHIKAI 008 are designed for an optimal balance between tip flexibility and microcatheter support

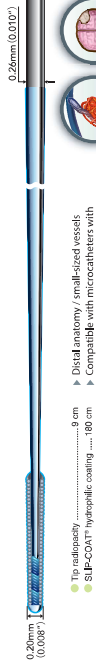
0.008" (0.020")

0.010" (0.025")

0.014" (0.035")

### ASAHI CHIKAI 008 (200cm)

— Soft flexible tip & distal body



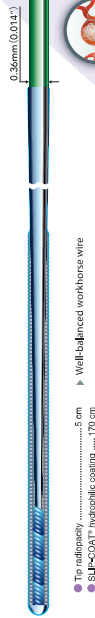
### ASAHI CHIKAI 10 (200cm, 300cm)

— Balanced tip and higher body support



### ASAHI CHIKAI (200cm, 300cm)

— 0.36mm (0.014") workhorse guide wire



## ASAHI CHIKAI black

Neurovascular GuideWire

Providing excellent support and less friction due to polymer jacket and hydrophilic coating for smooth delivery of microcatheter

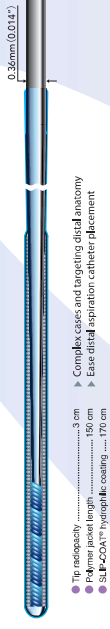


0.014" (0.035")

0.018" (0.045")

### ASAHI CHIKAI black (200cm)

— 0.36mm (0.014") guide wire with enhanced lubricity



### ASAHI CHIKAI black 18 (200cm)

— Speciality guide wire

