



## POTATO PEELING MACHINE

# OPERATION AND MAINTENANCE MANUAL



### MODELS









PAT 600T	PAT 600M	PAT 800T	PAT 800M
PAT 750KT	PAT 750KM	PAT 880KT	PAT 880KM
PAT 1030KT	PAT 1030KM	PAT 1050KT	PAT 1050KM



### TOPALOĞULLARI MAKİNA SAN. VE TİC. A.Ş.

Bahriye Cad. No:105 Kasımpaşa Beyoğlu 34440 İstanbul Türkiye  
+90 212 297 99 13 | [www.mateka.com](http://www.mateka.com) | [info@mateka.com](mailto:info@mateka.com)

## 1. Safety Instructions

-  Please read these instructions carefully and use the appliance only for kneading dough. Failure to follow these instructions will result in damage to the equipment and will void all warranty claims.
-  Before starting to use, the direction of rotation of the machine with three-phase motor should be checked. Run for a short time and test it. If the machine does not turn in the direction of the arrow, ask your Electrician to adjust the installation accordingly.
-  **Never fully open the top or front drain cover and do not touch the sanding of the machine before your machine stops completely.**
-  Do not use water under your machine. Otherwise, you may cause an engine burn or electric shock.
-  If you forget to turn off the machine before unplugging the plug, wait at least 10 seconds before operating the machine again.
-  People with physical, sensory, and mental illness cannot use the device unless it is controlled and directed by someone responsible for your safety.
-  Place the machine out of the reach of children.
-  Do not use solvents, benzene, or alcohol to clean the machine.


## 2. Capacity

Product	Capacity	Product	Capacity
PAT 650	5 - 10 Kg	PAT 880	25 – 30 Kg
PAT 750	15 - 20 Kg	PAT 1030	35 – 40 Kg
PAT 800	10 - 20 Kg	PAT 1050	45 – 50 Kg

TABLE 1


## 3. Operation and Usage Instruction

- Connect a 1/2" water hose to the water inlet connection of your machine.
- Connect the 3 "(Ø76mm) throat hose to the drain connection of your machine.
- Wash the potatoes you want to peel before pouring them into the machine and make sure that there is no mud.
- Place the potatoes in the machine in an amount not exceeding the capacity and close the lid and lock it. Check Table 1 for capacity information.
- Insert the plug into the socket.
- Set the time you want to operate your machine using the time clock on the control panel. Then make sure that the top and outlet opening are closed.
- Open the ball valve and provide water flow.
- Start the machine by pressing the on button. The machine will stop automatically after the set time. After the machine stops, turn off the water and take the potatoes from the outlet opening (FIG. 1 / FIG. 2).


 Operating your machine in a hygienic environment is very important for human and environmental health. Therefore, do not operate your machine in humid, dirty, oily, dusty etc.. environment.

#### 4. Cleaning and Maintenance Instructions

- The process of pouring the potatoes into the cauldron with sack is one of the most common usage errors. This problem draws attention in terms of the number of statistics in our technical services. This process causes malfunctions due to entanglement of sack threads to the lower disk pin, and also soil and mud deposits in unwashed potatoes damage both the machine and the engine. **Considering these, never pour the potatoes into your machine from the sack. Instead, wash the potatoes and remove them from dust and debris, then fill them into the machine.**
- Keep the water open until the material inside the boiler is completely cleaned.
- Start cleaning your machine after you are done with the machine and clean it when your machine is not working.
- Always disconnect the machine from the source before carrying out cleaning.
- Do not try to clean the sanders of your machine manually.
- Start operating your machine again after your machine is completely dry.

 Turn off your machine and unplug your machine before starting cleaning.

 Never wash the machine with pressurized water.

 After your potatoes are completely cleaned, continue the water flow into the stem for a few seconds. In this way, you can ensure that both your potatoes and the sander inside the body are cleaner.

Wipe the body of your machine with a damp cloth after each use or daily. At least once a week, remove the bottom disc of your machine (Figure 1 / Figure 2) and remove dust, mud and debris that may be underneath. Make sure that it fits completely into its slot while replacing the lower disk. If necessary, turn the device left and right to ensure that the disc is in place.

## 5. Parts List

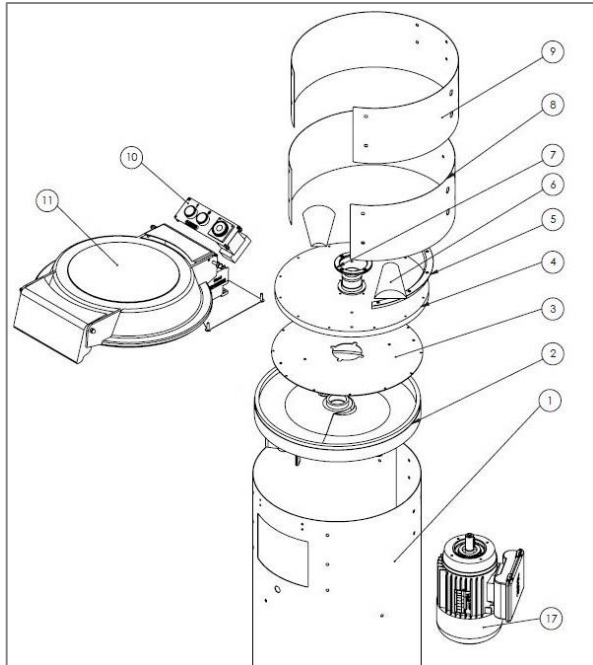


Figure – 1 (PAT 650 ve PAT 800 Series)

No	Parts	No	Parts
2	Plastic motor housing	8	Side sand paper
3	Bottom sand paper	9	Side abrasive sand paper
4	Abrasive Disc	10	Start / Stop button and timer
5	Disc side circle	11	Transparent top lid
6	Disc handle	17	Motor
7	Disc middle circle		

TABLE 2

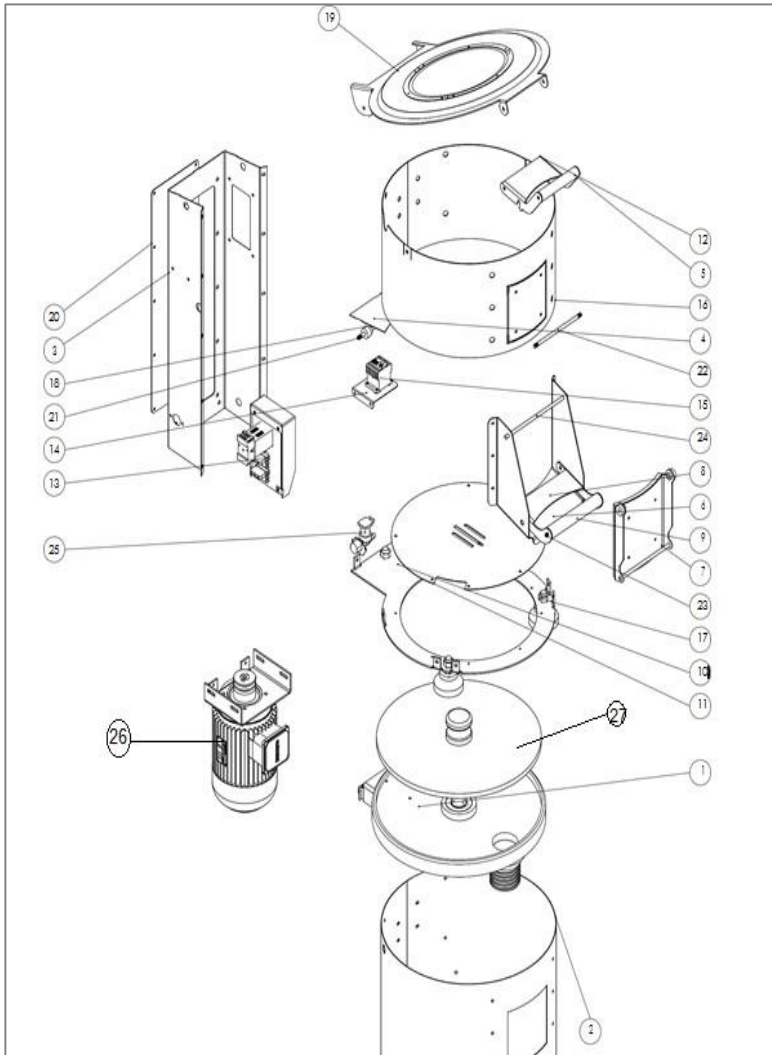


Fig – 2 (PAT 750, PAT 880, PAT 1030 ve PAT 1050 Series)

No	Parts	No	Parts
1	Motor housing	19	Lid
7	Discharge opening	25	Water connection set
13	Control panel	26	Motor
15	Contactor	27	Aliminium bottom disk
16	Side sanding sheet metal		

TABLE 3

## 6. Troubleshooting

<b>Breakdown</b>	<b>Probable Cause</b>	<b>Action to be Taken</b>
Machine does not work	Plug may not be inserted	Insert the plug
	Time clock's time may have expired.	Set the time clock to the time you want to operate the machine.
	"Start" button may not have been pressed even though the time clock is set	Start your machine by pressing the Start button
Metallic sounds coming from the machine	Your machine may not be on a flat surface	Place your machine on a flat surface.
	You may be pushing the engine because you filled the machine with potatoes over its capacity.	Remove the excess amount if necessary by comparing the machine capacity with the amount of potatoes in the machine.
Power may be insufficient	The plug may not be inserted correctly	Check that the plugs are inserted correctly and correct with a qualified technician if necessary.
	The cables inside the plug may be broken and / or the phase is missing.	Confirm with your skilled technician that there are no problems with your machine's connecting cables.

TABLE 4

## 7. Company Information

<b>City</b>	<b>Sale Point</b>	<b>Address</b>	<b>Contact</b>
<b>İSTANBUL</b>	MERKEZ	Bahriye Cad. No:105 Kasımpaşa Beyoğlu 34440 İstanbul	Tel: +90 212 2979913 Fax: +90 212 2979915 info@mateka.com
<b>TEKİRDAĞ</b>	FABRİKA	Çerkezköy Organize Sanayi Bölgesi Karaağaç Mah.10.Sokak No:9 Kapaklı Tekirdağ	Tel: +90 282 758 37 32 Fax: +90 282 758 38 01 servis@mateka.com

TABLE 5