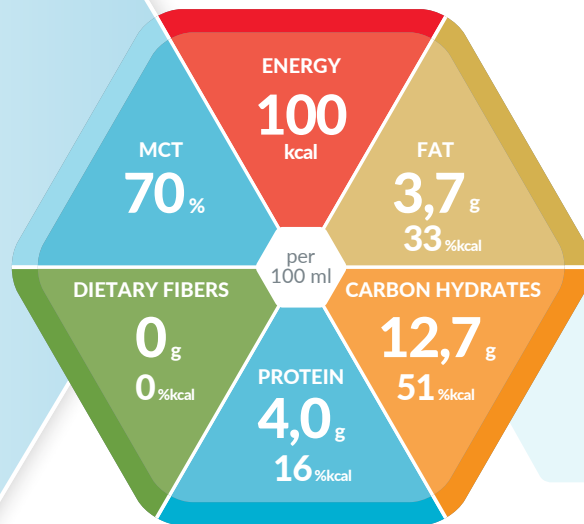




SmartFlex®



NORMOCALORIC, LOW-MOLECULAR-WEIGHT TUBE FEEDS

Product Properties

- Normocaloric (1 kcal / ml)
- 100% hydrolyzed whey protein
- 70% MCT in fat
- Without dietary fiber
- Low lactose (< 0.2 g / 100 ml)
- Gluten Free

Indications

- To meet normal protein and energy requirements in the absence or impaired ability to provide adequate nutrition, especially in malassimilation and short bowel syndrome or fat utilization disorders (e.g. pancreatic insufficiency)
- Cystic fibrosis
- In chronic inflammatory bowel diseases
- In case of gastric emptying disorders and / or other intolerances of conventional tube feeds

Dosage

- **For exclusive nutrition:**
1,500 to 2,000 ml per day (3–4 SmartFlex®)
- **For supplemental nutrition:**
≥ 500 ml per day or as directed by a physician

Storage

Store unopened in a cool, dry place. If using the spike or universal adapter, apply within 24 hours. Re-seal opened SmartFlex®, store in refrigerator and use within 24 hours.

Special Instructions

Use under medical supervision

- Not suitable for children under 3 years of age
- Do not mix with other food or add to medications
- Not for parenteral use
- Packed under protective atmosphere
- Food for special medical purposes (balanced diet)

List of Ingredients

Water, maltodextrin, hydrolyzed whey protein (milk), medium chain triglycerides, soybean oil, minerals (sodium phosphate, calcium citrate, magnesium chloride, potassium chloride, sodium citrate, potassium citrate, sodium chloride, magnesium oxide, calcium phosphate, ferrous sulfate, zinc sulfate, manganese sulfate, copper sulfate, sodium fluoride, potassium iodide, chromium chloride, sodium molybdate, sodium selenate), emulsifier (soy lecithin, E471), thickeners (E412, E407), vitamins (C, E, niacin, pantothenic acid, B6, A, thiamin, riboflavin, folic acid, K, D, biotin), choline chloride, taurine, L-carnitine.

Allergens: Soy, milk.

Nutritional Information

Peptamen®		100 ml
ENERGY:	kcal	100
	kJ	421
Fat , of which	g	3.7
	% kcal	33%
– Saturated fatty acids	g	2.6
– MCTs	g	2.6
– Monounsaturated fatty acids	g	0.22
– Polyunsaturated fatty acids	g	0.50
– Omega-3	g	0.06
– Omega-6	g	0.45
Carbohydrates , of which	g	12.7
	% kcal	51%
– Sugars	g	0.48
– Of which lactose	g	< 0.20
Dietary fiber	g	0
	% kcal	–
– Dietary fiber source		–
Protein	g	4.0
	% kcal	16%
Protein source		100% hydrolyzed whey protein
MINERALS:		
Sodium	mg	74
	mmol	3
Potassium	mg	115
	mmol	3
Chloride	mg	67
	mmol	2.2
Calcium	mg	50
	mmol	1.26
Phosphorus	mg	50
	mmol	1.62
Magnesium	mg	20
	mmol	0.84
Iron	mg	1.1
Zinc	mg	1.0
Copper	mg	0.11
Manganese	mg	0.23
Fluoride	mg	0.09
Selenium	µg	6.3
Chromium	µg	6.5
Molybdenum	µg	11
Iodine	µg	14
VITAMINS:		
Vitamin A	µg RE	119
Vitamin D	µg	1.1
Vitamin E	mg	1.5
Vitamin K	µg	6.6
Vitamin C	mg	14
Thiamine	mg	0.15
Riboflavin	mg	0.15
Niacin	mg NE	2.2
B ₆	mg	0.21
Folic acid	µg	28
B ₁₂	µg	0.25
Biotin	µg	3.6
Pantothenic acid	mg	0.65
Choline	mg	21
Osmolarity	mOsm/l	220
Water content	g	85

RE = retinol equivalent; NE = niacin equivalent

Nutrients

FAT:

The fat content consists of nutritionally superior soybean oil and medium chain triglycerides (MCT).

	in % of total fat	g / 100 ml
Saturated fatty acids, of which	70	2.6
– MCT	70	2.6
Monounsaturated fatty acids	6	0.22
Polyunsaturated fatty acids, of which	14	0.50
– Omega-3 fatty acids	2	0.06
Ratio omega-6 : omega-3		7.5 : 1

CARBON HYDRATES:

The main ingredient is **maltodextrin**.

	in % of total carbohydrates	g / 100 ml
Oligo- and polysaccharides	96	12.2
Sugars (mono- and disaccharides)	4	0.48
Lactose	–	< 0.2

DIETARY FIBERS:

Peptamen® is free of dietary fiber.

PROTEIN:

Peptamen® contains 100% high quality and easily digestible hydrolyzed whey protein. 1 liter contains 40 g of protein.

MINERALS AND VITAMINS:

The daily requirement of micronutrients (vitamins and minerals) is covered from 1,500 kcal.