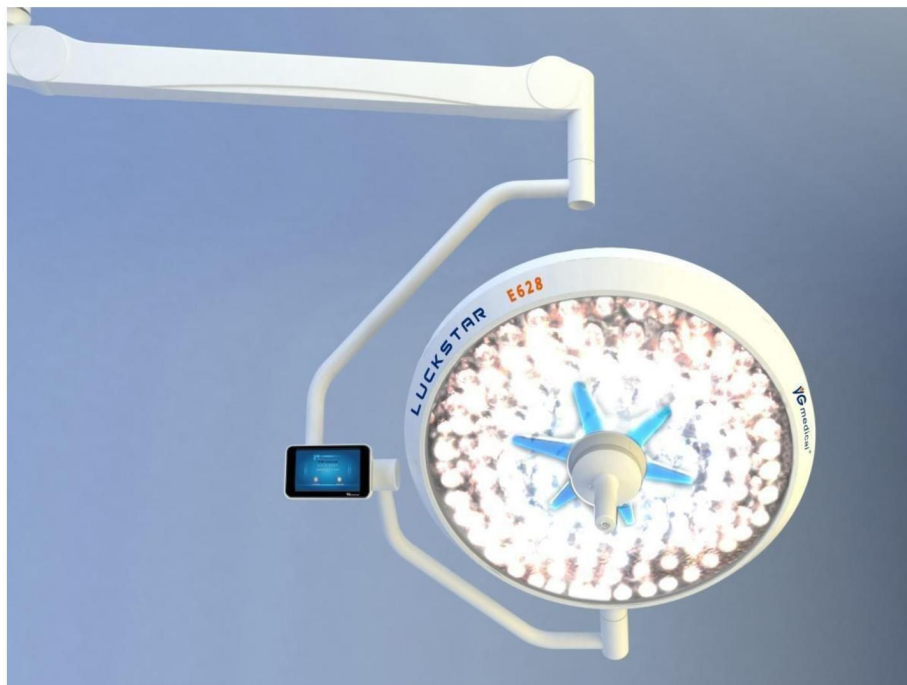


Surgical Light

User Manual



LUCKYSTAR E528	LUCKYSTAR E628	LUCKYSTAR S628
LUCKYSTAR S628 C	LUCKYSTAR S628 D	LUCKYSTAR S628 CD
LUCKYSTAR E528/E528	LUCKYSTAR E628/E528	LUCKYSTAR E628/E628
LUCKYSTAR S628/E528	LUCKYSTAR S628/E528 C	LUCKYSTAR S628/E528 D
LUCKYSTAR S628/E528 CD	LUCKYSTAR S628/E628	LUCKYSTAR S628/E628 C
LUCKYSTAR S628/E628 D	LUCKYSTAR S628/E628 CD	LUCKYSTAR S628/S628
LUCKYSTAR S628/S628 C	LUCKYSTAR S628/S628 D	
LUCKYSTAR S628/S628 CD		

E528/E528 means no electric focusing function, double lamp head, the outer diameter of the lamp head are Ø528mm and Ø528mm

E628/E528 means no electric focusing function, double lamp head, the outer diameter of the lamp head are Ø628mm and Ø528mm

E628/E628 means no electric focusing function, double lamp head, the outer diameter of the lamp head are Ø628mm and Ø628mm

S628/E528 S628 means electric focusing function, E528 means no electric focusing function, ceiling type with double lamp head, the outer diameter of the lamp head are Ø628mm and Ø528mm

S628/E628 S628 means electric focusing function, E628 means no electric focusing function, ceiling type with double lamp head, the outer diameter of the lamp head are Ø628mm and Ø628mm

S628/S628 means electric focusing function, ceiling type with double lamp head, the outer diameter of the lamp head are Ø628mm and Ø628mm

※ Camera system: it means equipped with the camera system. C is the first letter of camera.

※ Display: it means equipped with display, D is the first letter of display.

Type listing:

LUCKYSTAR E528	LUCKYSTAR E628	LUCKYSTAR S628
LUCKYSTAR S628 C	LUCKYSTAR S628 D	LUCKYSTAR S628 CD
LUCKYSTAR E528/E528	LUCKYSTAR E628/E528	LUCKYSTAR E628/E628
LUCKYSTAR S628/E528	LUCKYSTAR S628/E528 C	LUCKYSTAR S628/E528 D
LUCKYSTAR S628/E528 CD	LUCKYSTAR S628/E628	LUCKYSTAR S628/E628 C
LUCKYSTAR S628/E628 D	LUCKYSTAR S628/E628 CD	LUCKYSTAR S628/S628
LUCKYSTAR S628/S628 C	LUCKYSTAR S628/S628 D	LUCKYSTAR S628/S628 CD

2.6 Technical parameters

Parameters specification		Ø528mmlamp cap	Ø628mmlamp cap
Center luminance (E _c)	Step I	40klx≤E _c ≤140klx	40klx≤E _c ≤160klx
	Step II		
	Step III		
	Step IV		
	Step V		
Light spot	Diameter (d ₁₀)	170 mm±15% ≤ d ₁₀ ≤ 340 mm±15%	
	d ₅₀ / d ₁₀	≥60%	≥60%
	focusing	no	yes
Note: Ø628mm light spot focusing is optical			
Sha do wle ss	Remaining illumination with one baffle	40%	50%
	Remaining illumination with two baffle	45%	45%
	Remaining illumination with tube	≥90%	≥88%
	Remaining illumination with one tube and baffle	≥28%	≥40%

	Remaining illumination with one tube and two baffles	$\geq 40\%$	$\geq 40\%$
Depth of illumination		$\geq 1000\text{mm}$	$\geq 1000\text{mm}$
Color rendering index (R_a)	3500K \pm 250K	96 \pm 3	96 \pm 3
	4000K \pm 250K	96 \pm 3	96 \pm 3
	4500K \pm 250K	≥ 92	≥ 92
	5000K \pm 250K	≥ 86	≥ 86
Color temperature (T_K)	I ($x \approx 0.41 \pm 0.1$; $y \approx 0.39 \pm 0.1$)	3500K \pm 250K	3500K \pm 250K
	II ($x \approx 0.38 \pm 0.1$; $y \approx 0.38 \pm 0.1$)	4000K \pm 250K	4000K \pm 250K
	III ($x \approx 0.36 \pm 0.1$; $y \approx 0.37 \pm 0.1$)	4500K \pm 250K	4500K \pm 250K
	IV ($x \approx 0.35 \pm 0.1$; $y \approx 0.35 \pm 0.1$)	5000K \pm 250K	5000K \pm 250K
Note: color temper is adjustable with four steps, the standard color temp is 4000K.			
The total irradiance (E_e)		$\leq 500\text{W/m}^2$	$\leq 600\text{W/m}^2$
The ratio of irradiance vs illumination		$\leq 3.8\text{mW}/(\text{m}^2.\text{lx})$	$\leq 3.8\text{mW}/(\text{m}^2.\text{lx})$
Head light power consumption		75W	100W
Input power consumption		200VA	200VA
Fuse wire		T1AL250V	T2AL250V

2.7 Electricity specification

Power supply voltage: AC220V \pm 22V

Frequency: 50Hz \pm 1Hz

Lamp head power consumption: 75W ($\varnothing 528\text{mm}$ lamp cap); 100W ($\varnothing 628\text{mm}$ lamp cap)

Input power consumption: 200VA

Fuse: T1AL 250V ($\varnothing 528\text{mm}$ lamp cap); T2AL 250V ($\varnothing 628\text{mm}$ lamp cap)

2.8 Package, Transportation and Storage conditions

a) Package

There should be a using manual, testing report and packing list in the packing case. The surgical light should be fixed firmly in the box. Using the soft upholstery of suitable thickness, avoid the movement or any friction during the transportation.

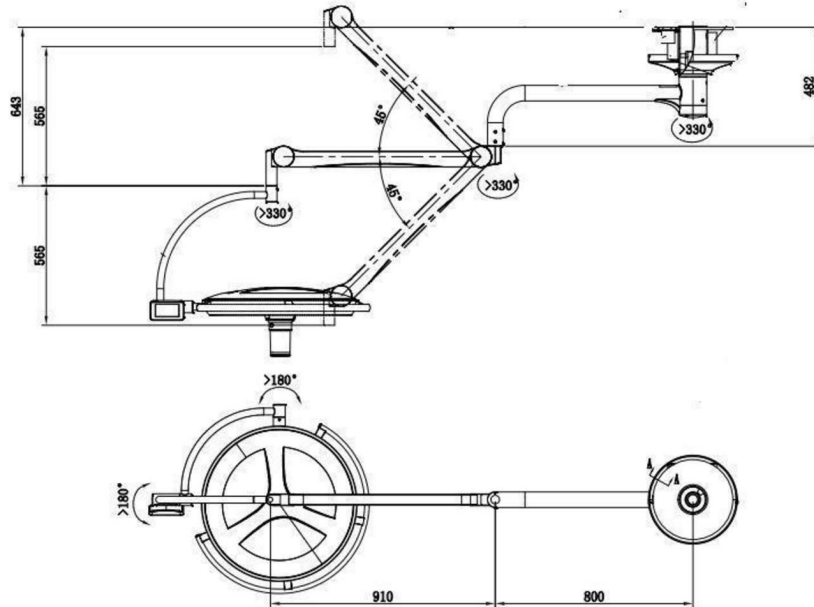
b) Transportation

Use normal transportation methods. Prevent the goods from violently hitting, shock, crashing. Keep away from rain/ snow.

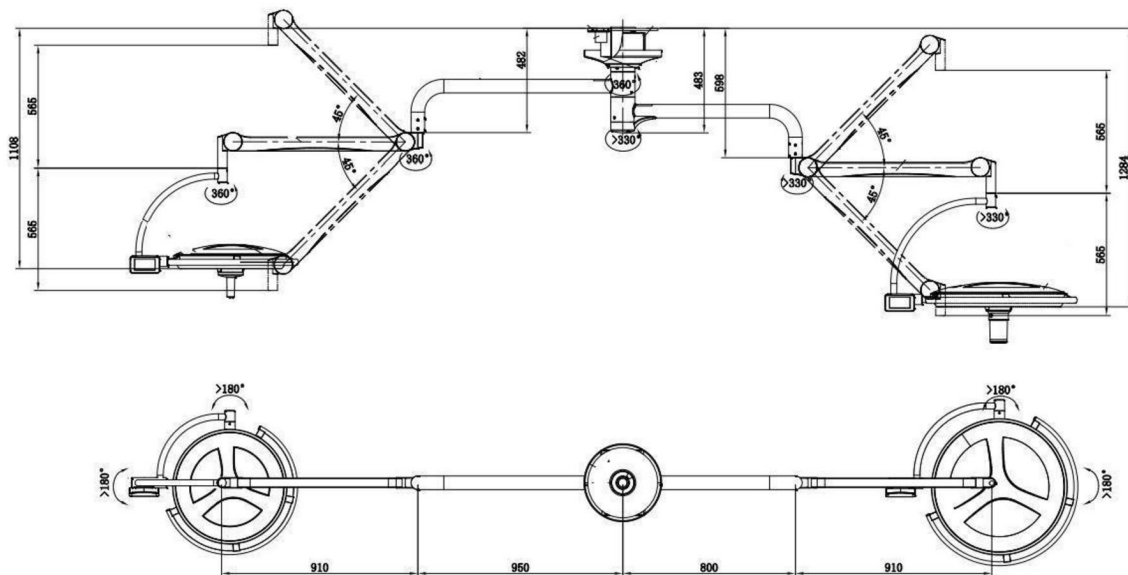
8. Technical instruction

8.1 Product standard – Examples of available configurations

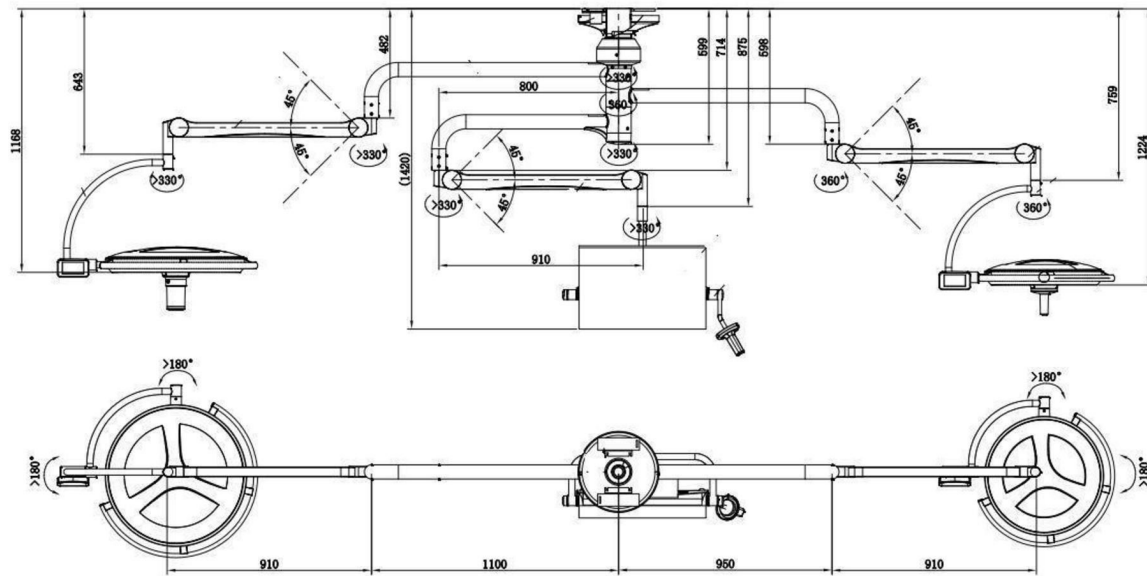
Configuration I



Configuration II



Configuration III



You can ask the distributor or our company if you need other dimensions, we will endeavor to provide you with quality service and help.