



BRIEFCAM PLATFORM DATASHEET

BriefCam

The BriefCam® comprehensive Video Content Analytics platform empowers people, companies, and communities to realize the value of their video surveillance content by making video searchable, actionable, and quantifiable. Review hours of video in minutes; respond immediately to critical situational changes in the environment; and quantitatively analyze video to derive actionable insights for data-driven safety, security and operational decision making, all while effectively balancing sensitivity, accuracy, and efficiency:

INNOVATIVE & EXTENSIBLE PLATFORM: A robust portfolio of critical video analytics capabilities fully integrated across the platform for video metadata search, alerting, and visualization, powerfully extending the value of video surveillance investments. BriefCam supports integrations with an ever-expanding set of leading Video Management Systems (VMS) driving best-of-breed video solutions for heightened user experiences.

UNMATCHED ACCURACY: Leverage market leading accuracy for detection and classification across object classes, attributes, behaviors, as well as appearance similarity and face and license plate recognition.

SUPERIOR PERFORMANCE: Effectively supports the requirement for both on-demand and real-time analytics for full camera coverage and introduces AI-industry standard Linux-based processing for increased real-time performance, precision, and speed.

FLEXIBLE ARCHITECTURE: Designed to meet the business needs of today and tomorrow for deployment architectures, including standalone or multi-site, all-in-one or distributed large-scale, as well as on-premises or cloud deployments.

CENTRALIZED ANALYTICS & ALERTS: With the BriefCam Hub, multi-site customers can centrally view and analyze alerts generated at remote sites as well as business intelligence dashboard visualizations from all sites.

ELEVATED CUSTOMER EXPERIENCE: Dedicated consultancy, implementation, and support to ensure customers enjoy the quickest time to value, lowest total cost of ownership, and impactful analytics applications to maximize the investment in video.

18:35
01:23
02:39 15:13
21:19
01:43
16:44 03:47

BRIEFCAM SOLUTIONS



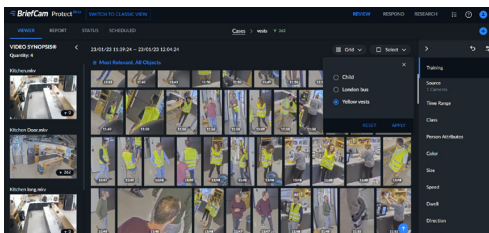
REVIEW

Accelerate Investigations

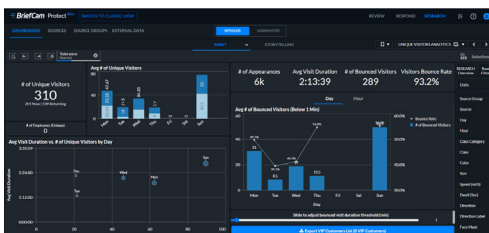
By leveraging the REVIEW capabilities, users can pinpoint objects and events of interest to advance investigations and powerfully accelerate time to target. This solution supports effective case management, so investigators can organize video assets, bookmark objects of interest, summarize case findings, and export reports, while dynamically collaborating on cases with other users.

With REVIEW, operators can review hours of video in minutes and refine search results through filter tolerance as well as density, speed, direction, and sort controls. REVIEW enables functions including:

- Cross-camera video search and filtering, based on an ever-expanding set of object classes and attributes.
- Visual layers, which presents activity, dwell time, common paths, and background changes as easily readable heatmaps for increased scene understanding.
- The patented BriefCam VIDEO SYNOPSIS® solution, which simultaneously presents objects that have appeared at different times within the video, resulting in a dramatically shorter video segment that fully preserves the viewer's ability to analyze the scene.



Train custom classes for video search, alerting & data visualization



Tracking unique and total traffic in RESEARCH



RESPOND

Attain Situational Awareness

With BriefCam RESPOND you can trigger real-time alerts based on complex object classification and recognition filter combinations to increase situational awareness and deliver critical, time-sensitive intelligence. RESPOND empowers you to react to events as they unfold, from proactively protecting people and property to driving better visitor or customer engagement as opportunities arise.

BriefCam allows for improved responsiveness, real-time decision-making, and effective balancing of sensitivity, accuracy, and efficiency with alerting rule configuration, face and license plate watchlist management, and alert notifications for messaging services and VMS alarm areas, including integration with Genetec Security Center, Milestone XProtect, Axis ACS, Digifort Enterprise, IndigoVision Control Center, Qognify Ocularis, and Verint EVMS.



RESEARCH

Derive Operational & Business Intelligence

Uncover patterns, drive strategic decision-making, and optimize operational and business practices by aggregating video data in a fully-integrated, highly customizable business intelligence platform. BriefCam RESEARCH visualizes object movement, demographic segmentations, behavior trending, hotspots, and object interactions. It offers interactive, intuitive, and easy to use dashboards for data analysis, as well as tools for auto-generating and prioritizing relevant data points and charts.

With business intelligence, you can seamlessly correlate video analytics with third party data sources, such as Point of Sale, Time Management, and Access Control, for a uniquely informative view of your environment and export data to external business intelligence databases for further analysis and correlation.



DEVELOPER TOOLS

Better Together

UNIFIED OPEN API: Enables developers to deepen the integration between third-party applications and BriefCam.

RESPOND OUTBOUND API: Enables integration of BriefCam alerts into third-party alerting infrastructures.

SYSTEMS EVENT API: Enables a system event to be sent to any third-party system.



ADMINISTRATION

Ease of Use

CENTRALIZED ADMINISTRATION: View and activate cameras, configure hosts, GPUs, and services from a single web interface.

FLEXIBLE SCHEDULING: Schedule continuous, one-time, daily or weekly automatic video processing for each VMS video source, across all three platform modules.

SSO COMPATIBILITY: Support for secure third-party single sign-on authentication.

GDPR COMPLIANCE: Easily delete or export personally identifiable data, enabling GDPR compliance.

CROSS-PLATFORM VIDEO ANALYTIC CAPABILITIES

FEATURE	REVIEW Search	RESPOND Alert	RESEARCH Quantify
SOURCE Based on specific cameras or files	✓	✓	✓
TIME RANGE Based on specific time ranges	✓	✓	✓
CLASS Based on People (Man, Woman, Child), Two-Wheeled Vehicles (Bicycles, Motorcycles), Other Vehicles (Car, Pickup, Van, Truck, Bus, Train, Airplane, Boat), Illumination Changes, and Animals.	✓	✓	✓
CUSTOM CLASSIFIED Define, train on-site, and leverage custom classes for uniformed workers and 4-wheel vehicles. Available only with Linux-based engine.	✓	✓	✓
PERSON ATTRIBUTES Based on person characteristics, including Lower and Upper Wear (by color), Hats, Face Masks, and Bags.	✓	✓	✓
COLOR Based on any combination of object color, including Brown, Red, Orange, Yellow, Green, Lime, Cyan, Blue, Purple, Pink, White, Grey, and Black	✓	✓	✓
VIDEO SYNOPSIS Simultaneously view objects that have appeared at different times in a video, or from smart-alerts for accelerated video review	✓	✓	
FAST TRACK Quickly find objects across surrounding cameras based on geolocations defined in the integrated VMS. Available for Genetec and Milestone.	✓		
CASE MANAGEMENT Organize all video assets of an investigation in a single container, bookmark objects of interest, and export case findings reports to support collaboration	✓		
APPEARANCE SIMILARITY Identify people and vehicles with similar attributes	✓		

FEATURE	REVIEW Search	RESPOND Alert	RESEARCH Quantify
FACE RECOGNITION Based on images extracted from existing video or photo uploads, conduct “in the wild” face matching for persons included or excluded on watchlists	✓	✓	✓
LICENSE PLATE RECOGNITION For in “in the wild” surveillance scenarios, recognize license plates based on watchlists for vehicle behavior analysis and traffic optimization	✓	✓	✓
LINE CROSSING Detect demarcation crossings in a predefined direction	✓	✓	✓
PROXIMITY IDENTIFICATION Detect the distance between individuals over time and location for measuring compliance with physical distancing mandates, enabling contact tracing, and advancing investigations	✓	✓	✓
FACE MASK DETECTION Detect and identify face mask wearing and lack thereof for measuring compliance with public health mandates and safety codes	✓	✓	✓
PEOPLE COUNTING Count the number of people in a pre-defined area or who travelled in a certain direction, track queues and crowd formations, and measure occupancy to optimize space utilization and pedestrian traffic flows	✓	✓	✓
AIRPLANE COUNTING Monitor the increase or decrease of airplanes in a pre-defined range of view or area. Available only with Linux-based engine		✓	✓
GROUP DETECTION Receive alerts when a group of a pre-defined number forms in a certain area for a certain amount of time. Available only with Linux-based engine		✓	
VISUAL LAYERS Create visual analytics and derive insights about activity, dwell time, common paths, and background changes	✓		✓
DIRECTION Based on the direction detected in the video	✓	✓	✓
SIZE Based on object’s actual calculated size	✓	✓	✓
PATH Identify objects traveling along one or more user-defined paths	✓	✓	✓
AREA Identify objects included or excluded within one or more user-defined 3- or 4-sided polygon areas	✓	✓	✓
SPEED Based on object’s actual calculated speed	✓	✓	✓
DWELL Based on object dwelling for pre-set time periods within a scene	✓	✓	✓

TECHNICAL SPECIFICATIONS

RECOMMENDED VIDEO STREAM RESOLUTION	Minimum CIF (352 x 240), Maximum 4K (3840 X 2160)
RECOMMENDED FRAME RATE (FPS)	8-30 frames per second
SUPPORTED VIDEO FILE FORMATS	.264, .3GP, .ASF, .AVI, .DAV, .DIVX, .DVR*, .FLV, .G64, .G64X, .GE5, .MKV, .MOV, .MP3, .MP4, .RAW, .RT4, .TS, .WMV, .XBA (single & multi-stream)
SUPPORTED CODECS	H.264, H.265/HEVC, MPEG-4, H.263 (H.265 is supported for selected VMSs and cameras)
FILE-BASED INGESTION	Multi-file videos or single file videos
SUPPORTED VMS PLATFORMS	American Dynamics, Arcanes Technology, Avigilon, Axis, Bosch, CASD, Dallmeier, Digifort, Digital Watchdog, Exacq, FLIR (formerly DVTel), Genetec, Geutebruck, IndigoVision, IPConfigure, ISS, LenelS2*, March Networks*, Milestone, NX (Network Optix), Panasonic i-PRO Sensing Solutions Corporation of America*, Pelco*, Qognify (formerly Nice and OnSSI/ SeeTec), Salient, Surveillus*, Synectics*, Teleste, Verint * Plugins created by the VMS partner
SUPPORTED CAMERA TYPES	Fixed Cameras
SINGLE SIGN-ON (SSO)	Microsoft Active Directory, both LDAP and LDAPS, including user groups (OU support), and the SAML protocol
FACE RECOGNITION	Minimum Face Size: 24x24 pixels across the person's face, 12 pixels between the eyes, or 200 pixels per meter
SUPPORTED LANGUAGES	Arabic, Brazilian Portuguese, Bulgarian (not including RESEARCH), Chinese Simplified, Chinese Traditional, Danish, Dutch, English, Finnish, French, German, Hebrew, Italian, Japanese, Korean, Latin Spanish, Russian, Thai, Turkish, Ukrainian, Vietnamese
SUPPORTED BROWSERS	Google Chrome Desktop, Mozilla Firefox, and Microsoft Edge (not supported in the Hub)

ABOUT BRIEFCAM

BriefCam® is the leading provider of video analytics software that enables people, companies, and communities to unlock the value of video surveillance content. Delivering accurate, flexible, and comprehensive solutions, BriefCam's video analytics platform provides valuable insights for accelerating investigations, increasing situational awareness, and enhancing operational intelligence. VIDEO SYNOPSIS® technology is a registered trademark of BriefCam, Ltd. For more information about BriefCam's video content analytics solutions, visit www.briefcam.com.