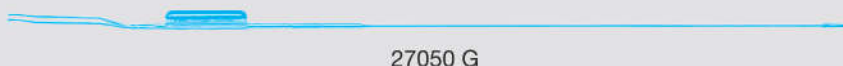


Electrodes

One-Stem Electrodes with Stabilizers, for Working Elements 27050 C/D/E

For use with 24 – 28 Fr. resectoscope sheaths



The cutting loops are delivered with a wire diameter of 0.35 mm.

Distal Tip	24/26 Fr. color code: yellow	27/28 Fr. color code: brown	Instrument Description
	27050 G	27050 F	Cutting Loop , angled 24 Fr., diameter: 0.40 mm, color code: yellow 27050G40 LOT 13
	27050 GS	–	THOMAS Cutting Loop , angled, small
	27050 J	–	Cutting Loop , longitudinal
	27050 L	27050 K	Coagulation Electrode , pointed
	27050 S	–	Coagulation Electrode , conical
	27050 N	27050 M	Coagulation Electrode , ball-shaped, diameter 3 mm
	27050 NK	27050 MK	Coagulation Electrode , ball-shaped, diameter 5 mm
	27050 NX	–	Coagulation Electrode , barrel-shaped, diameter 3 mm
	27050 NW	27050 MW	Coagulation Electrode , barrel-shaped, diameter 5 mm
	27050 GR	–	LOZZI Needle Electrode

Note: Electrodes, in sterile packaging, are also available for single use. Please contact:



High Frequency Cords see page 73

High Frequency Surgical Units see chapter 15, UNITS