

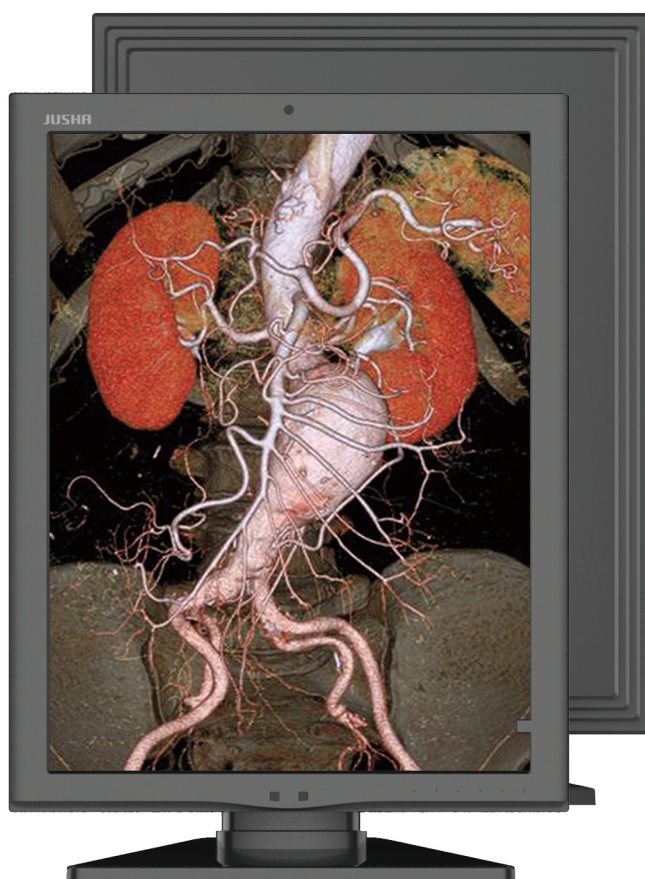
# C270

## Jusha 2MP Color Medical Diagnostic Display

Jusha professional display adopts industry-leading LED technology with advantages of high brightness, high grayscale, uniform brightness, energy saving and environmental protection, and long service life.

In addition, it features high resolution, high brightness and 48-bit colors, built-in DICOM standard LUT.

It can be used in demanding clinical diagnostic applications, such as: PACS, CR, DR, MR, CT and other diagnostic equipment.



**MEDICAL DISPLAY EXPERT**

JUSHA DISPLAY TECHNOLOGY CO.,LTD  
HOTLINE:400-820-0556 800-820-0556

# Product Features

## 1. High chroma

The C270 features a 48-bit LUT that can display 281.47 trillion colors with smoother color transition. It ensures that 16-bit grayscale image from high-end imaging equipment can be presented completely in front of a doctor; In addition, it is also helpful for diagnosing early-stage lesions that have extremely small grayscale difference from normal tissue;

## 2. Ins-guard real-time DICOM automatic calibration system

Jusha Ins-guard system is a DICOM real-time automatic calibration system. It monitors the brightness of the center point of the screen in real time through a built-in brightness sensor, and feeds back to the calibration system to automatically calibrate the brightness of the LCD panel to ensure compliance with DICOM standards. The center point measures and controls the brightness, making it more in line with the screen brightness requirements in the actual viewing area.

## 3. Full-screen brightness equalization SLE

Jusha full-screen brightness equalization system SLE measures and calibrates the brightness of each pixel of the monitor to ensure that the brightness uniformity meets the medical display requirements.

## 4. Film viewer mode

A film viewer mode is built-in the display with film clips, which can be quickly turned on by shortcut key for doctors to read x-ray films.

## 5. Ambient light detection and calibration

Jusha ambient light detection system can detect the ambient light, further adjust the display effect to make it fitter for eye-viewing and display images under various lighting environments.

## 6.3D LUT

The C270 uses 3D LUT technology. Compared with conventional LUT, 3D LUT is well-suited for accurate color calibration because it can handle all display calibration issues from simple gamma values, color ranges, tracking errors to the advanced calibration of nonlinear properties, color interference, hue, saturation, brightness, etc., basically covering all possible problems with display calibration .

## 7. SmarTouch technology

Jusha developed SmarTouch technology. By clicking the SmarTouch button, the brightness of the display can be instantaneously changed. At the same time, the BIA technology quickly stabilizes the brightness based on quick brightness enhancement technology while protecting the doctor's eyesight during accurate diagnosis.

## 8. Correction by front sensor

The front sensor can detect the brightness of the light emitted by the display panel, work with the backlight sensor to detect the brightness and ensure that the brightness of the LCD panel meets the DICOM standard.

## 9. Calibration by front sensor

The front sensor can detect the brightness of the light emitted by the display panel, work with the backlight sensor to detect the brightness and ensure that the brightness of the LCD panel meets the DICOM standard.

## 10. Remote quality control system

Jusha professional remote quality control system can remotely monitor and control the status of all Jusha professional displays via a computer network. The field maintenance and calibration of professional medical displays in hospital sometimes affect the hospital's normal operation. Remote operation is more convenient. Jusha remote quality control system provides clients with remote maintenance and monitoring services.

# Specification

Model No.	C270
Backlight	LED
Size	21.3"
Type (Color/Monochrome)	Color
Active Display	432(H)×324(V)mm
Resolution	1600×1200/1200×1600
Pixel Pitch	0.270×0.270mm
Response Time	16ms(8ms+8ms)
Brightness	1000cd/m <sup>2</sup>
Contrast Ratio	1400:1
Color Tone	281.47Trillion Colors(16bit)
View angle	≥178° ( CR≥10 )
Sensor	Backlight Sensor / Front Sensor / Human Inductive Sensor / Ambient Light Sensor / Temperature Sensor
LUT	DICOM,GAMMA2.2,GAMMA2.4,DSA,DSI ,CT/MRI
Video Signals	DVI-D×1,DP×1
Power Requirements	12V DC-4A
Cabinet color	Cold Grey
Dimensions	382mm*635mm*238mm
Dimensions ( Without Stand )	382mm*490mm*77mm
Net Weight	11.1kg
Net Weight ( Without Stand )	6.5kg