

## G-COAT H110

### GENERAL

A high purity, water contamination resistant blend of Monobutyltin Trichloride and a stabilizer used in the hot end coating of container glass.

### TYPICAL APPLICATIONS

G-COAT H110 is used to produce a very thin surface coating of tin oxide on glass containers providing a sound base for cold end coating materials. When properly applied, G-COAT H110 forms the foundation for a scratch resistant, durable glass surface.

### CHEMICAL IDENTIFIERS

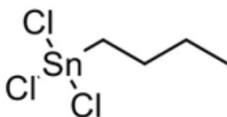
CAS Registry Number (as MBTC): 1118-46-3

EC Number (as MBTC): 214-263-6

### PHYSICAL PROPERTIES

|                              |                           |
|------------------------------|---------------------------|
| Appearance                   | Clear to pale straw color |
| Specific Gravity (water = 1) | 1.69                      |
| Decomposition Temperature    | 225°C                     |
| Freezing Point               | -63°C                     |

### CHEMICAL STRUCTURE



### IMPORTANT INFORMATION

Gulbrandsen maintains Safety Data Sheets (SDS) on all of its products. The SDS contains health and safety information for your development of appropriate product handling procedures to protect your employees and customers.

Our SDS should be read and understood by all of your supervisory personnel and employees before using Gulbrandsen products in your facilities.

### GENERAL SPECIFICATIONS\*

| Parameter                  | Specification |
|----------------------------|---------------|
| Monobutyltin Trichloride % | 99.9 min      |
| Dibutyltin Dichloride %    | 0.1 max       |
| Tributyltin Chloride %     | 0.02 max      |
| Tin %                      | 41 min        |
| Stabilizer %               | 2.0 max       |

\*Quality checked prior to the addition of the stabilizer.

\*Higher purities available to meet more restrictive requirements

### PACKAGING OPTIONS\*

|                                 |       |              |
|---------------------------------|-------|--------------|
| Non-returnable HDPE-Lined Drums | Steel | 50 kg net    |
| 680 Ltr Schütz IBC              |       | 1,080 kg net |
| 1,000 Ltr Schütz IBC            |       | 1,700 kg net |

\*Other packaging options available upon request.

### APPROVALS

Subject to correct application, stannic oxide (SnO<sub>2</sub>) coated glass containers are suitable for food use.

### GULBRANDSEN ADVANTAGES

- Market-leading quality produced via double-distillation to remove undesirable di- and tributyltin compounds and contaminants.
- Stabilized to protect against exposure to moist air and accidental water contamination, eliminating crystal formation.
- Manufacturers of the technically advanced GE-Series of Hot End Coating Hoods, combining the knowledge of coating chemicals and the application equipment under one team.
- Highly skilled and focused Customer Service and Technical groups that can provide an exceptional level of assistance with product selection, employee education, operational audits, health and safety consulting, as well as storage and handling consulting.
- Global warehousing sites ensure security of supply from one of the leading producers of organic and inorganic tin intermediates

#### AMERICAS

Orangeburg, South Carolina, USA  
 ☎ +1 (803) 531-2413  
 ✉ gul-cs-orders@gulbrandsen.com

#### EUROPE

Lincolnshire, United Kingdom  
 ☎ +44 (0) 2380 602 662  
 ✉ gpl-cs-orders@gulbrandsen.com

#### ASIA PACIFIC, MIDDLE EAST, AFRICA

Vadodra, Gujarat, India  
 ☎ +91 2652 229127  
 ✉ gpl-cs-orders@gulbrandsen.com

