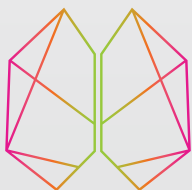




THE ENVOY™ FAMILY OF
GUIDING CATHETERS
A LEGACY OF TRUSTED PERFORMANCE



CERENOVUS

PART OF THE *Johnson & Johnson* FAMILY OF COMPANIES

ENVOY™
guiding catheter

ENVOY™ XB
guiding catheter

ENVOY™ DA
guiding catheter

ENVOY™ DA XB
guiding catheter

ENVOY™ FAMILY OF GUIDING CATHETERS

Guiding catheter technology built on the legacy you trust.



SOFT DISTAL TIP WITH EXCELLENT VISIBILITY¹

Proprietary BRITE TIP Technology offers excellent visibility while maintaining a soft distal tip¹

EXTRA BACK-UP SUPPORT¹

Select configurations designed with extra proximal support to minimize back-up throughout the intervention¹

BALANCE OF TRACKABILITY AND SUPPORT²

End-to-end braided construction provides trackability for vessel selection and allows for maximum flow rate while maintaining catheter support for stable interventions²

ENVOY™
guiding catheter

ENVOY™ XB
guiding catheter

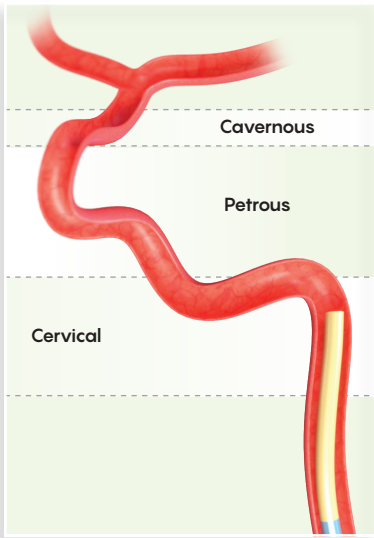
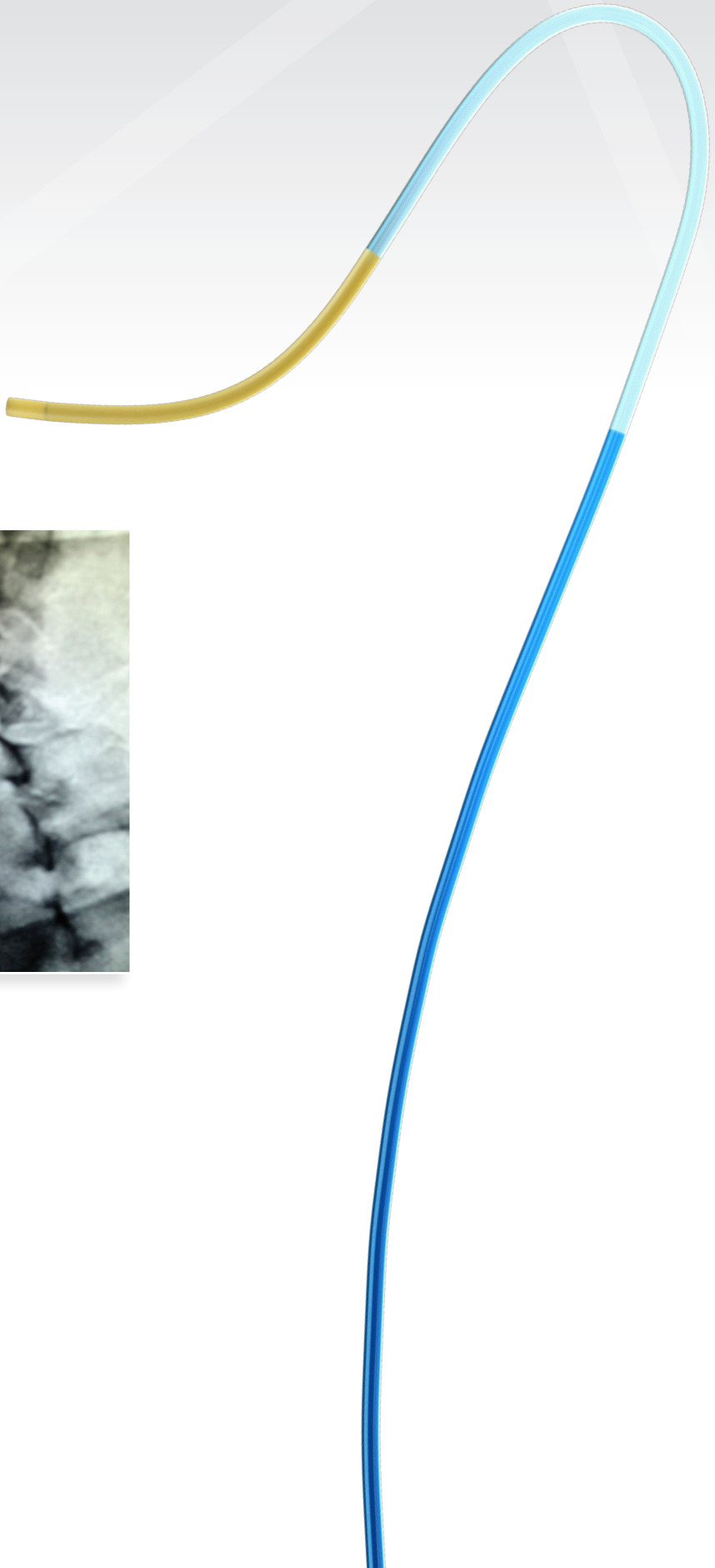
ENVOY™ DA
guiding catheter

ENVOY™ DA XB
guiding catheter

The original guiding catheter.

IMPROVED TRACKABILITY^{b,2}

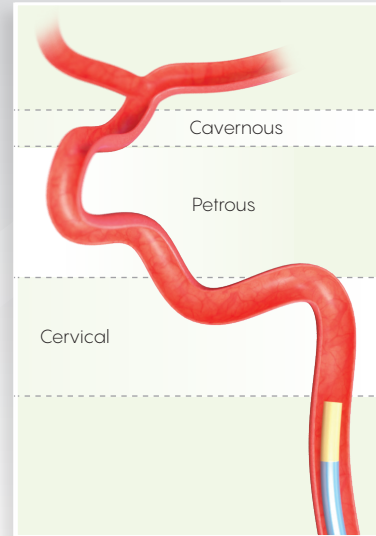
7F ENVOY Guiding Catheter requires less work to track compared to other 7F guiding catheters and 6F long sheaths.²



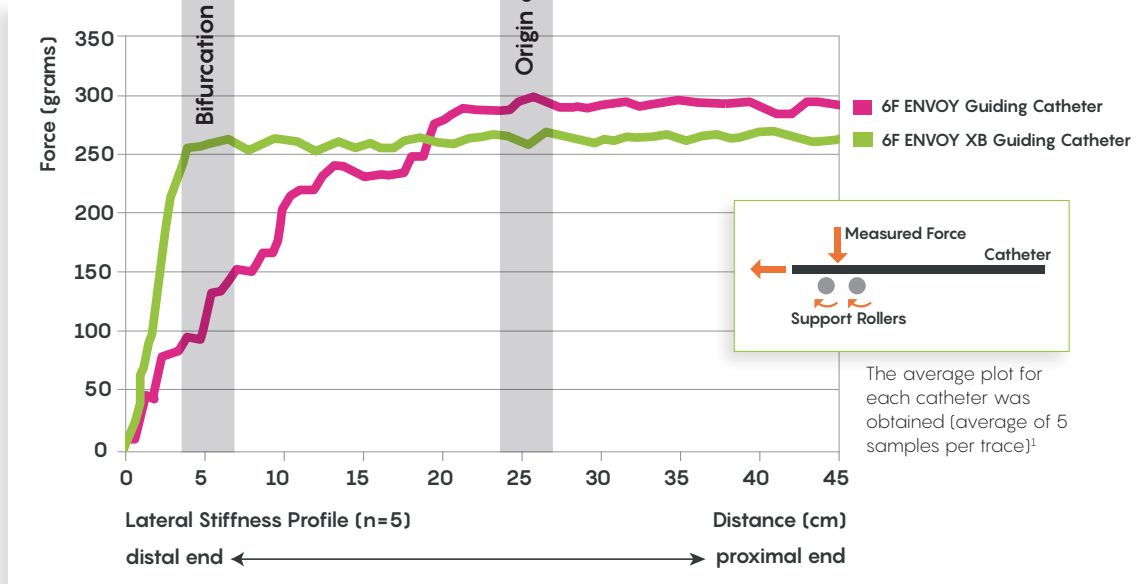
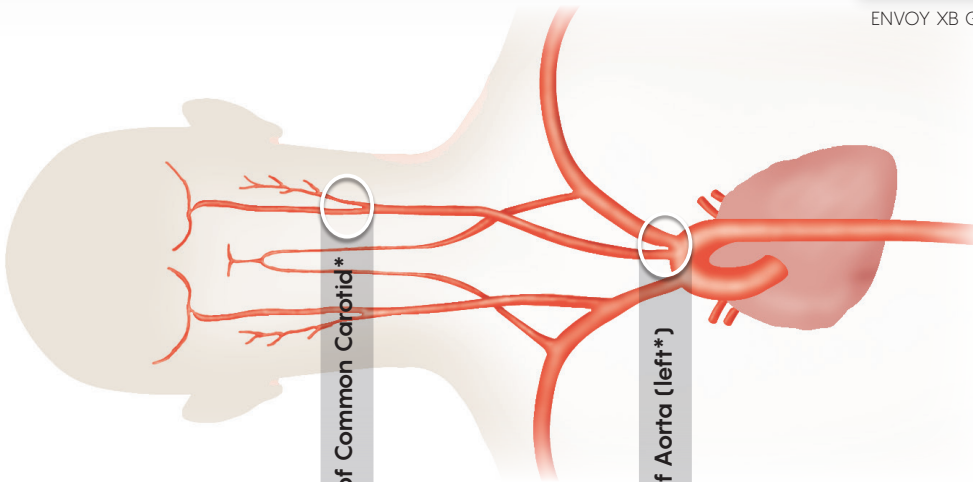
Designed to provide additional back-up support when more stability is required.²

IMPROVED BACK-UP SUPPORT²

ENVOY XB Guiding Catheter has the same end-to-end braided construction as the ENVOY Catheter with an estimated 29% additional back-up support at the bifurcation of the common carotid².



ENVOY XB Guiding Catheters are available in 6F.



*Anatomical placement is estimation based on common adult anatomy.



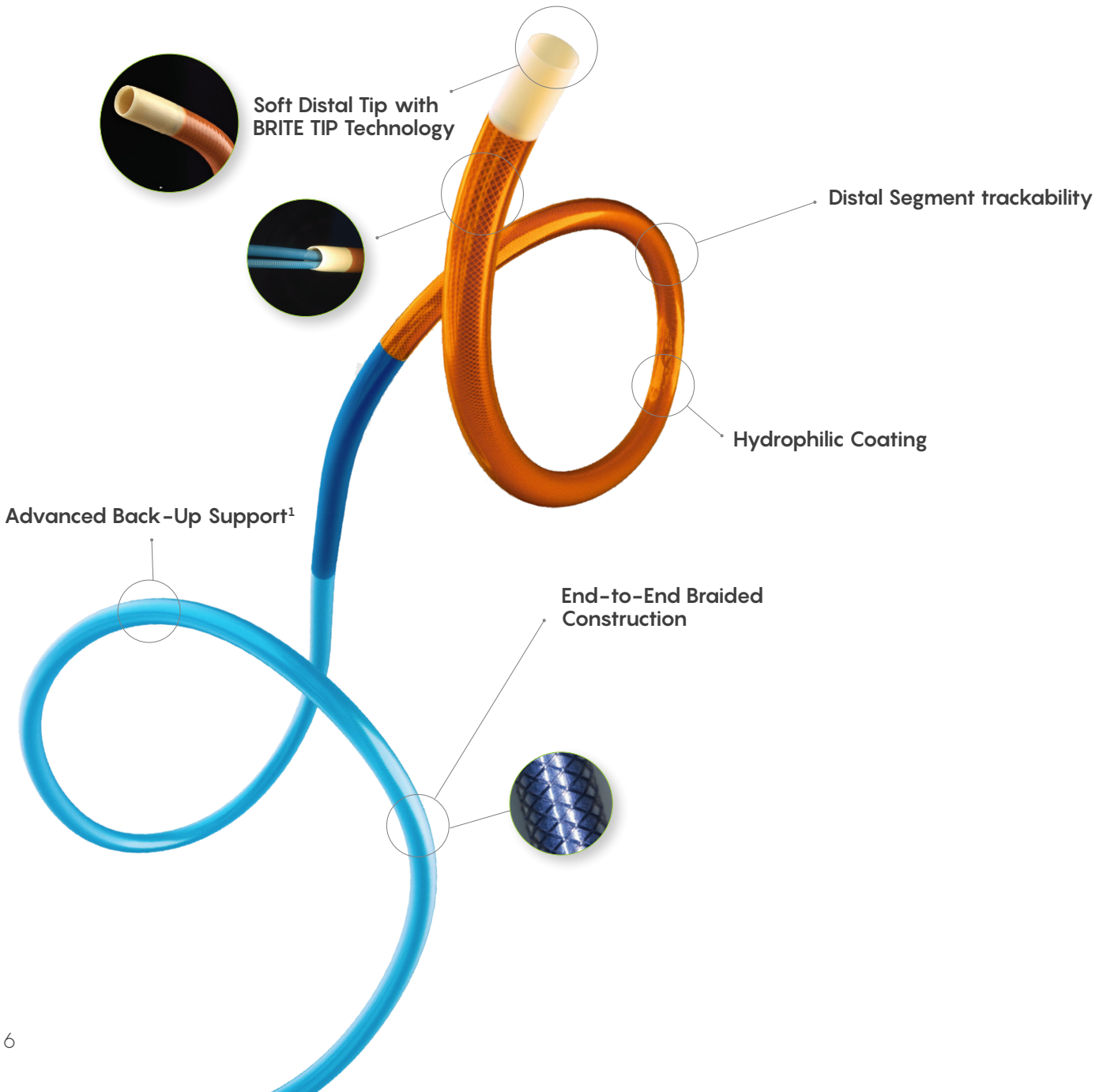
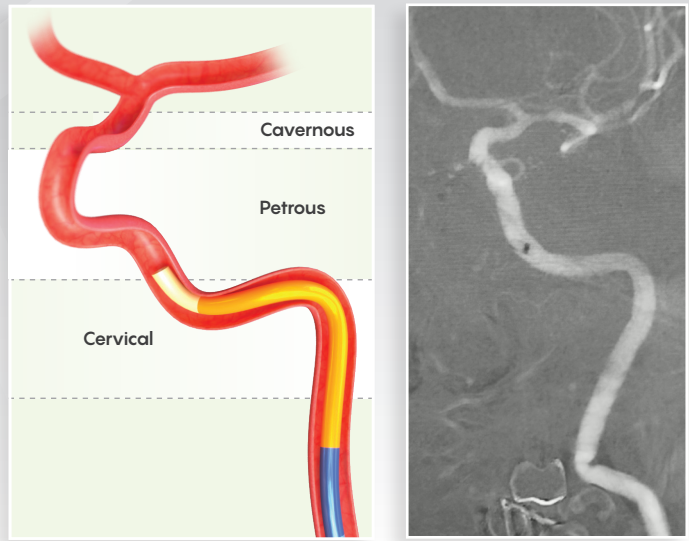
ENVOY™ DA

guiding catheter

Designed for distal access.

DISTAL SEGMENT FLEXIBILITY TO ACHIEVE CATHETER SUPPORT¹

Distal 8cm flexible section allows access to more distal anatomy to achieve geometric anchoring in petrocavernous ICA and provide support for a stable procedure¹.



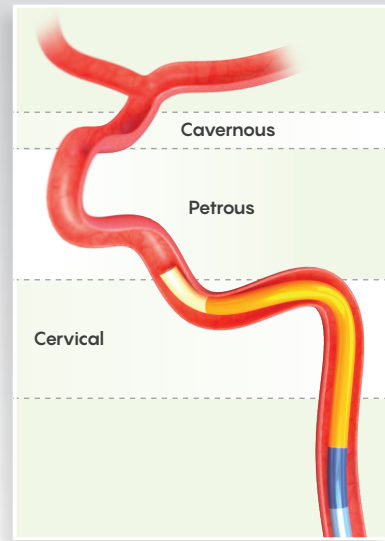
ENVOY™ DA XB

guiding catheter

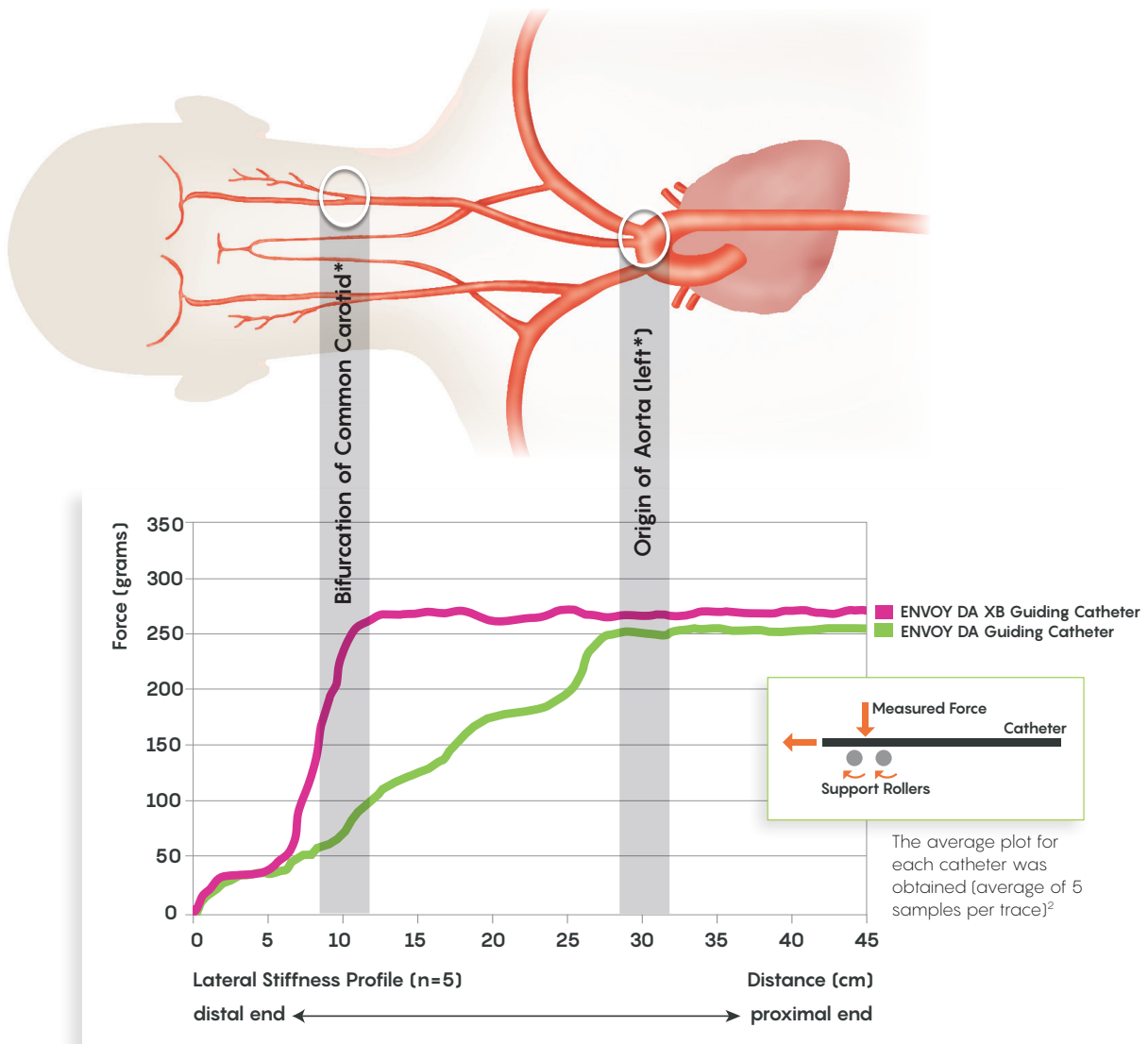
Designed to provide distal access combined with superior support.^{a,1}

ADVANCED BACK-UP SUPPORT¹

ENVOY DA XB Guiding Catheter has the same end-to-end braided construction as the ENVOY DA Catheter with an estimated 20% additional back-up support at the bifurcation of the common carotid¹.



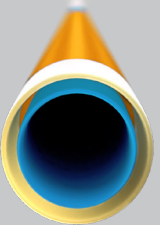

ENVOY DA XB Guiding Catheters are available in 6F



^aAnatomical placement is an estimation based on common adult anatomy

The ENVOY Family of Guiding Catheters allows for compatibility with multiple devices, providing versatility.

Recommended Compatibility

	5F ENVOY Guiding Catheter	6F ENVOY Guiding Catheter	6F ENVOY DA Guiding Catheter	7F ENVOY Guiding Catheter
Inner Diameter	.056"	.070"	.071"	.078"
 <p>One Device Compatibility combined outer diameter Requires .003" clearance</p>	.053" or less (4.0F)	.067" or less (5.1F)	.068" or less (5.2F)	.075" or less (5.7F)
 <p>Two Device Compatibility combined outer diameter Requires .002" clearance</p>	.054" or less (4.1F)	.068" or less (5.2F)	.069" or less (5.3F)	.076" or less (5.8F)

1. 5F Intermediate Catheter
2. 3.0F/2.6F Microcatheter and 2.3F/1.9F Microcatheter

5 FRENCH

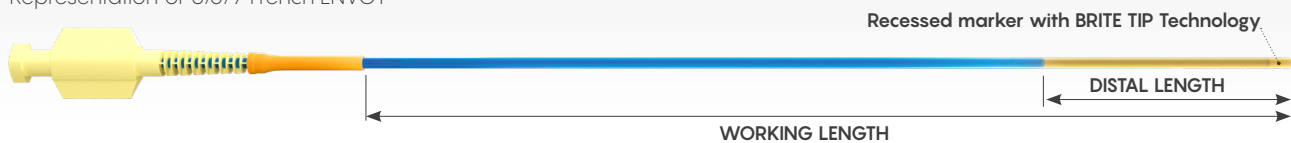
Contact your Sales Representative for pricing information.

Catalog No.	Outer Diameter	Inner Diameter (in)	Usable Length (cm)	Tip Shape	Description
ENVOY 5F					
55626090	5F	0.056"	90	STR	Straight
55626000	5F	0.056"	100	STR	Straight
55625690	5F	0.056"	90	MPC	Multipurpose C
55625600	5F	0.056"	100	MPC	Multipurpose C
55625890	5F	0.056"	90	MPD	Multipurpose D
55625800	5F	0.056"	100	MPD	Multipurpose D
55625090	5F	0.056"	90	CBL	Modified Cerebral
55625000	5F	0.056"	100	CBL	Modified Cerebral
55625490	5F	0.056"	90	H1	Headhunter 1
55625400	5F	0.056"	100	H1	Headhunter 1

Available in 5 shapes



Representation of 5/6/7 French ENVOY



6 FRENCH

Catalog No.	Outer Diameter	Inner Diameter (in)	Usable Length (cm)	Tip Shape	Description
ENVOY 6F					
67026090	6F	0.070"	90	STR	Straight
67026000	6F	0.070"	100	STR	Straight
67025690	6F	0.070"	90	MPC	Multipurpose C
67025600	6F	0.070"	100	MPC	Multipurpose C
67025890	6F	0.070"	90	MPD	Multipurpose D
67025800	6F	0.070"	100	MPD	Multipurpose D
67025090	6F	0.070"	90	CBL	Burke
67025000	6F	0.070"	100	CBL	Burke
67025290	6F	0.070"	90	SIM2	Simmons 2
67025200	6F	0.070"	100	SIM2	Simmons 2
67025490	6F	0.070"	90	H1	Headhunter 1
67025400	6F	0.070"	100	H1	Headhunter 1

ENVOY XB

67026090B	6F	0.070"	90	STR	Straight
67026000B	6F	0.070"	100	STR	Straight
67025690B	6F	0.070"	90	MPC	Multipurpose C
67025600B	6F	0.070"	100	MPC	Multipurpose C
67025890B	6F	0.070"	90	MPD	Multipurpose D
67025800B	6F	0.070"	100	MPD	Multipurpose D
67025090B	6F	0.070"	90	CBL	Burke
67025000B	6F	0.070"	100	CBL	Burke
67025290B	6F	0.070"	90	SIM2	Simmons 2
67025200B	6F	0.070"	100	SIM2	Simmons 2
67025490B	6F	0.070"	90	H1	Headhunter 1
67025400B	6F	0.070"	100	H1	Headhunter 1

Available in 6 shapes



7 FRENCH

Catalog No.	Outer Diameter	Inner Diameter (in)	Usable Length (cm)	Tip Shape	Description
ENVOY 7F					
77826090	7F	0.078"	90	STR	Straight
77826000	7F	0.078"	100	STR	Straight
77825690	7F	0.078"	90	MPC	Multipurpose C
77825600	7F	0.078"	100	MPC	Multipurpose C
77825890	7F	0.078"	90	MPD	Multipurpose D
77825800	7F	0.078"	100	MPD	Multipurpose D
77824890	7F	0.078"	90	CBL	Modified Cerebral
77824800	7F	0.078"	100	CBL	Modified Cerebral
77825290	7F	0.078"	90	SIM2	Simmons 2
77825200	7F	0.078"	100	SIM2	Simmons 2
77825490	7F	0.078"	90	H1	Headhunter 1
77825400	7F	0.078"	100	H1	Headhunter 1

**Available in
6 shapes**



Straight



Multipurpose C



Multipurpose D



Burke



Simmons 2



Headhunter 1

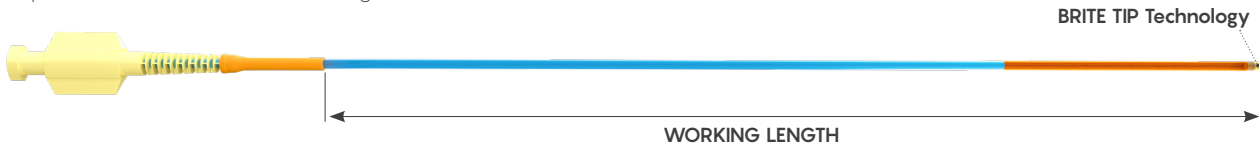
6 FRENCH DISTAL ACCESS

Catalog No.	Outer Diameter (DE)	Inner Diameter (in)	Length (cm)	Tip Shape	Description
ENVOY DA					
67126095D	6F	0.071"	95	STR	Straight
67126005D	6F	0.071"	105	STR	Straight
67125695D	6F	0.071"	95	MPC	Multipurpose C
67125605D	6F	0.071"	105	MPC	Multipurpose C
67125895D	6F	0.071"	95	MPD	Multipurpose D
67125805D	6F	0.071"	105	MPD	Multipurpose D
ENVOY DA XB					
67126095DB	6F	0.071"	95	8	Straight
67126005DB	6F	0.071"	105	8	Straight
67125695DB	6F	0.071"	95	8	Multipurpose C
67125605DB	6F <td 0.071"	105	8	Multipurpose C	
67125895DB	6F	0.071"	95	8	Multipurpose D
67125805DB	6F	0.071"	105	8	Multipurpose D

Available in
3 shapes



Representation of ENVOY DA Guiding Catheter





CERENOVUS

PART OF THE **Johnson & Johnson** FAMILY OF COMPANIES

Johnson & Johnson Medical Ltd.
Pinewood Campus, Nine Mile Ride
Wokingham, RG40 3EW
United Kingdom

Registered Office:
Baird House,
4 Lower Gilmore Bank,
Edinburgh EH3 9QP
Registered in Scotland, No.SC 132162

Legal Manufacturer:
Medos International SARL
Chemin-Blanc 38
CH-2400
Switzerland

^aCompared to Envoy DA

^bCompared to Envoy DA XB

¹CERENOVUS, 103014318 Competitive Test Report, April 2014, Data on File

²CERENOVUS, 7F Competitive Testing, June 2014, Data on File

Limited warranty and disclaimer: CERENOVUS products are sold with a limited warranty to the original purchaser against defects in workmanship and materials. Any other express or implied warranties, including warranties of merchantability or fitness, are hereby disclaimed. Please also refer to the package insert(s) or other labeling associated with the devices identified in this document for additional information.

Note: For recognized manufacturer, refer to the product label.

Not all products are currently available in all markets.

The third party trademarks used herein are the trademarks of their respective owners.

This publication is not intended for distribution outside of the EMEA region

© Johnson & Johnson Medical Ltd 2021. All rights reserved. 181551-210629 UK