

Supra Phob

Reġen



Introduction

It is made of premium quality Biocompatible Hydrophobic Acrylic Material fabricated by Nano Resolution High Technology machine with minimum polishing.

"Reġen" is a diffractive-refractive combined multifocal lens, ensuring good vision from all distances.

To top it all, the Advanced Preloaded System makes the IOL implantation simpler & safer.

Clear Vision at All Distances

- With the years of experience in multifocal IOL design, we have come up with the addition of +3.5D power to separate the near & distant images and to make them distinctive
- The light is evenly distributed between all focal points (near, intermediate & distant) resulting in a crystal clear vision from all distances
- The central zone is of 4.2mm diameter has 20 diffractive zones. The remaining 1.8mm portion of the lens has the refractive zone

The IOL is designed in such a way that the step height gradually declines towards the periphery. This guarantees excellent satisfaction for the patients allowing them to enjoy the Crystal Clear Vision under all light conditions

Special Features

- The Negative Asphericity provided in Reġen affords better visual quality than any other Spherical IOL
- The Reġen IOL has Ultraviolet filtering chromophores for better protection of retina from UV light
- The unique anterior diffractive design reduces the halos and yields superior vision
- Owing to the superior quality of the hydrophobic material, the posterior capsule securely adheres to the rear surface of the lens. The anterior placement of diffractive optics protects optical properties from YAG laser



NEAR



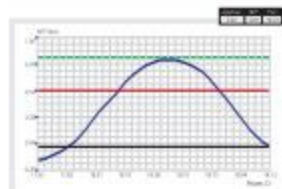
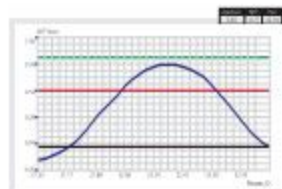
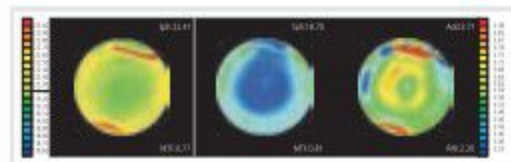
INTERMEDIATE



DISTANT

Technical Specification

Ref	SPMFDY200
Overall Length	13.00 mm
Optic Diameter	6.00 mm
Haptic Angulation	0°
Optic Design	Biconvex, with diffractive anterior surface
Diopter Range	7.00D to 30.00D (0.5D increment)
Material	Yellow Hydrophobic Acrylic
Refractive Index	1.520
Delivery System	Ready to inject preloaded
Special Features	Aspheric Optics & 360° Square Edge
A Constant	Ultrasound - Contact : 118.8 Optical Biometry : 119.1



Quality & Accuracy

- All lenses are tested for Resolution with Air Force Target immediately after Lathing
- Each "Reġen" is individually tested with Optical Bench System called IOLA-MFD for power, quality and MTF for testing near and far focal points
- Each "Reġen" is assured of higher MTF values. Higher the MTF value, higher the contrast from all distances and under all light conditions