

CE  
2803

Manufactured By...

 **shah**  
Eye Care (P) Ltd  
*the winds of change...*

ACCURATE

HIGH PERFORMANCE

ULTRA SHARP

DIMENSIONALLY PRECISE

CUTTING EDGE

TECHNOLOGY

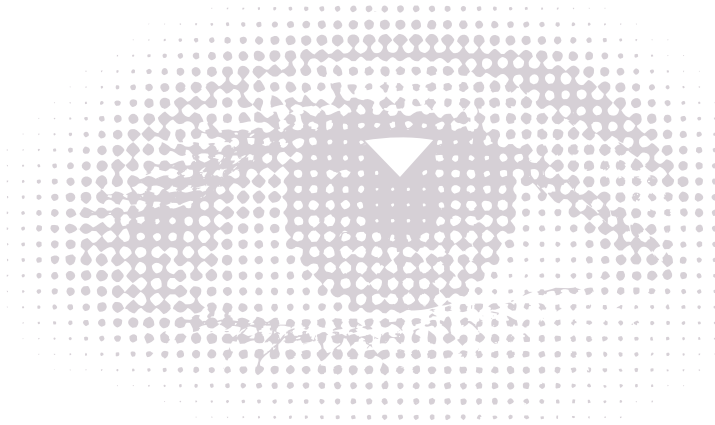


**acucut**

Redefining Accuracy

DISPOSABLE OPHTHALMIC MICRO SURGICAL KNIVES





### PRECISION YOU CAN SEE

- **Ultra Sharp**
- Excellent tactile response with minimal drag
- Exact Sharpness & Consistency
- Dimensionally Precise
- Flawless cutting edge
- Superior wound architecture
- Minimal wound leakage

### QUALITY YOU CAN FEEL

- High Performance
- Effortless tissue penetration
- Improved Surface Finish
- Our vacuum-purified double melt, hardened and tempered stainless steel technology produces a uniform strength and ductility that is critical to creating our precise cutting edge for smooth, uniform incisions
- Color Coding

### PERFORMANCE YOU CAN TRUST

- Accurate, well controlled incisions
- Tightly sealing incisions
- Meet Patient Performance demand
- Rapid wound healing
- Reduced potential for infection

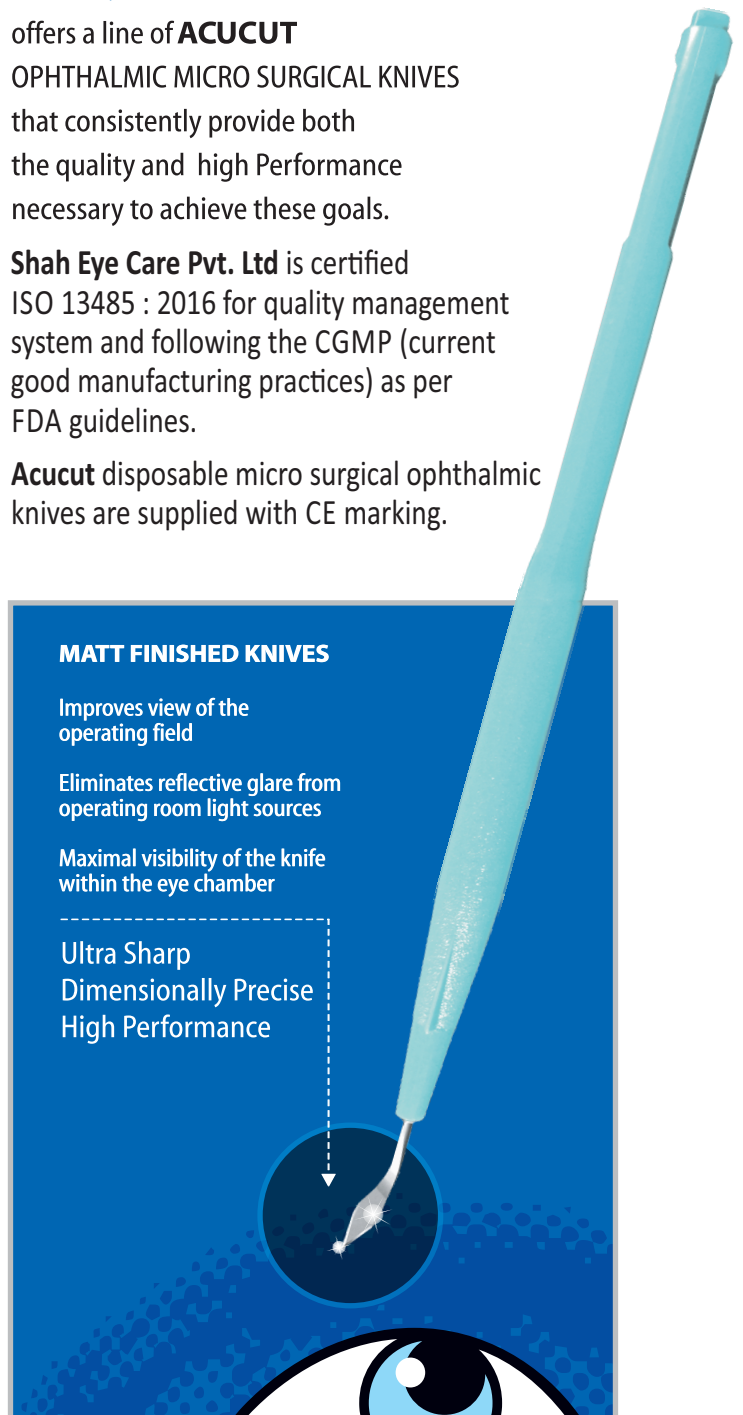
Ophthalmologist worldwide know that minimizing risks and meeting patient performance demand are the most important issues to consider when choosing the right surgical knives.

### Shah Eye Care Pvt. Ltd.

offers a line of **ACUCUT** OPTHALMIC MICRO SURGICAL KNIVES that consistently provide both the quality and high Performance necessary to achieve these goals.

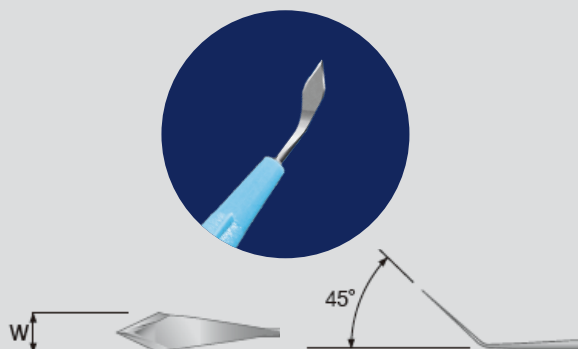
**Shah Eye Care Pvt. Ltd** is certified ISO 13485 : 2016 for quality management system and following the CGMP (current good manufacturing practices) as per FDA guidelines.

**Acucut** disposable micro surgical ophthalmic knives are supplied with CE marking.



## CLEAR CORNEA SINGLE BEVEL KNIVES

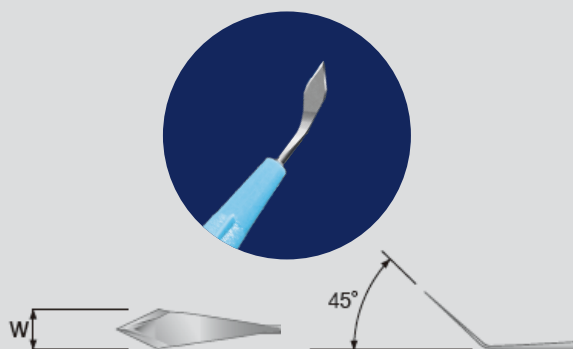
ACUCUT Clear Cornea single bevel knives manufactured by chemical etching process which creates ultra sharp blade, producing a single bevel perfectly suited to clear cornea incisions the new geometry allows high maneuverability for crafting the phaco self-sealing corneal tunnel



MODEL	DIMENSION WIDTH (W)	MODEL	DIMENSION WIDTH (W)
CC 10	1.0 mm	CC 25	2.5 mm
CC 12	1.2 mm	CC 26	2.6 mm
CC 14	1.4 mm	CC 265	2.65 mm
CC 16	1.6 mm	CC 275	2.75 mm
CC 18	1.8 mm	CC 28	2.8 mm
CC 20	2.0 mm	CC 285	2.85 mm
CC 22	2.2 mm	CC 30	3.0 mm
CC 24	2.4 mm	CC 32	3.2 mm

## CLEAR CORNEA DOUBLE BEVEL KNIVES

ACUCUT Clear Cornea Double Bevel Knives manufactured by chemical etching process creates ultra-sharp knives, producing a double bevel perfectly suited to clear cornea incision the new geometry allows high maneuverability for crafting the phaco self-sealing corneal tunnel.



MODEL	DIMENSION WIDTH (W)	MODEL	DIMENSION WIDTH (W)
CC DB 18	1.8 mm	CC DB 265	2.65 mm
CC DB 20	2.0 mm	CC DB 275	2.75 mm
CC DB 22	2.2 mm	CC DB 28	2.8 mm
CC DB 24	2.4 mm	CC DB 285	2.85 mm
CC DB 25	2.5 mm	CC DB 30	3.0 mm
CC DB 26	2.6 mm	CC DB 32	3.2 mm

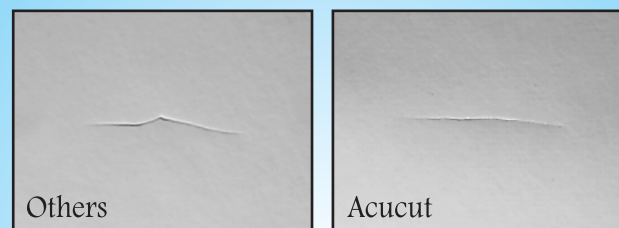
## MVR KNIVES

ACUCUT MVR Knives specially designed for very precise vitrectomy surgery, available in both straight & angled styles. These knives are used for centesis incision into sclera during vitreous body surgery. It is also used to create side ports during cataract surgery

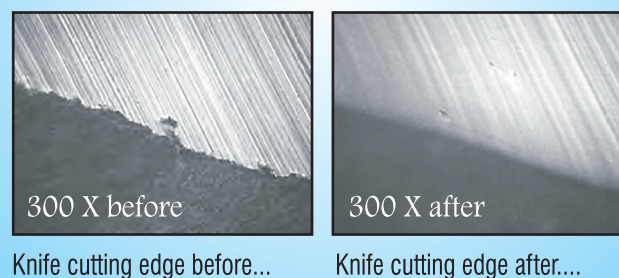


MODEL STRAIGHT	GAUGE	DIMENSION WIDTH (W) Tol : +/- 0.1 mm	MODEL STRAIGHT	GAUGE	DIMENSION WIDTH (W) Tol : +/- 0.1 mm
MVR 19	19G	1.4 mm	MVR 19 A	19A	1.4 mm
MVR 20	20G	1.2 mm	MVR 20 A	20A	1.2 mm
MVR 23	23G	1.0 mm	MVR 23 A	23A	1.0 mm
MVR 24	24G	0.8 mm	MVR 24 A	24A	0.8 mm
MVR 25	25G	0.6mm	MVR 25 A	25A	0.6mm

## CUTTING COMPARISON

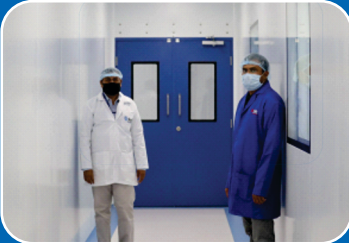


## ADVANTAGE OF ELECTROPOLISHING



Manufactured By...

**Shah**  
Eye Care (P) Ltd  
the winds of change...



## GLOBAL PRESENCE

"ACUCUT is globally accepted product in the medical device industry. It has authorized distributors/dealers in all states of India and more than 60 countries across the globe namely USA, Brazil, France, Germany, Italy, Norway, Spain, Portugal, Greece, Lithuania, Ukraine, Latvia, Poland, Czech Republic, Albania, Bulgaria, Romania, Turkey, Jordan, Morocco, Srilanka, Austria, Israel, Lebanon, Iran, Dubai, Kuwait, Kenya, Sudan, Pakistan, Philippines, Singapore, Hong kong, Thailand, Vietnam, Indonesia, Malaysia etc

## ACUCUT SHARPNESS

The ELETRO ETCHING technology non-grinding sharpening process begins by obtaining a high quality stainless steel that is hardened and tempered to a uniform tensile strength and toughness. This process produces a structure that can be finished to ensure a consistently sharp, precise cutting edge, High performance. In addition to minimizing tissue damage during incisions, the ultra cutting quality makes it possible to produce an accurate incision size at all times.

## ACUCUT CONSISTENCY

ELETRO ETCHING technology virtually assures that the 100th blade or needle is as sharp and dimensionally consistent as the first. The ELECTRO ETCHING technology is fully automated manufacturing minimizes operator handling to produce unparalleled consistency.

Manufactured By....



## Factory

Plot No.8 & 9, Karur Industrial Area, P. B. Road,  
Davangere - 577 006, Karnataka (state), India.

**Tele** +91 - 8192-252153, +91 - 8192 - 252161.

**Business Whatsapp** +91 - 7619550444

**Email** - sales@shaheycare.com,

**Web** - www.shaheycare.com

Distributed By...