

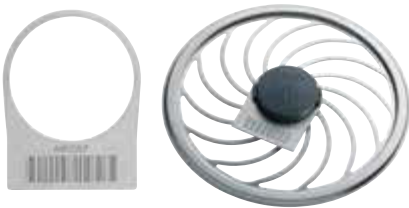
ACCESSORIES

FILTER ACCESSORIES



JK100	
-------	--

Universal filter retention plate for reusable filters and paper filters, fitting for all lid and body components of standard sterile containers.



JG731R	
--------	--

Bar code identification ring for filter retention plate. For recording the cycle count of reusable filter JK090. Lettering acc. to specification, up to 6 digits with bar code BC128A.



JK098	Outside dim. 245 x 100 x 6
-------	-------------------------------

Universal filter retention plate for reusable and paper filters, fitting for all lid and base components of mini, dental and scope sterile containers.



JK096	Outside dim. 197 x 197 x 40
-------	--------------------------------

Filter dispenser for round filters.



JP050	
-------	--

Filter insert for PRIMELine® and PRIMELine® PRO lids validated for 5,000 sterilization cycles.




JP055	
-------	--

Mounting handle for filter insert, PRIMELine® and PRIMELine® PRO lids.

CONSUMABLES

REUSABLE FILTERS




 Standard	Outside dim.
JK090	Ø 190

AESCULAP® reusable filter, round for use in up to 1,000 cleaning and sterilization cycles.

Order unit (PAK): Pack of 10





 Standard	Outside dim.
JK089	225 x 225

AESCULAP® reusable filter, square for legacy standard sterile containers, service life 1,000 cleaning and sterilization cycles.

Order unit (PAK): Pack of 10




 Mini	Outside dim.
 Dental	
JK091	95 x 215

AESCULAP® reusable filter for mini, dental and scope sterile containers with filter retention plate JK098, service life 1,000 cleaning and sterilization cycles.

Order unit (PAK): Pack of 2



 Dental	Outside dim.
JK092	171 x 231

AESCULAP® reusable filter for dental sterile containers without filter retention plate JK098, service life 1,000 cleaning and sterilization cycles.

Order unit (PAK): Pack of 2

MARKING PENS



JK086

Marking pen for AESCULAP® reusable filters

Order unit (PAK): Pack of 3

Angled Hi-Line XS handpieces for the Hi-Line XS burr range



GB756R

GB614R

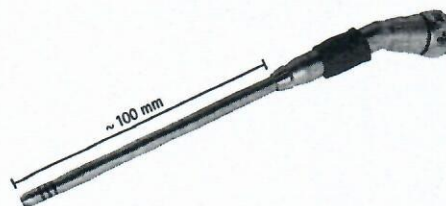
Hi-Line XS handpiece, angled
1 ring code;
spray nozzle GB761SU (not
included)



GB757R

GB614R

Hi-Line XS handpiece, angled
2 ring code;
spray nozzle GB762SU (not
included)



GB758R

GB614R

Hi-Line XS handpiece, angled
3 ring code;
spray nozzle GB763SU (not
included)

Hi-Line XS

Craniotome and multipurpose handpiece



GB740R

GB614R

Hi-Line XS craniotome and multi purpose handpiece

to be used with dura guards, drill depth guard and holding sleeve
GB741R - GB748R,
spray nozzle GB767SU (not included)



GB741R

GB615R

Hi-Line XS dura guard fixed;

1 ring code;
to be used with craniotome burr
GE420R, GE420SU, GE429SU



GB742R

GB615R

Hi-Line XS dura guard fixed;

2 ring code;
to be used with craniotome burr
GE520R, GE520SU, GE529SU



GB743R

GB615R

Hi-Line XS dura guard fixed;

3 ring code;
to be used with craniotome burr
GE620R, GE620SU, GE629SU



GB746R

GB615R

Hi-Line XS dura guard steerable;

1 ring code;
to be used with craniotome burr
GE420R, GE420SU, GE429SU



GB747R

GB615R

Hi-Line XS dura guard steerable;

2 ring code;
to be used with craniotome burr
GE520R, GE520SU, GE529SU