



OPERATING TABLES

CATALOGUE
OF PRODUCTS



TABLE OF CONTENTS

1. FLARE

Safe imaging table with TotalClear™ artifacts minimizing technology.

2. HYPERION

Advanced operating table, dedicated to bariatrics.

3. OPTIMA (SU-05.15, SU-05.20, SU-05.9, SU-05.12)

Electrically controlled, multidisciplinary modular operating table.

4. SU-03

Economic operating table with electric and manual control.

5. SU-02

Durable operating table without electric control.

6. SU-14

Economic operating table with electric height control.

7. SZ-01

Operating and treatment table.

A photograph of an operating room with a teal color overlay. Two surgeons in full PPE are visible. The surgeon in the foreground wears a head-mounted display. The text 'OPERATING TABLES' is centered in a white box.

OPERATING TABLES

Famed FLARE



SAFE IMAGING TABLE WITH ARTIFACTS MINIMIZING TECHNOLOGY

The Famed FLARE table has an ultra-thin, fully transparent, floating tabletop made of carbon fiber with the **TotalClear™** technology, which guarantees very clean, artifact-free images and the highest translucency parameter on the market that help to reduce radiation dose that affects the patient and medical personnel. **TotalClear™** tabletop facilitates the correct placement of the patient (floating tabletop with a joystick) and it is useful during cardiovascular surgery, neurosurgery, urological surgery, orthopedic surgery, pain management therapy, and endoscopic procedures.



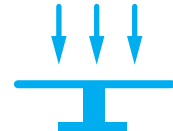
SAFETY OF WORK

- Operations with a maximum load of up to 230 kilograms;
- The market's best translucency parameter - 0.33 mm Al;
- Table parameters allow to reduce the dose of radiation transmitted to the patient and staff;
- **TotalClear™** technology minimizes artifacts in images, reducing the risk of misdiagnoses and the need for additional X-ray photos;
- Stable base in the shape of a letter "T" provides table stability and ensures patient safety;
- Available remote controls and joystick have double protection against accidental activation and unintentional movement of the tabletop.



CONVENIENCE OF WORK

- Ergonomic tabletop and low base provide (only 134 mm) plenty of space for easy maneuvering of C-arm;
- Accessory rails **InfiniMove™** can move over the entire length of the imaging field and enable an optimal selection of the mounting location of the accessories;
- Joystick for controlling the floating top makes it easier to set the tabletop in a comfortable position relative to the C-arm. It has two buttons to control the height of the table and additional "zero" position button;
- The contoured carbon fibre base provides more leg room, allowing a close-in approach to the patient;
- Table can be locked by the remote control;
- Column and base made of carbon fiber shorten the disinfection time;
- Possibility to control the table using the **rCover™** wireless remote control.



IMAGING

- The 1661 mm imaging window allows you to carry out a wide range of treatments;
- **1460 mm 360° imaging window** without spaces and additional extensions;
- **Extra 300 mm of imaging window** can be added by installing a carbon fiber extension;
- Side shift ± 125 mm facilitates easy repositioning according to C-arm;
- 2200 long mm tabletop for comfortable placement of tall patients;
- Joystick allows quick change of the tabletop position, it can be mounted on both sides of the tabletop;
- The motors allow tabletop movement also during tilts;
- Specialist attachments (e.g. orthopedic, gynecological or neurological) can be mounted on two fixed rails or two **InfiniMove™** adapters, whose position can be changed.



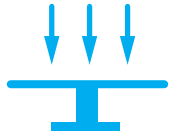
Total length 2200 mm | Total width 649 mm | Minimum height 760 mm | Maximum height 1160 mm | Trendelenburg 16° | Reverse-Trendelenburg 25°
Lateral tilt 20° | Longitudinal shift 530 mm | Translucency 0,33 mm Al | Maximum load 180/230 kg

Famed HYPERION



ADVANCED OPERATING TABLE DEDICATED TO BARIATRICS

The **Famed HYPERION** is a modern product designed for the latest trends in surgery. It can be used in most surgical procedures, it is perfect for bariatric operations. It was made of high quality stainless steel AISI 316L subjected to electropolishing process. It is mounted on the **MobiWeight™** column, it has been equipped with a stable mobile base with electric blockade. The mattresses are anti-static, waterproof and completely translucent to X-rays. Table surfaces and mattresses are completely resistant to disinfectants.



TRANSLUCENCY

- Compatible with C-arm;
- Certified fully translucent tabletop;
- Width and length of the top maximizes the imaging area - 1950 mm (in total);
- Combination of carbon fiber tabletop and 400 mm longitudinal shift allows intraoperative imaging and high image quality;
- Automatic recognition of the table orientation (recognizes the location of the leg segment and the headrest);
- Wide range of height adjustment and no protruding elements from the base guarantee a lot of working space for the C-arm.



WEIGHT CAPACITY

- The ideal platform for bariatric surgery;
- High maximum load up to 500 kg (with up/down movements; full articulation up to 400 kg);
- Wide tabletop with the possibility of adding extenders to increase the width (total tabletop width with side adapters - 770 mm);
- Height adjustment from 585 mm to 1050 mm;
- Patient positioning supported by electrohydraulic drives with three available controls;
- Soft, latex-free and antistatic mattresses with "shape memory" function;



LAPAROSCOPY

- Improved access during laparoscopic procedures;
- Low table position provides easy access for laparoscopic instruments;
- Separate or simultaneous, electrical adjustment of leg sections;
- Side tilts;
- Contoured base with plenty of foot room for the surgeon (174 mm).



Total length 2335 mm | Total width 630 mm | Minimum height 585 mm | Maximum height 1050 mm | Trendelenburg 40° | Reverse-Trendelenburg 40°
Lateral tilt 30° | Longitudinal shift 400 mm | Maximum load 500 kg

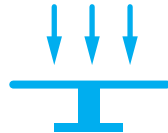
Famed OPTIMA (5.15,5.20)

COST-EFFECTIVE MULTIDISCIPLINARY TABLE MADE OF PREMIUM MATERIALS

Control the table from the remote control with ease, lock it in place effortlessly, quickly exchange the modular tabletop segments to suit your current case or use a full potential of 460 kg of a maximum load. Premium stainless steel meets premium carbon fiber. Quick connectors in the tabletop makes the exchange of the surgery-specific sections fast and easy. A variety of accessories dedicated to the **OPTIMA** allows it to be used in neurosurgery, orthopedic, cardiothoracic, ENT, MIS, bariatrics, gynecology or general surgery. In the manufacturing process of the OPTIMA table we use the best stainless steel on the market, the **AISI 316L**, which is also used for surgical instruments production.



MODULAR AND UNIVERSAL

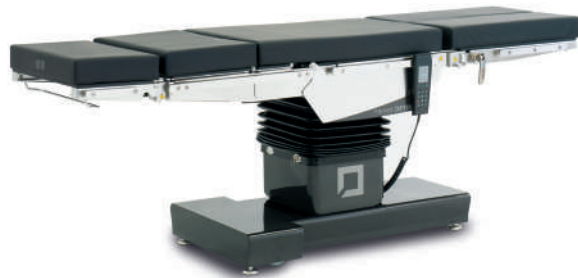


IDEAL FOR MIS AND MEDICAL IMAGING



QUICK, EASY AND SAFE CONTROL

- Well thought-out design of the tabletop limits the number of required extensions;
- Modular tabletop with dedicated extenders and extra sections;
- Quick connectors in the tabletop makes the exchange of the surgery-specific sections fast and easy;
- Unique rigid wedges connection with 100% anti-fail prevention - safety even in long orthopedic interventions;
- Variety of dedicated sections and accessories;
- 360° imaging-ready accessories;
- Variety of dedicated, reinforced bariatric accessories;
- High Trendelenburg settings to minimize negative factors of the surgery for patients.
- A fully translucent tabletop - **MAE 0,25 mm Al**;
- Low dose for the staff and patient during procedures with X-rays;
- Effortless, motorized longitudinal shift of **400 mm** for quick positioning;
- A slim, profiled base (**125 mm in height**) for easy and safe access for a C-arm;
- 360° 3D imaging thanks to full carbon fiber sections;
- Impact-ready carbon fiber in the base to prevent a C-arm from taking damage;
- Wide range of height adjustment and no protruding elements from the base guarantee a lot of space for a C-arm to operate;
- 1340 mm long imaging window (in standard set of the tabletop segments) with option to extend it.
- The table is equipped with a **bbSafe™** remote control with a large 2.8-inch IPS screen (great visibility from any direction);
- Safety backup - a wireless **rCover™** remote control;
- Override backup side panel **pDetach™**;
- Additional emergency manual unlock system to move the table out of the OR;
- The tabletop motions and lock are regulated from the remote control (only headrest regulated manually);
- Controls with accidental activation prevention systems;
- Advanced values on the remote's screen - smartphone-like battery status, tabletop position and a battery drainage warning system to predict the need of recharging.



Total length 2060 mm | Total width 600 mm | Minimum height 550 mm (Famed OPTIMA 5.20) / 680 mm | Maximum height 1020 mm (OPTIMA 5.20) / 1080 mm |
Trendelenburg 40° | Reverse-Trendelenburg 40° | Lateral tilt 30° | Longitudinal shift 400 mm | Maximum load 460 kg

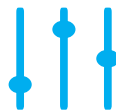
Famed OPTIMA (5.9, 5.12)

ELECTRICALLY CONTROLLED, MULTIDISCIPLINARY AND AFFORDABLE OPERATION TABLE

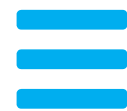
One of the most universal operating tables on the market. It combines a multitude of available positions with a high maximum load and a very good parameter of the tabletop translucency or longitudinal shift. A wide range of accessories allows it to be used in virtually any type of surgery. The electric control makes operation easier and reduces the time of the procedure. All steel elements are made of the best stainless steel on the market, the AISI 316L using the **InteliProtectPlus™** technology - electropolished steel guarantees easy disinfection and helps to protect against dust and dirt.



UNIVERSAL AND CONFIGURABLE



COMFORTABLE ELECTRICAL REGULATIONS



MANY CONTROL OPTIONS

- Four types of tabletop to choose from (four-, five- and six-segment, optionally also a dedicated orthopedic tabletop);
- Movable base with central locking system in two types to choose from: SU-5.9 with "T" shape base (feet lock) or SU-5.12 with "H" shape base (Supermobil, large wheels for easy maneuvering);
- Certified, fully translucent tabletop, reinforcement made of carbon fiber – perfect combination for the possibility of working with the C-arm;
- Removable antistatic mattresses made of polyurethane foam;
- Side rails with protection against dropping the accessories;
- Possibility of changing the headrest with footrests and changing the characteristics of the table.
- Height adjustment of the tabletop, side tilts, Trendelenburg and reverse-Trendelenburg positions, leveling the tabletop, kidney bench elevation and the inclination of the back rest are operated from the remote control by electrohydraulic drives;
- Longitudinal shift controlled by an electromechanical drive;
- Only the headrest and footrests are adjusted manually;
- Power supply with a durable fCharge™ battery.
- The table is supplied in standard with a wired **bbSafe™** remote control with IP54 waterproof rating, with a large 2.8-inch IPS screen,
- Optionally, the control over table can be performed using a wireless **rCover™** remote;
- Remotes have protection against accidental change of position as well as a table charge indicator and a warning about high energy consumption;
- For the convenience of personnel, the column can be fitted with the quickly dismountable **pDetach™** control panel;
- To ensure full functionality of the table, we can use the **AlterSafe™** alternative drive, which allows manual control of all electrohydraulic functions of the table.



Total length 2060*/2160** mm | Total width 550 mm | Minimum height 680 mm | Maximum height 1080 mm | Trendelenburg 40° | Reverse-Trendelenburg 40° | Lateral tilt 30° | Longitudinal shift 400 mm | Maximum load 460 kg

Famed SU-03



ECONOMIC OPERATING TABLE WITH ELECTRIC AND MANUAL CONTROL

A universal operating table that combines a multitude of available positions with a high maximum load and a very good level of tabletop translucency and longitudinal shift. A wide range of accessories allows it to be used in virtually any type of surgery. The electrical control makes it easier to operate, shortens the time of the procedure and the introduction of manual regulations in some of the movements made it possible to reduce the cost of the product. All steel elements are made of high quality stainless steel AISI 316L in technology **InteliProtectPlus™** - electropolished steel guarantees easy disinfection and helps to protect against dust and dirt.



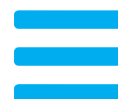
UNIVERSAL AND CONFIGURABLE

- Four types of tabletop to choose from (four-, five- and six-segment, optionally also a specialist orthopedic table);
- Movable base with central locking system in two types to choose from: "T" shape (feet lock) or "H" shape (Supermobil, large wheels for easy maneuvering);
- Certified fully translucent tabletop - the ability to work with the C-arm;
- Removable antistatic mattresses made of polyurethane foam;
- Side rails with protection against dropping the accessories;
- Possibility of changing the headrest with footrests and changing the characteristics of the table



COMFORTABLE CHANGE OF POSITION

- Height adjustment of tabletop, side tilts, Trendelenburg and reverse-Trendelenburg positions, leveling of the tabletop are operated from the remote control by electrohydraulic drives;
- Elevation of the kidney bench, inclination of the back rest, longitudinal shift, headrest and footrests are adjusted manually;
- Optionally, the backrest segment can be controlled from the remote control (electrohydraulic actuator);
- Power supply with a durable **fCharge™** battery.



MANY CONTROL OPTIONS

- The table is supplied in standard with a wired **bbSafe™** remote control with IP54 waterproof rating, with a large 2.8-inch IPS screen,
- Optionally, the control over table can be performed using a wireless **rCover™** remote;
- Remotes have protection against accidental change of position as well as a table charge indicator and a warning about high energy consumption;
- For the convenience of personnel, the column can be fitted with the quickly dismountable **pDetach™** control panel;
- To ensure full functionality of the table, we can use the **AlterSafe™** alternative drive, which allows manual control of all electrohydraulic functions of the table.



Total length 2060*/2160** mm | Total width 550 mm | Minimum height 680 mm | Maximum height 1080 mm | Trendelenburg 40° | Reverse-Trendelenburg 40° | Lateral tilt 30° | Longitudinal shift 340 mm | Maximum load 350 kg

Famed SU-02



DURABLE OPERATING TABLE WITHOUT ELECTRIC CONTROL

A fully functional operating table without electrical control eliminates the risk of failure to almost zero. This table is great for use in places with no access to the electrical network and where the simplicity of construction and service is appreciated. A wide range of accessories allows it to be used in virtually any type of surgery. All steel elements are made of high quality stainless steel AISI 316L in technology **InteliProtectPlus™** - electropolished steel guarantees easy disinfection and helps to protect against dust and dirt.



UNIVERSAL

- Four types of tabletop to choose from (four-, five- and six-segment, optionally also a specialist orthopedic table);
- Movable base with central locking system in two types to choose from: "T" shape (feet lock) or "H" shape (Supermobil, large wheels for easy maneuvering);
- Certified fully translucent tabletop - the ability to work with the C-arm;
- Removable antistatic mattresses made of polyurethane foam;
- Side rails with protection against dropping the accessories;
- Possibility of changing the headrest with footrests and changing the characteristics of the table.



SIMPLICITY OF REGULATION

- Height adjustment of the tabletop carried out with a foot pump;
- Side tilts, Trendelenburg and reverse-Trendelenburg positions, kidney bench, inclination of the back rest, headrests and footrests are adjusted manually;
- Most movements requiring effort from the staff are assisted - by gas springs or by a hydraulic pump.



MULTIPLE POSITION

- Tilting footrests allow easy spreading of the patient's legs;
- Quick dismantling of the leg sections allows a close approach to the patient;
- The presence of rails along the entire length of the segment allows for convenient fixing an accessory in a convenient place for the surgeon;
- The table is compatible with specialist neurosurgical or orthopedic devices;
- Despite its light weight, the table is very stable and has a high maximum load capacity, which makes it possible to mount large and heavy accessories.



Total length 2060*/2160** mm | **Total width** 550 mm | **Minimum height** 685 mm | **Maximum height** 985 mm | **Trendelenburg** 30°
Reverse-Trendelenburg 30° | **Lateral tilt** 25° | **Maximum load** 200 kg

Famed SU-14

ECONOMIC OPERATING TABLE WITH ELECTRIC HEIGHT CONTROL

The table is designed to support the patient during treatments and surgeries in general surgery, vascular surgery, cardiac surgery, neurosurgery, urology, gynecology, proctology, laryngology, ophthalmology and others. The electrical control with the possibility of programming three predefined table settings helps to make the operation easier and shortens the procedure time. The construction made of high quality carbon steel, coated with polyester-epoxy powder varnish combined with a composite base ensures easy and quick disinfection. The table top segments, which are transparent for X-rays, allow for taking X-rays and monitoring the patient with the C-arm.



UNIVERSAL

The **Famed SU-14** operating table provides a comprehensive solution for outpatient surgery or one-day surgery. It is a combination of an operating table with a transport trolley. Stable large diameter wheels allow you to overcome obstacles in the corridors, built-in oxygen tank holder ensures patient safety.



ELECTRIC REGULATIONS

By remote control we can adjust the height of the tabletop, side tilts, Trendelenburg and reverse-Trendelenburg. The control system makes it possible to program three predefined table settings in the **bbSafe™** remote control (e.g. tabletop).



HIGH QUALITY

The **Famed SU-14** operating table is being created in Poland. The entire production is focused at the factory in Żywiec, giving us a constant opportunity to control the quality of our product. The highest quality steel will protect your table from damage and ensure long-lasting, trouble-free operation. All steel elements are made of high-grade stainless steel using the **InteliProtect™** technology - matte finish with additional zinc protection, surface resistant to disinfectants.



Total length 2030 mm | Total width 650 mm | Minimum height 690 mm | Maximum height 990 mm | Trendelenburg 20° |
Reverse-Trendelenburg 20° | Maximum load 200 kg

Famed SZ-01

OPERATING AND TREATMENT TABLE WITHOUT ELECTRIC CONTROL

Functional and affordable operating and treatment table designed to perform uncomplicated procedures for dressing, surgery, orthopaedics, proctology, urology, gynecology, laryngology and others. Simple construction made of high quality galvanized steel covered with powder varnish facilitates cleaning and disinfection. The lack of electric control is perfect for the most extreme conditions. Seamless mattresses prevent liquids from penetrating inside. Height adjustment is controlled by a hydraulic pump, and other functions are supported by gas springs.



MOBILITY AND FUNCTIONALITY

The SZ-01 operating table is a simple and durable construction, the use of which extends beyond the operating room. Gynecology, orthopedics, ENT and orthopedic - the list of applications is very long and depends on the idea and selected accessories.



A RICH CHOICE OF ACCESSORIES

See our comprehensive catalogue and find out the options of SZ-01 table customisation. The choice of a suitable attachment will extend the table functionality.



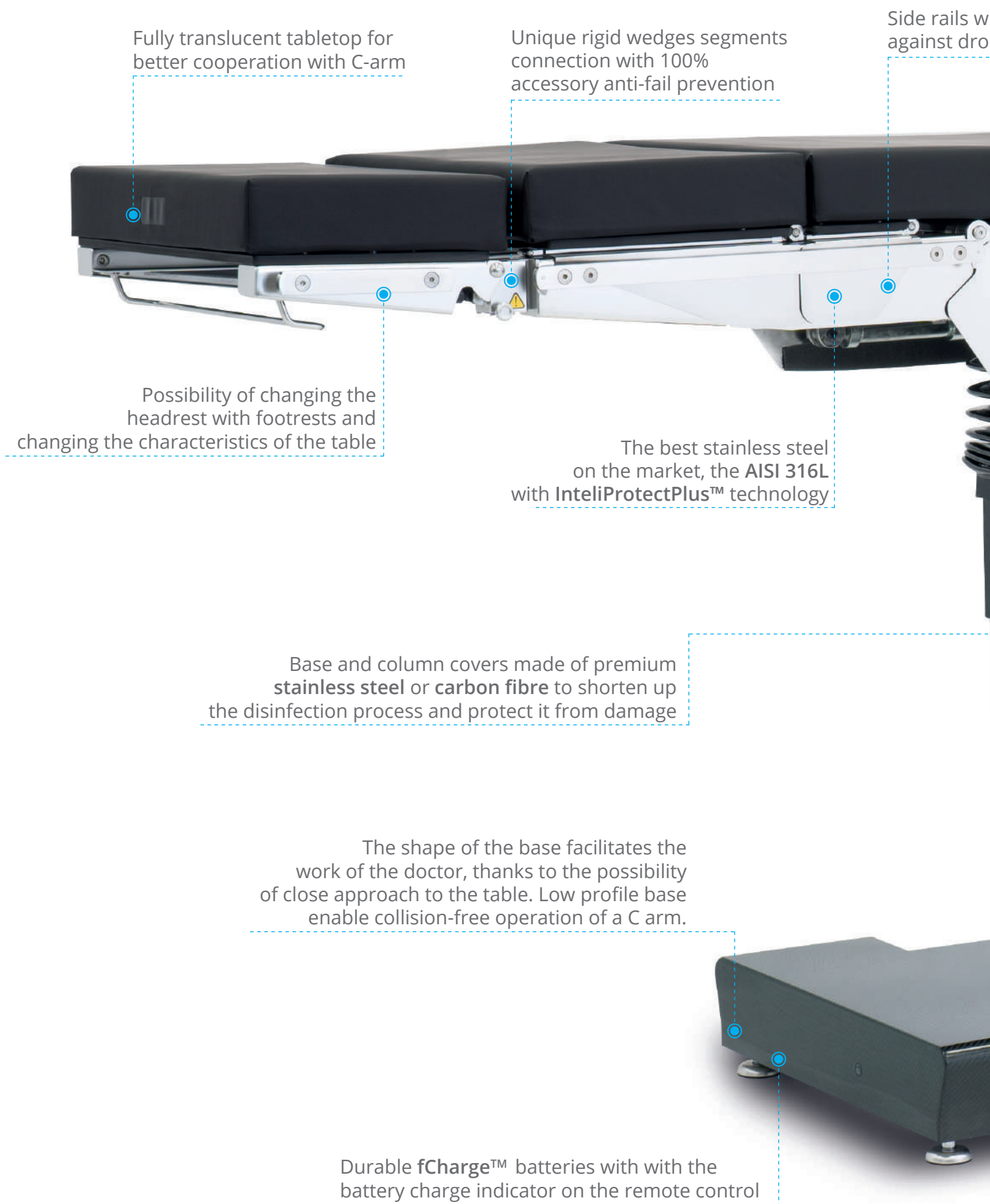
HIGH QUALITY

The entire production is focused at the factory in Żywiec, giving us a constant opportunity to control the quality of our product. The highest quality steel will protect your table from damage and ensure long-lasting, trouble-free operation. All steel elements are made of high-grade stainless steel using the **InteliProtect™** technology - matte finish with additional zinc protection, surface resistant to disinfectants.



Total length 2020 mm | Total width 550 mm | Minimum height 810 mm | Maximum height 1050 mm | Trendelenburg 25° | Reverse-Trendelenburg 12°
Maximum load 150 kg

Features of the Famed operating tables



with protection
protecting the accessories

Fully waterproof, anti-static
pressure ulcer relief mattresses

Wide range of accessories
to suit individual table models

Remotes have protection
against accidental change of position

Many options to control the table: manual,
from wired **bbSafe™** remote control,
wireless **rCover™** remote, **pDetach™**
control panel or **AlterSafe™** alternative drive.

Stable and mobile base with a
manual or remote lock and four supports

Mobile base with central locking system available in two versions:
"T" shape (slim) or "H" shape (Supermobile, with large wheels for
easy maneuvering)

TECHNICAL DATA

	FLARE	HYPERION	OPTIMA (SU-05.15)	OPTIMA (SU-05.20)
Tabletop total length	2200 mm	2335 mm	2060 mm	2060 mm
Total width	649 mm	630 mm	600 mm	600 mm
Height regulation (without mattress)	760 - 1160 mm	585 - 1050 mm	680 - 1080 mm	550 - 1020 mm
Trendelenburg position	16°	40°	40°	40°
Reverse-Trendelenburg	25°	40°	40°	40°
Lateral tilts	20°	30°	30°	30°
Longitudinal shift	530 mm	400 mm	400 mm	400 mm
Level of protection	IP-X4	IP-X4	IP-X4	IP-X4
Maximum load	180/230 kg	500 kg	460 kg	460 kg

* four and five segments

** six segments

Technologies applied in the products:



IntelProtectPlus™

Operating tables in the IntelProtectPlus™ technology are made of high-alloy, corrosion-resistant AISI 316L stainless steel (marked according to European standards as X2CrNiMo17-12-2 / 1.4404) - we use the best stainless steel on the operating table market. Due to the high percentage of nickel, molybdenum in the mixture and low carbon content (<0.03%), 316L steel is characterized by high tolerance to alkaline and acidic environments. This allows its use, among others in the manufacture of surgical instruments. In order to provide additional steel protection, we have also implemented the electropolishing and passivation process. Electropolishing is a process whose purpose is to remove impurities, smooth and restore the surface of the steel to the proper passive layer that protects it against corrosion. Thanks to the IntelProtectPlus™ technology, chromium atoms accumulate on the steel surfaces of our products and their structure becomes harder. In addition, the smoothed and shiny surface guarantees easy disinfection and maintaining the product clean. It also helps to protect it against dust and dirt. Steel surfaces with IntelProtectPlus™ technology are still protected even when the surface gets scratched - in the process of atmospheric oxygen getting to the damaged spot, passivation occurs and the risk of corrosion is excluded. As the only manufacturer of operating tables, the places that were the subject of mechanical treatment are additionally secured with a protective layer of a zinc-based agent.



fCharge™

All battery cells powering Famed Żywiec products are carefully selected from a reliable supplier we have been cooperating with for many years. Each **fCharge™** battery cell undergoes inspection at an external company, then goes through multiple tests at several technology departments of our factory. The **fCharge™**, fast charging technology charger used in our products allows for quick supply of the necessary amount of electricity to carry out the first treatments. A minimum of several dozen guaranteed full work cycles ensures safety in the course of performing every medical procedure.



AlterSafe™

The alternative drive ensures operation of all electric table adjustment options in the event of control circuit failure or essential power supply failure. Tables with the alternative **AlterSafe™** technology drive have two independently operating drive systems: electro-hydraulic and mechanical-hydraulic. The alternative mechanical-hydraulic **AlterSafe™** system allows for the operation of all functions available through the electrical system. Individual table functions are selected using a lever placed in the table base and are carried out using a foot pump.



rCover™

The wireless remote control for the operating table is an option for the facilities which require maximum convenience and usability. This controller offers all the features of a wired remote control, a powerful battery pack and a docking station with a wireless charger. It is equipped in **bbSafe™** and **rCover™** technology - built-in protection against interference with other wireless devices that work in the vicinity of the operating room. Part of the system is also a special table and the remote-control pairing procedure and appropriately calculated signal power limit.

OPTIMA (SU-05.9 and SU-05.12)	SU-03	SU-02	SU-14	SZ-01
2060*/2160** mm	2060*/2160** mm	2060*/2160** mm	2030 mm	2020 mm
550 mm	550 mm	550 mm	650 mm	550 mm
680 - 1080 mm	680 - 1080 mm	685 - 985 mm	690 - 990 mm	810 - 1050 mm
40°	40°	30°	20°	25°
40°	40°	30°	20°	12°
30°	30°	25°	20°	-
400 mm	340 mm	-	-	-
IP-X4	IP-X4	IP-X4	IP-X4	IP-X4
460 kg	350 kg	200 kg	200 kg	150 kg



bbSafe™

Wired remote control with 2.8" screen in IPS technology, which enables quick and precise change of position and real-time preview of setting values. For patient safety, we have designed the **bbSafe™** system – triple protection against accidental change of position and a warning about high energy consumption. Following an adjustable idle time, the remote control automatically switches to standby mode. In addition, there is a two-step process of changing the bed's position – the operator first presses a button corresponding to the category of movement, and then, in the next step, enters information about its direction. Moreover, the **bbSafe™** system warns the user when the movement of the table puts a heavy load on the battery cells – this allows you to predict the power consumption and plan battery charging accordingly. The remote control meets the IP54 standard.



pDetach™

Optional control of the operating table located on the column. This additional control module is a removable panel that can be detached from the column and operated like a traditional remote control. It provides full functionality in setting the table position. The panel has a convenient **pDetach™**, magnetic mechanism, which protects it against getting accidentally brought down, while providing a simple and quick disassembly.



MobiWeight™

The Hyperion table has a column with systems that allow for changing the table position with the maximum load. **MobiWeight™** system cares for patient safety and does not drain too much energy from the battery cells. It also controls the table movement in a smooth way, slowly initiating any position changes. Thanks to its double system of height adjustment, **MobiWeight™** facilitates table lowering to the height of 585 mm. It makes it much easier to correctly position a patient on Hyperion table top. High load capacity does not exclude a good value of longitudinal travel parameter. **MobiWeight™** allows for top travel distance of up to 400 mm.



TotalClear™

TotalClear™ is the effect of years of designing various prototype carbon fiber tops, experiments with types of fibers and their arrangement. Due to extensive research in a professional measuring institute, the final structure and direction of fiber arrangement in **TotalClear™** system allows for the reduction of the number of artifacts on images. As a result, the risk of misdiagnoses based on imaging is reduced to the minimum. The tabletop made with the use of **TotalClear™** technology not only has a very good translucency parameter, but above all it helps obtain images that are very clear and free from distortions. It ensures diagnostic reliability and the certainty of your every move. The table top made in **TotalClear™** technology does not have any crossbeams (frame-less structure). It is made of a uniform carbon plate with n° translucency.



InfiniMove™

The table top has special immersion for stepless mounting of additional accessories. The main features of the **InfiniMove™** adapters are the possibility to change the place of equipment assembly and quick disassembly of the rails (so that they do not interfere during the procedure and do not create disturbances during imaging). Adapters have latches at their ends that protect the accessories against accidental disassembly.

Famed Żywiec Sp. z o.o.

ul. Fabryczna 1
34-300 Żywiec, Polska

Office:

tel.: +48 33 866 62 00

fax: +48 33 475 58 90

Export:

tel.: +48 33 866 63 75

fax: +48 33 861 30 79

export@famed.com.pl

www.famed.com.pl



Edition 98/2022/12/11. Famed Żywiec reserves the right to modify the product and specification as part of technical progress. All illustrations and photos used in this material are for illustrative purposes only and may not reflect the finished product. The people shown in the photos are not medical professionals. They are models. The device presented in the catalog is intended for use in health care facilities by authorized persons after having read the manual (IFU).