

WATER METERS

SJ-SDC PLUS

Single-Jet Dry Type (Velocity)



NWM SJ-SDC PLUS is IMPELLER (turbine), single jet water meter with dry type register for residential application with sizes from Dn15 to Dn25.

Characteristics:

- All the Materials in contact with water, consciously selected by the known resistance to corrosion;
- Cold water meter under current standard for lower than 30°C (T30), but NWM SJ-SDC PLUS can be used safely in water temperature up to 50°C (T50);
- Rotary indicator register with 7 Rollers and 2 Pointers for easy reading;

NWM - Ningbo Water Meter Co., Ltd.
Add: No. 99, Beihai Road Ningbo 315033 China
Tel/Fax: +86 574 87376630/87376630
Website: www.chinawatermeter.com
E-mail: wzhnbwm@vip.163.com



WATER METERS

SJ-SDC PLUS

Size	Dn15	Dn20	Dn25
L	110	130	160
L1	204	234	280
D	G3/4B	G1B	G1-1/4B
d	R1/2	R3/4	R1
H	84.5	84.5	106
H1	145.5	145.5	167
W	81.5	81.5	84

L1: the total length with connection and the gasket without compression.

Main Technical Data:

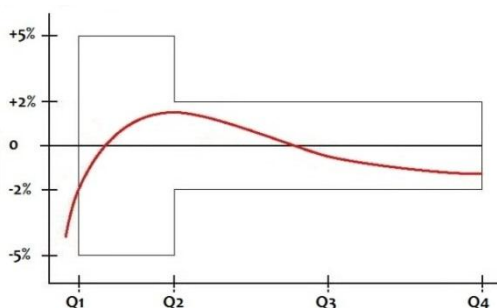
Under En 14154:2005+A1+A2, OIML R49: 2006(E), ISO 4064: 2005(E)

Size	Dn	Dn15	Dn20	Dn25
R	Q3/Q1	160	160	160
Q4	m ³ /h	3,125	5	7,875
Q3	m ³ /h	2,5	4	6,3
Q2	l/h	25	40	63
Q1	l/h	15,625	25	39,375
Max. Reading	m ³	99999.9999		
Min. Reading	Liter	0.02		
Pressure Loss	ΔP	63		
Max. Pressure	MAP	16		
Max. Temperature	T	T30 or T50		

Max. Permission Error:

From Q1 inclusive up to but excluding Q2 is $\pm 5\%$;

From Q2 inclusive up to and including Q4 is $\pm 2\%$;



NWM - Ningbo Water Meter Co., Ltd.
 Add: No. 99, Beihai Road Ningbo 315033 China
 Tel/Fax: +86 574 87376630/87376630
 Website: www.chinawatermeter.com
 E-mail: wzhnbwm@vip.163.com



WATER METERS

SJ-SDC PLUS

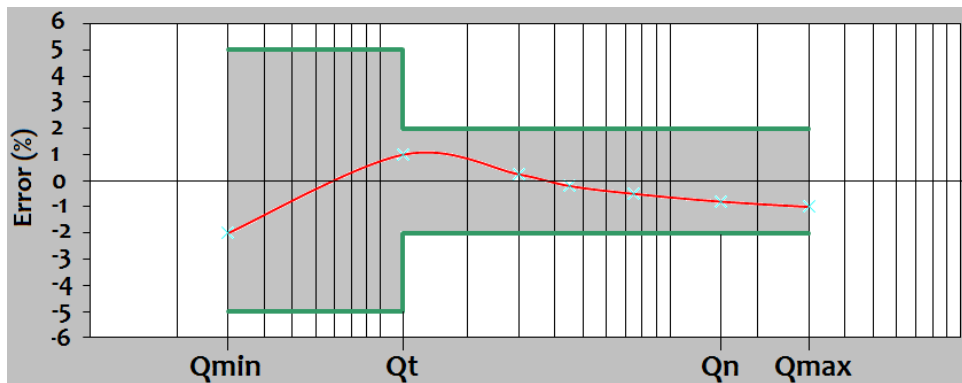
SJ-SDC PLUS also meets to the International Standard: ISO 4064:1993 Standard, main technical data as:

Size	Dn	Dn15	Dn20	Dn25
Metrological Class	C	C	C	C
Qmax	m ³ /h	3	5	7
Qn	m ³ /h	1,5	2,5	3,5
Qt	l/h	22,5	37,5	52,5
Qmin	l/h	15	25	35
Max. Reading	m ³	99999,9999		
Min. Reading	Liter	0.05		
Pressure Loss	Bars	ΔP<1 at Qmax ΔP<0.25 at Qn		
Max. Pressure	Bars	PN16		
Max. Temperate	°C	40		

MAX. PERMISSION ERROR:

From Qmin inclusive up to but excluding Qt is ± 5%;

From Qt inclusive up to and including Qmax is ± 2%;



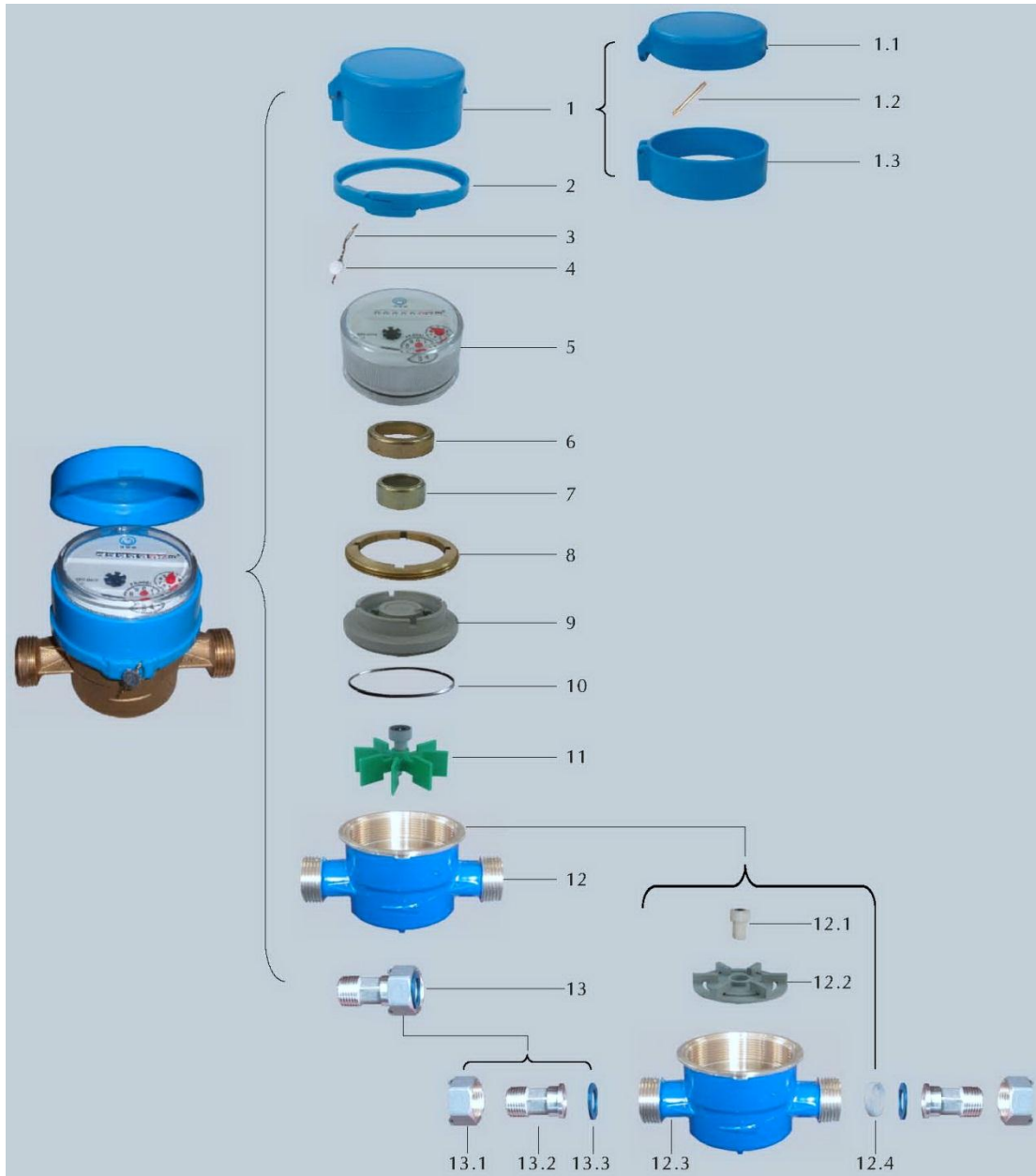
NWM - Ningbo Water Meter Co., Ltd.
 Add: No. 99, Beihai Road Ningbo 315032 China
 Tel/Fax: +86 574 87331095/87376630
 Website: www.chinawatermeter.com
 E-mail: sales@nwmwatermeters.com



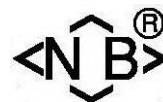
WATER METERS

SJ-SDC PLUS

Exploded Drawing:



NWM - Ningbo Water Meter Co., Ltd.
Add: No. 99, Beihai Road Ningbo 315033 China
Tel/Fax: +86 574 87376630/87376630
Website: www.chinawatermeter.com
E-mail: wzhnbwm@vip.163.com





DECLARATIE DE CONFORMITATE Nr.124/2023

Noi ,NINGBO WATER METER Group CO.LTD ., cu sediul în adresă : NO.355HONGXING ROAD , JEANGBEI DISTRICT NINGBO 315033 CHINA

Declarăm că produsul „CONTOR DE APA „tip PD-LFC ,SG-LFC, MJ-LFC, WP-SDC SJ-SDC PLUS

Nr.	Denumire	Serie Produs
1	Contor volumetric apa rece PD-LFC	
2	Contor apa rece cadran umed SJ-LFC	
3	Contor apa rece multiget MJ-LFC	
4	Contor apa rece tip WOLTMAN WP-SDC	
5	Contor apa rece și caldă tip SJ-SDC PLUS cu MODUL LoRA	

Este conform cu certificatul de examinare CE de tip numărul TCM 142/10 – 4759 , TCM 142/11 – 4855, TCM 142/10 – 4793, TCM 142/10 – 4736 și TCM 142/12 -4922 sunt respectate cerințele esențiale specificate de Directiva 2014/32/EU a parlamentului și al Consiliului European privind mijloacele de măsurare , transpuse în Legislația Națională a R . Moldova Definite în

Anexa N1 Cerințe

Anexa MI-001 Contor apa

Normative armonizate :

SR EN 14154-1+A2:2011- Contoare de apă. Partea 1 : Condiții Generale

SR EN 14154-2+A2:2011- Contoare de apă. Partea 2 : Instalarea și condiții de utilizare

SR EN 14154-3+A2:2011- Contoare de apă. Partea 3 : Condiții Generale Metode și echipamente de încercare

Evaluarea conformității produsului este realizată prin :

- Examinare EC de tip (modul B), organism notificat 1383, care a emis certificatul TCM 142/10 – 4759 , TCM 142/11 – 4855, TCM 142/10 – 4793, TCM 142/10 – 4736 , **TCM 142/12 -4922**
- Asigurarea sistemului calității (modul D), organism notificat 1383, care a emis certificatul revizia 4

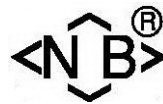
Prezenta declarație de conformitate este emisă pe răspunderea exclusivă a **producătorului**

Locul și data emiterii :

NINGBO, 26-01-2023

Name , Function

Signature



WARRANTY CERTIFICATE

PRODUCT:WATER METER SERIES:
 MANUFACTURER: NINGBO WATER METER CO LTD, Address: NO.355 HONGXING ROAD< JIANGEBI DISTRICT NINGBO 315033 CHINA
 IMPORT: I.I Marcel Suvac Or. Orhei Str. 31 August 67 B1
 SELLER (name and address):
 BUYER(name and address):.....
 DOCUMENT OF SALES:Nr...../.....
 NO.DOCUMENT DELCLARATION OF CONFORMITY: 3502/2014
 AVERAGE DURATION OF USE: 10 years

How to ensure that servicing: repair or replacement

Our warranty is the buyer by the seller in accordance with the current valid law in R.Moldova , harmonized with Eu legislation: Law 449/ 12.11.2003 and Ordinance no.21 /08.21.1992, republished as amended and supplemented, specifying ways to esnure as follows : The warranty is granted by repaired under warranty, if the instalation and maintenace of products is performed by authorizes personnel,so due installation and maintenance,the product does not sufer damage that would affect reliable operation,or cause his removal from service;

1. Replacement warranty cover any failure of material or manufacturing defect that would occur during the warranty period.
2. The warranty period is 24 moths starting from the date of delivery of the product,and extending - is the period that elapses from the date of complaint until the fault removal or replacement of the product.
3. Damage resulting from transport storage,installation,meintenance or use of incorrect or inconsistent use of non original parts,mistakes or changes made by the installer and /or buyer ,not covered by the warranty.
4. Rectofaction uncurrred in replacing goods or substandard prodcuts within the warranty period that are not attributable to the consumer is made withing 15 calendar days of when the economic operator is aware of such shortcomings.In some hidden defects the maximum set(15 days) run from the date of completion of technical expertise codcted by a neutral technical body.
5. To purchase the product has to verify the completion guarantee cerificate with all the necessary date, signed and stamped by the seller; also can request data on the mode of transport, storage, installation,use and maintenance,correctly the product,in addition to those specified in the techinal.
6. In case of failures whose repair is over warranty period on request,the supplying company runs needed repairs for a fee.
7. To enjoy the rights secured by collateral,the buyer is obliged to sibmit seller:this warranty and the original pruchase document,as well as detailed presentation of the fault detected.
8. By signing this certificate,the buyer agrees to those contained in this act and delcares that took the product in good condition,understood its obligations in order to benefit from the guarantee provided by the seller,as required by law.
9. Consumer rights conferred by law are not affected by the guarantee(commercial,contractual) offered by the trader.

Terms relating to the activities of service rendered on the product.

MANUFACTURER'S SIGNATURE AND STAMP NWM Signature NWM	SIGNATURE AND STAMP OF THE IMPORTER	SELLER'S SIGNATURE AND STAMP	BUYER'S SIGNATURE
---	--	-------------------------------------	--------------------------



EU declaration of conformity Nr.124/2023

We NINGBO WATER METER GROUP CO. LTD Headquartered in

Address:NO.355 HONGXING ROAD,JIANGBEI DISTRICT NINGBO 315033 CHINA

Declare that the product ``water meter`` type SJ-SDC SDC-MJ, MJ-WDC SJ-SDC PLUS

Nr.	Denumire	Serie Produs
1	Cold volumetric water metr PD-LFC	
2	Cold water water meter wet dial SJ-LFC	
3	Cold water multijet water meter MJ-LFC DN	
4	Cold water water metter WOLTMAN WP-SDC	
5	Cold an Hot water meter tip SJ-SDC PLUS and MODULE LoRA	

Compiles with EC type examination certificate number TCM 142/ 11-4857, TCM 142/ 10-4792 TCM 142/ 10-4793 and TCM 142/12 -4922 is in compliance with the essential requirements of directive 2014/32 EU of the European Parliament and of the Council DIRECTIVE 2014/32/EU OF THE EUROPEAN PARLIAMENT AND OF THE COUNCIL, of 26 February 2014

on the harmonization of the laws of the Member States relating to the marking available on the market of measuring instruments(recast), which has been transposed into Romania national legislation by GD no. 711/2015. as defined in:

Annex I, Essential requirements

Annex M1-001 water meter

Harmonized regulations:

SR EN 14154-1 + A2: 2011 – Water meters. Part 1: General

SR EN 14154-2 + A2:2011 – Water meters.Part2:Installation and conditions of use

SR EN 14154-3+ A2:2011 – Water meters.Part3:Methods and test equipment.

Assessment of the product is achieved by:

-EC type examination(module B),Notified Body 1383,with issued the certificates TCM 142/ 11-4857, TCM 142/10-4792,TCM 142/10-4793 , TCM 142/12 -4922

-Ensuring the quality system(module B)Notified Body 1383, which issued 0119-SJ-A004-10,revision 4

This declaration of conformity is under the sole responsibility of the manufacturer .

Place and date of issue

NINGBO, 26-01-2022

Name , surname function (Name Function)

Signature

9 RECLAMAȚII

Reclamație la exploatarea contorului în termen de garanție se primesc la reprezentanța oficială al NIGBO WATER METER GROUP CO.LTD

Orice reclamație în perioada de garanție va fi însoțit de prezentul certificat
Intervenție în perioada de garanție

Nr.ord	Data predării	Defecțiuni Constante Piese înlocuite	Semnătură client	Semnătura Ing. responsabil	semnătură client
1					
2					

Certificatul CE Nr _____ din „____” _____

Data procurării „____” _____ 202_

L.Ș

Contor de apă tip cămin apartament SJ-SDC PLUS R-160 (clasa C DN) 15-25

Nr. _____

Montat de _____

Data montării „____” _____ 200

Licența pentru montare Nr _____

Data eliberării și valabilitatea _____

Semnătura și ștampila a responsabilului tehnic pentru îndeplinirea lucrărilor

L.Ș



PAȘAPORT CLASA B SJ-SDC PLUS

CERTIFICAT DE CALITATE ȘI GARANȚIE

IMPORTATOR : oficial în R .Moldova _

PODUCĂTOR: NINGBO WATER METER GROUP CO.LTD producător de contoare de apă din 1962

CE MID certificat TCM 142/12 -4922 Valabil pînă în 8 aprilie 2032

DOMENIUL DE UTILIZARE

- ▶ Contoarele de apă sunt aparate de măsurare destinate a fi utilizate în domeniul de evidență comercială în interes public a consumului de apă rece .
- ▶ Contorul de apă rece se utilizează la măsurarea volumului de apă având temperatura cuprinsă între +14 și +40°C pentru apa caldă +19si +90 și presiunea ≤1,6Mpa(16bar.)

2. PRINCIPALELE CARACTERISTICI TEHNICI

Clasa metrologică R Q3/Q1	R-160		
Diametrul nominal .mm	Dn15	Dn20	Dn25
Debit de suprasarcină(Q4)m3/h	3,125	5	7,875
Debit permanent (Q3),m3/h	2,5	4	6,6,3
Debit tranzitoriu (Q2) l/h	25	40	63
Debit minim (Qmin) l/h	15,625	25	39,375
Indicația maximă ,m3	99999.9999		
Valoarea diviziunii minime ,m3	0,02		
Poziția de instalare	H (Horizontala) V (Verticala)		
Debit de pornire l/h	≤5	≤5	
Presiunea de lucru	16 bar		
Temperatura Max. T	T30 or T50		

Contoarele De apă SJ-SD PLUS sunt certificate CE și sunt respectate cerințele esențiale specificate de Directiva 2014/32/EU a parlamentului și Consiliului European privind mijloacele de măsurare , Transpuse în Legislația Națională a R.Moldova

3. SET DE LIVRARE

3.1 Contor de apă clasa R 160	- 1buc
3.2 Pașaport	-1buc
3.3 Piuliță olandeză	-2buc (La cerere)
3.4 Satelit	-2buc (La Cerere)
3.5 Garnituri	-2buc (La Cerere)
3.6 Declarație de Conformitate CE	-1buc

4. PUNEREA ÎN FUNCȚIUNE

4.1 Pentru instalare se admit contoarele care au aplicat sigiliu ,sau marca metrologică de verificare ale organismului Național de Metrologie și Supraveghere Tehnică și sunt însoțite cu buletin de verificare metrologică conform normelor legale în vigoare .

4.2 CONDIȚII DE INSTALARE

Se montează în încăperi și cămine de distribuire a apei cu temperatura mediului

Ambiant ►+1 +40°C

- Până la instalarea contorului ,pe conductă trebuie să se assemblează părțile componente din setul de livrare din punctul 3 se poziționează garniturile între contor și sateliți care se îmbină cu piulițele .
- Porțiunea de racordare a conductei trebuie să fie curățită de rugină nisip și alte particule până la instalarea contorului dacă este nevoie tronsonul de racordare se spală cu un get de apă
- Contorul se montează în diferite poziții conf. fig. 1cu reținerea clasei de precizie C cu condiția ca să asigure accesul ușor la contor pentru citire întreținere ,înlocuire și pentru eventual demontare .
- Contorul trebuie să fie protejat de riscuri de deteriorare prin șocuri sau prin vibrații transmise asupra lui de instalații învecinate .
- Racordările contorului cu conducta cît și conducta de apă trebuie să fie ermetice și să reziste la presiunea de lucru 1Mpa.
- În amonte trebuie să fie montat un robinet de închidere și filtru

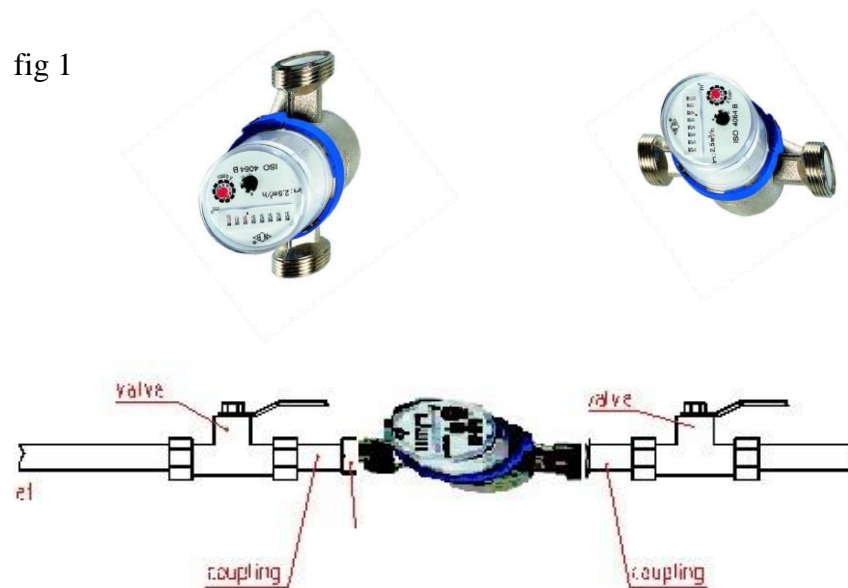
NU NECESITĂ CLAPETĂ UNISENS ESTE ÎNCORPORATĂ ÎN CONTOR

5. INSTRUCȚIUNI PENTRU EXPLOATARE

Contoarele asigură buna funcționare în cazul respectării următoarelor condiții:

- Instalarea contorului este efectuată conform punctului 4
- Contorul se utilizează pentru măsurarea volumului de apă în domeniului debitelor indicate pe placa indicatoare ale contorului
- Durata de viață a contorului dat constituie circa 10 ani de zile cu condiția respectării cerințelor descrise în acest document

fig 1



6 VERIFICARE ȘI SIGILARE

- 6.1 verificarea periodică și după reparații se petrece de verificatorul de stat în laboratoarele autorizate metrologic de Organul Național de Metrologie .
- 6.2 În conformitate cu prevederile legale contoarele nu se permite de a fi livrate fără buletin de verificare metrologică .Atestarea valabilității metrologice se confirmă prin aplicarea mărcii metrologice pe cadranul contorului (dacă nu este posibilă sigilare) sau pe pastila de plumb.
- 6.3 Perioada verificării metrologice
- | | |
|--------------------------------|---------|
| Pentru contorul multiget de | 60 luni |
| Pentru contor de apartament de | 60luni |

7 CONDIȚII DE GARANȚIE

- 7.1 Uzina NINGBO WATER METER CO.LTD confirmă corespunderea contorului de apă SJ-SD PLUS cu normele CE și sunt respectate cerințele esențiale specificate de Directiva 2014/32/EU a parlamentului și Consiliului European privind mijloacele de măsurare , Transpuse în Legislația Națională a R.Moldova En 14154:2005+A1+A2, OIML R49: 2006(E), ISO 4064: 2005(E)
- 7.2 Termenul de garanție constituie 24 luni de la livrare .
- 7.3 Ne respectarea instrucțiunilor de montare ,exploatare și întreținere duce la pierderea garanției și dreptul de reclamație de către cumpărător în cadrul perioadei de garanție aferente de producător .
- Cheltuielile de garanție și înlocuire de piese la apariția unor vicii de fabrică apărute in cadrul perioadei de garanție sunt suportate de către firma
- ATENȚIE** :Nu beneficiază de garanție contoarele care sunt supuse defecțiunilor mecanice ,fizici provocate de diferit factori (deteriorării în urma unei intervenții ,naturale îngheț e.t.c)



EU-TYPE EXAMINATION CERTIFICATE

Number: TCM 142/12 - 4922

Addition 3

This addition replaces all previous versions of this certificate in full wording.

Page 1 from 10 pages

In accordance: with Directive 2014/32/EU of the European Parliament and of the Council on the harmonisation of the laws of the Member States relating to the making available on the market of measuring instruments (implemented in Czech Republic by Government Order No. 120/2016 Coll.).

Manufacturer: Ningbo Water Meter (Group) Co., Ltd.
355 Hongxing Road, Jiangbei District
Ningbo 315032
China

For: water meter – single jet
Type: SJ-SDC PLUS

Accuracy class: 2
Temperature class: T30, T50, T30/90, T90

Valid until: 8 April 2032

Document No: 0115-CS-A007-12

Description: Essential characteristics, approved conditions and special conditions, if any, are described in this certificate.

Date of issue: 5 April 2022

Certificate approved by:




Ing. František Staněk, PhD.

1 Measuring device description

The single jet water meters type SJ-SDC PLUS are designed to measure, memorise and display the volume at metering conditions of water passing through the measurement transducer in the sense of the Directive of the European Parliament and of the Council no. 2014/32/EU of measuring instruments, as amended.

The water meters type SJ-SDC PLUS are single jet rotary vane wheel water meters with dry mechanical indicating device realised by plastic can or stainless steel can (T30, T50 temperature classes only) calculator.

The water meters type SJ-SDC PLUS variant D2 consist of a brass body or plastic body (for DN 15 with temperature class T30, T50 only) with connecting threads and inlet strainer, a regulating plate, a bush for impeller with agate bearing, a rotary vane impeller with magnetic ring and stainless steel shaft, a rubber O-ring, a pressure plate with agate bearing, a brass inner screw ring, a plastic gasket (optional), two antimagnetic protection rings, a dry mechanical indicating device, a plastic cover with a closing ring or a plastic clamp on cover.

The water meters type SJ-SDC PLUS variant D4 consist of a brass body or plastic body (for DN 15 with temperature class T30, T50 only) with connecting threads and inlet strainer, an adjusting screw, a regulating plate, a bush for impeller with agate bearing, a rotary vane impeller with magnetic ring and stainless steel shaft, a plastic gasket, a rubber O-ring, a pressure plate with agate bearing, a brass inner screw ring, two antimagnetic protection rings, a dry mechanical indicating device and a plastic cover with a closing ring.

There are three variants for composition of the mechanical indicating device: variant with 5 numbered rollers and 4 rotary pointers, variant with 8 numbered rollers and 1 rotary pointer and variant with 7 numbered rollers and 2 rotary pointers. There is a star wheel with 6 arms on the indicating device which can be used for rapid testing. There are two variants for reading of the numbered rollers: variant with top reading and variant with inclined reading.

The water meters type SJ-SDC PLUS can be installed in any position for $Q_3/Q_1=50$ and in horizontal position with the indicating device on top for larger values of Q_3/Q_1 as stated in the table with basic technical data.

The water meters type SJ-SDC PLUS can be equipped with a reed impulse transmitter which can be used for remote reading. The water meter has not been tested with the reed impulse transmitter and it is not a part of the certification. The meters can be equipped with parts for mounting of an AMR device.

Water meters type SJ-SDC PLUS are manufactured according to technical documentation of manufacturer No. Q/ZNJ 17005-2012.8 Annex 1 from 31.08.2012. This documentation contains besides others the assembly drawings No. ZN1.630.591~591g, 592~592c, 591y~591gy, 592y~592cy from 7/2009, No. ZN1.630.590~590c, 590y~590cy, 523~523k, 523y~523ky, 524~524c, 524y~524cy from 6/2009, No. ZN1.636.206 – 221, 660~663, 654-657, 715, 716 from 8/2012 and ZN1.630.214, 215, 654-657 from 8/2012.

2 Basic technical data

Nominal diameter (DN) [mm]:	15	20	25	
Overload flowrate (Q_4) (m ³ /h)	3.13	5.00	7.88	
Permanent flowrate (Q_3) (m ³ /h)	2.50	4.00	6.30	
Transitional flowrate (Q_2) (m ³ /h)	$Q_3 / Q_1 = 200$ $Q_3 / Q_1 = 160$ $Q_3 / Q_1 = 125$ $Q_3 / Q_1 = 100$ $Q_3 / Q_1 = 50$	0.0200 0.0250 0.0320 0.0400 0.0800	0.0320 0.0400 0.0512 0.0640 0.1280	0.0504 0.0630 0.0806 0.1008 0.2016
Minimum flowrate (Q_1) (m ³ /h)	$Q_3 / Q_1 = 200$ $Q_3 / Q_1 = 160$ $Q_3 / Q_1 = 125$ $Q_3 / Q_1 = 100$ $Q_3 / Q_1 = 50$	0.0125 0.0156 0.0200 0.0250 0.0500	0.0200 0.0250 0.0320 0.0400 0.0800	0.0315 0.0394 0.0504 0.0630 0.1260
Ratio Q_3 / Q_1 for horizontal position with indicating device on top:	200, 160, 125, 100, 50			
Ratio Q_3 / Q_1 for any position:	50			
Ratio Q_2 / Q_1 :	1.6			
Ratio Q_4 / Q_3 :	1.25			
Accuracy class:	2			
Maximum permissible error for the lower flowrate zone (MPE ₁):	± 5 %			

Maximum permissible error for the upper flowrate zone (MPE _u):	± 2 % for water having a temperature ≤ 30 °C ± 3 % for water having a temperature > 30 °C		
Temperature class:	T30, T50, T30/90 and T90		
Water pressure classes:	MAP 16		
Pressure-loss classes:	ΔP 63		
Indicating range [m ³]:	99 999		
Resolution of the indicating device [m ³]:	0.00005 or 0.00002		
Resolution of the device for the rapid testing [pulse/L]:	62.0000	40.5000	22.2353
Flow profile sensitivity classes:	U0 D0		
Orientation limitation:	any position for Q ₃ /Q ₁ =50, horizontal position with indicating device on top for Q ₃ /Q ₁ =50, 100, 125, 160, 200		
Length L [mm]:	80 to 170	130	160
Connection type– Screw thread size:	G ³ / ₄ B, G1B	G1B	G1 ¹ / ₂ B, G1 ¹ / ₂ B
Reed switch power supply (U _{max} / I _{max}):	max. 24 V / 0.01 A		
Reed switch K-factor [impulse / L]:	0.001, 0.01, 0.1 and 1		

Nominal diameter (DN) [mm]:	32		40
Overload flowrate (Q ₄) (m ³ /h)	12.5		20
Permanent flowrate (Q ₃) (m ³ /h)	10		16
Transitional flowrate (Q ₂) (m ³ /h)	Q ₃ / Q ₁ = 200	0.0800	0.1280
	Q ₃ / Q ₁ = 160	0.1000	0.1600
	Q ₃ / Q ₁ = 125	0.1280	0.2048
	Q ₃ / Q ₁ = 100	0.1600	0.2560
	Q ₃ / Q ₁ = 50	0.3200	0.5120
Minimum flowrate (Q ₁) (m ³ /h)	Q ₃ / Q ₁ = 200	0.0500	0.0800
	Q ₃ / Q ₁ = 160	0.0625	0.1000
	Q ₃ / Q ₁ = 125	0.0800	0.1280
	Q ₃ / Q ₁ = 100	0.1000	0.1600
	Q ₃ / Q ₁ = 50	0.2000	0.3200
Ratio Q ₃ / Q ₁ for horizontal position with indicating device on top:	200, 160, 125, 100, 50		
Ratio Q ₃ / Q ₁ for any position:	50		
Ratio Q ₂ / Q ₁ :	1.6		
Ratio Q ₄ / Q ₃ :	1.25		
Accuracy class:	2		
Maximum permissible error for the lower flowrate zone (MPE _l):	± 5 %		
Maximum permissible error for the upper flowrate zone (MPE _u):	± 2 % for water having a temperature ≤ 30 °C ± 3 % for water having a temperature > 30 °C		
Temperature class:	T30, T50, T30/T90 and T90		
Water pressure classes:	MAP 16		
Pressure-loss classes:	ΔP 63		
Indicating range [m ³]:	99 999		
Resolution of the indicating device [m ³]:	0.00005 or 0.00002		
Resolution of the device for the rapid testing [pulse/L]:	12.15	9.4714	
Flow profile sensitivity classes:	U0 D0		
Orientation limitation:	any position for Q ₃ /Q ₁ =50, horizontal position with indicating device on top for Q ₃ /Q ₁ =50, 100, 125, 160, 200		
Length L [mm]:	160	190-200	
Connection type– Screw thread size:	G1 ¹ / ₂ B, G1 ³ / ₄ B	G2B	
Reed switch power supply (U _{max} / I _{max}):	max. 24 V / 0.01 A		
Reed switch K-factor [impulse / L]:	0.001, 0.01, 0.1 and 1		

3 Tests

Technical tests of the water meters type SJ-SDC PLUS performed according to the standards OIML R 49 Edition 2006 (E) and EN 14154:2005+A1:2007, EN 14154:2005+A2:2011 are recorded in Test Reports No. 6015-PT-P0004-12, 6015-PT-P0056-14 and 6015-PT-P0038-17. Technical tests of the water meters type SJ-SDC PLUS performed according to the standards OIML R 49 Edition 2013 (E) and EN ISO 4064:2017 (E) are recorded in Test Reports No. 6015-PT-P0044-18 and 6015-PT-P0006-22.

4 The measuring device data

The water meters type SJ-SDC PLUS shall be clearly and indelibly marked with the following information:

- The “CE” marking and supplementary metrology marking
- Number of EU-type examination certificate
- Manufacturer’s name or trademark
- Postal address at which the manufacturer can be contacted
- Year of manufacture (last two digits) and serial number (as near as possible to the indicating device)
- Measuring device type
- Unit of measurement (m^3)
- Accuracy class 2
- Numerical value of Q_3 in m^3/h ($Q_3 \times \times$)
- The ratio Q_3 / Q_1 ($R \times \times$) with respect to the orientation of the meter
- The temperature class ($T \times \times$)
- The maximum admissible pressure ($MAP \times \times$)
- The pressure loss class ($\Delta P \times \times$)
- Classes on sensitivity to irregularities in velocity field ($U \times D \times$)
- Orientation limitation marks: H↑ (horizontal position with the indicating device on top) or “any” (any position)
- Direction of flow arrow on both sides of the meter body

There are additional data required if the water meter is equipped with impulse transmitter:

- Output signals for ancillary devices (type / levels)
- External power supply requirements (voltage – frequency)

5 Sealing

For the SJ-SDC PLUS meters with the closing ring the junction of the closing ring has to be sealed by a wire with a lead or plastic seal or secured by self-destructive sticker.

For the SJ-SDC PLUS meters with plastic clamp on cover the clamp on cover has to be marked by safeguarding marks.

For the SJ-SDC PLUS meters with outer adjusting screw (the D4 variant) the adjusting screw has to be sealed by a wire with a lead or plastic seal connecting the adjusting screw with the closing ring junction or with the meter body. Optionally the meters can be equipped with a safety pin between the dial window and the dial plate to indicate a rough treatment of the meter.

The connection of water meter calculator and reed impulse transmitter has to be sealed, if equipped.

The location of seal is described in Figures 1 - 3. The use of safety pin can be seen in Figure 4.

Figure 1: Example of the water meter type SJ-SDC PLUS variant D2, DN15 – view and sealing:



Figure 2: Example of the water meter type SJ-SDC PLUS variant D2, DN25 – view and sealing:



Figure 3: Example of the water meter type SJ-SDC PLUS variant D4, DN15 – view and sealing:



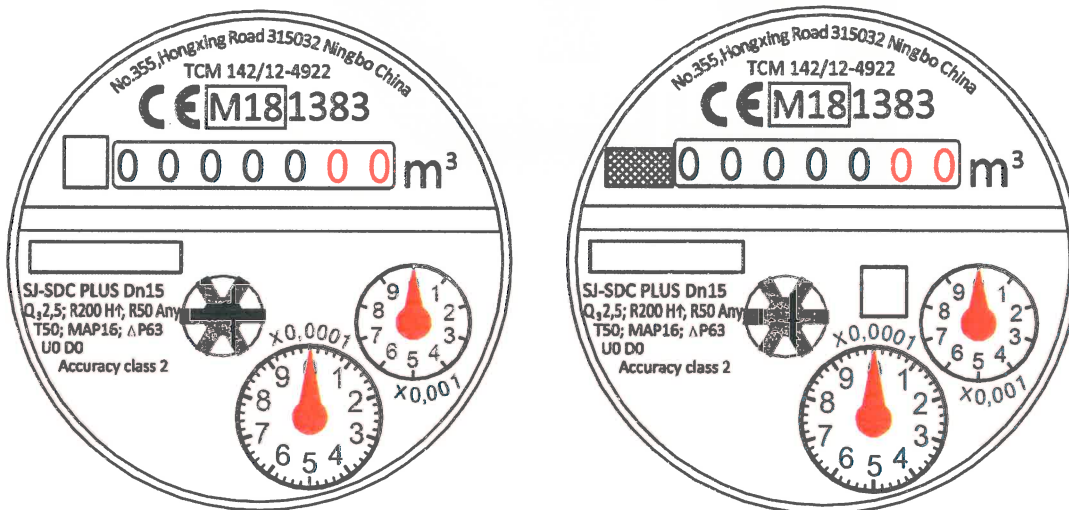
Figure 4: Example of the water meter type SJ-SDC PLUS variant D4, DN15 prepared for AMR mounting and equipped with safety pin:

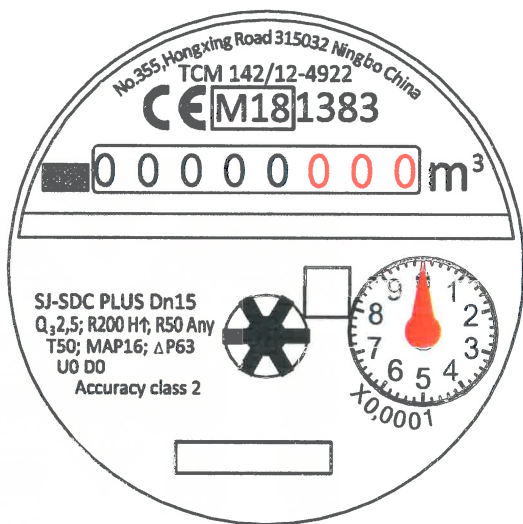
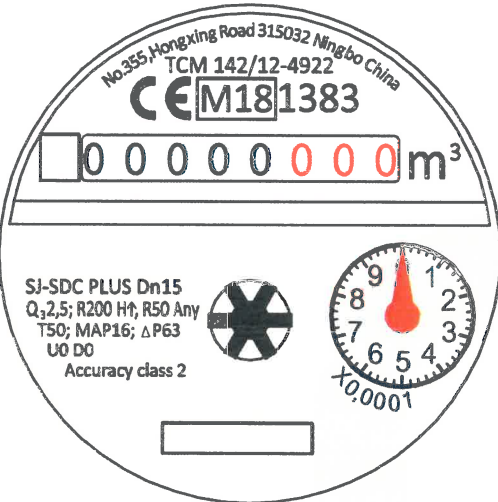
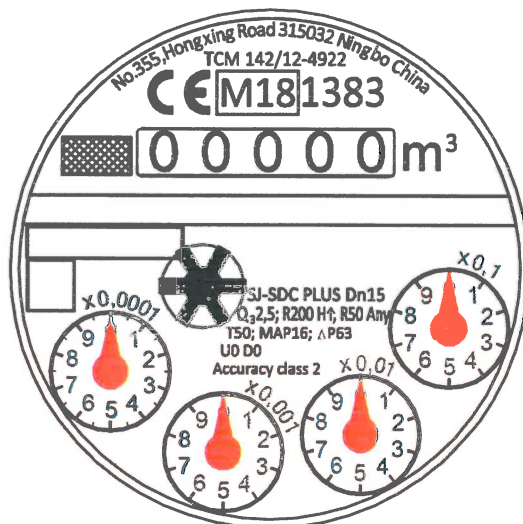
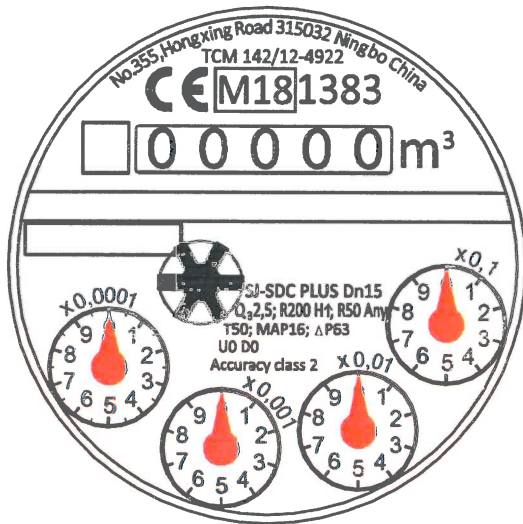


Figure 5: Example of the water meter type SJ-SDC PLUS variant D4, DN15 with plastic body



Figure 6: Example of dial plates of the water meter type SJ-SDC PLUS with 7+2, 5+4 and 8+1 registers. Variants with magnetic pointer for reed impulse transmitter or inductive pointer for AMR reading are also possible.





Manufacturer's logo or name



Customer's logo or name



Serial number

Figure 7: Examples of dial plates of the water meter type SJ-SDC PLUS with inclined reading. Variants with magnetic pointer for reed impulse transmitter or inductive pointer for AMR reading are also possible.

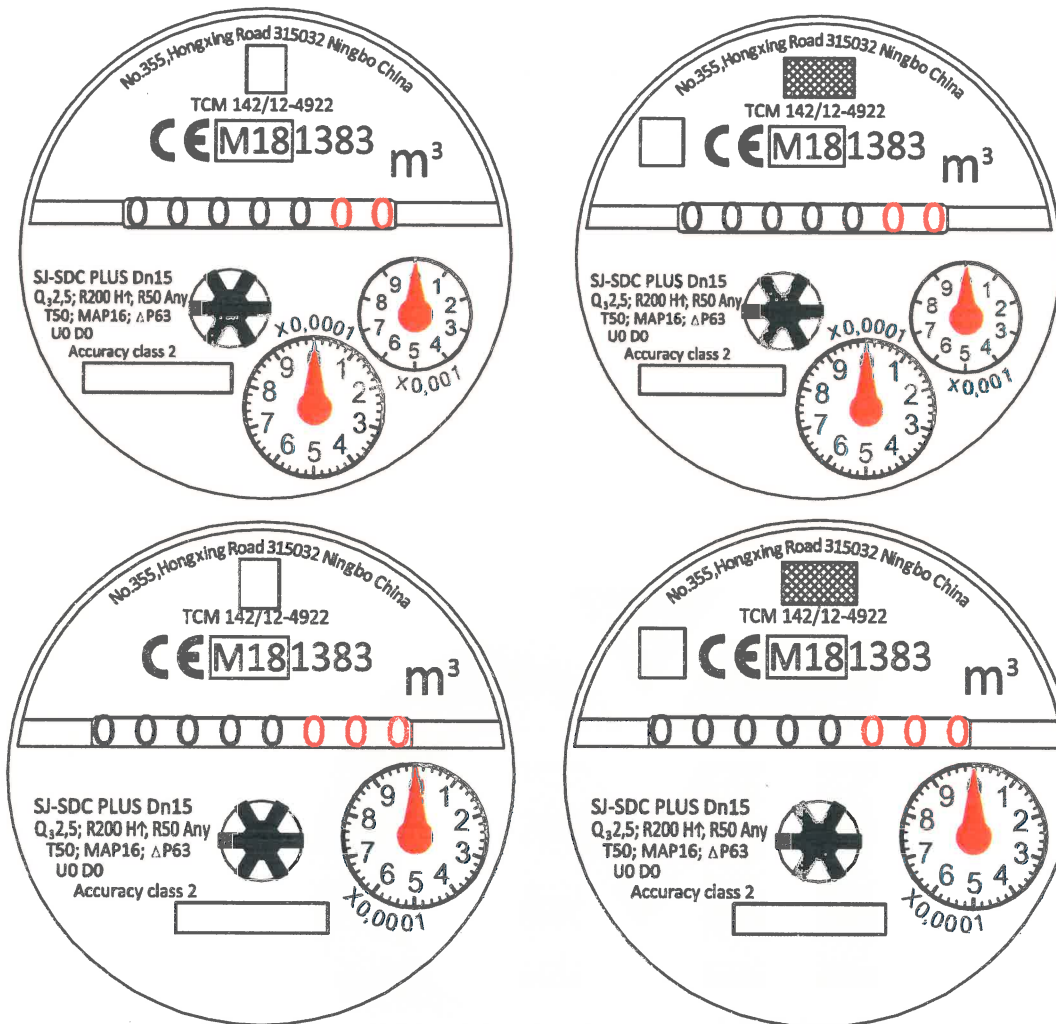


Figure 8: Examples of dial plates of the water meter type SJ-SDC PLUS – another variant with flat dial plate and inductive pointer (variant with magnetic pointer is also possible).

