

# PRODUCT DESCRIPTION

## MEDULLARY PLUGS

DATE: 12.08.2016

AUTHOR: J. HÖPPNER

REV. 0

## MEDULLARY PLUGS

### DESIGN DESCRIPTION

The medullary plug, that splints the diaphyseal medullary cavity just below the supposed tip of the prosthesis, is used to seal the medullary cavity before the bone cement is applied. This prevents the cement sliding too far distally within the medullary cavity and makes for an intramedullary pressure being built-up whilst the cement is being introduced. This improves cement penetration into the adjacent bony bed.

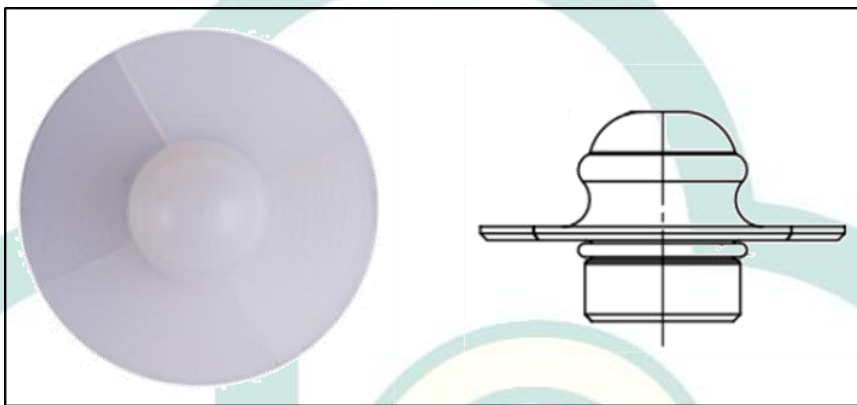


FIG. 1: MEDULLARY PLUG

---

### MATERIALS

The medullary plug is made of standard UHMWPE meeting the specifications of ISO 5834-2. The medullary plugs have an x-ray marker wire made of TiAl<sub>6</sub>V<sub>4</sub> alloy according to ISO 5832-3 and can be used with all cemented stems of MUTARS system.

---

### COATINGS / SURFACES

The medullary plugs provide a surface roughness Ra pf 1.6 µm.

---

## SIZES AND DIMENSIONS

The medullary plug is provided two (2) diameters, 24 mm (size small) and 27 mm (size large).

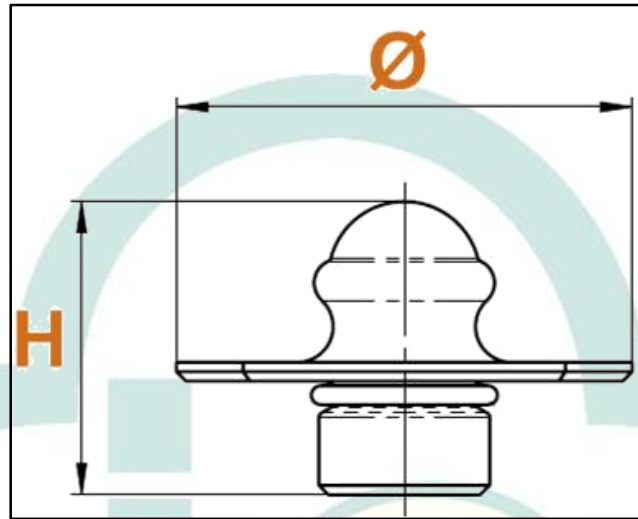


FIG. 2: MEDULLARY PLUG - DIMENSIONS

DIMENSION	SIZE	
	SMALL	LARGE
$\varnothing$	24 mm	27 mm
H	15.5 mm	