



DIALYSIS

Medica's product range for low body weight patients includes a total of four dialyser models, amongst those, two sizes are high flux and two low flux. All have been developed to obtain the lowest priming volume and provide the best patient care.

LOW FLUX DIALYSER **BPA FREE**

	SmartFlux LFP-O6	SmartFlux LFP-O3
Area m ²	0,60	0,30
Inner diameter μ	200	200
Wall thickness μ	35	35
Priming volume ml	37	20
KUF ml/h/mmHg	7.5±20%	3.8±20%
MAX TMP	600 mmHg	600 mmHg
MAX blood flow rate	300 ml/min	150 ml/min
Hollow Fiber Material	PUREMA[®] LX	PUREMA[®] LX
	(Polyethersulfone)	
Sterilisation method	Irradiation	
Product code	M03689	M03986

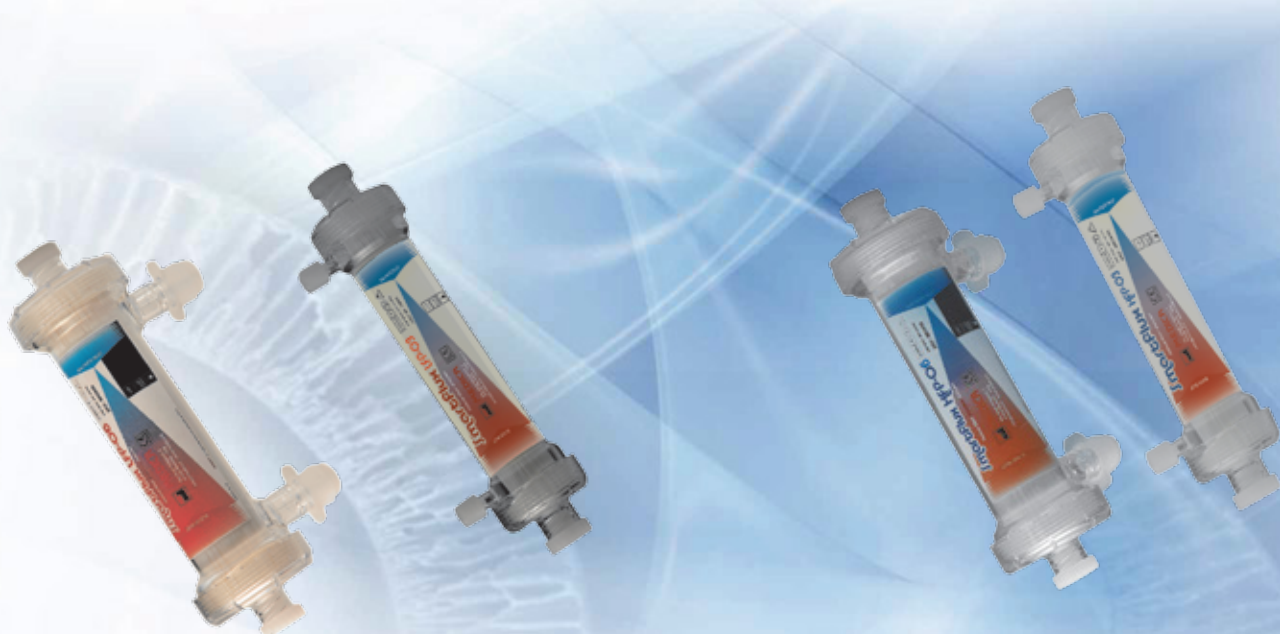
	CLEARANCE	CLEARANCE
	Qb=200 ml/min; Qd=500 ml/min; Qf=0 ml/min; ±5%	Qb=100 ml/min; Qd=300 ml/min; Qf=0 ml/min; ±10%
Urea (ml/min)	151	75
Creatinine (ml/min)	122	60
Phosphate (ml/min)	78	42
Vitamine B ₁₂ (ml/min)	30	19

HIGH FLUX DIALYSER **BPA FREE**

	SmartFlux HFP-O6	SmartFlux HFP-O3
Area m ²	0,60	0,30
Inner diameter μ	200	200
Wall thickness μ	30	30
Priming volume ml	39	21
KUF ml/h/mmHg	30±20%	14±20%
MAX TMP	600 mmHg	600 mmHg
MAX blood flow rate	300 ml/min	150 ml/min
Hollow Fiber Material	PUREMA[®] H	PUREMA[®] H
	(Polyethersulfone)	
Sterilisation method	Irradiation	
Product code	M03690	M03987

	CLEARANCE	CLEARANCE
	Qb=200 ml/min; Qd=500 ml/min; Qf=0 ml/min; ±5%	Qb=100 ml/min; Qd=300 ml/min; Qf=0 ml/min; ±10%
Urea (ml/min)	168	84
Creatinine (ml/min)	143	73
Phosphate (ml/min)	134	62
Vitamine B ₁₂ (ml/min)	86	39

PUREMA[®] is a registered trademark of Membrana GmbH



PLASMA EXCHANGE

To complete its current adult product range MEDICA has developed three new small size plasmafilters based on **Versatile[™]-PES** membrane.

BPA FREE

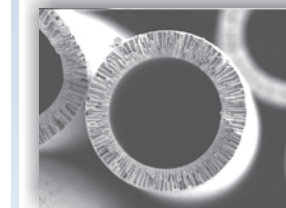
PLASMART 50-100-200

	50	100	200
Area m ²	0,05	0,1	0,2
Inner diameter μ	300	300	300
Wall thickness μ	85	85	85
Priming blood volume ml	3,9	8,6	13,2
Max TMP (mmHg)	100	100	100
Max blood flow (ml/min)	20	40	60
Plasma flow (ml/min)	10 to 20% of blood flow		
Cartridge blood connectors	Male Luer Lock	Twist lock	
Cartridge filtrate/dialysate connectors	Female luer lock		
Hollow Fiber Material	Versatile[™]-PES		
Sterilisation method	Irradiation		
Product code (Irradiation)	M03857	M03858	M03859
Sterilisation method	EtO		
Product Code (EtO)	M03863	M03864	M03865



C.R.R.T. and CARDIOSURGERY

Thanks to its innovative fiber spinning know-how, MEDICA currently offers **MediSulfone[®] HF**:



A high flux polysulfone with excellent biocompatibility characteristics, dedicated to blood filtration treatment like hemofiltration and hemoconcentration.

BPA FREE

HEMOFILTERS D050-D100-D150

MediSulfone[®] hemofilters have been developed to ensure the best C.R.R.T. Output.

	D050	D100	D150
Area m ²	0,075	0,15	0,25
Inner diameter μ	250	250	250
Wall thickness μ	50	50	50
Priming volume ml	5	10	19
Max TMP (mmHg)	600		
Cartridge blood connectors	MLL	Tube site	Twist lock
Cartridge filtrate and dialysate connectors	FLL	Tube site	FLL
KUF ml/h/mmHg	1,3	3,0	5,5
Hollow Fiber Material	MediSulfone[®]		
	Polysulfone 50,000 Daltons		
Product code (Irradiation)	M03798	M03984	M03137
Product code (EtO)	M03698	M03739	M03069

BPA FREE

HEMOCONCENTRATORS D025 -D050-D100-D150

The MEDICA "no-rinse" low priming volume hemoconcentrators can be easily inserted in the extracorporeal circuit at any time.

	D025	D050	D100	D150
Area m ²	0,023	0,075	0,15	0,25
Inner diameter μ	250			
Wall thickness μ	50			
Priming volume ml	2,5	5	10	19
Max TMP (mmHg)	600			
Cartridge blood conn.	FLL	MLL	Tube site	Twist lock
Cartridge filtrate and dialysate connectors	FLL	FLL	Tube site	FLL
KUF ml/h/mmHg	0,48	1,3	3,0	5,5
Hollow Fiber Material	MediSulfone[®]			
	Polysulfone 50,000 Daltons			
Sterilisation method	Irradiation			
Product code	M03956	M03662	M03985	M03098

MEDICA



SmartFlux PUREMA® DIALYZERS

M27321 REV 05 CDP051118B

SmartFlux

PUREMA® DIALYZERS

MADE IN ITALY



SmartFlux

HFP 130 150 170 190 210 230
HIGH FLUX PUREMA® DIALYZERS

SmartFlux

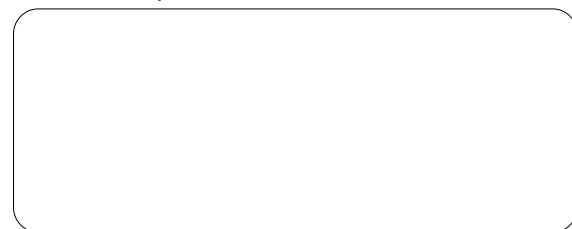
LFP 120 140 160 180 200 220
LOW FLUX PUREMA® DIALYZERS

NEW

SmartFlux

HFP 270
**2,7m² HIGH FLUX
PUREMA® DIALYZER
FOR HIGH VOLUME
HEMODIAFILTRATION**

Distributed by



MANUFACTURER
MEDICA

MEDICA S.p.A.
Via degli Artigiani, 7
41036, Medolla (Modena)
Italia

Phone +39 0535 51159
Fax + 39 0535 52605
info@medica.it
www.medica.it

CE 0476 UNI EN ISO 9001:2015
UNI CEI EN ISO 13485:2016

SMART CHOICE
experience by your side

Gruppo
MEDICA
Group

TECHNICAL SPECIFICATIONS & PERFORMANCES

SmartFlux HFP eliminates middle molecular weight toxins without loss of usefull proteins.

SmartFlux HFP is available in 7 different surface areas, tailored to meet patients needs.



MODEL	SmartFlux HFP-130	SmartFlux HFP-150	SmartFlux HFP-170	SmartFlux HFP-190	SmartFlux HFP-210	SmartFlux HFP-230	SmartFlux HFP-270
Surface (m ²)	1.3	1.5	1.7	1.9	2.1	2.3	2.7
Priming Volume (ml)	75	89	101	113	123	133	156
Kuf (ml/h/mmHg)	58	63	69	75	81	87	124
Urea	194	196	197	197	198	198	199
Creatinine	185	190	193	195	196	196	197
Phosphate	178	183	185	187	189	191	193
B12 Vitamine	144	149	153	156	159	161	163
Clearance (Qb= 200 ml/min; Qd= 500 ml/min; Quf= 0)							
Urea	262	273	279	283	286	290	295
Creatinine	242	250	259	269	272	276	283
Phosphate	223	234	242	250	254	258	264
B12 Vitamine	165	176	185	195	201	205	210
Clearance (Qb= 300 ml/min; Qd= 500 ml/min; Quf= 0)							
Urea	309	321	331	339	344	348	351
Creatinine	273	285	299	310	320	327	331
Phosphate	250	262	275	283	286	291	300
B12 Vitamine	180	192	200	209	217	224	231
Clearance (Qb= 400 ml/min; Qd= 500 ml/min; Quf= 0)							
Membrane	PUREMA®						
Potting Material	Polyurethane						
Housing and Caps Material	Polycarbonate						
Sterilisation	Beta Rays						
Wall Thickness (µm)	30	30	30	30	30	30	30
Max TMP (mmHg)	600	600	600	600	600	600	600
Internal Diameter (µm)	200	200	200	200	200	200	200

HOW TO ORDER							
Product Code	M90098	M03538	M90032	M03539	M90033	M03540	M90081

PUREMA® is a registered trademark of Membrana GmbH
 > In vitro performances according to ISO 8637:2010

Technical features are subject to change without prior notice at the discretion of Medica SpA
 This document does not have contractual value

TECHNICAL SPECIFICATIONS & PERFORMANCES

SmartFlux LFP offers enhanced clearance of small molecular uraemic toxins with outstanding stable clearance performance.

SmartFlux LFP is available in 6 different surface areas, tailored to meet patients needs.



MODEL	SmartFlux LFP-120	SmartFlux LFP-140	SmartFlux LFP-160	SmartFlux LFP-180	SmartFlux LFP-200	SmartFlux LFP-220
Surface (m ²)	1.2	1.4	1.6	1.8	2.0	2.2
Priming Volume (ml)	72	82	94	106	116	127
Kuf (ml/h/mmHg)	16	18	20	23	26	29
Urea	187	190	193	195	197	198
Creatinine	178	181	184	186	190	192
Phosphate	155	161	165	170	175	180
B12 Vitamine	103	107	110	114	120	126
Clearance (Qb= 200 ml/min; Qd= 500 ml/min; Quf= 0)						
Urea	238	253	259	265	270	273
Creatinine	214	227	238	247	252	259
Phosphate	184	197	206	214	224	235
B12 Vitamine	112	117	125	131	140	145
Clearance (Qb= 300 ml/min; Qd= 500 ml/min; Quf= 0)						
Urea	283	293	301	308	319	329
Creatinine	251	263	272	286	297	304
Phosphate	199	210	222	235	252	274
B12 Vitamine	120	126	134	141	151	159
Clearance (Qb= 400 ml/min; Qd= 500 ml/min; Quf= 0)						
Membrane	PUREMA®					
Potting Material	Polyurethane					
Housing and Caps Material	Polycarbonate					
Sterilisation	Beta Rays					
Wall Thickness (µm)	35	35	35	35	35	35
Max TMP (mmHg)	600	600	600	600	600	600
Internal Diameter (µm)	200	200	200	200	200	200

HOW TO ORDER						
Product Code	M90097	M03534	M90030	M03535	M90031	M03536

PUREMA® is a registered trademark of Membrana GmbH
 > In vitro performances according to ISO 8637:2010

Technical features are subject to change without prior notice at the discretion of Medica SpA
 This document does not have contractual value