



浙江苍南仪表集团股份有限公司

CINIM

ZHEJIANG CANGNAN INSTRUMENT GROUP CO., LTD.

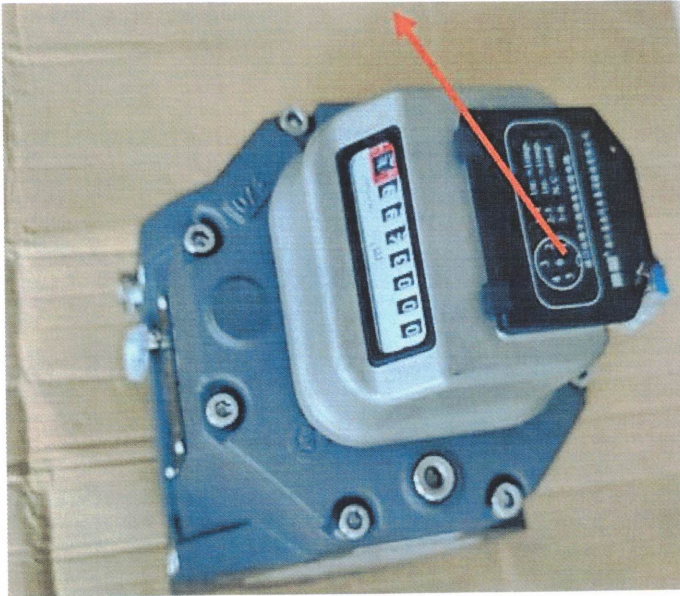
地址(Add): 中国浙江省苍南县灵溪镇海峡大道 345 号 NO.345 STRAIT AVENUE, LINGXI TOWN, CANGNAN COUNTY, ZHEJIANG PROVINCE, CHINA

邮编(Zip): 325800 电话(Tel): 0086-577-64839376 传真(Fax): 0086-577-64839982 Website: <http://www.zjcnby.com> E-mail: cnbyc@zicnyb.com

Schematic Diagram for Dismantling RM-80-G100

1. Remove the lead seal from the mechanical counter shown in the diagram, then take off the mechanical counter.

The red line in the diagram indicates the mechanical counter.



2. Use a special tool to remove the locking screws shown in the diagram, then take off the end cover assembly.

In the diagram, the parts on the left side of the red line are the locking screws, and the parts on the right side are the end cover assembly.

同安路

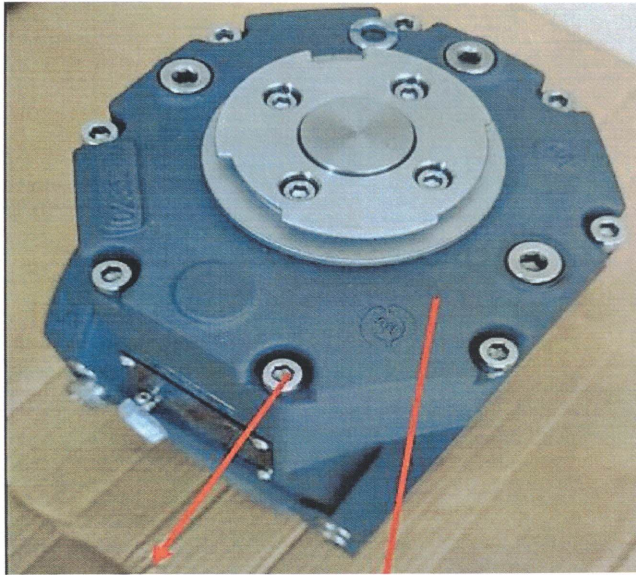


浙江苍南仪表集团股份有限公司

ZHEJIANG CANGNAN INSTRUMENT GROUP CO., LTD.

地址(Add): 中国浙江省苍南县灵溪镇海峡大道 345 号 NO.345 STRAIT AVENUE, LINGXI TOWN, CANGNAN COUNTY, ZHEJIANG PROVINCE, CHINA

邮编(Zip): 325800 电话(Tel): 0086-577-64839376 传真(Fax): 0086-577-64839982 Website: <http://www.zjcnby.com> E-mail: cnbyc@zicnyb.com



3. Remove the magnetic coupling in the first diagram, then adjust the dimensions of the two components—the signal-generating gear assembly and the final-stage gear assembly—as shown in the second diagram; after this, linear adjustment can be performed.

A	B	C	D	E	F
Z1	32	33	34	35	29
Z2	59	61	63	65	54
I	1.843750	1.848485	1.852941	1.857143	1.862069
justeerwaarde	0.496%	0.241%	0%	-0.227%	-0.493%

周学强



浙江苍南仪表集团股份有限公司

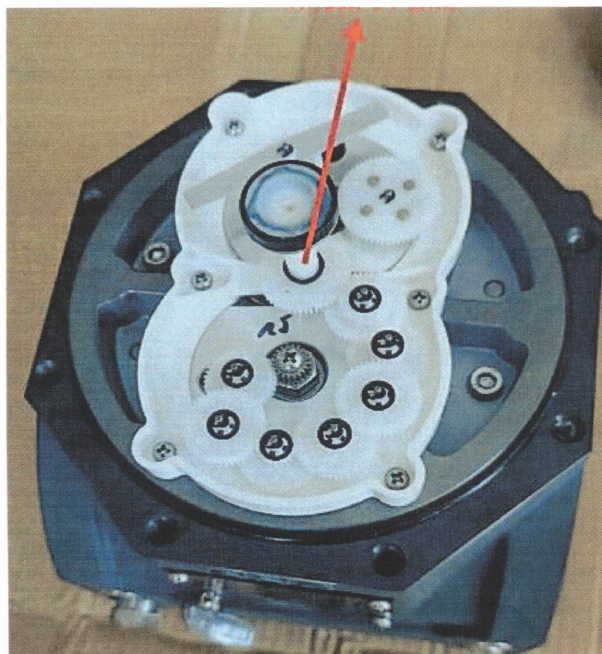
CNIM

ZHEJIANG CANGNAN INSTRUMENT GROUP CO., LTD.

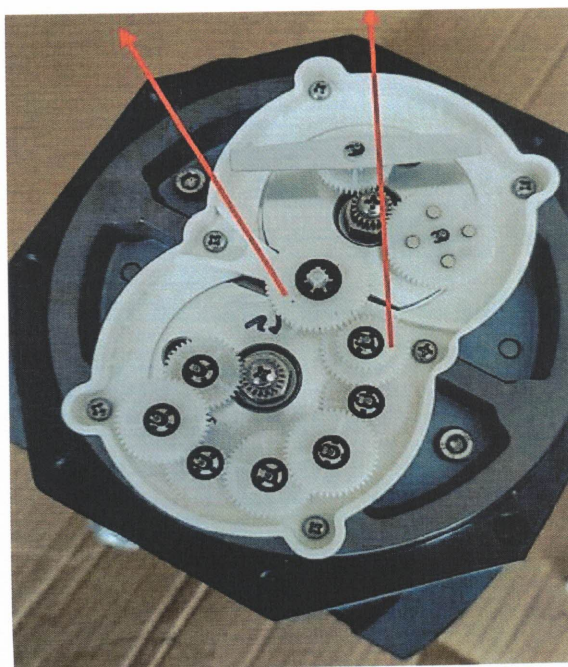
地址(Add): 中国浙江省苍南县灵溪镇海峡大道 345 号 NO.345 STRAIT AVENUE, LINGXI TOWN, CANGNAN COUNTY, ZHEJIANG PROVINCE, CHINA

邮编(Zip): 325800 电话(Tel): 0086-577-64839376 传真(Fax): 0086-577-64839982 Website: <http://www.zjcnby.com> E-mail: cnybc@zicnyb.com

The red line in the first diagram indicates the mechanical counter.



In the second diagram, the red line on the left indicates the signal-generating gear assembly, and the red line on the right indicates the final-stage gear assembly.



周子强