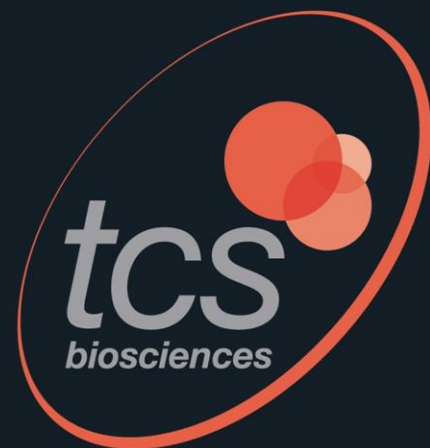
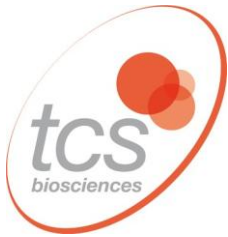


accuracy and quality as a science



Selectrol®  
Technical  
Guide



**Selectrol®** : Manufactured under licence from Public Health England Culture Collections

## SELECTROL® - FREEZE-DRIED ORGANISMS IN A DISC

**Quality control of microbial characterisation tests, culture media and antimicrobial susceptibility determinations is best accomplished using microorganisms with well-documented and stable phenotypic and genotypic characteristics.**

Bacterial and fungal strains have been selected and recommended by expert bodies, such as the International Organisation for Standardisation (ISO), EUCAST, CLSI and the European Pharmacopoeia, on the basis of their suitability for monitoring test performance and ensuring the validity of results for testing used in clinical, food, pharmaceutical, water and veterinary laboratories.

Products derived from the cultures in the collections should be manufactured using the minimum number of sub-cultures, to minimise the possibility of alterations to the phenotype due to mutations. See also page 14.

Selectrol strains are manufactured exclusively from Public Health England Culture Collections (NCTC® and NCPF®) and are first generation subcultures, unlike many products on the market which are 2<sup>nd</sup>, 3<sup>rd</sup> or 4<sup>th</sup> generation subcultures. They are preserved during long-term storage as freeze-dried cells in order to minimise any alterations to the phenotype caused by mutations.

### Passages

A Selectrol® disc provides a first generation subculture that originates from a **master culture** sourced from Public Health England Culture Collections. The growth from the Selectrol® disc provides a **working stock** for laboratory testing. It is generally accepted that no more than a total of five passages should be made from the **master culture**, in order to avoid genetic drift and mutant selection. Therefore, no more than four passages (fresh cultures) from the **working stock** should be made.

### Shelf life

For most strains, Selectrol® discs are guaranteed to contain at least 10<sup>6</sup> organisms at the time of purchase; this number is sufficient to ensure that when the discs are used and stored as directed there will be viable organisms cultivable until the stated end of the shelf life, which is usually 9 months from the time the vial is first opened.

### Quality Control

Selectrol® batches are tested in our UKAS accredited testing laboratory number 2496. A test report for each batch of Selectrol® can be accessed via our website. The reporting of Selectrol® test results via the website comes under our UKAS accreditation.

Selectrol® cultures are rigorously tested to confirm identity, to confirm the possession of essential phenotypic characteristics and to exclude contamination with other organisms. Photographic evidence of the test results is retained for each batch, along with retained appropriately stored samples.

### References to ATCC® in this Technical Guide

Selectrol® is a first generation derivative of original stock cultures obtained exclusively from the National Collection of Type Cultures (NCTC®) or National Collection of Pathogenic Fungi (NCPF®). Where appropriate other international strain designations, such as the ATCC®, are listed for reference purposes only.

Issue 7 01/2021



## Glossary

**AMRHAI:** Antimicrobial Resistance and Healthcare Associated Infections reference unit

**ATCC®:** American Type Culture Collection. ATCC® strains are listed for reference only. ATCC® is a registered trademark of the American Type Culture Collection.

**BSAC:** British Society for Antimicrobial Chemotherapy - Now superseded by EUCAST

**CPE:** Carbapenemase Producing Enterobacteriaceae

**CRE:** Carbapenem Resistant Enterobacteriaceae

**Culture collection:** Cultures of fully characterised organisms maintained in such a way as to minimise sub-culturing. See page 14.

**ESBL:** Extended Spectrum Beta-Lactamase-producing organism.

**EUCAST:** European Committee on Antimicrobial Susceptibility Testing (ref. Version 8.0).

**First generation derivative:** A single passage from a master culture, for example a Selectrol® disc.

**ISO:** International Organisation for Standardisation.

**Master culture:** Culture derived from a reference culture vial.

**NCPF®:** National Collection of Pathogenic Fungi. NCPF® is a registered trademark of Public Health England.

**NCTC®:** National Collection of Type Cultures. NCTC® is a registered trademark of Public Health England.

**Passage:** An equivalent term for a subculture.

**PHE:** Public Health England.

**Reference cultures:** Quality control strains selected on the basis of their phenotypic biochemical and antimicrobial susceptibility characteristics to be used as controls in microbiological testing. These are obtained as freeze-dried vials from culture collections.

**Working stock:** Culture derived from a Selectrol® disc, which can be stored for up to a week, usually on agar slants.

**Working culture:** A sub-culture of the working stock to provide 18-24 hour growth for use in testing.

**WDCM:** World Data Centre for Microorganisms. Further details of applications for WDCM strains are available on their WDCM Reference Strain Catalogue website at: <http://refs.wdcm.org/home.htm>

**WFCC:** World Federation for Culture Collections

## Photographs

Many of the photographs included in this document are reproduced by kind permission of PHE Culture Collections and are taken from the poster entitled:

Validation of NCTC reference strains recommended by EUCAST as controls in the UK SMI Testing Procedures  
H. McGregor, D. Pindoria, T. Chisnall, I. Ezeajughi, R. Siddiqui, S. Alexander  
Public Health England, Colindale, UK.

## SIGNIFICANT PROPERTIES AND USES OF SELECTROL® ORGANISMS

### ***Aspergillus brasiliensis*** (formerly *Aspergillus niger*):

MM94 – NCPF® 2275 / ATCC® 16404 / WDCM 00053 – Used in pharmaceutical industry for testing media and preservatives. ISO 11133 recommended for media testing. Colonies are initially white or yellowish and on the reverse greyish or greenish-yellow. Sporing heads on the colony surface are initially pale, becoming dark brown to black. Sporulation may be inhibited in sealed plates.

### ***Bacillus cereus***:

MM21 – NCTC® 10320 / ATCC® 9634 / 11778 / 19637 / WDCM 00001 (Recently renamed *Bacillus toyonensis*) – ISO 11133 recommended for enumeration of *Bacillus* species in human and animal food, and for media QC.

MM86 – NCTC® 7464 / ATCC® 10876 – PHE recommended media and ID test control organism.



### ***Bacillus subtilis*** (*Bacillus subtilis* subsp. *spizizenii*):

MM29 – NCTC® 10400 / ATCC® 6633 / WDCM 00003 – Used in antibiotic assays (fully sensitive), PHE recommended media and ID test control organism. ISO 11133 recommended for media testing, for enumeration of *Bacillus* species in human and animal food, sterility testing and disinfectant testing.

### ***Bacteroides fragilis***:

MM44 – NCTC® 9343 / ATCC® 25285 – Type strain, PHE recommended strain for media and sensitivity test control.

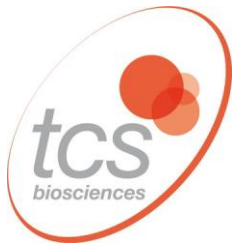
### ***Burkholderia cepacia***:

MM70 – NCTC® 10661 / ATCC® 17759 – PHE recommended strain for media control.

### ***Campylobacter jejuni*** (*Campylobacter jejuni* subsp. *jejuni*):

MM36 – NCTC® 11351 / ATCC® 33560 – EUCAST recommended strain for susceptibility testing.

MM82 – NCTC® 11322 / ATCC® 29428 / WDCM 00156 – PHE recommended strain for media quality control. ISO 11133 recommended for media testing.



***Candida albicans:***

MM28 – NCPF<sup>®</sup> 3255 / ATCC<sup>®</sup> 2091 / WDCM 00055 – Sensitivity control, industrial use, disinfectant testing.

MM42 – NCPF<sup>®</sup> 3179 / ATCC<sup>®</sup> 10231 / WDCM 00054 – Pharmaceutical, media testing, sterility testing, disinfectant testing. PHE recommended strain for media control. ISO 11133 recommended for media testing.

*Candida* species other than *Candida albicans* are isolated from >50% cases of candidaemia, a condition with high mortality, mainly affecting immunocompromised patients. These species are often more resistant to commonly used antifungals, such as azoles and echinocandins, so accurate identification of *Candida* species isolated from blood cultures is advised to aid prognosis and guide antifungal testing and prescribing.

***Candida glabrata:***

MM69 NCPF<sup>®</sup> 3309 / ATCC<sup>®</sup> 2001

***Candida guilliermondii:***

MM71 - NCPF<sup>®</sup> 3099 / ATCC<sup>®</sup> 5276

***Candida krusei / Issatchenkia orientalis:***

MM53 – NCPF<sup>®</sup> 3953 / ATCC<sup>®</sup> 6258 – Type strain. Used in azole antifungal assays, and susceptibility testing.

***Candida lusitanae:***

MM72 - NCPF<sup>®</sup> 3954

***Candida parapsilosis:***

MM54 – NCPF<sup>®</sup> 8334 / ATCC<sup>®</sup> 22019 – Type strain. Used in azole antifungal assays, and susceptibility testing.

***Candida tropicalis:***

MM61 - NCPF<sup>®</sup> 3463 - further details to follow

***Citrobacter freundii***

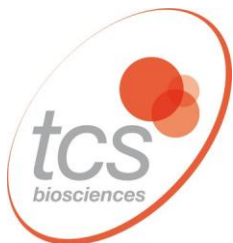
MM27 – NCTC<sup>®</sup> 9750 / ATCC<sup>®</sup> 8090 – Type strain.

***Clostridium perfringens:***

MM45 – NCTC<sup>®</sup> 8237 / ATCC<sup>®</sup> 13124 / WDCM 00007 – Type strain. PHE recommended strain for food testing (Tryptose Sulphite Cycloserine agar – lactose and gelatin positive) and sensitivity test control. ISO 11133 recommended for media testing in food, animal feed, and water applications.

*Clostridium perfringens* is listed in Schedule 5 of the Anti-terrorism, Crime and Security Act 2001, and should be securely stored in accordance with the guidelines of the Act. However, MM45 is a type A strain, which does not produce the lethal epsilon toxin of potential interest to bioterrorists.





#### ***Clostridium sporogenes:***

MM31 – NCTC<sup>®</sup> 532 / ATCC<sup>®</sup> 19404 / WDCM 00008 – Used for media control and sterility testing. PHE recommended strain for media QC (lactose gelatin medium for ID of *C. perfringens* lactose negative and gelatin positive).

#### **CRE ≡ 'Carbapenem Resistant Enterobacteriaceae' / CPE ≡ 'Carbapenemase Producing Enterobacteriaceae'**

There are 5 carbapenemases which are currently a significant problem in the UK – KPC, OXA-48, IMP, NDM and VIM – and PHE recommend that all clinically-significant Gram-negative bacteria should be routinely screened for carbapenemase production, using a recommended carbapenem<sup>2</sup> such as ertapenem or meropenem. Resistant isolates may be investigated further to determine which resistance mechanism is involved using the Modified Hodge Test, MALDI-TOF, PCR or a reference laboratory.

MM55 *Klebsiella pneumoniae* – NCTC<sup>®</sup> 13440 – Produces a Class B VIM-1 Carbapenemase.

MM56 *Klebsiella pneumoniae* – NCTC<sup>®</sup> 13443 – Produces a Class B NDM-1 Carbapenemase.

MM58 *Klebsiella pneumoniae* – NCTC<sup>®</sup> 13438 – Produces a Class A KPC-3 Carbapenemase.

MM59 *Klebsiella pneumoniae* – NCTC<sup>®</sup> 13442 – Produces a Class D OXA-48 Carbapenemase.

MM57 *Escherichia coli* – NCTC<sup>®</sup> 13476 – Produces a Class B IMP Carbapenemase.

MM33 *Escherichia coli* – NCTC<sup>®</sup> 10418 / ATCC<sup>®</sup> 10536 – Recommended by PHE as a negative control for CRE testing.

#### ***Enterobacter aerogenes:***

MM26 – NCTC<sup>®</sup> 10006 / ATCC<sup>®</sup> 13048 / WDCM 00175 – Type strain; used in water, paint and adhesive testing. ISO 11133 recommend for food, animal feed and water testing and media QC.

#### ***Enterobacter cloacae:***

MM01 – NCTC<sup>®</sup> 13380 / ATCC<sup>®</sup> 23355 / WDCM 00082 – Disinfectant control, QC of selective media for detection of enteric pathogens.

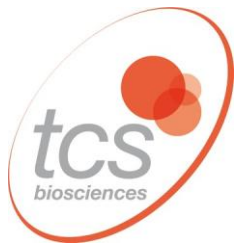
MM51 – NCTC<sup>®</sup> 13406 – PHE recommended strain for QC of AmpC (de-repressed) detection.

#### ***Enterococcus faecalis* strains:**

MM17 – NCTC<sup>®</sup> 775 / ATCC<sup>®</sup> 19433 / WDCM 00009 – Used for water, meat, milk and milk products testing. PHE recommended strain for media control. ISO 11133 recommended for media testing. Fully sensitive. Lancefield group D.

MM18 – NCTC<sup>®</sup> 12697 / ATCC<sup>®</sup> 29212 / WDCM 00087 – Is fully sensitive to vancomycin and gentamicin. PHE recommended positive control strain for aesculin test. EUCAST recommended media control for sulpha / trimethoprim testing and general susceptibility testing control. Lancefield group D. ISO 11133 recommended for media testing. QC of Enterococcosel agar (with or without vancomycin).

MM52 – NCTC<sup>®</sup> 13379 / ATCC<sup>®</sup> 51299 / WDCM 00085 – EUCAST recommended for vancomycin resistance testing (low-level Van B mediated) and also shows high-level resistance to aminoglycosides. It is used to confirm methodologies used to detect these resistances are working correctly. Lancefield group D. QC of Enterococcosel agar (with or without vancomycin).



***Enterococcus hirae:***

MM35 – NCTC® 13383 / ATCC® 10541 / WDCM 00011 – Disinfectant control. Used in microbiological assays. Colonies are alpha-haemolytic on sheep blood agar.

***Escherichia coli* strains:**

MM02 – NCTC® 12241 / ATCC® 25922 / WDCM 00013 – EUCAST, PHE recommended control strain for susceptibility testing (fully sensitive). Food, animal feed, milk / milk products, meat and water testing. ISO 11133 recommended for media testing. Exhibits 2 colony types.

MM24 – NCTC® 11954 / ATCC® 35218 – EUCAST recommended beta-lactamase positive strain (TEM-1 beta-lactamase producer [non-ESBL]). Sensitive to amoxicillin / clavulanic acid.

MM38 – NCTC® 12923 / ATCC® 8739 / WDCM 00012 – Used in pharmaceutical / water industry. ISO 11133 recommended for food, milk and water media QC. There are three colony types.

MM63 – NCTC® 11560 – Beta-lactamase positive strain.

MM75 – NCTC® 9001 / ATCC® 11775 / WDCM 00090 / WDCM 00155 – Used in water / chemical industry. PHE recommended strain for media QC. ISO 11133 recommended for enteric pathogen selective media testing.

MM93 – NCTC® 12900 / ATCC® 700728 / WDCM 00014 – O157 strain (non-toxigenic). PHE recommended strain for media QC. ISO 11133 recommended for media testing.

***Escherichia coli* CRE and mcr-1 strains:**

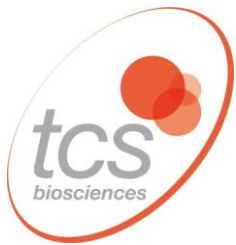
MM33 – NCTC® 10418 / ATCC® 10536 – (PHE recommended alternative to NCTC 12241) fully sensitive control strain. PHE recommended positive control for indole test, ONPG test, negative control for oxidase test, PHE recommended negative control for CRE and ESBL testing.

MM34 – NCTC® 13846 – Possesses the plasmid-mediated mcr-1 colistin resistance mechanism gene and is recommended by PHE and EUCAST as a control for tests to detect this increasingly prevalent resistance, always in conjunction with NCTC® 12241 / ATCC® 25922 (Selectrol strain MM02) as a negative control.

**N.B.** Broth microdilution using colistin sulphate is the only validated method for the determination of colistin MICs. Testing with antibiotic discs or antibiotic gradient impregnated strips is not recommended as very major errors may occur due to limited diffusion of colistin into the agar medium.

MM57 – NCTC® 13476 – CRE testing control; produces a Class B IMP Carbapenemase





***Haemophilus influenzae* strains:**

MM37 – NCTC<sup>®</sup> 12975 / ATCC<sup>®</sup> 49766 – Recommended by EUCAST.

MM81 – NCTC<sup>®</sup> 12699 / ATCC<sup>®</sup> 49247 – Is a 'BLNAR' strain – (beta-lactamase non-producing ampicillin / amoxycillin resistant). These strains are important clinically because the susceptibility results obtained using conventional testing procedures may be misleading in the case of cephalosporins. EUCAST, PHE recommended QC strain for susceptibility testing media.

MM98 – NCTC<sup>®</sup> 11931 – A fully sensitive strain. PHE recommended strain for porphyrin synthesis test, chocolate agar control.

MM100 – NCTC<sup>®</sup> 8468 / ATCC<sup>®</sup> 9334 / CCUG 23946 – A fully sensitive strain, which reportedly gives results which are easier to interpret when Mueller-Hinton medium is used in preference to Iso-Sensitest medium. MIC for amoxycillin is 0.5 mg/l.

***Klebsiella pneumoniae* strains:**

MM04 – NCTC<sup>®</sup> 9633 / ATCC<sup>®</sup> 13883 / WDCM 00097 – Type strain. Two colony types may be seen. The predominant type is entire and opaque. The secondary type is slightly smaller and translucent. Used for QC of LMX broth.

MM83 – NCTC<sup>®</sup> 13368 / ATCC<sup>®</sup> 700603 – EUCAST recommended ESBL-producing strain used as control for ESBL testing. There are two colony types.

MM55 – NCTC<sup>®</sup> 13440 – CRE testing control; produces a Class B VIM-1 Carbapenemase.

MM56 – NCTC<sup>®</sup> 13443 – CRE testing control; produces a Class B NDM-1 Carbapenemase.

MM58 – NCTC<sup>®</sup> 13438 – CRE testing control; produces a Class A KPC-3 Carbapenemase.

MM59 – NCTC<sup>®</sup> 13442 – CRE testing control; produces a Class D OXA-48 Carbapenemase.

***Klebsiella aerogenes*:**

MM88 (renamed *Raoultella planticola*) – NCTC<sup>®</sup> 9528 – Used in water / pharmaceutical industry. PHE recommended negative control for Tryptone Bile X-Glucuronide agar and Yeast Extract agar.

***Lactobacillus brevis*:**

MM76 – NCTC<sup>®</sup> 13386 / ATCC<sup>®</sup> 8287 – Used in the food industry.

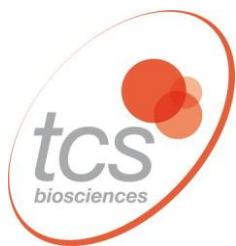
***Legionella pneumophila* serogroup 1:**

MM08 – NCTC<sup>®</sup> 11192 / ATCC<sup>®</sup> 33152 / WDCM 00107 – ISO 11133 recommended for Legionella selective media testing. Derived from strain isolated from first recognised outbreak of Legionellosis in Philadelphia at the Legionnaires' Convention 1976

***Legionella anisa*:**

MM99 – NCTC<sup>®</sup> 11974 / ATCC<sup>®</sup> 35292 / WDCM 00106 – ISO 11133 recommended for Legionella selective media testing





***Listeria innocua:***

MM92 – NCTC® 11288 / ATCC® 33090 / WDCM 00017 – Type strain. Non-pathogenic. Food, animal feed, milk and milk products testing. ISO 11133 recommended for media testing.

***Listeria ivanovii:***

MM66-10 - NCTC® 11007 / ATCC® 19119 / WDCM 00018 – further details to follow

***Listeria monocytogenes strains:***

MM47 – NCTC® 10527 / ATCC® 13932 / WDCM 00021 – ISO 11133 recommended for QC of media for food, animal feed, milk and milk products. Antigenic serotype 4b. Non-haemolytic and non-motile strain. Phenotypically identifies as *Listeria innocua*. Two phenotypes may be observed.

MM48 – NCTC® 7973 / ATCC® 35152 / WDCM 00109 – ISO 11133 recommended for *Listeria* selective media testing. Produces 2 phenotypes, one is beta-haemolytic and virulent, the other non-haemolytic and non-virulent. Serovar 1/2a.

MM77 – NCTC® 13372 / ATCC® 7644 – Used in food microbiology Q.C. Colonies exhibit beta-haemolysis on sheep blood agar.

MM87 – NCTC® 11994 / WDCM 00019 – Type strain, PHE recommended positive control strain for *Listeria* detection in food, animal feed, milk and milk products. Serotype 4b, most common serovar isolated from human infections.

***Mycobacterium smegmatis:***

MM67 - NCTC® 8159 / ATCC® 19420 – further details to follow

***Neisseria gonorrhoeae strains:***

MM05 – NCTC® 8375 / ATCC® 19424 – Is fully sensitive – MIC of penicillin is 0.06 mg/l. PHE recommended strain for media QC.

MM96 – NCTC® 12700 / ATCC® 49226 – PHE recommended control for susceptibility testing – methodology assesses the ability of testing to detect resistance rather than sensitivity; this strain has low-level, but clinically relevant, resistance to penicillin – MIC of penicillin is 0.5 mg/l. Some variation in size and texture of colonies may be observed. Increased CO<sub>2</sub> is helpful in growth.

***Proteus mirabilis:***

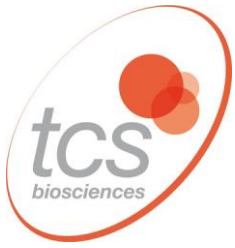
MM22 – NCTC® 11938 / WDCM 00023 – ISO 11133 recommended for food, animal feed testing, and QC of selective media for enteric pathogens.

MM43 – NCTC® 13376 / ATCC® 14153 – Pharmaceutical / disinfectant / media control.

MM68 – NCTC® 10975 – Media control. PHE recommended control for motility test.

***Proteus vulgaris:***

MM09 – NCTC® 4175 / ATCC® 13315 – Was the type strain, but is atypical and has been recognised as a separate species – *Proteus hauseri* – it is used for media control. Colonies are glistening with spreading edges.



#### ***Pseudomonas aeruginosa* strains:**

MM10 – NCTC® 12903 / ATCC® 27853 / WDCM 00025 – Is fully sensitive to anti-pseudomonal antibiotics (EUCAST susceptibility test control). ISO 11133 recommended for media QC in food, animal feed, milk, milk products, and water applications. 2 colony types may be observed. Produces both fluorescein and pyocyanin pigments.

MM40 – NCTC® 12924 / ATCC® 9027 / WDCM 00026 – Used in water industry / disinfectant testing / sterility testing. ISO 11133 recommended for media testing. Colonies on agar plates are entire, glistening and mucoid with a grainy surface. This strain also produces both fluorescein and pyocyanin pigments.

MM41 – NCTC® 13359 / ATCC® 15442 – Used in water industry / disinfectant testing. May produce up to 3 different colony types. Pyocyanin is not produced.

MM65 – NCTC® 10662 / ATCC® 25668 / WDCM 00114 – Is fully sensitive to antipseudomonal antimicrobials. PHE recommended control strain for enteric pathogen detection media.



#### ***Rhodococcus equi*:**

MM97 – NCTC® 1621 / ATCC® 6939 / WDCM 00028 – Type strain. Used for QC of media for food, animal feed, milk and milk products.

#### ***Saccharomyces cerevisiae*:**

MM50 — NCTC® 10716 / WDCM 00058 – ISO 11133 recommended for QC of food, animal feed, milk and milk products. Also used for antifungal susceptibility testing and disinfectant testing.

MM73 – NCPF® 3178 – PHE recommended strain for food testing and enumeration of yeasts and moulds.

#### ***Salmonella* serotypes:**

MM11 *Salmonella* Typhimurium – NCTC® 12023 / ATCC® 14028 / WDCM 00031 – (1,4,5,12: i: 1,2) Used for media/test QC. ISO 11133 recommended for media QC in food, animal feed, milk and water applications. This is a common serotype from animals and from human infections.

MM62 *Salmonella* Enteritidis – NCTC® 12694 / ATCC® 13076 / WDCM 00030 – (1,9,12: g,m:- ) ISO 11133 recommended for media QC in food, animal feed, milk and water applications.

The following strains are unusual serotypes, used to avoid any chance of confusion with strains commonly found in animals, food, etc, and are used to control media and detection methods in the food industry:

MM84 *Salmonella* Nottingham – NCTC® 7832 – (16: d: e,n,z15) PHE recommended control for water testing.

MM89 *Salmonella* Poona – NCTC® 4840 – (13,22: z: 1,6) PHE recommended control strain for food testing.

#### ***Serratia marcescens*:**

MM12 – NCTC® 13382 / ATCC® 8100 – Used for disinfectant testing. PHE recommended negative control for indole test. Colonies are entire, glistening, smooth and translucent. Non-pigmented.

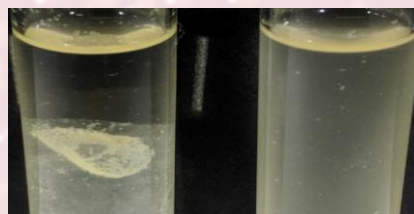


## ***Staphylococcus aureus* strains:**

### **(A) Fully sensitive:**

**MM13** – NCTC<sup>®</sup> 12981 / ATCC<sup>®</sup> 25923 / WDCM 00034 – Used in susceptibility and media testing/QC, Also food, animal feed and milk testing. ISO 11133 recommended for media testing. Fully sensitive to all anti-staphylococcal antibiotics (including penicillin and methicillin / oxacillin). It is preferable to maintain cultures on agar as passage in broth can result in a change in MIC levels. Colonies are circular white to cream, convex to flat in elevation. After 48 hours incubation a few grey/translucent variants may be noted. Beta-haemolytic on sheep blood agar.

**MM85** – NCTC<sup>®</sup> 6571 / ATCC<sup>®</sup> 9144 / WDCM 00035 – Historically used for susceptibility testing ('Oxford staph'), but largely superseded by MM13 as it has unusually low MIC's and so is unrepresentative of normal range of Staph aureus strains. Sensitive to penicillin and cefoxitin / methicillin / oxacillin. PHE recommended coagulase, DNase and catalase positive control. Used also for disinfectant testing. Recently found to carry gene for production of Panton-Valentin Leucocidin (PVL)



### **B) Penicillin resistant:**

**MM14** – NCTC<sup>®</sup> 12973 / ATCC<sup>®</sup> 29213 / WDCM 00131 – Used for susceptibility testing, especially for automated methodology EUCAST recommended strain. Sensitive to cefoxitin / methicillin / oxacillin. Penicillin resistant – weak beta-lactamase producer. Colonies are beta-haemolytic, and a golden-orange colour. QC of Enterococcosel broth

**MM30** – NCTC<sup>®</sup> 7447 / ATCC<sup>®</sup> 6538P / WDCM 00033 – Used for susceptibility testing/antibiotic assay, disinfectant testing and for food, animal feed and milk testing. Cefoxitin / methicillin / oxacillin sensitive. Penicillin resistant. Colonies are weakly beta-haemolytic, coagulase positive and beta-lactamase negative.

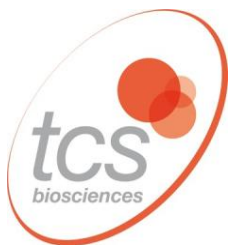
### **(C) MRSA (cefoxitin / methicillin / oxacillin resistant):**

**MM64** – NCTC<sup>®</sup> 12493 / WDCM 00212 (MRSA) – Possesses *mecA* gene and shows homogeneous resistance with MIC of >64 for methicillin, which produces high-level cefoxitin / methicillin / oxacillin resistance. EUCAST recommended for methicillin testing. Instances have been reported where loss of the *mecA* gene has occurred during storage. Also used for QC of Mueller-Hinton broth.

**MM91** – NCTC<sup>®</sup> 13373 / ATCC<sup>®</sup> 43300 / WDCM 00211 (MRSA) – Possesses *mecA* gene but is hetero-resistant, (so as few as one per thousand cells demonstrate the resistance) and consequently has low-level cefoxitin/oxacillin/methicillin resistance (4.0 mg/l MIC of oxacillin, 8.0 mg/l MIC of cefoxitin – methicillin sensitive strains have MIC of 0.12-0.5 for oxacillin and 1-4 for cefoxitin.); it is used to confirm testing procedures for methicillin resistance are working and provides a more stringent test than testing with an MRSA which shows homogeneous resistance and has a much higher MIC. This organism will have a zone of inhibition reduced in size compared to a fully cefoxitin / oxacillin / methicillin sensitive strain (such as MM13). Used for QC of Mueller-Hinton broth. There are two colony types, one beta-haemolytic and the other non-haemolytic.

### **D) Other:**

**MM46** – NCTC<sup>®</sup> 10788 / ATCC<sup>®</sup> 6538 / WDCM 00032 – Used in pharmaceutical industry for testing disinfectants and sterility testing. ISO 11133 recommended for media testing. Usually yellow pigmented colonies, or can produce a white colonial variant. Beta-haemolytic.



***Staphylococcus epidermidis:***

MM15 – NCTC® 13360 / ATCC® 12228 / WDCM 00036 – Used for media control / antibiotic assay. ISO 11133 recommended for media testing in food, animal feed and milk applications. Colonies are small and beta-haemolytic.

***Streptococcus agalactiae:*** (Beta-haemolytic Streptococcus group B)

MM16 – NCTC® 8181 / ATCC® 13813 – Type strain, used for QC. PHE recommended negative control for aesculin test.

***Streptococcus dysgalactiae* subsp. *equisimilis:***

MM60 – NCTC® 13762 - Type strain. Lancefield's group C, beta-haemolytic.

***Streptococcus pneumoniae* strains:**

MM19 – NCTC® 12695 / ATCC® 6303 – Is fully sensitive. Colonies are mucoid and alpha-haemolytic. A few colonies may have an irregular edge. Serotype 3.

MM95 – NCTC® 12977 / ATCC® 49619 – Has low-level, but clinically relevant, resistance to penicillin – this organism is used to assess detection of resistance rather than sensitivity. PHE recommended positive control for bile solubility test. EUCAST recommended control strain for susceptibility testing. Serotype 19F.

***Streptococcus pyogenes:***

MM20 – NCTC® 12696 / ATCC® 19615 – Used for QC and media testing. Lancefield group A, beta-haemolytic. PHE recommended blood agar control.

***Vibrio parahaemolyticus:***

MM06 – NCTC® 10885 / WDCM 00185 – Used for QC of media and ID testing. PHE recommended strain used mainly in the food industry.

***Yersinia enterocolitica:***

MM80 – NCTC® 12982 / ATCC® 9610 / WDCM 00038 – Type strain, used for media control. ISO 11133 recommended for media testing. Serotype O:8, which is a pathogenic serotype, commonest in USA.

**References:**

- 1 European Committee on Antimicrobial Susceptibility Testing (EUCAST). Routine and Extended Internal Quality Control for MIC Determination and Disc Diffusion. Version 8.0 - 01.01.2018.
- 2 UK Standards for Microbiology Investigations. Example Reference Strains for Microbiology Investigations Test Procedures: Bacteriology—Test Procedures | TP 1 | Issue No. 2 | 05.01.2015. Public Health England (PHE).
- 3 Microbiology of Food, Animal Feed and Water - Preparation, Production, Storage and Performance Testing of Culture Media. ISO 11133:2014



## How to use Selectrol®

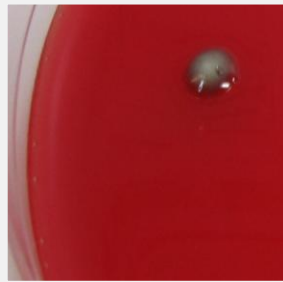
Always warm the vial to ambient temperature before opening.

Be sure to use non-selective culture media to revive the organisms.

For the more fastidious organisms, such as anaerobes, it is generally better to use agar rather than broth for revival.



Place disc on suitable growth medium such as blood agar



Leave disc for a few minutes to liquefy, then spread plate and incubate to produce isolated colonies



Obtain a stock culture which can be used to prepare an inoculum for biochemical and antibiotic susceptibility tests



Place disc in a small volume of a suitable broth medium such as brain-heart infusion



Allow disc a few minutes to dissolve, then spread aliquot onto a plate of suitable growth medium



## Out-of-specification results

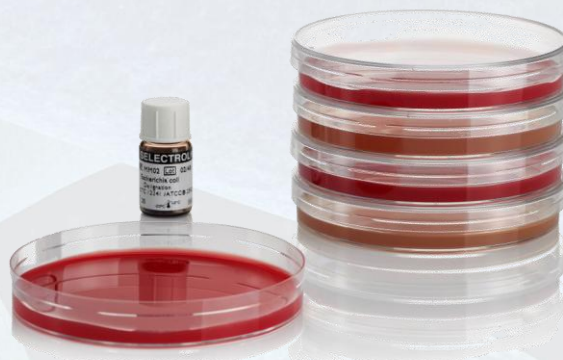
Laboratories use Selectrol® for Quality Control of culture media, biochemical identification tests and antimicrobial susceptibility testing. When a laboratory test result, an MIC or biochemical reaction, is unexpected or out-of-specification, the test should first be repeated to confirm it; an out-of-specification result is an indication that the testing procedure should be reviewed; it is not, in the first instance, a sign of a problem with the control organism.

If incorrect results are obtained on retesting, the explanation could be:

- The test procedure was not followed correctly – check standard operating procedures
- There is an instrumentation error – check calibration, mechanical functioning, etc
- There is a problem with the consumables – out of date, incorrect storage, etc
- The culture of the control organism has become contaminated

### Technical Support

If no explanation for out-of-spec results can be found, but repeated tests still give unacceptable results, please contact TCS and / or your relevant reference laboratory or instrument manufacturer for advice. For example, contact AMRHAI at Colindale, London if MIC results are consistently outside the acceptable range. Please retain any remaining discs of organisms about which you have concerns so they can be returned to TCS and investigated alongside retained samples.





## Preparing QC and Validation Spikes from Selectrol®

### Preparing the spike

- Place a Selectrol® disc in Brain Heart Infusion (BHI) broth\* or equivalent, and culture (typically for 18 hours) at the appropriate temperature for the organism (typically 37°C)
- Assume the count in the broth to be  $10^8$  organisms per ml ----- (A)
- Mix and transfer 100 µl of (A) to 100 ml of saline or ¼ strength Ringer's solution -- (B)
- Mix and transfer 100 µl of (B) to 10 ml of saline or ¼ strength Ringer's solution ----- (C)
- Mix and transfer 100 µl of (C) to your homogenised food sample.

### Verifying the inoculum

- Pipette 5 x 10 µl drops from (C) onto each of two agar plates for Miles and Misra counts.

### Using the assumptions and dilutions above:

- (A) contains  $10^8$  organisms per ml
- (B) contains  $10^5$  organisms per ml
- (C) contains  $10^3$  organisms per ml

### If the Miles and Misra counts indicate that the required count was not achieved:

- If the count was too high by a factor of 10, reduce the volume transferred from (A) to (B) from 100 µl to 10 µl
- If the count was too low by a factor of 10, increase the volume transferred from (A) to (B) from 100 µl to 1 ml.

Keep a record of the correct dilutions for each organism type for future use. You will find that this method is very repeatable.

\*Note: BHI broth will work for most of the Selectrol® organisms; however, for fastidious organisms an appropriate culture broth must be selected, e.g. Fastidious Anaerobe Broth for strictly anaerobic organisms.



## Culture Collections

Cultures of microorganisms have been deposited and subsequently maintained in 589 collections in 68 countries, and many of the cultures are derived from the same original isolate; the history of each organism, its properties and names of the culture collections which hold it are detailed in the relevant catalogues and websites.

Some of the organisms have been selected and recommended by expert organisations to be supplied as controls for microbiological tests, and when the identical cultures are present in more than one collection they will have a specific designation for each, incorporating the abbreviation for the collection and a reference number.

For example:- *Staphylococcus aureus* NCTC 7447, widely recommended as a control for antimicrobial susceptibility testing, is held in 30 collections, and consequently the phenotypically and genotypically identical organism has 30 different references, such as ATCC 6538P, CIP 53.156, DSM 346 and so on.

In an effort to minimise potential confusion and help users find local sources of reference strains, the WFCC and the WDCM initiated a system that ascribes each recommended QC strain a reference number (WDCM 00001 onwards), cites all collections that contain it and provides contact details and each collection's unique reference. For example, the strain of *Staphylococcus aureus* NCTC 7447 (Selectrol® strain MM33) mentioned above is designated WDCM 00033.

### ***Staphylococcus aureus* WDCM 00033**

AHU 1142; **ATCC™ 6538P**; BCRC 10451 ; BTCC 209P; BU 395; CCM 2022; CCTM 596; CCUG 1828; CECT 240; CIP 53.156; CN 3784; CNCTC Mau 28/58; DSM 346; FIRDI 451; IAM 1011; IAM 12082; IEM Mau 28/58; IFO 12732; IFO 3061; IID 671; IMET 10904; JCM 2151; LMG 8195; NCIMB 8625; **NCTC 7447**; NRRL B-313; OUT 8232; PCI 1209; PZH 8/54; RIMD 3109007; VNIIA 209P;

Products derived from the cultures in the collections should be manufactured using the minimum number of sub-cultures, to minimise the possibility of alterations to the phenotype due to mutations. Ideally, as in the case of **Selectrol®**, a single sub-culture only is used, so the **Selectrol®** product is a 'first generation derivative' of a culture supplied by NCTC, and will be identical with regard to its properties and suitability for use in QC applications to a culture of the particular organism obtained from any of the other WDCM listed culture collections.




---

Every effort has been made to ensure the accuracy of the information in this document, however TCS makes no warranties, expressed or implied, regarding errors or omissions and assumes no legal liability or responsibility for loss or damage resulting from the use of information contained within. E & O.E



# Selectrol Strain Index

Strain Name	Designation	Code	WDCM
<i>Aspergillus brasiliensis</i>	NCPF® 2275 / ATCC® 16404	MM94	00053
<i>Bacillus cereus</i>	NCTC® 10320 / ATCC® 9634/11778/19637	MM21	00001
<i>Bacillus cereus</i>	NCTC® 7464 / ATCC® 10876	MM86	
<i>Bacillus subtilis</i>	NCTC® 10400 / ATCC® 6633	MM29	00003
<i>Bacteroides fragilis</i>	NCTC® 9343 / ATCC® 25285	MM44	
<i>Burkholderia cepacia</i>	NCTC® 10661 / ATCC® 17759	MM70	
<i>Campylobacter jejuni</i>	NCTC® 11351 / ATCC® 33560	MM36	
<i>Campylobacter jejuni</i>	NCTC® 11322 / ATCC® 29428	MM82	00156
<i>Candida albicans</i>	NCPF® 3255 / ATCC® 2091	MM28	00055
<i>Candida albicans</i>	NCPF® 3179 / ATCC® 10231	MM42	00054
<i>Candida glabrata</i>	NCPF® 3309 / ATCC® 2001	MM69	
<i>Candida guilliermondii</i>	NCPF® 3099 / ATCC® 5276	MM71	
<i>Candida krusei</i>	NCPF® 3953 / ATCC® 6258	MM53	
<i>Candida lusitanae</i>	NCPF® 3954	MM72	
<i>Candida parapsilosis</i>	NCPF® 8334 / ATCC® 22019	MM54	
<i>Candida tropicalis</i>	NCPF® 3463	MM61	
<i>Citrobacter freundii</i>	NCTC® 9750 / ATCC® 8090	MM27	
<i>Clostridium perfringens</i>	NCTC® 8237 / ATCC® 13124	MM45	00007
<i>Clostridium sporogenes</i>	NCTC® 532 / ATCC® 19404	MM31	00008
<i>Enterobacter aerogenes</i>	NCTC® 10006 / ATCC® 13048	MM26	00175
<i>Enterobacter cloacae</i>	NCTC® 13380 / ATCC® 23355	MM01	00082
<i>Enterobacter cloacae</i>	NCTC® 13406	MM51	
<i>Enterococcus faecalis</i>	NCTC® 775 / ATCC® 19433	MM17	00009
<i>Enterococcus faecalis</i>	NCTC® 12697 / ATCC® 29212	MM18	00087
<i>Enterococcus faecalis</i>	NCTC® 13379 / ATCC® 51299	MM52	00085
<i>Enterococcus hirae</i>	NCTC® 13383 / ATCC® 10541	MM35	00011
<i>Escherichia coli</i>	NCTC® 12241 / ATCC® 25922	MM02	00013
<i>Escherichia coli</i>	NCTC® 11954 / ATCC® 35218	MM24	
<i>Escherichia coli</i>	NCTC® 10418 / ATCC® 10536	MM33	
<i>Escherichia coli</i>	NCTC® 12923 / ATCC® 8739	MM38	00012
<i>Escherichia coli</i>	NCTC® 11560	MM63	
<i>Escherichia coli</i>	NCTC® 9001 / ATCC® 11775	MM75	00090, 00155
<i>Escherichia coli</i> CRE	NCTC® 13476	MM57	
<i>Escherichia coli</i> (mcr-1)	NCTC® 13846	MM34	
<i>Escherichia coli</i> O157 (non-toxigenic)	NCTC® 12900 / ATCC® 700728	MM93	00014
<i>Haemophilus influenzae</i>	NCTC® 8468 / ATCC® 9334	MM100	
<i>Haemophilus influenzae</i>	NCTC® 12975 / ATCC® 49766	MM37	
<i>Haemophilus influenzae</i>	NCTC® 12699 / ATCC® 49247	MM81	
<i>Haemophilus influenzae</i>	NCTC® 11931	MM98	

Strain Name	Designation	Code	WDCM
<i>Klebsiella aerogenes</i>	NCTC® 9528	MM88	
<i>Klebsiella pneumoniae</i>	NCTC® 9633 / ATCC® 13883	MM04	00097
<i>Klebsiella pneumoniae</i>	NCTC® 13368 / ATCC® 700603	MM83	
<i>Klebsiella pneumoniae</i> CRE	NCTC® 13440	MM55	
<i>Klebsiella pneumoniae</i> CRE	NCTC® 13443	MM56	
<i>Klebsiella pneumoniae</i> CRE	NCTC® 13438	MM58	



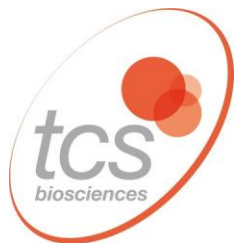
# Selectrol Strain Index

Strain Name	Designation	Code	WDCM
<i>Klebsiella pneumoniae</i> CRE	NCTC® 13442	MM59	
<i>Lactobacillus brevis</i>	NCTC® 13386 / ATCC® 8287	MM76	
<i>Legionella anisa</i>	NCTC® 11974 / ATCC® 35292	MM99	00106
<i>Legionella pneumophila</i> serogroup 1	NCTC® 11192 / ATCC® 33152	MM08	00107
<i>Listeria innocua</i>	NCTC® 11288 / ATCC® 33090	MM92	00017
<i>Listeria ivanovii</i>	NCTC® 11007 / ATCC® 19119	MM66	00018
<i>Listeria monocytogenes</i>	NCTC® 7973 / ATCC® 35152	MM48	00109
<i>Listeria monocytogenes</i>	NCTC® 10527 / ATCC® 13932	MM47	00021
<i>Listeria monocytogenes</i>	NCTC® 13372 ATCC® 7644	MM77	
<i>Listeria monocytogenes</i>	NCTC® 11994	MM87	00019
<i>Mycobacterium smegmatis</i>	NCTC® 8159 / ATCC® 19420	MM67	
<i>Neisseria gonorrhoeae</i>	NCTC® 8375 / ATCC® 19424	MM05	
<i>Neisseria gonorrhoeae</i>	NCTC® 12700 / ATCC® 49226	MM96	
<i>Proteus mirabilis</i>	NCTC® 11938	MM22	00023
<i>Proteus mirabilis</i>	NCTC® 13376 / ATCC® 14153	MM43	
<i>Proteus mirabilis</i>	NCTC® 10975	MM68	
<i>Proteus vulgaris</i>	NCTC® 4175 / ATCC® 13315	MM09	
<i>Pseudomonas aeruginosa</i>	NCTC® 12903 / ATCC® 27853	MM10	00025
<i>Pseudomonas aeruginosa</i>	NCTC® 12924 / ATCC® 9027	MM40	00026
<i>Pseudomonas aeruginosa</i>	NCTC® 13359 / ATCC® 15442	MM41	
<i>Pseudomonas aeruginosa</i>	NCTC® 10662 / ATCC® 25668	MM65	00114
<i>Rhodococcus equi</i>	NCTC® 1621 / ATCC® 6939	MM97	00028
<i>Saccharomyces cerevisiae</i>	NCTC® 10716/ ATCC® 9763	MM50	00058
<i>Saccharomyces cerevisiae</i>	NCPF® 3178	MM73	
<i>Salmonella</i> Enteritidis	NCTC® 12694 / ATCC® 13076	MM62	00030
<i>Salmonella</i> Nottingham	NCTC® 7832	MM84	
<i>Salmonella</i> Poona	NCTC® 4840	MM89	
<i>Salmonella</i> Typhimurium	NCTC® 12023/ ATCC® 14028	MM11	00031
<i>Serratia marcescens</i>	NCTC® 13382 / ATCC® 8100	MM12	
<i>Staphylococcus aureus</i>	NCTC®12981 / ATCC® 25923	MM13	00034
<i>Staphylococcus aureus</i>	NCTC® 12973 / ATCC® 29213	MM14	00131
<i>Staphylococcus aureus</i>	NCTC® 7447 / ATCC® 6538P	MM30	00033
<i>Staphylococcus aureus</i>	NCTC® 10788 / ATCC® 6538	MM46	00032
<i>Staphylococcus aureus</i>	NCTC® 6571 / ATCC® 9144	MM85	00035
<i>Staphylococcus aureus</i> (MRSA)	NCTC® 12493	MM64	00212
<i>Staphylococcus aureus</i> (MRSA)	NCTC® 13373 / ATCC® 43300	MM91	00211
<i>Staphylococcus epidermidis</i>	NCTC® 13360 / ATCC® 12228	MM15	00036
<i>Streptococcus agalactiae</i>	NCTC® 8181 / ATCC® 13813	MM16	
<i>Strep. dysgalactiae</i> subsp. <i>equisimilis</i>	NCTC® 13762	MM60	
<i>Streptococcus pneumoniae</i>	NCTC® 12695 /ATCC® 6303	MM19	
<i>Streptococcus pneumoniae</i>	NCTC® 12977 /ATCC® 49619	MM95	
<i>Streptococcus pyogenes</i>	NCTC® 12696 /ATCC® 19615	MM20	
<i>Vibrio parahaemolyticus</i>	NCTC® 10885	MM06	00185
<i>Yersinia enterocolitica</i>	NCTC® 12982 / ATCC® 9610	MM80	00038

# Selectrol Strains Listed by WDCM Number

WDCM	Strain Name	Designation	Code
00001	<i>Bacillus cereus</i>	NCTC® 10320 / ATCC® 9634/1177819637	MM21
00003	<i>Bacillus subtilis</i>	NCTC® 10400 / ATCC® 6633	MM29
00007	<i>Clostridium perfringens</i>	NCTC® 8237 / ATCC® 13124	MM45
00008	<i>Clostridium sporogenes</i>	NCTC® 532 / ATCC® 19404	MM31
00009	<i>Enterococcus faecalis</i>	NCTC® 775 / ATCC® 19433	MM17
00011	<i>Enterococcus hirae</i>	NCTC®13383 / ATCC® 10541	MM35
00012	<i>Escherichia coli</i>	NCTC® 12923 / ATCC® 8739	MM38
00013	<i>Escherichia coli</i>	NCTC® 12241 / ATCC® 25922	MM02
00014	<i>Escherichia coli</i> O157 (non-toxigenic)	NCTC® 12900 / ATCC® 700728	MM93
00017	<i>Listeria innocua</i>	NCTC® 11288 / ATCC® 33090	MM92
00018	<i>Listeria ivanovii</i>	NCTC® 11007 / ATCC® 19119	MM66
00019	<i>Listeria monocytogenes</i>	NCTC® 11994	MM87
00021	<i>Listeria monocytogenes</i>	NCTC® 10527 / ATCC® 13932	MM47
00023	<i>Proteus mirabilis</i>	NCTC® 11938	MM22
00025	<i>Pseudomonas aeruginosa</i>	NCTC® 12903 / ATCC® 27853	MM10
00026	<i>Pseudomonas aeruginosa</i>	NCTC® 12924 / ATCC® 9027	MM40
00028	<i>Rhodococcus equi</i>	NCTC® 1621 / ATCC® 6939	MM97
00030	<i>Salmonella</i> Enteritidis	NCTC® 12694 / ATCC® 13076	MM62
00031	<i>Salmonella</i> Typhimurium	NCTC® 12023 / ATCC® 14028	MM11
00032	<i>Staphylococcus aureus</i>	NCTC® 10788 / ATCC® 6538	MM46
00033	<i>Staphylococcus aureus</i>	NCTC® 7447 / ATCC® 6538P	MM30
00034	<i>Staphylococcus aureus</i>	NCTC®12981 / ATCC® 25923	MM13
00035	<i>Staphylococcus aureus</i>	NCTC® 6571 / ATCC® 9144	MM85
00036	<i>Staphylococcus epidermidis</i>	NCTC® 13360 / ATCC® 12228	MM15
00038	<i>Yersinia enterocolitica</i>	NCTC® 12982 / ATCC® 9610	MM80
00053	<i>Aspergillus brasiliensis</i>	NCPF® 2275 / ATCC® 16404	MM94
00054	<i>Candida albicans</i>	NCPF® 3179 / ATCC® 10231	MM42
00055	<i>Candida albicans</i>	NCPF® 3255 / ATCC® 2091	MM28
00058	<i>Saccharomyces cerevisiae</i>	NCTC® 10716/ ATCC® 9763	MM50
00082	<i>Enterobacter cloacae</i>	NCTC® 13380 / ATCC® 23355	MM01
00085	<i>Enterococcus faecalis</i>	NCTC® 13379 / ATCC® 51299	MM52
00087	<i>Enterococcus faecalis</i>	NCTC® 12697 / ATCC® 29212	MM18
00090	<i>Escherichia coli</i>	NCTC® 9001 / ATCC® 11775	MM75
00097	<i>Klebsiella pneumoniae</i>	NCTC® 9633 / ATCC® 13883	MM04
00106	<i>Legionella anisa</i>	NCTC® 11974 / ATCC® 35292	MM99
00107	<i>Legionella pneumophila</i> serogroup 1	NCTC® 11192 / ATCC® 33152	MM08
00109	<i>Listeria monocytogenes</i>	NCTC® 7973 / ATCC® 35152	MM48
00114	<i>Pseudomonas aeruginosa</i>	NCTC® 10662 / ATCC® 25668	MM65
00131	<i>Staphylococcus aureus</i>	NCTC® 12973 / ATCC® 29213	MM14
00155	<i>Escherichia coli</i>	NCTC® 9001 / ATCC® 11775	MM75
00156	<i>Campylobacter jejuni</i>	NCTC® 11322 / ATCC® 29428	MM82
00175	<i>Enterobacter aerogenes</i>	NCTC® 10006 / ATCC® 13048	MM26
00185	<i>Vibrio parahaemolyticus</i>	NCTC® 10885	MM06
00211	<i>Staphylococcus aureus</i> (MRSA)	NCTC® 13373 / ATCC® 43300	MM91
00212	<i>Staphylococcus aureus</i> (MRSA)	NCTC® 12493	MM64





## New Strains in 2019/2020

The following strains are now available:

***Listeria ivanovii*:**

MM66 – NCTC<sup>®</sup> 11007 / ATCC<sup>®</sup> 19119 / WDCM 00018 – *Listeria ivanovii* subspecies *ivanovii*, serovar 5.

Used for media testing in food, animal feed and milk applications.

***Candida glabrata*:**

MM69 – NCPF<sup>®</sup> 3309 / ATCC<sup>®</sup> 2001

***Candida guilliermondii*:**

MM71 – NCPF<sup>®</sup> 3099 / ATCC<sup>®</sup> 5276 – further details to follow

***Candida tropicalis*:**

MM61 – NCPF<sup>®</sup> 3643

***Candida lusitanae*:**

MM72 – NCPF<sup>®</sup> 3954

***Mycobacterium smegmatis*:**

MM67 NCTC<sup>®</sup> 8159 / ATCC<sup>®</sup> 19420



[www.tcsbiosciences.co.uk](http://www.tcsbiosciences.co.uk)



**TCS Biosciences Ltd**

Botolph Claydon, Buckingham, MK18 2LR, United Kingdom

t: +44 (0) 1296 714222, f: +44 (0) 1296 714806, e: [sales@tcsgroup.co.uk](mailto:sales@tcsgroup.co.uk)