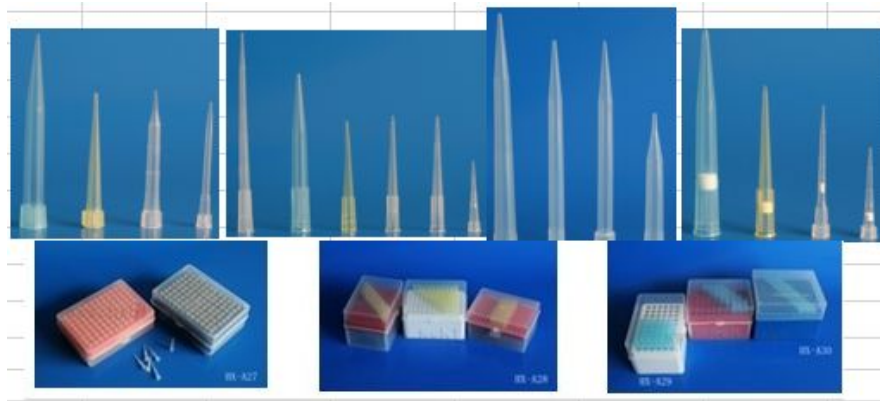




成都格柠美进出口有限公司

Chengdu Greenmed Import & Export Co., Ltd.



PIPETTE TIPS FOR EPPENDORF

CODE	DESCRIPTION	PCS/CARTON	CARTON SIZE(CM)	GROSS WEIGHT /NET WEIGHT (KGS)
GM-A01	1000ul blue tips for Eppendorf	16000	56x42x42	13kg/12kg
GM-A02	200ul yellow tips for Eppendorf	50000	56x42x42	13kg/12kg
GM-A03	300ul tips for Eppendorf	30000	56x42x34	13kg/12kg
GM-A04	10ul tips for Eppendorf(Long)	72000	56x42x42	15kg/14kg
GM-A05	200ul long tips for Gilson		56x42x42	
GM-A06	1000ul long blue tips for Kirgen		56x42x42	
GM-A07	1000ul blue tips for Gilson	16000	56x42x42	12.9kg/11.9kg
GM-A08	1000ul graduated tips for Gilson	16000	56x42x42	13kg/12kg
GM-A09	200ul yellow tips for Gilson	50000	56x42x42	13kg/12kg
GM-A10	200ul natural tips for Gilson	50000	56x42x42	13kg/12kg
GM-A11	200ul graduated tips for Gilson	50000	56x42x42	13kg/12kg
GM-A12	10ul tips for Gilson	140000	56x42x42	18kg/17kg
GM-A13	5ml tips for Fin	4800	56x42x42	15kg/14kg
GM-A14	5ml tips for Dalong&Eppendorf	4500	56x42x42	14kg/13kg
GM-A15	5ml short tips for Gillson	7500	56x42x42	17.5kg/16.5kg
GM-A16	10ml tips for Gilson&Eppendorf	3000	56x42x42	15kg/14kg
GM-A17	10ml tips for Rainin	3000	56x42x42	
GM-A18	10ml tips for Finn	3000	56x42x42	15.5kg/14.5kg
GM-A19	1000ul Eppendorf filter Tips	15000	56x42x42	14kg/13kg
GM-A20	1000ul Gilson filter Tips	15000	56x42x42	14kg/13kg
GM-A21	200ul Gilson filter Tips	50000	56x42x42	15kg/14kg
GM-A22	200ul Eppendorf filter Tips	50000	56x42x42	15kg/14kg
GM-A23	10ul Eppendorf filter Tips	72000	56x42x42	17kg/16kg
GM-A24	10ul Gilson filter Tips	140000	56x42x42	20kg/19kg
GM-A25	10ul tips box for Gilson (96well)	218	56x42x42	14kg/13kg
GM-A26	200ul tips box for Gilson (96well)	130	56x42x42	13.5kg/12.5kg
GM-A27	1000ul tips box for Gilson (60well)	100	56x42x42	11kg/10kg
GM-A28	1000ul tips box for Eppendorf (100well)	70	56x42x42	8.5kg/7.5kg

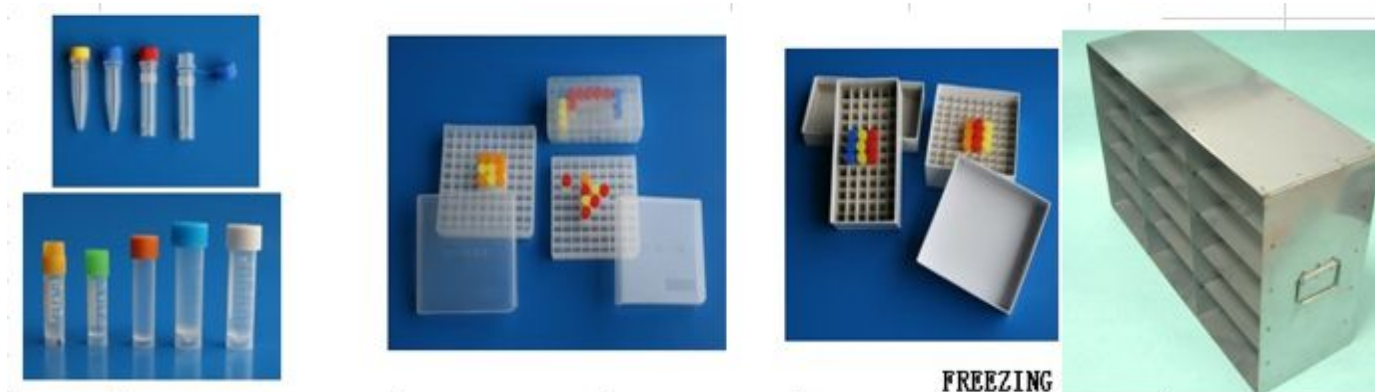
GM-A29	1000ul tips box for Gilson (100well)	70	56x42x42	8.5kg/7.5kg
GM-A30	5ml tips box for Eppendorf	50	56x42x42	10kg/9kg
GM-A31	10ul tips box for Eppendorf (96well)		56x42x42	
GM-A32	200ul tips box for Eppendorf (96well)		56x42x42	
GM-A33	1000ul long tips box for Kirgen			
GM-A34	10ml tips box	50	58x40x53	11kg/10kg
GM-A35	reagen tgroove			
GM-A36	pipettor rack "z" type	10	56x44x29	8kg/7kg
GM-A37	pipettor rack disc-shaped			



CENTRIFUGE TUBE

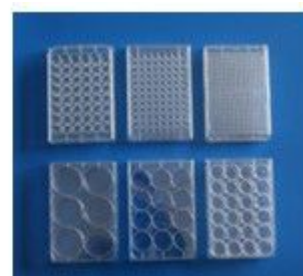
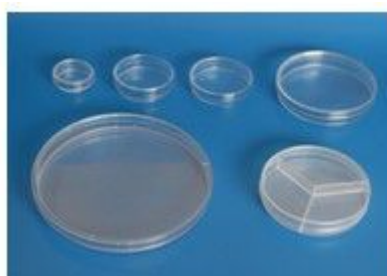
CODE	DESCRIPTION	PCS/CARTON	CARTON SIZE(CM)	GROSS WEIGHT /NET WEIGHT (KGS)
GM-B01	0.5ml Eppendorf tube	30000	56x42x42	15kg/14kg
GM-B02	1.5ml Eppendorf tube	14000	56x42x42	14kg/13kg
GM-B03	1.5ml (big cap) Eppendorf tube	14000	56x42x42	14kg/13kg
GM-B04	2ml Eppendorf tube	12000	56x42x42	12kg/11kg
GM-B05	5ml Eppendorf tube	6000	56x42x42	13kg/12kg
GM-B06	7ml Eppendorf tube	4000	56x42x42	11kg/10kg
GM-B07	10ml snap cap centrifuge tube	3600	56x42x42	20kg/19kg
GM-B08	10ml Eppendorf tube	3200	56x42x42	12kg/11kg
GM-B09	0.5ml screw cap centrifuge tube		56x42x42	
GM-B10	1.5ml screw cap centrifuge tube	12000	56x42x39	15kg/14kg
GM-B11	1.5ml microcentrifuge tube(with loop ,screw cap)	12000	56x42x39	15kg/14kg
GM-B12	10ml round bottom centrifuge tube	2600	56x42x42	16kg/15kg
GM-B13	10ml conical bottom centrifuge tube	2600	56x42x42	16kg/15kg
GM-B14	15ml centrifuge tube(snap cap)		56x42x42	
GM-B15	15ml centrifuge tube			
GM-B16	15ml conical bottom centrifuge tube	2400	56x42x42	16kg/15kg
GM-B16-1	15ml racked conical centrifuge tube			
GM-B17	15ml round bottom centrifuge tube	2400	56x42x42	16kg/15kg
GM-B18	30ml centrifuge tube(snap cap)			
GM-B19	50ml self-standing tube	700	56x42x42	11kg/10kg
GM-B20	50ml conical bottom centrifuge tube	800	56x42x42	12kg/11kg

GM-B20-1	50ml racked conical centrifuge tube	450	48x43x40	8kg/7kg
GM-B21	50ml round bottom centrifuge tube	800	56x42x42	11kg/10kg
GM-B22	50ml snap cap centrifuge tube	1000	56x42x42	15.5kg/14.5kg
GM-B23	50ml centrifuge tube(internal thread)			
GM-B24	50ml centrifuge tube(flat bottom)			
GM-B25	100ml round bottom centrifuge tube	480	56x42x42	12kg/11kg
GM-B26	100ml snap cap centrifuge tube	600	56x42x42	14kg/13kg
GM-B27	120ml snap cap centrifuge tube	480	56x42x37	12.5kg/11.5kg
GM-B28	0.2ml RCR tube box(96well)	250	56x42x42	15kg/14kg
GM-B29	0.5ml centrifuge tube box(72well)	92	56x42x42	10.5kg/9.5kg
GM-B30	1.5ml centrifuge tube box(100well)	60	56x42x42	10kg/9kg
GM-B31	1.5ml centrifuge tube box(50well)	92	56x42x42	10.5kg/9.5kg
GM-B32	1.5ml centrifuge tube box(72well)	92	56x42x42	10.5kg/9.5kg
GM-B33	5ml centrifuge tube box(32well)			
GM-B34	freezing box			
GM-B35	1.5ml freezing box (96well)	60	56x42x42	14.5kg/13.5kg
GM-B36	0.5ml,1.5ml,15ml,50ml centrifuge tube rack	108	56x42x42	15.5kg/14.5kg
GM-B37	50ml 15ml centrifuge tube rack	100	44x36x32	12.5kg/11.5kg
GM-B38	50ml 15ml centrifuge tube rack(big type)			
GM-B39	0.5/1.5ml two side centrifuge tube rack(60well)	100	46x33x33	14kg/13kg
GM-B40	0.5/1.5ml two side centrifuge tube rack(96well)	100	47x32x47	20kg/19kg
GM-B41	Paper storage box for 15ml centrifuge tube			
GM-B42	Paper storage box for 50ml centrifuge tube			



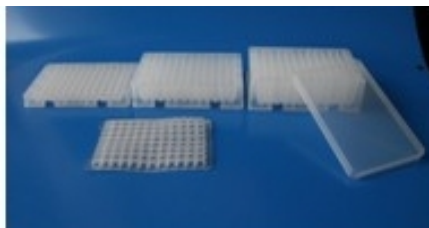
CODE	DESCRIPTION	PCS/CARTON	CARTON SIZE(CM)	GROSS WEIGHT /NET WEIGHT (KGS)
GM-C01	0.5ml self-standing cryo tube	12000	56x42x42	23kg/22kg
GM-C02	0.5ml self-standing cryo tube with loop	12000	56x42x42	23kg/22kg
GM-C03	1ml self-standing cryo tube		56x42x42	
GM-C04	1.5ml self-standing cryo tube	12000	56x42x42	17kg/16kg
GM-C05	1.5ml self-standing cryo tube with loop	12000	56x42x42	17kg/16kg
GM-C06	1.5ml self-standing cryo tube-2	12000	56x42x42	17kg/16kg
GM-C07	1.8ml cryo tube(conical bottom)		56x42x42	
GM-C08	1.8/2 ml cryo tube	10000	56x42x42	17kg/16kg

GM-C09	4ml cryo tube	8000	56x42x42	18kg/17kg
GM-C10	5ml cryo tube	4000	56x42x42	16kg/15kg
GM-C11	7ml cryo tube		56x42x42	
GM-C12	10ml cryo tube		56x42x42	13kg/12kg
GM-C13	1.8 ml self-standing cryo tube(inside thread)	10000	64x39x46	23kg/22kg
GM-C14	1.8ml cryo tube box(100well)	90	56x42x42	14.5kg/13.5kg
GM-C15	1.8ml cryo tube box(81well)	100	56x42x42	15.5kg/14.5kg
GM-C16	1.8ml cryo tube box(50well)	168	56x42x42	17kg/16kg
GM-C17	5ml cryo tube box(36well)	66	56x42x42	13kg/12kg
GM-C18	1.5/1.8ml cryo tube box with buckle	85	56x42x42	13kg/12kg
GM-C19	1.8ml paper cryo tube box(100well)	96	58x31x62	11kg/10kg
GM-C20	1.8ml paper cryo tube box(81well)	96	56x28x61	10kg/9kg
GM-C21	5ml paper cryo tube box(36well)	81	56x42x42	10kg/9kg
GM-C22	cryo tube box rack(10 layers)	4	70x38x34	8kg/7kg
GM-C23	cryo tube box rack (4x5)	3	59x49x33	9kg/8kg
GM-C24	cryo tube box rack(4x5,draw-out type)	3		

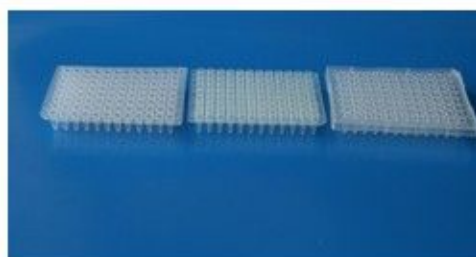


CODE	DESCRIPTION	PCS/CARTON	CARTON SIZE(CM)	GROSS WEIGHT /NET WEIGHT (KGS)
GM-D01	35x10mm petri dish	2000	42x42x28	6.5kg/5.5kg
GM-D02	60x15mm petri dish	1000	62x32x32	7kg/6kg
GM-D03	70x15mm petri dish	800	59x38x35	11kg/10kg
GM-D04	90x15mm petri dish(17g)	500	47x32x47	10kg/9kg
GM-D04-1	90x15mm petri dish(13g)	500	47x32x47	8kg/7kg
GM-D05	90x15mm petri dish(double room)	500	47x32x47	7.5kg/6.5kg
GM-D06	90x15mm petri dish(three room)	500	47x32x47	7.7kg/6.7kg
GM-D07	90x15mm petri dish(four room)	500	47x32x47	7.7kg/6.7kg
GM-D08	90x20mm petri dish	500	48x48x43	10kg/9kg
GM-D09	100x15mm petri dish	500	48x32x48	7.5kg/6.5kg
GM-D10	120x15mm petri dish	320	50x50x44	12kg/11kg
GM-D11	150x15mm petri dish	200	76x32x35	11.5kg/10.5kg
GM-D12	100x100mm petri dish	500	55x43x47	18kg/17kg
GM-D13	130x130mm petri dish	200	67x28x35	10.5kg/9.5kg
GM-D14	65mm petri dish with grid	1000		
GM-D15	100x100mm petri dish with grid	500	55x43x47	18kg/17kg
GM-D16	6 well culture plate	200	61x30x40	10.5kg/9.5kg

GM-D17	12 well culture plate	200	61x30x40	14kg/13kg
GM-D18	24 well culture plate	200	61x30x40	14.5kg/13.5kg
GM-D19	48 well culture plate	200	61x30x40	15.5kg/14.5kg
GM-D20	96 well culture plate(flat bottom)	200	44x29x43	12.5kg/11.5kg
GM-D21	96 well culture plate("U" bottom)	200	44x29x43	12.5kg/11.5kg
GM-D22	96 well culture plate("V" bottom)	200	44x29x43	12.5kg/11.5kg
GM-D23	384 well culture plate	250	58x30x40	



CODE	DESCRIPTION	PCS/CARTON	CARTON SIZE(CM)	GROSS WEIGHT /NET WEIGHT (KGS)
GM-D24	1ml deep well plate	320	56*42*42	17kg/16kg
GM-D25	1.6ml deep well plate	258	56*42*42	20kg/19kg
GM-D26	2.2ml deep well plate	226	56*42*42	22kg/21kg
GM-D27	PP cap for deep well plate			
GM-D28	soft cap for deep well plate			



PCR

CODE	DESCRIPTION	PCS/CARTON	CARTON SIZE(CM)	GROSS WEIGHT /NET WEIGHT (KGS)
GM-D29	0.2ml PCR tube(flat cap)	70000	56x42x42	13kg/12kg
GM-D30	0.2ml PCR tube(dome cap)	70000	56x42x42	14kg/13kg
GM-D31	0.5ml PCR tube	30000	56x42x42	14kg/13kg
GM-D32	0.1ml 4-strip PCR tube	100boxes(250s trips& caps/box)		
GM-D33	0.2ml 8-strip PCR tube	6000	56x42x42	10kg/9kg
GM-D34	0.2ml 12-strip PCR tube	4000	56x42x42	10kg/9kg
GM-D35	0.2ml PCR plate	700	56x42x42	16.5kg/15.5kg
GM-D36	0.2ml PCR plate(convex)	700	56x42x42	17.5kg/16.5kg
GM-D37	0.2ml PCR plate with rim	700	56x42x42	19kg/18kg
GM-D38	384well PCR plate			



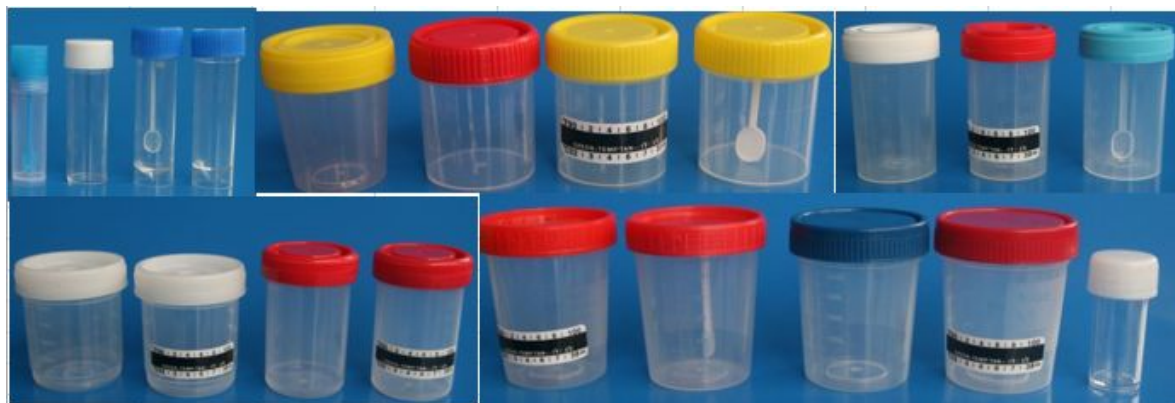


CODE	DESCRIPTION	PCS/CARTON	CARTON SIZE(CM)	GROSS WEIGHT /NET WEIGHT (KGS)
GM-D39	Elisa Plate 12tube*8strip	200	48x28x40	11kg/10kg
GM-D40	Elisa Plate 8tube*12strip	200	48x28x40	11kg/10kg
GM-D41	disposable hmagglutination plate("V"bottom)	2000	44x33x39	11kg/10kg
GM-D42	disposable hmagglutination plate("U"bottom)	2000	44x33x39	11kg/10kg
GM-D43	PMMA hmagglutination plate("V"bottom)	250	56x35x30	19kg/18kg
GM-D44	PMMA hmagglutination plate("U"bottom)	250	56x35x30	19kg/18kg
GM-D45	injection tube for HPLC			
GM-D46	1ul inoculating loop	5000	47x32x47	12.5kg/11.5kg
GM-D47	10ul inoculating loop	5000	47x32x47	12.5kg/11.5kg
GM-D48	cell spreader"L"			



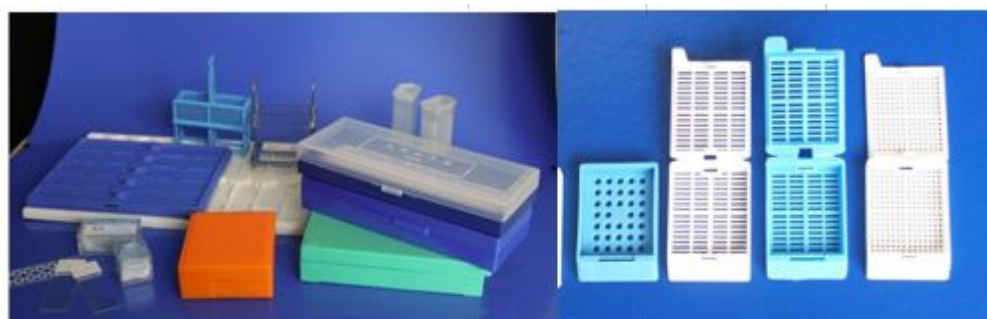
CODE	DESCRIPTION	PCS/CARTON	CARTON SIZE(CM)	GROSS WEIGHT /NET WEIGHT (KGS)
GM-I01	Swabs (wooden stick)	50000	60x40x48	11.5kg/10.5kg
GM-I02	Swabs (plastic stick)	50000	60x40x48	11.5kg/10.5kg
GM-I03	Male swabs	2000	47x27x35	8.5kg/7.5kg
GM-I04	Female swabs(wooden stick)	2000	53x29x34	9kg/8kg
GM-I05	Female swabs(plastic stick)	2000	53x29x34	9kg/8kg
GM-I06	Female swabs(steel stick)	2000	53x29x34	9kg/8kg
GM-I07	Female swabs with Stuart(peel pack)	1000	61x31x45	13.5kg/12.5kg
GM-I08	Female swabs with Amies(peel pack)	1000	61x31x45	13.5kg/12.5kg
GM-I09	Female swabs with Cary-blair(peel pack)	1000	61x31x45	13.5kg/12.5kg
GM-I10	Female swabs with Stuart Clr(peel pack)	1000	61x31x45	13.5kg/12.5kg
GM-I11	Female swabs with Amies Clr(peel pack)	1000	61x31x45	13.5kg/12.5kg
GM-I12	Female swabs with Cary-blair Clr(peel pack)	1000	61x31x45	13.5kg/12.5kg
GM-I13	Cytobrush-1			
GM-I14	Cytobrush-2			
GM-I15	Cytobrush-3	10000	47x28x34	13.3kg/12.3kg
GM-I16	30ml medicine cup			
GM-I17	German TECO-1-hole sample cup	50000	48x41x62	21kg/20kg
GM-I18	German TECO-2-hole sample cup	25000	57x63x41	19kg/18kg

GM-I19	BeckmanΦ14x25mm cup(0.5ml)	15000	62x38x39	14.3kg/13.3kg
GM-I20	Beckman 700 cup(1.5ml)	15000	62x38x39	14.3kg/13.3kg
GM-I21	Hitachi cup	10000	56x42x42	16kg/15kg
GM-I22	Abbott AXSYMΦ17.5x53mm cup	5000	52x33x43	11.6kg/10.6kg



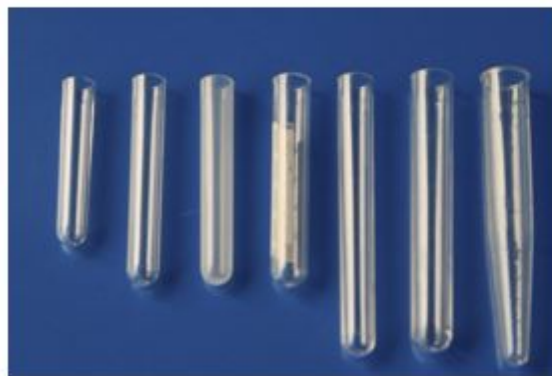
CODE	DESCRIPTION	PCS/CARTON	CARTON SIZE(CM)	GROSS WEIGHT /NET WEIGHT (KGS)
GM-K01	10ml urine container	1000	45x36x40	9.3kg/8.3kg
GM-K02	15ml stool container	2000	62x38x46	14kg/13kg
GM-K03	20ml urine container	1000	56x42x42	11kg/10kg
GM-K04	20ml stool container	1000	56x42x42	11.5/10.5kg
GM-K05	30ml sputum cup	1000	69x47x46	11kg/10kg
GM-K06	30/40ml specimen container	1000	58x40x62	11kg/10kg
GM-K07	30/40ml stool container	1000	58x40x62	11.5/10.5kg
GM-K08	30ml PS urine container	1000	56x42x52	11kg/10kg
GM-K09	30ml PS stool container	1000	56x42x52	11.5/10.5kg
GM-K10	40/50ml urine container	600	56x42x42	7kg/6kg
GM-K11	40/50ml stool container	600	56x42x42	8kg/7kg
GM-K12	60ml urine container(width mouth)	500	56x42x42	6.5kg/5.5kg
GM-K13	60ml stool container(width mouth)	500	56x42x42	7kg/6kg
GM-K14	60ml urine container with graduation	500	56x42x42	6.2kg/5.2kg
GM-K15	60ml stool container with graduation	500	56x42x42	6.4kg/5.4kg
GM-K16	60ml click lid urine container(14g)	500	56x42x42	8kg/7kg
GM-K17	80ml specimen container(cylindrical)	400	56x42x42	6kg/5kg
GM-K18	80ml specimen container(conical)	400	56x42x52	7kg/6kg
GM-K19	90ml speciemn container-1(14.5g)	400	56x42x52	7kg/6kg
GM-K20	90ml speciemn container-1(16g)	400	56x42x52	8kg/7kg
GM-K21	90ml specimen container-2	400	56x42x52	8kg/7kg
GM-K22	90ml click lid urine container	400	56x42x52	8kg/7kg
GM-K23	100/120ml specimen container(13.5g)	250	56x42x42	5kg/4kg
GM-K24	100/120ml specimen container(15g)	250	56x42x42	6kg/5kg
GM-K25	100/120ml stool container	250	56x42x42	6kg/5kg
GM-K26	125ml specimen container	250	56x42x42	6kg/5kg
GM-K27	125ml stool container	250	56x42x42	7kg/6kg
GM-K28	120ml specimen container(cylindrical)	300	56x42x44	7kg/6kg

GM-K29	140ml specimen container	250	60x30x55	7kg/6kg
GM-K30	90ml vacuum container	400	56x42x52	8kg/7kg
GM-K31	13x100mm vacuum tube	1800	50x35x34	18kg/17kg
GM-K32	120ml vacuum container-1	250	56x42x42	
GM-K33	120ml vacuum container-2	250	56x42x42	
GM-K34	16x100mm vacuum tube	1200	40x35x36	14kg/13kg
GM-K35	16x100mm vacuum tube with boric acid	1200	40x35x36	14kg/13kg
GM-K36	250ml specimen container	230	60x40x78	8kg/7kg
GM-K37	80ml vacuum container	400	56x42x52	7kg/6kg



CODE	DESCRIPTION	PCS/CARTON	CARTON SIZE(CM)	GROSS WEIGHT /NET WEIGHT (KGS)
GM-1818	18x18mm cover slip	50000	36x21x13	12kg/11kg
GM-2020	20x20mm cover slip	50000	36x21x13	13kg/12kg
GM-2222	22x22mm cover slip	50000	35x34x13	14kg/13kg
GM-2424	24x24mm cover slip	50000	35x34x13	18kg/17kg
GM-2432	24x32mm cover slip	40000	44x27x19	22kg/21kg
GM-2440	24x40mm cover slip	25000	41x25x17	15kg/14kg
GM-2450	24x50mm cover slip	25000	41x25x17	16kg/15kg
GM-2460	24x60mm cover slip	25000	46x34x25	23kg/22kg
GM-E01	7101 microscope slides	2500	36x18x16	14kg/13kg
GM-E02	7105 microscope slides with frosted end	2500	36x18x16	14kg/13kg
GM-E03	7103 depression slide with one hole	2500	40x19x16	16kg/15kg
GM-E04	7104 depression slide with two hole	2500	40x19x16	16kg/15kg
GM-E05	7107 microscope slides with frosted end(double)	2500	36x18x16	14kg/13kg
GM-E06	microscope slides with printing(customized)	2500	36x18x16	14kg/13kg
GM-E07	slides storage box(1pcs)			
GM-E08	slides storage box(2pcs)			
GM-E09	slides storage box(3pcs)			
GM-E10	slides storage box(5pcs)	1650	56x42x42	16kg/15kg
GM-E11	slides storage box(12pcs)			
GM-E12	slides storage box(25pcs)	200	43x36x43	12kg/11kg
GM-E13	slides storage box(50pcs)	160	56x42x42	18.5kg/17.5kg
GM-E14	slides storage box(100pcs)	82	56x42x42	18kg/17kg
GM-E15	slide storage box 100pcs(metal clasp)			
GM-E16	operation board (10pcs)			

GM-E17	operation board (20pcs)			
GM-E18	stainless staining rack 26pcs			
GM-E19	stainless staining rack 32pcs			
GM-E20	plastic staining rack with container	100	61x43x25	13kg/12kg
GM-E21	stained glass cylinder(5pcs)	60	45*37*25	20kg/18kg
GM-E22	stained glass cylinder(10pcs)	64	43*34*24	24kg/22kg
GM-E23	embedding cassette(round hole without lid)			
GM-E24	embedding cassette(square hole)	4500	56x42x42	16kg/15kg
GM-E25	embedding cassette(rectangle hole)	4500	56x42x42	16kg/15kg
GM-E26	embedding cassette(rectangle hole-two part)			



CODE	DESCRIPTION	PCS/CARTON	CARTON SIZE(CM)	GROSS WEIGHT /NET WEIGHT (KGS)
GM-F01	12x60mm test tube			
GM-F02	12x75mm test tube	5000	56x42x34	12kg/11kg
GM-F03	13x75mm test tube	5000	56x42x42	13kg/12kg
GM-F04	12X100mm test tube			
GM-F05	13x100mm test tube	4000	56x42x42	14.5kg/13.5kg
GM-F06	15x100mm test tube	3200	56x42x42	14.3kg/13.3kg
GM-F07	16x100mm test tube	3000	56x42x42	13.8kg/12.8kg
GM-F08	16x102mm conical test tube	2500	56x42x42	12kg/11kg
GM-F09	17x100mm test tube			
GM-F10	20ml flat bottom test tube (screw cap)			
GM-F11	12ml culture tube	2400	56x42x42	14.5kg/13.5kg
GM-F12	flang urine immersed tube 15ml(18*103)	2000	48x33x40	13.4kg/12.4kg
GM-F13	screw cap urine immersed tube 15ml(18*103)	2000	48x33x51	14kg/13kg
GM-F14	urine immersed tube 15ml(18*103)	2400	52x33x42	16kg/15kg
GM-F15	12x75mm BD tube	5000	56x42x34	12kg/11kg
GM-F16	13x75mm BD tube	5000	56x42x42	13kg/12kg
GM-F17	10x75mm PE test tube	10000		
GM-F18	12x75mm PE test tube	10000	51x40x50	8.8kg/7.8kg
GM-F19	12x100mm PE test tube	10000	72x36x49	10.8kg/9.8kg
GM-F20	12x100mm PE test tube(conical bottom)	6000	72x36x49	10.8kg/9.8kg
GM-F21	15x100mm PE test tube	6000	72x36x49	10.8kg/9.8kg
GM-F22	15x100mm PE test tube(conical bottom)	6000	72x36x49	10.8kg/9.8kg

GM-F23	12mm test tube stopper	40000	56x42x42	17kg/16kg
GM-F24	13mm test tube stopper	36000	56x42x42	18kg/17kg
GM-F25	16mm test tube stopper	22000	56x42x42	16kg/15kg
GM-F26	50 well (with silica ring) test tube rack	50	56x42x42	14kg/13kg
GM-F27	Φ13mm test tube rack(50well)	100	54x38x32	19kg/18kg
GM-F28	Φ15mm test tube rack(50well)	100	54x38x32	19kg/18kg
GM-F29	Φ18mm test tube rack(40well)	100	54x38x32	19kg/18kg
GM-F30	Test tube rack(10-13mm 90well)	50	43x34x40	7.5kg/6.5kg
GM-F31	Test tube rack(12-15mm 60well)	50	43x34x40	7.5kg/6.5kg
GM-F32	Test tube rack(15-18mm 44well)	50	43x34x40	8kg/7kg
GM-F33	Test tube rack(26-30mm 21well)	100	56x42x35	13kg/12kg
GM-F34	Cylindrical test tube rack(66well)	100	56x42x39	11kg/10kg
GM-F35	Test tube rack	100		
GM-F36	Stainless Steel test tube rack (40well)	34	56x42x42	14kg/13kg



CODE	DESCRIPTION	PCS/CARTON	CARTON SIZE(CM)	GROSS WEIGHT /NET WEIGHT (KGS)
GM-H01	0.2ml pipette			
GM-H02	0.5ml pipette 115mm			
GM-H03	0.5ml pipette 85mm	30000	56x42x42	12.8kg/11.8kg
GM-H04	300ul pipette with double head			
GM-H05	1ml pipette	10000	56x42x42	8kg/7kg
GM-H06	1ml fine pipette	10000	56x42x42	8kg/7kg
GM-H07	2ml pipette	8000	56x42x42	10kg/9kg
GM-H08	3ml pipette	6000	56x42x42	9kg/8kg
GM-H09	3ml pipette long	6000	56x42x42	9kg/8kg
GM-H10	5ml pipette	3600	56x42x42	8kg/7kg
GM-H11	10ml pipette	1600	56x42x42	8kg/7kg
GM-H12	1ml pipette individual packing	5000	56x42x42	10kg/9kg
GM-H13	2ml pipette individual packing	5000	56x42x42	10kg/9kg
GM-H14	3ml pipette individual packing	5000	56x42x42	10kg/9kg
GM-H15	3ml pipette long individual packing	4500	56x42x42	10kg/9kg
GM-H16	5ml pipette individual packing	2500	56x42x42	10kg/9kg
GM-H17	1ml serological pipette	3000	60x36x37	15kg/14kg
GM-H18	2ml serological pipette	2400	62x36x38	14kg/13kg
GM-H19	5ml serological pipette	1800	63x41x48	17kg/16kg

GM-H20	10ml serological pipette	1200	63x41x41	15kg/14kg
GM-H21	25ml serological pipette	800	56x38x43	14kg/13kg
GM-H22	50ml serological pipette	600	63x42x50	18kg/17kg
GM-H23	ESR Tube	2000	38x28x38	8.6kg/7.6kg



CODE	DESCRIPTION	PCS/CARTON	CARTON SIZE(CM)	GROSS WEIGHT /NET WEIGHT (KGS)
GM-G01	50ml reagent bottle	120	52x33x24	15kg/14kg
GM-G02	100ml reagent bottle	80	53x31.5x24	16kg/15kg
GM-G03	250ml reagent bottle	64	62.5x33x33	19kg/18kg
GM-G04	500ml reagent bottle	48	55x37.5x40	23kg/22kg
GM-G05	1000ml reagent bottle	24	64.5x43x25	17kg/16kg
GM-G06	2000ml reagent bottle	16		
GM-G07	3000ml reagent bottle	12	68x51x33	16kg/15kg
GM-G08	5000.ml reagent bottle	6		
GM-G09	10000ml reagent bottle	4		
GM-G10	20000ml reagent bottle	2		
GM-G11	100ml amber reagent bottle	144	50x37x37.5	23kg/22kg
GM-G12	250ml amber reagent bottle	72	70x31x32.5	21.5kg/20.5kg
GM-G13	500ml amber reagent bottle	48	55x37.5x40	25kg/24kg
GM-G14	1000ml amber reagent bottle	24	64.5x43x25	18kg/17kg
GM-G15	100ml bottle for reagent can't touch air	80	53x31.5x24	18kg/17kg
GM-G16	250ml bottle for reagent can't touch air	64	62.5x33x33	20kg/19kg
GM-G17	500ml bottle for reagent can't touch air	48	55x37.5x40	25.5kg/24.5kg
GM-G18	1000ml bottle for reagent can't touch air	24	64.5x43x25	19kg/18kg
GM-G19	100ml HPLC bottle	80	53x31.5x24	19kg/18kg
GM-G20	250ml HPLC bottle	64	62.5x33x33	21.5kg/20.5kg
GM-G21	500ml HPLC bottle	48	55x37.5x40	25kg/24kg
GM-G22	1000ml HPLC bottle	24	64.5x43x25	18kg/17kg

Wash bottle(material:HDPE)



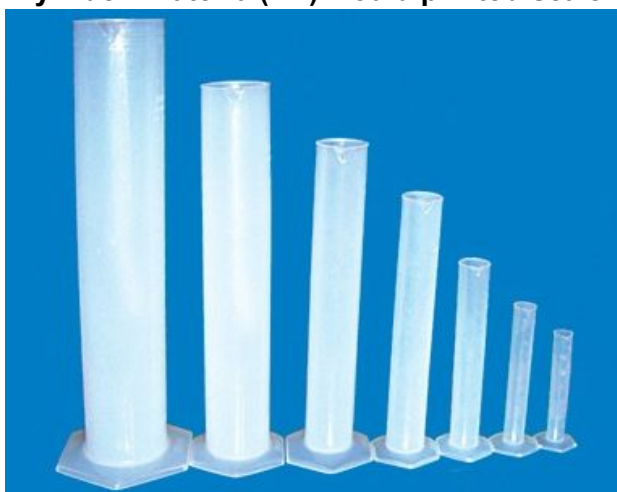
CODE	DESCRIPTION	QTY/CARTON	CARTON SIZE(CM)	QTY
GM-J01	250ml(red cap)	400	68x55.5x57	
GM-J02	500ml(red cap)	200	68x55.5x57	
GM-J03	250ml(white cap)	400	68x55.5x57	
GM-J04	500ml(white cap)	200	68x55.5x57	
GM-J05	1000ml(red cap)	100	68x55.5x57	
GM-J06	1000ml(white cap)	100	68x55.5x57	

Cylinder material(PP) printed scale



CODE	DESCRIPTION	QTY/CARTON	CARTON SIZE(CM)	QTY
GM-L01	10ml	2000	48x50x80	
GM-L02	25ml	1200	44x57x83	
GM-L03	50ml	700	48x50x80	
GM-L04	100ml	400	48x50x80	
GM-L05	250ml	200	48x50x80	
GM-L06	500ml	100	48x50x80	
GM-L07	1000ml	66	48x50x80	

Cylinder material(PP) mould printed scale



CODE	DESCRIPTION	QTY/CARTON	CARTON SIZE(CM)	QTY
GM-L09	10ml	2000	48x50x80	
GM-L10	25ml	1200	48x50x80	

GM-L11	50ml	700	48x50x80	
GM-L12	100ml	400	48x50x80	
GM-L13	250ml	200	48x50x80	
GM-L14	500ml	100	48x50x80	
GM-L15	1000ml	66	48x50x80	
GM-L16	2000ml	32	48x50x80	

Funnel material(PP)



CODE	DESCRIPTION	QTY/CARTON	CARTON SIZE(CM)	QTY
GM-M01	75mm	1000	68x55.5x57	
GM-M02	90mm	700	70x53x66	
GM-M03	50mm	2500	68x55.5x57	
GM-M04	60mm	2000	68x55.5x57	
GM-M05	120mm	360	68x55.5x57	
GM-M06	150mm	240	68x55.5x57	

Reagent bottle PP



CODE	DESCRIPTION	QTY/CARTON	CARTON SIZE(CM)	QTY
GM-N01	5000ml	18	68x55.5x57	
GM-N02	10000ml	9	68x55.5x57	

Reagent bottle (wide mouth,with graduation) LDPE





CODE	DESCRIPTION	QTY/CARTON	CARTON SIZE(CM)	QTY
GM-N03	30ml	3000	95x160	
GM-N04	50ml	2000	95x160	
GM-N05	100ml	1200	95x160	
GM-N06	250ml	400	55x57x68	
GM-N07	500ml	200	55x57x68	
GM-N08	1000ml	150	95x160	
GM-N09	2000ml	75	95x160	
GM-N10	2500ml	55	95x160	

Reagent bottle (narrow mouth,with graduation) LDPE



CODE	DESCRIPTION	QTY/CARTON	CARTON SIZE(CM)	QTY
GM-N11	30ml	3000	95x160	
GM-N12	50ml	2000	95x160	
GM-N13	100ml	1200	95x160	
GM-N14	250ml	400	55x57x68	
GM-N15	500ml	200	55x57x68	
GM-N16	1000ml	150	95x160	

Volumetric flask



CODE	DESCRIPTION	QTY/CARTON	CARTON SIZE(CM)	QTY
GM-O01	25ml	1000	53x37x38	
GM-O02	50ml	600	67x40x44	
GM-O03	100ml	500	82x51x47	
GM-O04	250ml	200	82x51x47	
GM-O05	500ml	100	82x51x47	
GM-O06	1000ml	70	82x51x47	

Breaker(PP)



CODE	DESCRIPTION	QTY/CARTON	CARTON SIZE(CM)	QTY
GM-P01	25ml	4000	82x51x47	
GM-P02	50ml	2400	82x51x47	
GM-P03	150ml	1000	68x55.5x57	
GM-P04	100ml	900	82x51x47	
GM-P05	250ml	500	68x57x57	
GM-P06	500ml	300	82x51x47	
GM-P07	1000ml	180	82x51x47	

Cup(PP)



CODE	DESCRIPTION	QTY/CARTON	CARTON SIZE(CM)	QTY
GM-Q01	25ml	2000	68x55.5x57	
GM-Q02	50ml	1000	82x51x47	
GM-Q03	100ml	700	68x55.5x57	

GM-Q04	500ml	500	70x53x66	
--------	-------	-----	----------	--

CUP WITH HANDLE(PP)



CODE	DESCRIPTION	QTY/CARTON	CARTON SIZE(CM)	QTY
GM-Q05	250ml	400	48x50x80	
GM-Q06	500ml	200	48x50x80	
GM-Q07	1000ml	150	68x57x57	
GM-Q08	2000ml	100	71x52x66	
GM-Q09	5000ml	30	83x44x57	

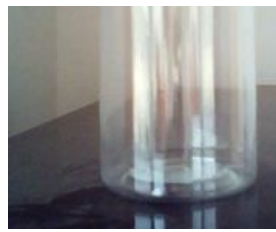
Erlenmeyer flask(PP)



CODE	DESCRIPTION	QTY/CARTON	CARTON SIZE(CM)	QTY
GM-R01	100ml	600	68x55.5x57	
GM-R02	250ml	250	68x55.5x57	
GM-R03	500ml	150	68x55.5x57	
GM-R04	1000ml	60	68x55.5x57	
GM-R05	2000ml	34	68x55.5x57	

Other bottles(PP&PET)





CODE	DESCRIPTION	QTY/CARTON	CARTON SIZE(CM)	QTY
GM-S01	50ml Square bottle	1000		
GM-S02	100ml Square bottle	500		
GM-S03	250ml Square bottle	300		
GM-S04	500ml Square bottle	200		
GM-S05	1000ml Square bottle	100		
GM-S06	1500ml Square bottle	50		
GM-S07	30ml PET bottle	1500	82x51x47	
GM-S08	60ml PET bottle	1000	82x51x47	
GM-S09	100ml PET bottle	760	82x51x47	
GM-S10	150ml PET bottle	600	82x51x47	
GM-S11	250ml PET bottle	500	82x51x47	

Payment terms: T/T

QUOTATION (FOB Shanghai)

Delivery Time: 7-30days after receipt of the payment