

BAYLAN

WATER METERS

TY-3

Multi jet Wet type Water Meter



GENERAL

- MID Certified
- Multi jet working principle assures a long service time
- Available for optical reading
- Electrostatic painted body made of corrosion resistant brass
- Pulse output and AMR reading features are optional
- Suitable for potable water
- Low pressure loss, high sensitivity at initial flow
- Non return valve
- Special glass with high resistance to pressure and impact
- 360° rotating lid
- Suitable for cold water up to 50°C
- Almost no maintenance • 3 years of warranty
- Service and spare parts available for 10 years
- Environmental Classes

Climatic : -10°C/+55°C | Mechanic: M1/O | Elektromagnetic: E2

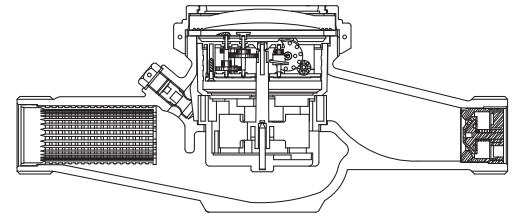
• Q2 ≤ Q ≤ Q4 Maximum Permissible Error

Class 2 Water Meters; %±2 (Water Temp. ≤ 30°C), %±3 (Water Temp. > 30°C)

Class 1 Water Meters; %±1 (Water Temp. ≤ 30°C), %±2 (Water Temp. > 30°C)

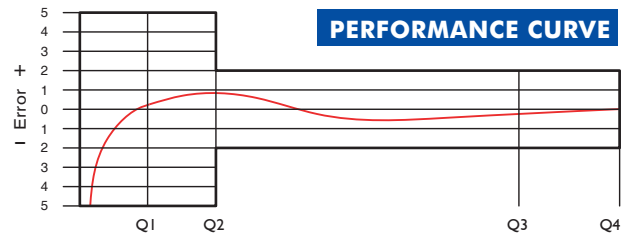
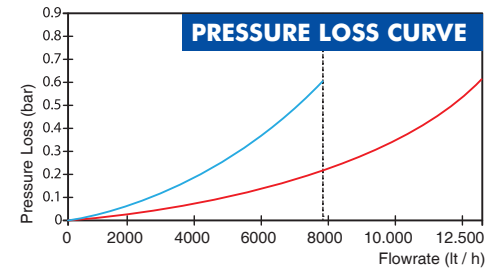
• Q1 ≤ Q < Q2 Maximum Permissible Error

Class 2 Water Meters; % ± 5 | Class 1 Water Meters; % ± 3



PERFORMANCE DATA

| | | | | | | |
|----------------------------------|----------------|-------------------|-------------------------------------|---------|--------|-------|
| Overload Flowrate | Q4 | m ³ /h | 7,875 | | 12,5 | |
| Permanent Flowrate | Q3 | m ³ /h | 6,3 | | 10 | |
| Transitional Flowrate | Q2 | m ³ /h | 0,0504 | 0,126 | 0,01 | 0,254 |
| Minimum Flowrate | Q1 | m ³ /h | 0,0315 | 0,07875 | 0,0625 | 0,159 |
| Q3/Q1 (MI-001 OIML R49) | - | | ≤200 | ≤80 | ≤160 | ≤63 |
| Mounting on the network | - | | H | V | H | V |
| Maximum Registration Capacity | m ³ | | 9999 / 99999 / 99999,99 / 99999,999 | | | |
| Maximum Working Pressure | bar | | 16 | | | |
| Maximum Working Temperature | °C | | 50 | | | |
| Pressure Loss Class | bar | | 0,63 | | | |
| Initial Flow | Qi | l/h | 15 | | | |
| Smallest Reading Resolution | m ³ | | 0,00005 | | | |
| Class | - | | Class 1/Class 2 | | | |
| Unit weight | kg | | 2,10 | | | |
| Package Weight (without connect) | kg | | 22,19 | | | |
| Package Weight (with connect) | kg | | 26,59 | | | |
| Quantity per package | - | | 10 | | | |
| Package dimensions | cm | | 26,5x52x30,5 | | | |



DIMENSIONS

| | | | |
|----------------------------|----|--------|----|
| Nominal diameter | DN | 25 | |
| Connecting diameter | D | G1 1/4 | B |
| Total overall meter height | H | 125,8 | mm |
| Axis height | h | 42,5 | mm |
| Width | B | 93 | mm |
| Length | L | 260 | mm |
| Length with connections | LB | 380 | mm |

