

THE NETHERLANDS  
(N E D E R L A N D)

## COMMUNICATION

Concerning <sup>(1)</sup>:


- ~~approval granted~~
- approval extended
- ~~approval refused~~
- ~~approval withdrawn~~
- ~~production definitely discontinued~~

of a type of tyre for motor vehicles pursuant to Regulation number 54.

**Approval number: E4\*54R00/26\*52094\*02**

1. Manufacturer's name and address : Wanli Tire Corporation Limited  
3 Wanli Road Aotou Town, Conghua 510940  
Guangzhou City, Guangdong Province  
China (PRC)
2. Tyre type designation <sup>(2)</sup> :
  - 2.1. Brand name(s)/trademark(s) : AUFINE; MAXELL; FLYBULL
  - 2.2. Trade description (s)/Commercial name(s)/ : SMART ADM818; MASTER MAS700;  
SUPER MD818; SMART AEL5; SUPER HA1;  
MASTER MAS300; SMART ADR8;  
SUPER LD2; MASTER MAS600  
APEX AEL7; ECOMAX HA3;  
ENDURO FAL1; APEX ADR9;  
ECOMAX LD6; ENDURO FDR2;  
ENDURO FDM38
3. If applicable, name and address of the manufacturer's representative : Not applicable
4. Summarized description:
  - 4.1. Tyre-size designation : 315/80R22.5
  - 4.2. Category of use : ~~normal~~/snow/~~special~~ <sup>(1)</sup>
  - 4.3. Structure : ~~diagonal (bias-ply)~~/radial <sup>(1)</sup>
  - 4.4. Tyre class : ~~E2~~/C3 <sup>(1)</sup>



- 4.5. Speed category symbol:
- 4.5.1. nominal : J
- 4.5.2. additional (if applicable) : K
- 4.6. Load-capacity indices:
- 4.6.1. Corresponding to nominal speed:
- single : 160
  - twinned (dual) : 157
- 4.6.2. Corresponding to additional speed:
- single : 157
  - twinned (dual) : 154
5. Technical service and, where applicable, test laboratory approved for purposes of approval or of verification of conformity : IDIADA Automotive Technology, S.A.  
L'Albornar, P.O. Box 20  
43710 Santa Oliva (Tarragona)  
Spain
6. Date of report issued by that service : February 22, 2023  
February 27, 2024  
November 26, 2024
7. Number of report issued by that service : CN23020952  
CN24021021  
CN24112134
8. Reason(s) for extension (if applicable) : Addition of trade description.
9. Any remarks : ---
10. Place : Zoetermeer
11. Date : 24 December 2024
12. Signature : 
13. Annexed to this communication is a list of documents in the approval file deposited at the administrative service having delivered the approval and which can be obtained upon request.
- Application form relating to ECE approval for a pneumatic tyre pursuant to Regulation number 54.
  - The drawing of the tyre's sidewalls, tread and dimensioned cross-section.
  - The test report as mentioned in item 7.

---

<sup>(1)</sup> Strike out what does not apply.

<sup>(2)</sup> A list of brand name(s)/trademark(s) or Trade description(s)/ Commercial name(s) may be annexed to this communication.

TECHNICAL DOCUMENTATION

**APPLICATION FOR APPROVAL OF A TYPE OF PNEUMATIC TYPE FOR PRIVATE CARS  
ACCORDING TO ECE REGULATION NO. 54, 00 SERIES OF AMENDMENTS**

~~APPROVAL~~ Grant / Extension / Correction

1. Trade name or trade mark on the tyre : AUFINE; MAXELL; FLYBULL
2. Tyre type designation by the manufacturer : SMART ADM818; MASTER MAS700; SUPER MD818;  
SMART AEL5; SUPER HA1; MASTER MAS300  
SMART ADR8; SUPER LD2; MASTER MAS600  
APEX AEL7; ECOMAX HA3; ENDURO FAL1;  
APEX ADR9; ECOMAX LD6; ENDURO FDR2;  
ENDURO FDM38
3. Manufacturer's name and address : Wanli Tire Corporation Limited  
3 Wanli Road, Aotou Town, Conghua 510940 Guangzhou  
City, Guangdong Province China (PRC)
4. Name and address of manufacturer's representative : not applicable
5. Summarized description
- 5.1 Size designation : 315/80R22.5
- 5.2 Category of use : ~~normal~~/ snow/ ~~special use~~
- 5.3 Structure : ~~diagonal (bias ply)~~ / radial
- 5.4 Tyre Class : ~~E2~~/C3
- 5.5 Speed category symbol
- 5.5.1 nominal : J
- 5.5.2 additional (if applicable) : K
- 5.6 Load capacity indices
- 5.6.1 corresponding to nominal speed : single: 160                      twined(dual): 157
- 5.6.2 corresponding to additional speed : single: 157                      twined(dual): 154
6. Overall dimensions : ~~Annex 5~~/ calculated
- Section width/ Measured max overall SW : 316.1
- Outer diameter/ Measured max outer diameter : 1093.1
7. Factor "X" : 0.75
8. Ply-rating number for diagonal (bias ply) tyres : not applicable
9. Rims on which the tyre can be mounted : 9.75; 9.00
10. Measuring rim and test rim : 9.00
11. State whether the tyre is : tubeless/~~tube type~~
12. inflation pressure and index for measuring and testing : see attached test report
13. Submitted for approval on (date) : Oct.12.2024

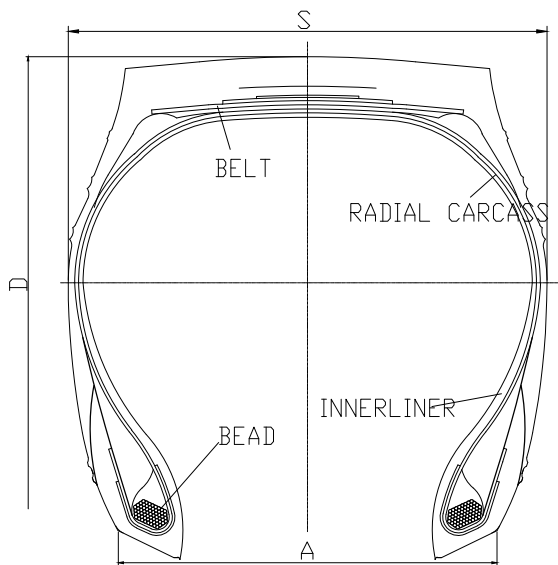
Signature:

Name:

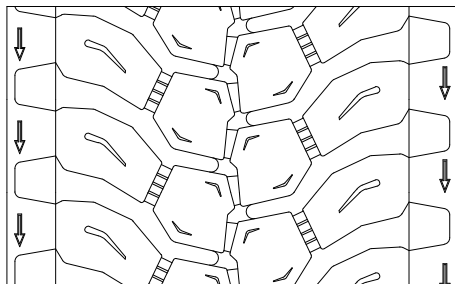
Wanli Tire Corporation Limited

E4\*54R00/26\*52094\*02

iDiADA CN24112134



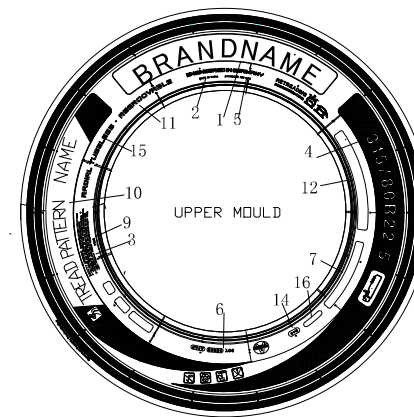
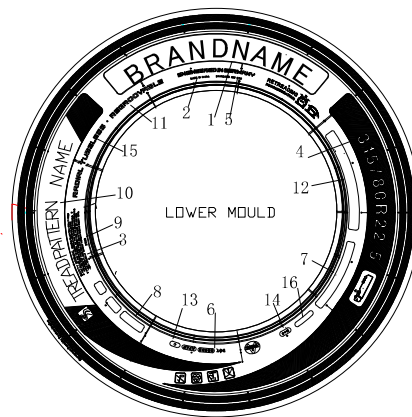
TREAD PATTERNS



(48 BLOCKS)

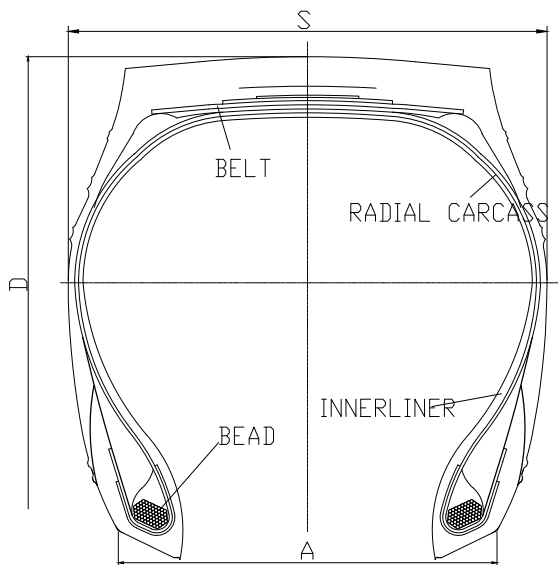
TABLE 1

BRAND NAME	TREAD PATTERN NAME
AUFINE	SMART ADM818; MASTER MAS700
MAXELL	SUPER MD818
FLYBULL	ENDURO FDM38

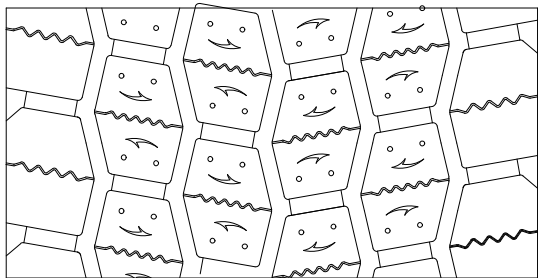


16	TRACTION
15	RADIAL TUBELESS
14	M+S
13	**** (DATE CODE)
12	L. R. M 22PR PLIES: TREAD STEEL 5 SIDEWALL STEEL 1 MAX. LOAD SINGLE 4500kg (9920lbs) AT 950kPa (138psi) COLD MAX. LOAD DUAL 4125kg (9090lbs) AT 950kPa (138psi) COLD
11	REGROOVABLE
10	TREAD PATTERN NAME (SEE THE TABLE 1 ON THE LEFT)
9	**** (MOLD NUMBER)
8	ECE Approval mark and number
7	315/80R22.5 <sup>160/157J</sup> AT 950kPa <sup>(157/154)K</sup> 22PR
6	DOT *****
5	STANDARD RIM 9.00
4	315/80R22.5
3	SAFETY WARNING
2	MADE IN CHINA
1	BRAND NAME (SEE THE TABLE 1 ON THE LEFT)
	LOWER MOULD
	UPPER MOULD

		315/80R22.5	160/157 (157/154)	J ( K )	TL	1076	312	228.6
		TYRE SIZE	LOAD INDEX	SPEED SYMBOL	TYPE	D (mm)	S (mm)	A (mm)
Approve by:	孙宗涛	Check by:	顾伟	Draft by:	鉴继超	Page 1 of 5		



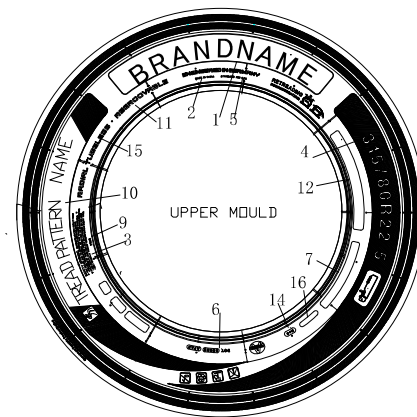
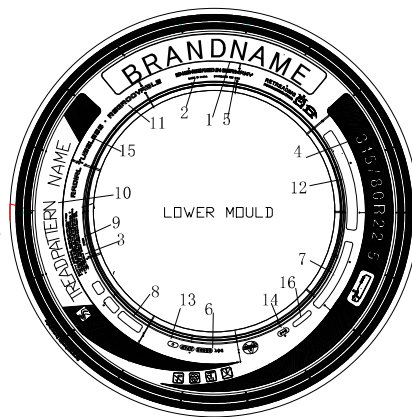
TREAD PATTERNS



(50 BLOCKS)

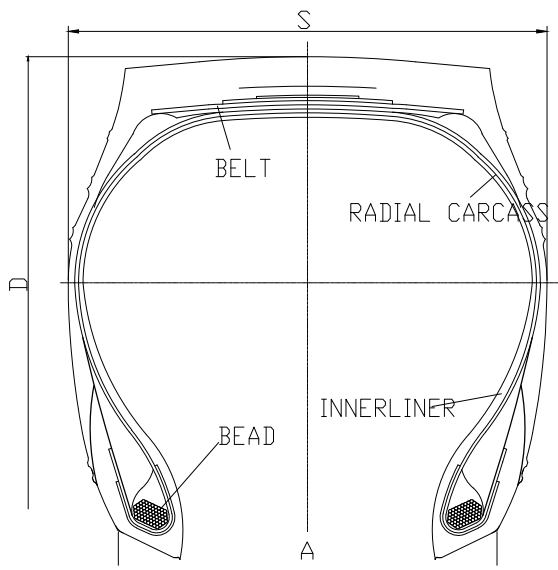
TABLE 1

BRAND NAME	TREAD PATTERN NAME
AUFINE	SMART ADR8; MASTER MAS600
MAXELL	SUPER LD2

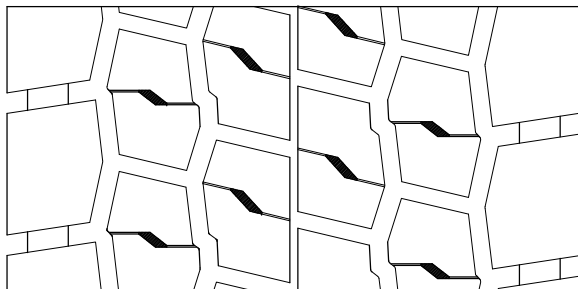


16	TRACTION
15	RADIAL TUBELESS
14	M+S
13	**** (DATE CODE)
12	L. R. M 22PR PLIES: TREAD STEEL 5 SIDEWALL STEEL 1 MAX. LOAD SINGLE 4500kg (9920lbs) AT 950kPa (138psi) COLD MAX. LOAD DUAL 4125kg (9090lbs) AT 950kPa (138psi) COLD
11	REGROOVABLE
10	TREAD PATTERN NAME (SEE THE TABLE 1 ON THE LEFT)
9	**** (MOLD NUMBER)
8	ECE Approval mark and number
7	315/80R22.5 <sup>160/157J</sup> AT 950kPa (157/154)K 22PR
6	DOT ***** ****
5	STANDARD RIM 9.00
4	315/80R22.5
3	SAFETY WARNING
2	MADE IN CHINA
1	BRAND NAME (SEE THE TABLE 1 ON THE LEFT)
	LOWER MOULD
	UPPER MOULD

		315/80R22.5	160/157 (157/154)	J ( K )	TL	1076	312	228.6
		TYRE SIZE	LOAD INDEX	SPEED SYMBOL	TYPE	D (mm)	S (mm)	A (mm)
Approve by:	孙宗涛	Check by:	顾伟	Draft by:	鉴继超	Page 2 of 5		



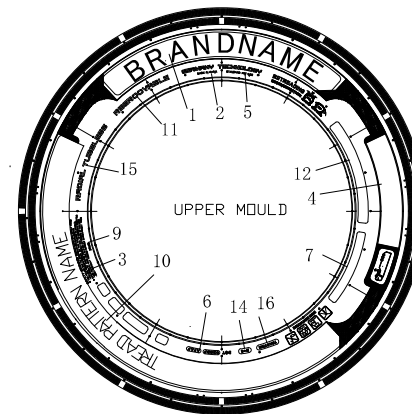
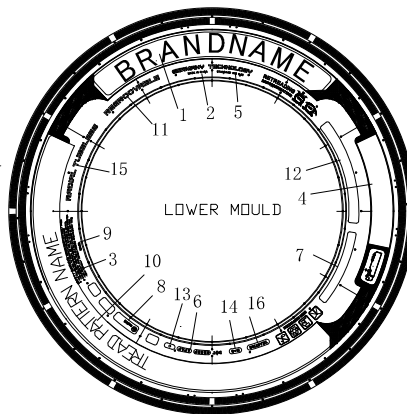
TREAD PATTERNS



〈52 BLOCKS〉

TABLE 1

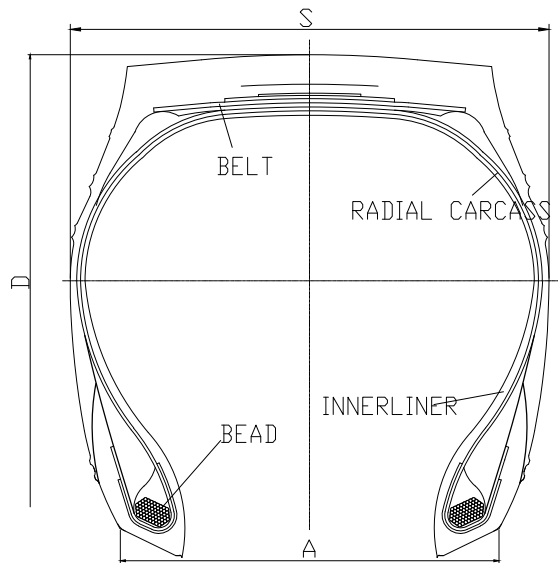
BRAND NAME	TREAD PATTERN NAME
AUFINE	APEX ADR9
MAXELL	ECDMAX LD6
FLYBULL	ENDURO FDR2



16	TRACTION	
15	RADIAL TUBELESS	
14	M+S	
13	**** (DATE CODE)	
12	L. R. M 22PR PLIES: TREAD STEEL 5 SIDEWALL STEEL 1 MAX. LOAD SINGLE 4500kg (9920lbs) AT 950kPa (138psi) COLD MAX. LOAD DUAL 4125kg (9090lbs) AT 950kPa (138psi) COLD	
11	REGROOVABLE	
10	TREAD PATTERN NAME (SEE THE TABLE 1 ON THE LEFT)	
9	**** (MOLD NUMBER)	
8	ECE Approval mark and number	
7	315/80R22.5 <sup>160/157J</sup> <sub>AT 950kPa</sub> (157/154)K 22PR	
6	DOT *****	
5	STANDARD RIM 9.00	
4	315/80R22.5	
3	SAFETY WARNING	
2	MADE IN CHINA	
1	BRAND NAME (SEE THE TABLE 1 ON THE LEFT)	
	LOWER MOULD	UPPER MOULD

315/80R22.5	160/157 (157/154)	J ( K )	TL	1076	312	228.6
TYRE SIZE	LOAD INDEX	SPEED SYMBOL	TYPE	D (mm)	S (mm)	A (mm)

Approve by:	孙宗涛	Check by:	顾伟	Draft by:	鉴继超	Page 3 of 5
-------------	-----	-----------	----	-----------	-----	-------------



TREAD PATTERNS

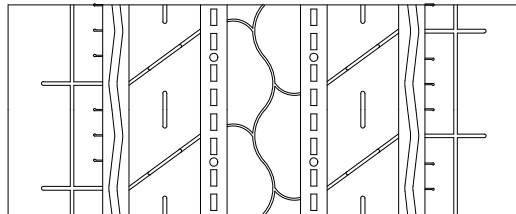
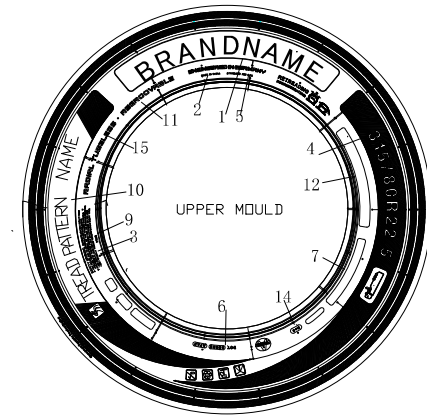
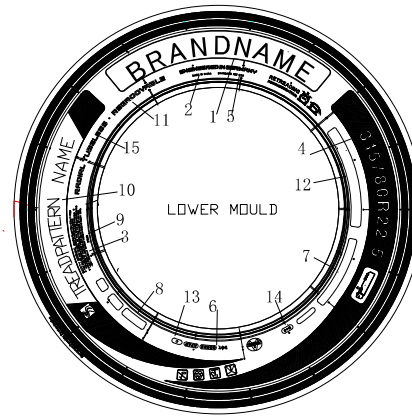


TABLE 1

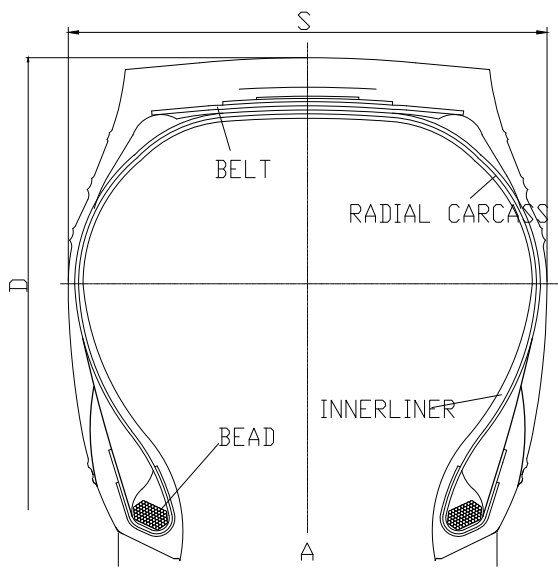
BRAND NAME	TREAD PATTERN NAME
AUFINE	SMART AEL5; MASTER MAS300
MAXELL	SUPER HA1



15	RADIAL TUBELESS	
14	M+S	
13	**** (DATE CODE)	
12	L. R. M 22PR PLIES: TREAD STEEL 5 SIDEWALL STEEL 1 MAX. LOAD SINGLE 4500kg (9920lbs) AT 950kPa (138psi) COLD MAX. LOAD DUAL 4125kg (9090lbs) AT 950kPa (138psi) COLD	
11	REGROOVABLE	
10	TREAD PATTERN NAME (SEE THE TABLE 1 ON THE LEFT)	
9	**** (MOLD NUMBER)	
8	ECE Approval mark and number	
7	315/80R22.5 <sup>160/157J</sup> AT 950kPa (157/154)K 22PR	
6	DOT ***** ****	
5	STANDARD RIM 9.00	
4	315/80R22.5	
3	SAFETY WARNING	
2	MADE IN CHINA	
1	BRAND NAME (SEE THE TABLE 1 ON THE LEFT)	
	LOWER MOULD	UPPER MOULD

		315/80R22.5	160/157 (157/154)	J ( K )	TL	1076	312	228.6
		TYRE SIZE	LOAD INDEX	SPEED SYMBOL	TYPE	D (mm)	S (mm)	A (mm)
Approve by:	孙宗涛	Check by:	顾伟	Draft by:	鉴继超	Page 4 of 5		





TREAD PATTERNS

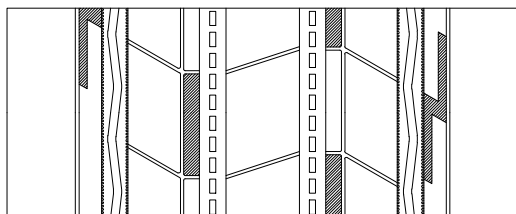
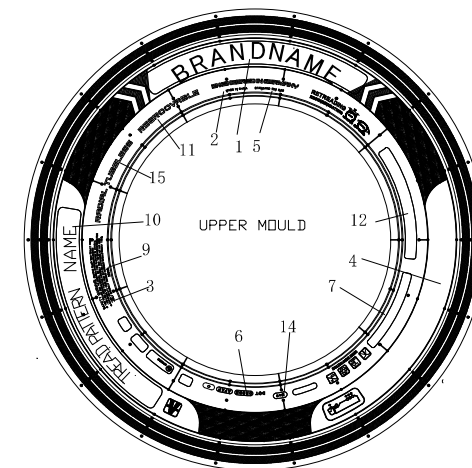
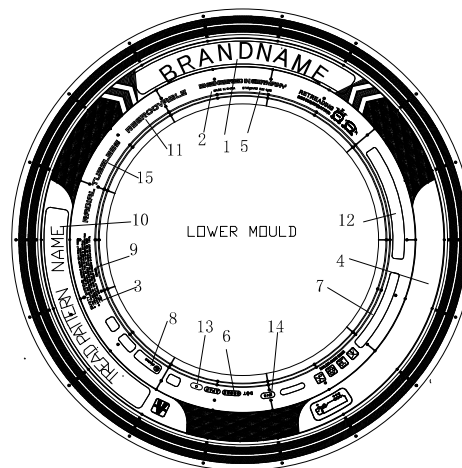


TABLE 1

BRAND NAME	TREAD PATTERN NAME
AUFINE	APEX AEL7
MAXELL	ECDMAX HA3
FLYBULL	ENDURO FAL1



15	RADIAL TUBELESS	
14	M+S	
13	**** (DATE CODE)	
12	PLIES: TREAD STEEL 5 SIDEWALL STEEL 1 L. R. M MAX. LOAD SINGLE 4500kg (9920lbs) AT 950kPa (138psi) COLD 22PR MAX. LOAD DUAL 4125kg (9090lbs) AT 950kPa (138psi) COLD	
11	REGROOVABLE	
10	TREAD PATTERN NAME (SEE THE TABLE 1 ON THE LEFT)	
9	**** (MOLD NUMBER)	
8	ECE Approval mark and number	
7	315/80R22.5 <sup>160/157J</sup> <sub>AT 950kPa</sub> (157/154)K 22PR	
6	DOT ***** ****	
5	STANDARD RIM 9.00	
4	315/80R22.5	
3	SAFETY WARNING	
2	MADE IN CHINA	
1	BRAND NAME (SEE THE TABLE 1 ON THE LEFT)	
	LOWER MOULD	UPPER MOULD

315/80R22.5	160/157 (157/154)	J ( K )	TL	1076	312	228.6
TYRE SIZE	LOAD INDEX	SPEED SYMBOL	TYPE	D (mm)	S (mm)	A (mm)

Approve by:	孙宗涛	Check by:	顾伟	Draft by:	鉴继超	Page 5 of 5
-------------	-----	-----------	----	-----------	-----	-------------

**REPORT No. CN24112134**
**APPROVAL OF PNEUMATIC TYRES FOR COMMERCIAL VEHICLES  
AND THEIR TRAILERS REFERRING TO UN REGULATION NO. 54R00/26**

Approval number : E4\*54R00/26\*52094\*02

Applicant : Wanli Tire Corporation Limited  
3 Wanli Road Aotou Town, Conghua  
510940 Guangzhou City,  
Guangdong Province China (PRC)

Manufacturer : Wanli Tire Corporation Limited  
3 Wanli Road Aotou Town, Conghua  
510940 Guangzhou City,  
Guangdong Province China (PRC)

Brand-name(s)/trademark(s) : AUFINE; MAXELL; FLYBULL

Trade description(s)/Commercial name(s) : SMART ADM818; MASTER MAS700; SUPER MD818;  
SMART AEL5; SUPER HA1; MASTER MAS300  
SMART ADR8; SUPER LD2; MASTER MAS600  
APEX AEL7; ECOMAX HA3; ENDURO FAL1;  
APEX ADR9; ECOMAX LD6; ENDURO FDR2;  
ENDURO FDM38

Tyre size designation : 315/80R22.5

Place and date of test report issue : L'Albornar, Santa Oliva (Tarragona)  
26/11/2024


**CONCLUSIONS:** Modification introduced to the tyre, as detailed in the annex to this report, grant grounds for approval extension with respect to formerly certified tyre-type, and FULFILS the specifications relating to the approval of pneumatic tyres for motor vehicles according to Supplement 26 to the original version of the Regulation 54.00.

Performed by:

Revised by:



Zhu Yuan  
HOMOLOGATION ENGINEER



Josep Masip Gomez  
DEPARTMENT MANAGER

\* THE PRESENTED RESULTS REFER ONLY TO THE TESTED SAMPLE  
\* THE PARTIAL REPRODUCTION OF THIS REPORT WITHOUT THE PERMISSION OF IDIADA IS COMPLETELY FORBIDDEN

## ANNEX TO THE REPORT

### Reason(s) for extension:

- Addition of trade description;
- The test report No. CN23020952 issued on the date of February 22, 2023 by IDIADA Automotive Technology S.A. is valid and unnecessary to perform re-testing.

Test results are as follows:

### 1. TECHNICAL DESCRIPTION OF THE PNEUMATIC TYRE:

Brand-name(s)/trademark(s)	:	MAXELL
Trade description(s)/Commercial name(s)	:	SUPER MD818
Tyre-size designation	:	315/80R22.5
Category of use	:	<del>normal</del> -/ snow / <del>special</del>
Structure	:	<del>diagonal</del> -/ <del>bias-belted</del> -/ radial
Speed category index	:	nominal : J additional : K
Load-capacity index	:	nominal: single : 160 twinned : 157 additional: single : 157 twinned : 154
X of the manufacturer /	:	0.75
Tyre cross-section	:	See technical documentation

### 2. TYRE MARKING

#### 2.1. Compulsory Marking

Approval mark	:	
Approval mark Height > 12 mm	:	Yes
Tyre definition marking height	:	
Tyre size > 6 mm	:	Yes
Load and speed index > 6 mm	:	Yes

---

\* THE PRESENTED RESULTS REFER ONLY TO THE TESTED SAMPLE  
 \* THE PARTIAL REPRODUCTION OF THIS REPORT WITHOUT THE PERMISSION OF IDIADA IS COMPLETELY FORBIDDEN  
 \* MEASUREMENT UNCERTAINTY OF THE RESULTS HAS BEEN CALCULATED BY THE LABORATORY.  
 \* THE DECISION RULE USED, ACCORDING TO THE ILAC-G8 STANDARD, WAS THE BINARY STATEMENT FOR SIMPLE ACCEPTANCE.

## 2.2. Additional Marking

“M+S” / “M.S” / “M&S”	:	M+S
“TUBELESS”	:	Yes
Index of inflation pressure	:	950 kPa
Ply rating	:	22 PR
“ET” / “ML” / “MPT” / “POR”	:	N.A.
“REGROOVABLE”	:	Yes
Date of manufacture	:	0123
Height of these marking > 4 mm	:	Yes

## 3. TEST RESULTS.

Sample Reception date	:	07/01/2023
Place and test dates	:	08/01/2023-10/01/2023 WANLI Testing Center (Hefei, China)
Sample Id.	:	CN23020952
Measure rim code	:	9.00 × 22.5
Test rim Code	:	9.00 × 22.5

### 3.1. Pneumatic tyre measurement

Mounting pressure in <b>measuring rim</b>	:	<b>P(1m) = 9.5 bar</b>
Conditioning temperature	:	<b>Temp. = 20 °C</b>
Adjusted pressure before conditioning	:	<b>P(2m) = 9.5 bar</b>
Readjusted pressure after <b>24</b> hours	:	<b>P(3m) = 9.5 bar</b>

---

\* THE PRESENTED RESULTS REFER ONLY TO THE TESTED SAMPLE  
 \* THE PARTIAL REPRODUCTION OF THIS REPORT WITHOUT THE PERMISSION OF IDIADA IS COMPLETELY FORBIDDEN  
 \* MEASUREMENT UNCERTAINTY OF THE RESULTS HAS BEEN CALCULATED BY THE LABORATORY.  
 \* THE DECISION RULE USED, ACCORDING TO THE ILAC-G8 STANDARD, WAS THE BINARY STATEMENT FOR SIMPLE ACCEPTANCE.

### 3.1.1. Tyre width measurement:

Measures of **overall width** at six equally-spaced points:

Point	Overall width (mm)
1	315.7
2	315.6
3	316.1
4	315.8
5	315.4
6	315.6
Point	Maximum width (mm)
3	316.1

### 3.1.2. Tyre section width calculation:

$S = 312$  (mm) given by Annex 5/Calculation

Or

$$S = S_1 + K(A - A_1)$$

Nominal section width (mm)	315
K coefficient	0.4
Measuring rim Width (mm)	228.6
X of the manufacturer	0.75
Theoretical rim Width (mm)	236.25

Maximum measured width (mm)	Section width (mm)	Difference (%)
$S_M = 316.1$	$S = 312$	1.31

The overall width of a tyre may be less than the section or exceed the value by the following percentages: 8% structure diagonal; 4 % structure radial. For section width exceed 305mm shall not exceed the value by the following percentages: 4% structure diagonal; 2 % structure radial of nominal aspect higher than 60.

FULFILS / DOES NOT FULFIL

- \* THE PRESENTED RESULTS REFER ONLY TO THE TESTED SAMPLE
- \* THE PARTIAL REPRODUCTION OF THIS REPORT WITHOUT THE PERMISSION OF IDIADA IS COMPLETELY FORBIDDEN
- \* MEASUREMENT UNCERTAINTY OF THE RESULTS HAS BEEN CALCULATED BY THE LABORATORY.
- \* THE DECISION RULE USED, ACCORDING TO THE ILAC-G8 STANDARD, WAS THE BINARY STATEMENT FOR SIMPLE ACCEPTANCE.

### 3.1.3. Outer diameter measurement

Maximum circumference (mm)	Outer diameter (mm) $D_{ext} = \frac{L}{\pi}$
3434	1093.1

### 3.1.4. Tyre outer diameter calculation:

$$D = d + 2H$$

Conventional number of the nominal rim(mm)	<b>d = 572 mm</b>
Nominal section width (mm)	315
Nominal aspect ratio	80
Factor a	0.97
Factor b	Radial:1.04 (Normal), 1.06(Special) Diagonal:1.08 (Normal), 1.09(Special)
Nominal section height (mm)	<b>H = 252 mm</b>

Dmin $D_{min} = d + 2(H \times a)$	Outer diameter D (measured)	Dmax $D_{max} = d + 2(H \times b)$
1060 mm	1093.1 mm	1107 mm
<b>Dmin &lt; D &lt; Dmax</b>		

FULFILS / DOES NOT FULFIL

### 3.2 Load/speed performance test

#### 3.2.1 For tyres with speed category symbol Q and above:

##### Test Conditions

Speed category	N.A.
Load capacity index	N.A.
Maximum velocity (km/h)	N.A.
Test axle load (kg)	N.A.
Maximum speed during the test (km/h)	N.A.
Load of axle during the test (kg)	N.A.
Inflation tyre pressure before conditioning(kpa)	N.A.
Conditioning time wheel-tyre assembly(hour)	N.A.
Readjusted tyre pressure after conditioning (kpa)	N.A.
Test wheel diameter (m)	N.A.
Temperature (°C)	N.A.

##### Test cycle

Step	Duration (min)	Speed (km/h)
1	N.A	N.A
2	N.A	N.A
3	N.A	N.A
4	N.A	N.A
TOTAL	N.A	

- \* THE PRESENTED RESULTS REFER ONLY TO THE TESTED SAMPLE
- \* THE PARTIAL REPRODUCTION OF THIS REPORT WITHOUT THE PERMISSION OF IDIADA IS COMPLETELY FORBIDDEN
- \* MEASUREMENT UNCERTAINTY OF THE RESULTS HAS BEEN CALCULATED BY THE LABORATORY.
- \* THE DECISION RULE USED, ACCORDING TO THE ILAC-G8 STANDARD, WAS THE BINARY STATEMENT FOR SIMPLE ACCEPTANCE.

### 3.2.2 Tyres with speed category symbol P and below:

- Attachment 1: Test result of Nominal Load/Speed Combination (160/157J)
- Attachment 2: Test result of Additional Load/Speed Combination (157/154K)

#### Attachment 1: Test result of Nominal Load/Speed Combination (160/157J)

##### Test Conditions

Speed category	J
Load capacity index	160
Maximum velocity (km/h)	100
Test drum speed during the test (km/h)	48
Load of axle during the test (kg) (100%)	4500
Inflation tyre pressure before conditioning(kpa)	950
Conditioning time wheel-tyre assembly(hour)	3
Readjusted tyre pressure after conditioning (kpa)	950
Test wheel diameter (m)	1.7
Temperature (°C)	20-30

##### Test cycle

Step	Duration (h)	Load (kg)	
1	7	66%	2970
2	16	84%	3780
3	24	101%	4545
TOTAL	47		

### 3.2.3 Tyre measurement

Outer diameter measurement at the start of test	N.A.
Outer diameter measurement at the end of test	N.A.
Percentage of the change in outer diameter measurement (%)	N.A.

- 
- \* THE PRESENTED RESULTS REFER ONLY TO THE TESTED SAMPLE
  - \* THE PARTIAL REPRODUCTION OF THIS REPORT WITHOUT THE PERMISSION OF IDIADA IS COMPLETELY FORBIDDEN
  - \* MEASUREMENT UNCERTAINTY OF THE RESULTS HAS BEEN CALCULATED BY THE LABORATORY.
  - \* THE DECISION RULE USED, ACCORDING TO THE ILAC-G8 STANDARD, WAS THE BINARY STATEMENT FOR SIMPLE ACCEPTANCE.



## Attachment 2: Test result of Additional Load/Speed Combination (157/154K)

### Test Conditions

Speed category	K
Load capacity index	157
Maximum velocity (km/h)	110
Test drum speed during the test (km/h)	56
Load of axle during the test (kg) (100%)	4125
Inflation tyre pressure before conditioning(kpa)	950
Conditioning time wheel-tyre assembly(hour)	3
Readjusted tyre pressure after conditioning (kpa)	950
Test wheel diameter (m)	1.7
Temperature (°C)	20-30

### Test cycle

Step	Duration (h)	Load (kg)	
1	7	66%	2722.5
2	16	84%	3465
3	24	101%	4166.25
TOTAL	47		

### 3.2.4 Tyre measurement

Outer diameter measurement at the start of test	N.A.
Outer diameter measurement at the end of test	N.A.
Percentage of the change in outer diameter measurement (%)	N.A.

- \* THE PRESENTED RESULTS REFER ONLY TO THE TESTED SAMPLE
- \* THE PARTIAL REPRODUCTION OF THIS REPORT WITHOUT THE PERMISSION OF IDIADA IS COMPLETELY FORBIDDEN
- \* MEASUREMENT UNCERTAINTY OF THE RESULTS HAS BEEN CALCULATED BY THE LABORATORY.
- \* THE DECISION RULE USED, ACCORDING TO THE ILAC-G8 STANDARD, WAS THE BINARY STATEMENT FOR SIMPLE ACCEPTANCE.

### 3.3. Test results

3.3.1. The outer diameter of the tyre, measured six hours after the load/speed endurance test, must not differ by more than  $\pm 3.5\%$  from the outer diameter as measured before the test.

~~FULFILLS / DOES NOT FULFIL~~

3.3.2. Once passed the load/speed endurance test, the tyre must not exhibit any tread separation, ply separation, cord separation, chunking or broken cords.

~~FULFILLS / DOES NOT FULFIL~~

Test Place : WANLI Testing Center (Hefei, China)  
Test Date : 08/01/2023-10/01/2023

袁柱

Zhu Yuan  
HOMOLOGATION ENGINEER

- 
- \* THE PRESENTED RESULTS REFER ONLY TO THE TESTED SAMPLE
  - \* THE PARTIAL REPRODUCTION OF THIS REPORT WITHOUT THE PERMISSION OF IDIADA IS COMPLETELY FORBIDDEN
  - \* MEASUREMENT UNCERTAINTY OF THE RESULTS HAS BEEN CALCULATED BY THE LABORATORY.
  - \* THE DECISION RULE USED, ACCORDING TO THE ILAC-G8 STANDARD, WAS THE BINARY STATEMENT FOR SIMPLE ACCEPTANCE.