

## ROAD MARKING MATERIALS

(Durability against abrasion: EN 13197:2012+A1:2014)  
The tests marked with \* are not covered by ENAC accreditation

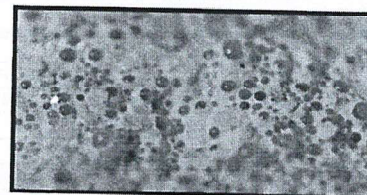
### CERTIFICATE OF DURABILITY TEST

REF.

5257/P-RR-II

Client: **SOOO STIM BREST**  
Katin Bor, 103  
Brest 221025 - Republic of Belarus

Issue date: 20-04-2021



#### 1.- TESTED ROAD MARKING SYSTEM

##### A) INFORMATION PROVIDED BY THE CUSTOMER

MATERIALS IDENTIFICATION, TRADE MARK NAME AND TYPE OF APPLICATION		MANUFACTURER(S)	Thickness (µm)	Dosage (g/m²)
Nature:	White acrylic paint	SOOO STIM BREST	500	800
Trade mark¹:	AK-511 SPRINTER			
Applied by:	Spray			
Nature:	Glass beads and antiskid aggregates	SOOO STEKLOSFERA		450
Trade mark:	OAFG 125-600			
Applied by:	Drop-on			
Certificate of Confor.				
TYPE OF MATERIAL:		White acrylic paint without premix glass beads applied by spray and with a mixture of drop-on glass beads and antiskid aggregates.		
CHARACTERISTIC OF THE ROAD MARKING:		(in accordance with EN 6836:2018)		
		Not structured		

1) The characteristics of identification of the material can be obtained from the own manufacturer or in this laboratory with his authorization.

##### B) TEST RESULTS: on roughness (in accordance with EN 13197:2012+A1:2014)

RG2

REQUIREMENTS OF THE ROAD MARKING SYSTEM in accordance with EN 1436:2018				DURABILITY expressed in TRAFFIC CLASSES, in accordance with EN 13197:2012+A1:2014					
According to the intended use of the road marking system, not all requirements are necessary				Expressed in	P0	P4	P5	P6	P7
Night-time visibility	Coefficient of retro reflected luminance $R_L$	dry	Class (R)	R4	R3	R2	R2	R2	
		rain	Class (RR)	RR2	RR2	RR2	RR1	RR1	
		wet	Class (RW)	RW3	RW3	RW3	RW3	RW2	
Day-time visibility	Luminance coefficient in diffuse illumination $Q_d$		Class (Q)	Q5	Q5	Q4	Q4	Q4	
	or luminance factor $\beta$		Class (B)	B5	B5	B4	B4	B4	
	Chromaticity coordinates (x - y)		Pass / Not Pass	pass	pass	pass	pass	pass	
Skid resistance	SRT units		Class (S)	S4	S4	S3	S2	S3	
Type	Type road marking system		Type I / II	II					
NO PICKUP-TIME: In accordance with EN 13197:2012+A1:2014			Class (T)	T2					

The TRAFFIC CLASSES have been assigned based on the measured mean values, without considering their measurement uncertainties.

Date of start of the test: 15-03-21 Date of end of the test:

CERTIFICATE OF DURABILITY TEST	Ref.	Issue date	Laboratory Manager
This certificate is identical to the original spanish version.	5257/P-RR-II	20-04-2021	<i>Francisco J. Guerra</i>

This CERTIFICATE cannot be partially reproduced without permission of AETEC S.A.

The validity status of the certificate can be confirmed in [www.aetec.es](http://www.aetec.es)

