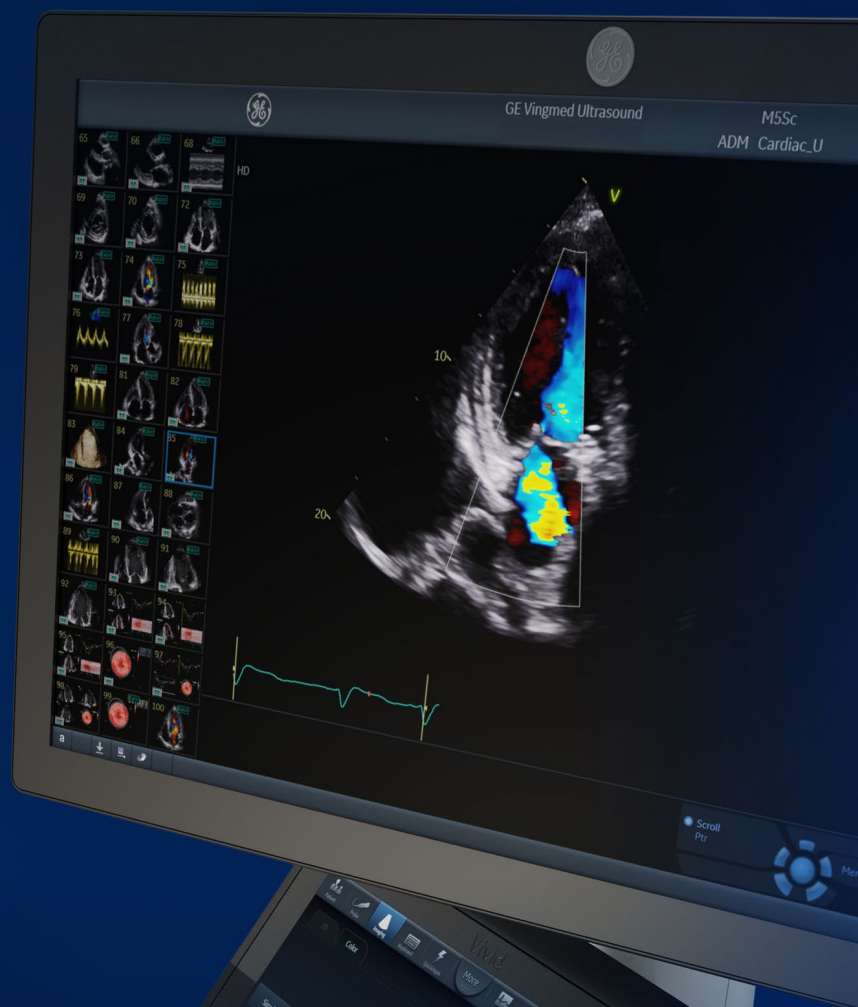




Vivid™ S70N Ultra Edition

Cardiovascular Ultrasound Probe guide

Vivid S70N Ultra Edition offers a broad range of probes to help achieve extraordinary images for cardiac, vascular, abdominal, pediatric, neonatal head, fetal heart, obstetric, gynecologic, urological, adult transcranial and small parts applications.



vivid

gehealthcare.com/vivid



	Applications	Description	Footprint	Biopsy Guide	Bandwidth	Field of View	Depth of Field
Sector							
 M5Sc-D	Cardiac, Pediatric, Abdominal, Fetal Heart, Adult Transcranial, Coronary, Stress, LVO Stress†, LVO Contrast†, OB/GYN, Vascular	XDclear™ Active Matrix Single Crystal Phased Array Transducer	18 x 27 mm	Multi-angle disposable with a reusable bracket	1.5 - 4.6 MHz	120°	36 cm
	Pediatric, Cardiac, Coronary, Neonatal Head, Abdominal, Fetal Heart	Phased Array Transducer	17 x 24 mm		2.4 - 8.0 MHz	115°	16 cm
	Pediatric, Cardiac, Coronary, Neonatal Head, Abdomen, Vascular	Phased Array Transducer	13 x 18 mm		3.0 - 12.0 MHz	105°	12 cm
Linear							
 9L-D	Peripheral Vascular, Abdomen, Contrast† (optional), Musculoskeletal, Thyroid, Small Parts, Nerves, Pediatrics	Linear Array Transducer	14 x 53 mm	Multi-angle disposable with a reusable bracket	2.4 - 10.0 MHz	45 mm	16 cm
 11L-D	Peripheral Vascular, Small Parts, Breast, Thyroid, Musculoskeletal, Nerves	Linear Array Transducer	13 x 47 mm	Multi-angle disposable with a reusable bracket	4.0 - 12.0 MHz	39 mm	8 cm
 ML6-15-D	Peripheral Vascular, Small Parts, Breast, Thyroid, Musculoskeletal	Matrix Linear Array Transducer	16 x 61 mm	Multi-angle disposable with a reusable bracket	4.5 - 15.0 MHz	50 mm	8 cm
Intraoperative							
 L8-18i-D	Musculoskeletal, Vascular, Small Parts	Intraoperative Linear Array Transducer	11 x 35 mm		5.0 - 18.0 MHz	25 mm	10 cm

† GE Healthcare's Vivid Ultra Edition S70N is designed for compatibility with commercially available contrast agents. Because the availability of these agents is subject to government regulation and approval, product features intended for use with these agents may not be commercially marketed nor made available before the contrast agent is approved for use. Advanced contrast features are only enabled on systems for delivery in countries or regions where the agents are approved for use or for investigational or research use.



C1-5-D



C1-6-D



C2-9-D



C3-10-D



iC5-9-D



P2D



P6D

Applications	Description	Footprint	Biopsy Guide	Bandwidth	Field of View	Depth of Field
Convex						
Abdomen, OB/GYN, Urology, Vascular, Fetal Heart, Contrast [†] (optional)	Curved Array Transducer	17 x 69 mm	Multi-angle disposable with a reusable bracket	1.4 - 6.0 MHz	70°	50 cm
Abdomen, Contrast [†] (optional), OB/GYN, Urology, Vascular, Fetal Heart	XDclear Single Crystal Curved Array Transducer	16 x 70 mm	Multi-angle disposable with a reusable bracket	1.4 - 6.0 MHz	70°	50 cm
Abdomen, OB/GYN, Urology, Fetal Heart	XDclear Single Crystal Curved Array Transducer	14 x 51 mm	Multi-angle disposable, with a reusable bracket	2.3 - 8.4 MHz	65°	30 cm
Neonatal Head, Vascular, Abdomen, Musculoskeletal, Nerves	XDclear Single Crystal Tightly Curved Array Transducer	12 x 22 mm		3.0 - 10.0 MHz	95°	14 cm
OB/GYN, Urology, Fetal Heart	Tightly Curved Array Transducer	17 x 21 mm	Single-angle disposable bracket	3.3 - 8.6 MHz	128°	30 cm
Doppler						
Cardiac	Pencil Transducer	16 mm diameter		2.0 MHz		
Vascular	Pencil Transducer	8 mm diameter		6.3 MHz		

[†] GE Healthcare's Vivid Ultra Edition S70N is designed for compatibility with commercially available contrast agents. Because the availability of these agents is subject to government regulation and approval, product features intended for use with these agents may not be commercially marketed nor made available before the contrast agent is approved for use. Advanced contrast features are only enabled on systems for delivery in countries or regions where the agents are approved for use or for investigational or research use.



6VT-D



6Tc-RS



9T-RS



10T-D

Applications	Description	Footprint	Biopsy Guide	Bandwidth	Field of View	Depth of Field
Transesophageal						
Cardiac, LVO Contrast,† Coronary	Active Matrix 4D Volume TEE Transducer	Tip 14 x 13 mm Length 45 mm		3.0 - 8.0 MHz	90°	20 cm
Cardiac, LVO Contrast,† Coronary	TEE Transducer	Tip 12 x 14 mm Length 45 mm		3.0 - 8.0 MHz	90°	20 cm
Pediatric Cardiac	TEE Transducer	Tip 11 x 8 mm Length 35 mm		3.0 - 10.0 MHz	90°	14 cm
Cardiac, Pediatric Cardiac	TEE Transducer	Tip 8 x 6 mm Length 16 mm		3.3 - 10.0 MHz	90°	18 cm
Intracardiac Echo (ICE)*						
Intracardiac	Catheter	8 Fr diameter		4.5 - 11.5 MHz	90°	16 cm
Intracardiac	Catheter	10 Fr diameter		4.5 - 11.5 MHz	90°	16 cm
Intracardiac	Catheter	10 Fr diameter		4.5 - 11.5 MHz	90°	16 cm
Intracardiac	Catheter	10 Fr diameter		4.5 - 11.5 MHz	90°	16 cm
Intracardiac	Catheter	8 Fr diameter		4.5 - 11.5 MHz	90°	16 cm

† GE Healthcare's Vivid Ultra Edition S70N is designed for compatibility with commercially available contrast agents. Because the availability of these agents is subject to government regulation and approval, product features intended for use with these agents may not be commercially marketed nor made available before the contrast agent is approved for use. Advanced contrast features are only enabled on systems for delivery in countries or regions where the agents are approved for use or for investigational or research use.

* ICE catheters are not available in all countries. Please contact Biosense Webster directly. ®AcuNav is a registered trademark of Siemens Healthineers.

®SOUNDSTAR is a registered trademark of Biosense Webster, Inc.

About GE Healthcare

GE Healthcare provides transformational medical technologies and services to meet the demand for increased access, enhanced quality and more affordable healthcare around the world. GE (NYSE: GE) works on things that matter - great people and technologies taking on tough challenges. From medical imaging, software & IT, patient monitoring and diagnostics to drug discovery, biopharmaceutical manufacturing technologies and performance improvement solutions, GE Healthcare helps medical professionals deliver great healthcare to their patients.

GE Healthcare
9900 Innovation Drive
Wauwatosa, WI 53226
USA
www.gehealthcare.com



©2020 General Electric Company.

General Electric Company reserves the right to make changes in specifications and features shown herein, or discontinue the product described at any time without notice or obligation. This does not constitute a representation or warranty or documentation regarding the product or service featured. The results expressed in this document may not be applicable to a particular site or installation and individual results may vary. This document and its contents are provided to you for informational purposes only and do not constitute a representation, warranty or performance guarantee from GE Healthcare.

GE, the GE Monogram, imagination at work, Vivid, and XDclear are trademarks of General Electric Company.

All third party trademarks are the property of their respective owners.

GE Medical Systems Ultrasound & Primary Care Diagnostics, LLC, a General Electric Company, doing business as GE Healthcare.

Ultra Edition is not a product name, it refers to the 2020 release of the Vivid portfolio