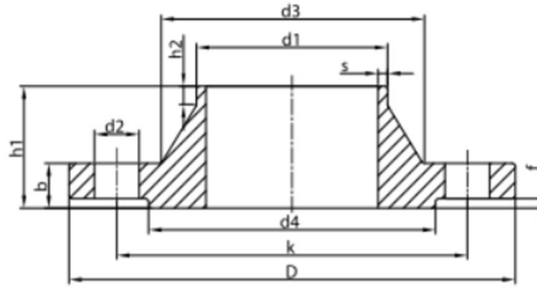


Standard: DIN 2632  
 Pressure Rating: PN10  
 Certifications: TSE / CE / ISO 9001:2015



## DIMENSIONS

Size (DN)	Flange Dimensions					Neck				Raised Face		Bolt			Weight kg/pcs
	d1	k	D	b	h1	d3	s	r	h2	d4	f	d2	m	n	
DN15	21.3	65	95	14	35	32	2	4	6	45	2	14	M12	4	0.67
DN20	26.9	75	105	16	38	40	2.3	4	6	58	2	14	M12	4	0.97
DN25	33.7	85	115	16	38	45	2.6	4	6	68	2	14	M12	4	1.16
DN32	42.4	100	140	16	40	56	2.6	6	6	78	2	18	M16	4	1.68
DN40	48.3	110	150	16	42	64	2.6	6	7	88	3	18	M16	4	1.88
DN50	60.3	125	165	18	45	75	2.9	6	8	102	3	18	M16	4	2.54
DN65	76.1	145	185	18	45	90	2.9	6	10	122	3	18	M16	8	2.99
DN80	88.9	160	200	20	50	105	3.2	8	10	138	3	18	M16	8	3.93
DN100	114.3	180	220	20	52	131	3.6	8	12	158	3	18	M16	8	4.57
DN125	139.7	210	250	22	55	156	4	8	12	188	3	18	M16	8	6.25
DN150	168.3	240	285	22	55	184	4.5	8	12	212	3	22	M20	8	7.62
DN200	219.1	295	340	24	62	235	5.9	10	16	268	3	22	M20	8	11.5
DN250	273.0	350	395	26	68	292	6.3	12	16	320	3	22	M20	12	15.5
DN300	323.9	400	445	26	68	344	7.1	12	16	370	4	22	M20	12	18.2
DN350	355.6	460	505	26	68	385	7.1	12	16	430	4	22	M20	16	24.8
DN400	406.4	515	565	26	72	440	7.1	12	16	482	4	26	M24	16	30.2
DN450	457	565	615	26	74	500	7.1	12	16	532	4	26	M24	20	34.9
DN500	508	620	670	28	75	542	7.1	12	16	585	4	26	M24	20	40.1
DN600	610	725	780	28	80	642	7.1	12	18	685	5	30	M27	20	48.8
DN700	711	840	895	30	80	745	8	12	18	800	5	30	M27	24	65.1
DN800	813	950	1015	32	90	850	8	12	18	905	5	33	M30	24	87.3
DN900	914	1050	1115	34	95	950	10	12	20	1005	5	33	M30	28	106.7
DN1000	1016	1160	1230	34	95	1052	10	16	20	1110	5	36	M33	28	123.3
DN1100	1116	1270	1340	35	105	1155	11	16	20	1218	5	36	M33	32	155
DN1200	1220	1380	1455	38	115	1255	11	16	25	1330	5	39	M36	32	185
DN1300	1320	1490	1575	38	118	1358	12	16	25	1440	5	42	M39	32	219.8
DN1400	1420	1590	1675	42	120	1460	12	16	25	1535	5	42	M39	36	253.9
DN1500	1524	1700	1785	44	125	1564	13	16	25	1648	5	42	M39	36	296.1
DN1600	1620	1820	1915	45	130	1665	14	16	25	1760	5	48	M45	40	365.5
DN1800	1820	2020	2115	50	140	1868	15	16	30	1960	5	48	M45	44	453.1
DN2000	2020	2230	2325	54	150	2072	16	16	30	2170	5	48	M45	48	568.2
DN2200	2220	2440	2550	58	160	2275	18	18	35	2370	5	52	M52	56	720.7

Notes: All dimensions are in mm.