

EU Type Examination Certificate Number: 0120/SGS0690

Hexing Technologies Europe S.R.L.

Sat Giarmata
Comuna Giarmata
DJ 691 KM 8 + 775 M DREAPTA
Judet Timis
Romania

Instrument Identification:
HXE310 EU

Polyphase, Import/Export (kWh) Smart, Electricity Meter

Instrument Traceable Number
0120/SGS0690

has been assessed and certified as meeting the requirements of

EU Directive 2014/32/EU on Measuring Instruments Annex II, Module B

It is certified that the manufacturer's technical design and specimen for the above instrument has been examined and, based on the evidence submitted, it is considered that the instrument conforms to the requirements of Annex V of EU Directive 2014/32/EU

This certificate must be used in conjunction with a certificate covering the product verification as required in Annex II, Module D or Annex II, Module F

This certificate is valid for 10 years from 19 March 2024 until 18 March 2034
Issue 1

Certification is based on report number(s):
SHES240100212601 Dated 4th March 2024, SHES240100212602 Dated 4th March 2024
EMA323768/1

Authorised Signature



Mikko Välimäki

SGS Fimko OY, Notified Body 0598
Takomotie 8, FI-00380 Helsinki, Finland
t +358 9 6963 61 www.sgs.fi





EU-Type Examination Certificate Number:

0120/SGS0690

Issue Number: 1

Dated: 19th March 2024**1. Technical Data**

Manufacturer	Hexing Technologies Europe S.R.L.
Meter Type	HXE310 _{EU}
Voltage Rating (<i>Un</i>)	3*220/380V~3*240/415V
Current Rating (<i>I_{min}</i> – <i>I_{ref}</i> (<i>I_{max}</i>))	0.25-5(60)A, 0.5-10(60)A, 0.25-5(80)A, 0.5-10(80)A, 0.25-5(100)A, 0.5-10(100)A
Frequency (<i>Fn</i>)	50Hz
Active Accuracy Class (<i>kWh</i>)	B (kWh)
Type of circuit	3p4w
Temperature Range	-40°C to +70°C
Software Version No.	310_V31
CRC Checksum	84C4A711
Identification Location	LCD
Bill of Materials No.	HXE310 EU BOM-01
IP Rating	IP54
Insulation Protective Class	Class II
LED Pulse Constant	1000 imp/kWh
Impulse Voltage Rating	6kV
AC Voltage Rating	4kV
Main Cover Sealing Type	Wire & Crimp
Integrity of meter	Inaccessible without breaking seals
Intended Location of the Meter	Indoor
Type of Register	LCD
Terminal Arrangement(s)	DIN
Location of Manufacturers Address	Associated Documents

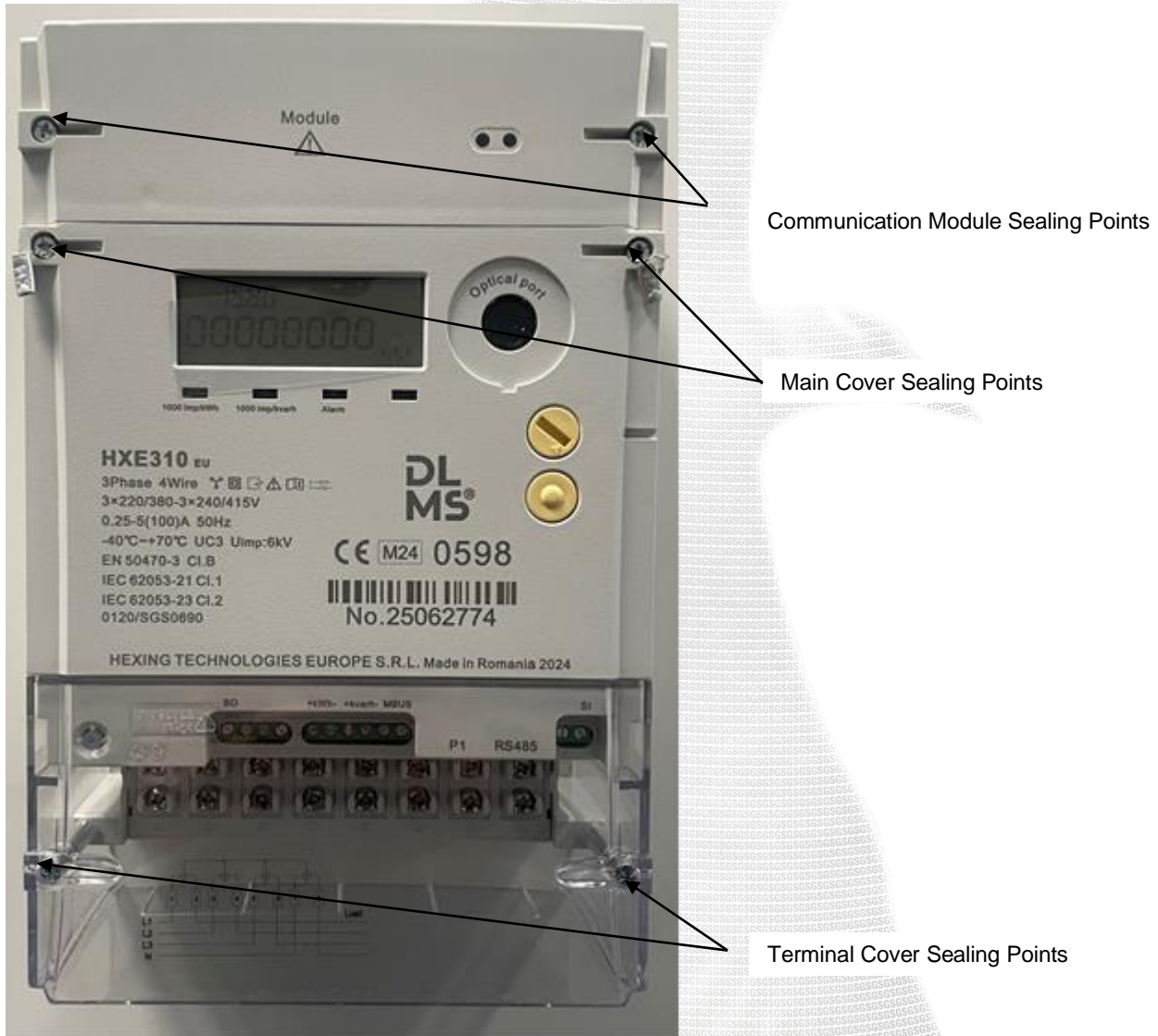
EU-Type Examination Certificate Number:

0120/SGS0690

Issue Number: 1

Dated: 19th March 2024

2. Photograph of Meter and Sealing Plan



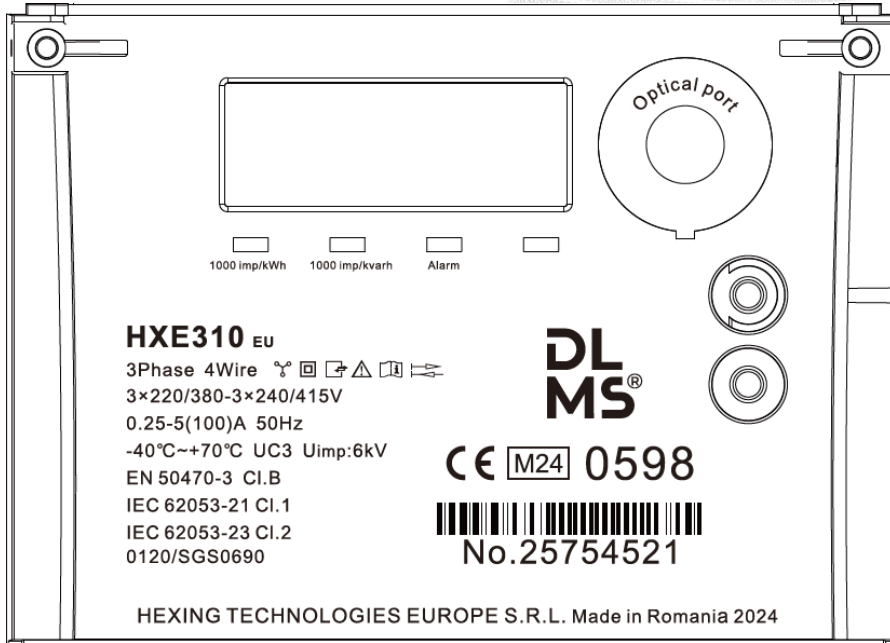
EU-Type Examination Certificate Number:

0120/SGS0690

Issue Number: 1

Dated: 19th March 2024

3. Examples of Nameplates





EU-Type Examination Certificate Number:

0120/SGS0690

Issue Number: 1

Dated: 19th March 2024

4. Calculation of the composite error/ MPE

During the type approval examination the influence factors for temperature, frequency and voltage are determined per load point. The table below represents the sum of the square values per load, determined via the following formula:-

$$\delta e(T, U, f) = \sqrt{(\delta e^2(T, I, \cos\phi) + \delta e^2(U, I, \cos\phi) + \delta e^2(f, I, \cos\phi))}$$

where

- $\delta e(T, I, \cos\phi)$ = Additional error due to variation of the temperature at the same load
- $\delta e(U, I, \cos\phi)$ = Additional error due to variation of the voltage at the same load
- $\delta e(f, I, \cos\phi)$ = Additional error due to variation of the frequency at the same load

		Influence Factors for temperature, frequency and voltage							
Current	PF Cos	-40°C	-25°C	-10°C	5°C	30°C	40°C	55°C	70°C
Imin	1.0	0.16	0.12	0.09	0.08	0.09	0.09	0.09	0.09
Itr	1.0	0.19	0.14	0.08	0.06	0.03	0.03	0.06	0.08
10ltr	1.0	0.16	0.13	0.08	0.05	0.04	0.04	0.05	0.06
Imax	1.0	0.18	0.16	0.11	0.08	0.05	0.05	0.07	0.09
Itr	0.5ind	0.19	0.14	0.13	0.12	0.14	0.13	0.12	0.12
10ltr	0.5ind	0.18	0.16	0.10	0.07	0.06	0.06	0.06	0.07
Imax	0.5ind	0.51	0.51	0.47	0.45	0.42	0.42	0.43	0.45
Itr	0.8cap	0.19	0.14	0.09	0.06	0.02	0.02	0.05	0.08
10ltr	0.8cap	0.18	0.13	0.07	0.05	0.02	0.02	0.05	0.06
Imax	0.8cap	0.15	0.13	0.08	0.06	0.05	0.05	0.05	0.06
L1						0.00	0.00	0.00	0.00
Itr	1.0	0.27	0.19	0.11	0.07	0.01	0.01	0.03	0.06
10ltr	1.0	0.27	0.18	0.11	0.07	0.02	0.01	0.03	0.05
Imax	1.0	0.28	0.20	0.14	0.10	0.05	0.05	0.07	0.08
Itr	0.5ind	0.29	0.19	0.11	0.07	0.08	0.08	0.07	0.07
10ltr	0.5ind	0.32	0.23	0.14	0.10	0.03	0.03	0.03	0.04
Imax	0.5ind	0.73	0.66	0.61	0.58	0.55	0.55	0.57	0.57
L2									
Itr	1.0	0.17	0.09	0.05	0.05	0.05	0.05	0.08	0.10
10ltr	1.0	0.17	0.09	0.06	0.04	0.04	0.05	0.07	0.11
Imax	1.0	0.16	0.08	0.05	0.05	0.04	0.05	0.07	0.09
Itr	0.5ind	0.16	0.12	0.11	0.13	0.12	0.11	0.11	0.13
10ltr	0.5ind	0.18	0.12	0.10	0.10	0.10	0.10	0.10	0.12
Imax	0.5ind	0.45	0.40	0.37	0.41	0.34	0.35	0.37	0.39
L3									
Itr	1.0	0.14	0.09	0.07	0.06	0.06	0.06	0.08	0.10
10ltr	1.0	0.14	0.10	0.06	0.06	0.06	0.06	0.07	0.10
Imax	1.0	0.13	0.08	0.04	0.02	0.02	0.03	0.05	0.07
Itr	0.5ind	0.21	0.21	0.23	0.25	0.24	0.23	0.21	0.21
10ltr	0.5ind	0.32	0.27	0.22	0.20	0.20	0.22	0.26	0.31
Imax	0.5ind	0.39	0.34	0.31	0.29	0.17	0.29	0.32	0.34



EU-Type Examination Certificate Number:

0120/SGS0690

Issue Number: 1

Dated: 19th March 2024

5. Annex of Variants

Product Variant Identification Details:


Type Designation

Description of meter

HXE 310 EU

Voltage: 3*220/380V~3*240/415V, 50Hz
Current: 0.25-5(60)A, 0.5-10(60)A, 0.25-5(80)A,
0.5-10(80)A, 0.25-5(100)A, 0.5-10(100)A
Communication: GPRS/4G, G3/Prime

Modifications to the meter(s) described according to approval No. **0120/SGS0690** must be notified to the issuing body to confirm the meter(s) continuing compliance to the relevant pattern approval standard(s).

	EU-Type Examination Certificate Number:	
	0120/SGS0690	
	Issue Number: 1	Dated: 19 th March 2024

6. Document Revision History

Issue	Date	Comments
1	19/03/2024	Initial Issue

This document is issued by the Company subject to its General Conditions for Certification Services, available on request or accessible at <http://www.sgs.com/en/Terms-and-Conditions.aspx>.

Attention is drawn to the limitation of liability, indemnification and jurisdiction issues defined therein. Any holder of this document is advised that information contained hereon reflects the Company's findings at the time of its intervention only and within the limits of Client's instructions, if any. The Company's sole responsibility is to its Client and this document does not exonerate parties to a transaction from exercising all their rights and obligations under the transaction documents. This document cannot be reproduced except in full, without prior written approval of the Company. Any unauthorized alteration, forgery or falsification of the content or appearance of this document is unlawful and offenders may be prosecuted to the fullest extent of the law.

Unless otherwise stated the results shown in this test report refer only to the sample(s) tested *and such sample(s) are retained for 28 days only.*

END OF CERTIFICATE