

22.09.2022

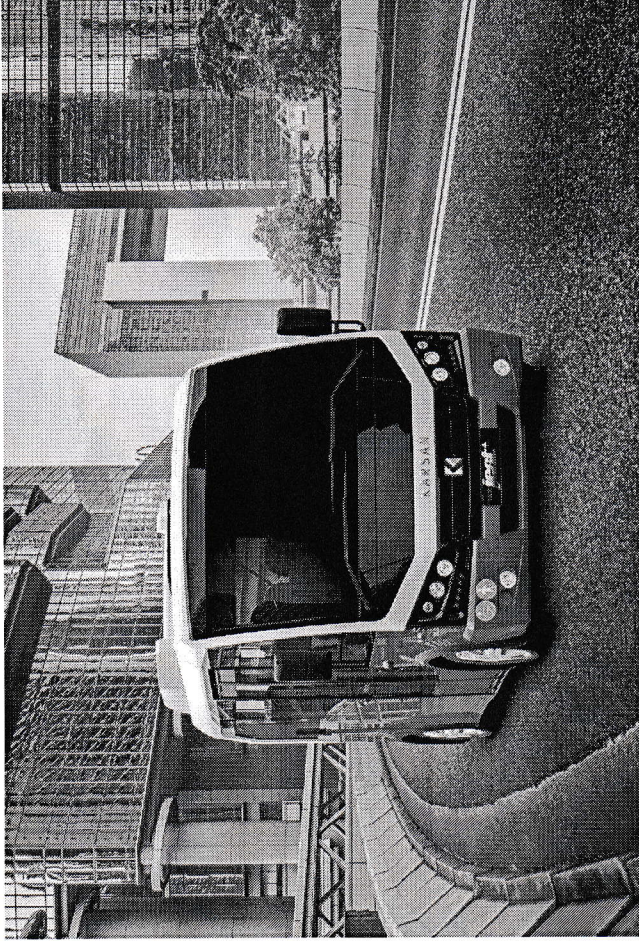
Lot 1

Supply of the buses and related equipment and services for the creation of smart urban transportation service in Edinet municipality

Commercial offer with technical description

Busses for public transportation

KARSAN JEST PLUS



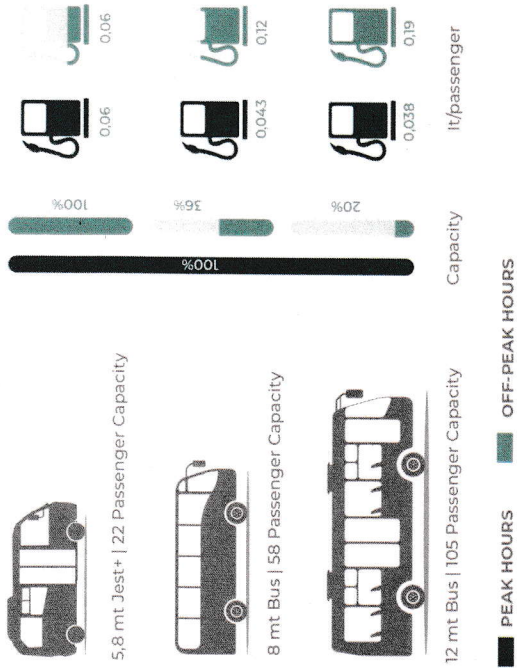
Warranty KARSAN:	3 years
Terms of delivery:	150 working days
Availability of offer:	90 days

PRICE PER UNIT KARSAN JEST PLUS: 67,220.00 € DDP Edinet



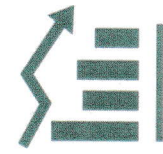
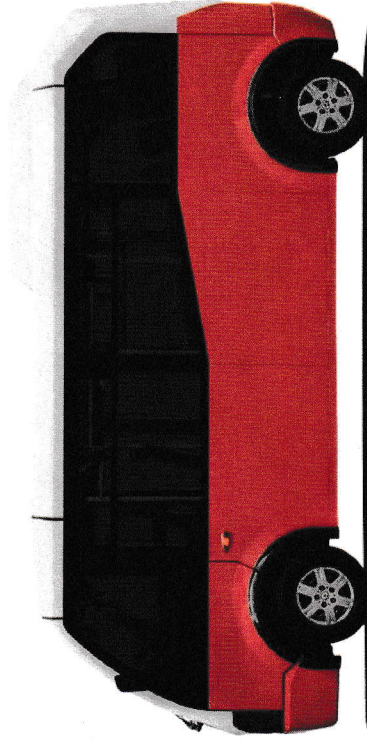
Less Fuel Cost

Jest+ is very effective in terms of fuel consumption. In addition, you will save up to 70% fuel cost per passenger with Jest+ during off-peak hours by eliminating redundant capacity of big buses.



Less Maintenance Cost

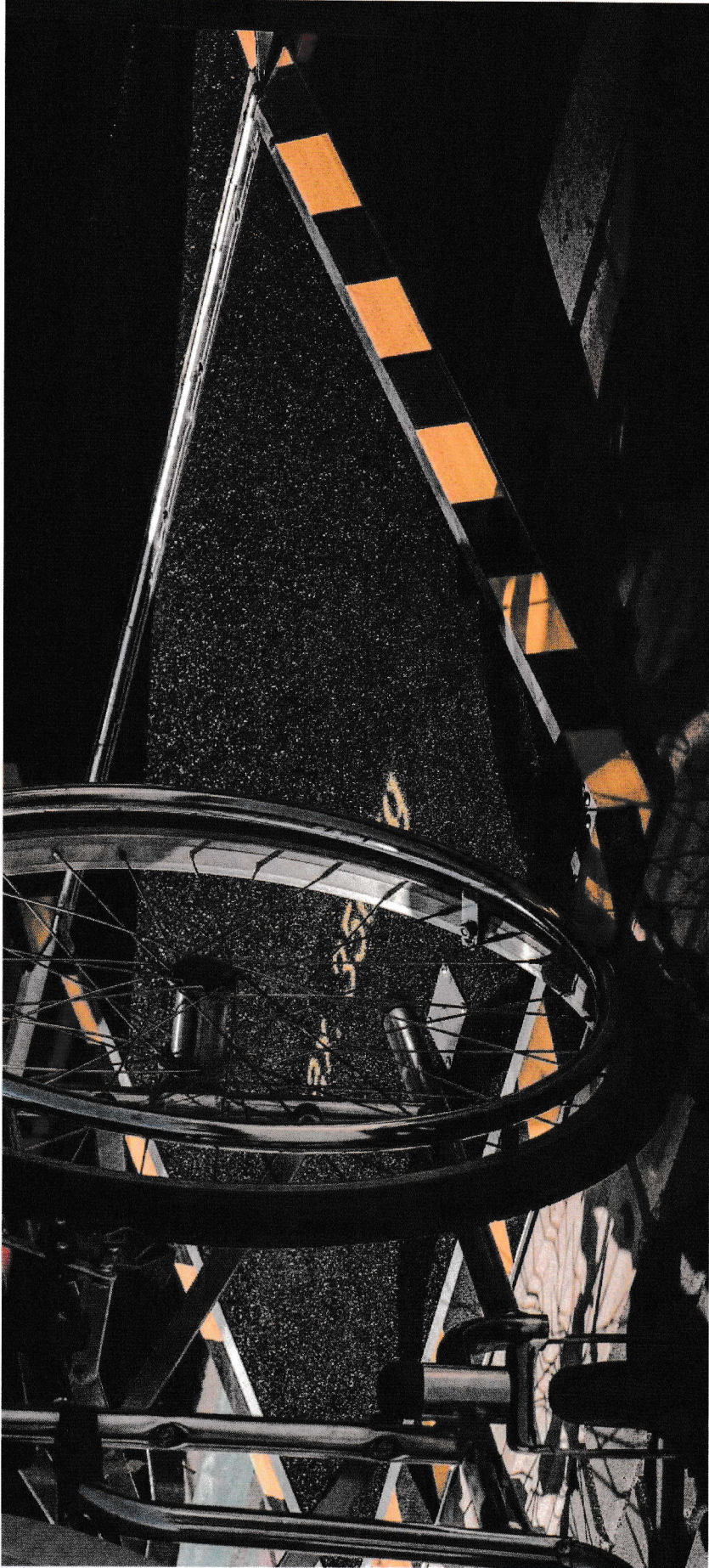
Jest+ is a budget friendly solution with low maintenance costs. Moreover, by adding Jest+ to your fleet, you will use your big buses rarely, so they will also be sent to maintenance less and their lifetime will increase.



Less Investment Cost

With lower acquisition cost compared to big buses, Jest+ proves that it's a profitable investment from the first day.

*With the assumption that all passengers get on the bus at the first stop and get off on the last. All lines are 10 kms.



+ Wheelchair Access Ramp

With the easily foldable ramp integrated to low floor, Jest+ provides smooth access and makes getting on & off very practical.

+ Wide Door Clearance

Jest+ prevents time loss with double swing doors, while passengers are getting on & off.

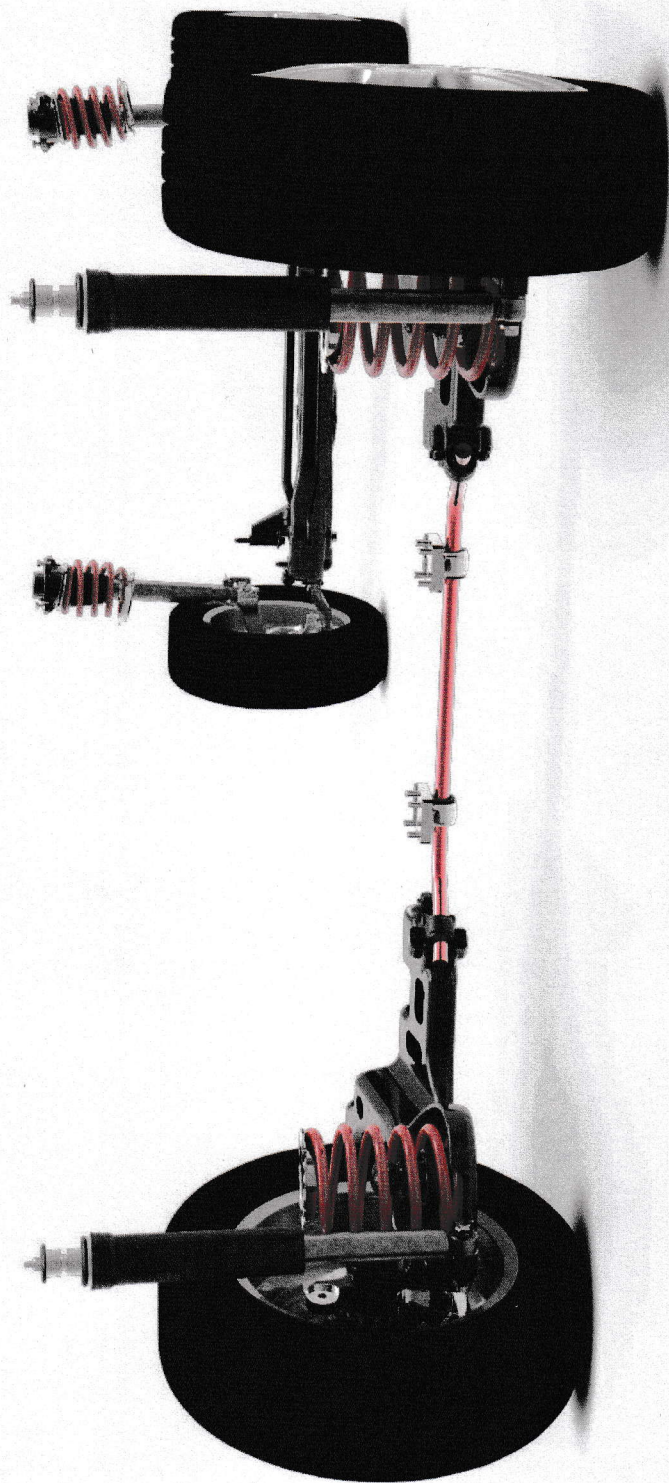
+ Original Low Floor

Getting in Jest+ is as easy as walking on the straight road. The low floor allows passengers to get in by just a half step. Thanks to these advantages, parents with strollers and the elderly get on and off Jest+ easily.

+ Cathaphoresis Coating

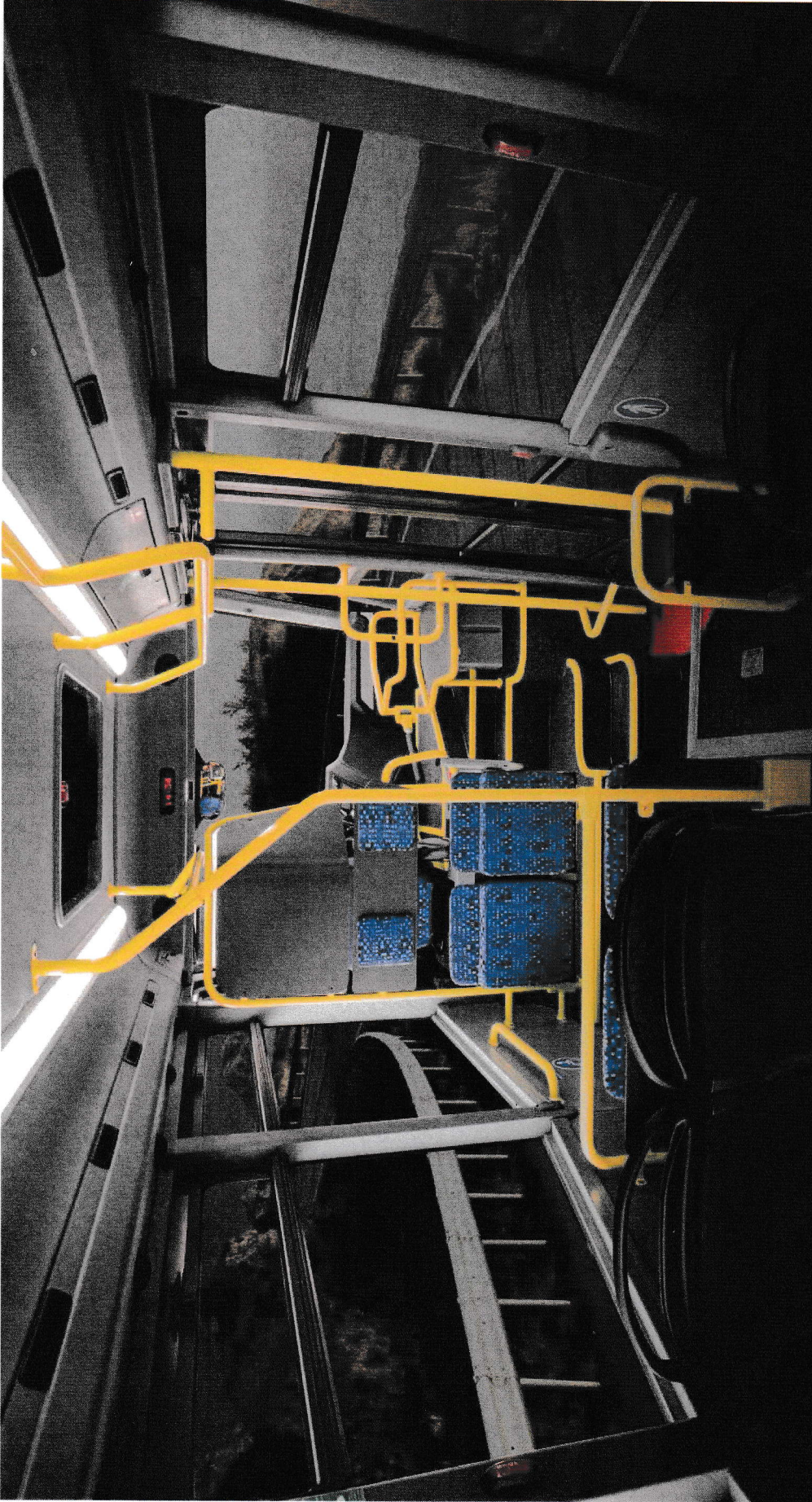
Jest+ has 10-years anti-corrosion warranty. Cathaphoresis coating used in Jest+ chassis provides advanced corrosion resistance while preventing rust formation.





+ 4 Wheel Independent Suspension

Until Jest+, passenger and driver comfort has not been expected in public transport. With 4-wheel independent suspension, Jest+ reduces road vibration and increases passenger comfort like an automobile.



+ LED Light Path

Jest+ exceeds your expectations with LED lighting that enhances visibility and safety, while giving an aesthetic appearance to the interior. For passengers, traveling with Jest+ is very pleasurable.

+ Enhanced Roof Isolation

Every detail is considered in Jest+, thus passengers are kept away from traffic noise and enjoy their rides.

+ Front Looking Passenger Seats

Jest+ offers plastic and plastic with pad seat options to satisfy your comfort standards. Front looking seats are ideally positioned for passengers. This position allows them to feel more comfortable during their rides.

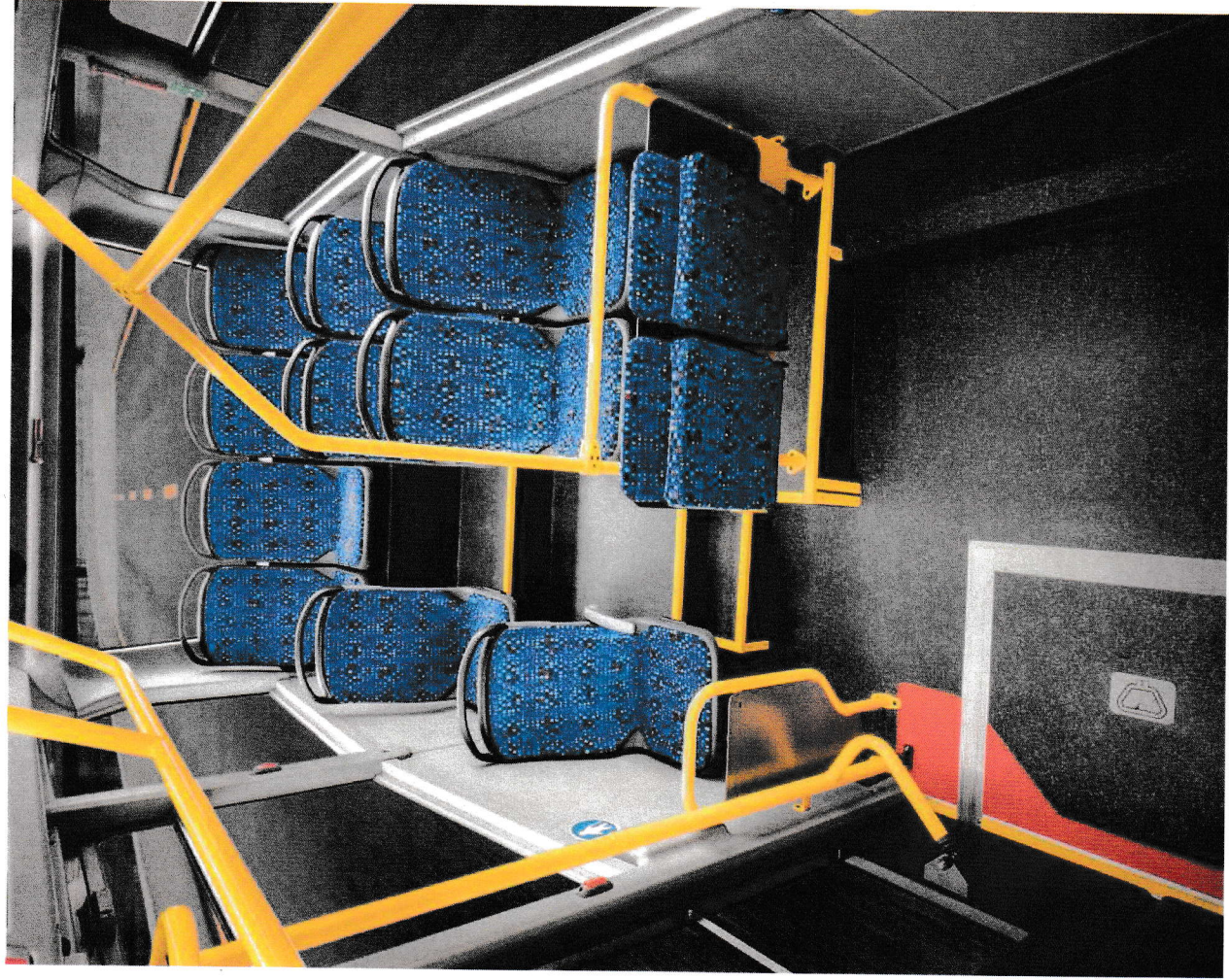
+ Passenger Seat Alternatives

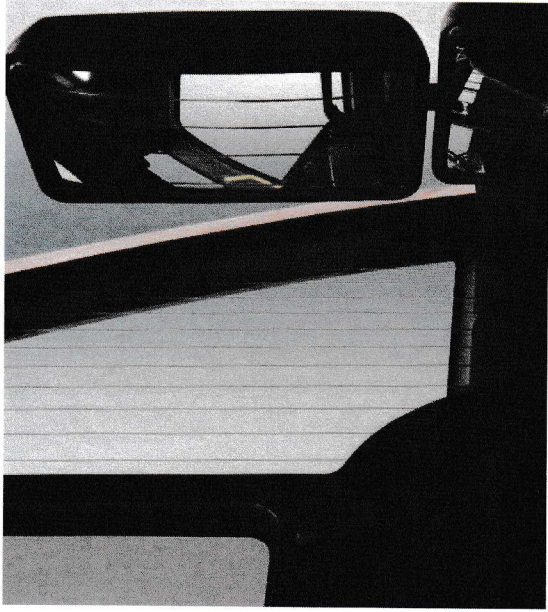
With passenger seat layout options provided with Jest+ and Jestronic, the most appropriate seating layout can be selected and vehicle's interior becomes more ergonomic.

- 9 Fixed Seats + 4 Folding Seats
- 10 Fixed Seats + 4 Folding Seats

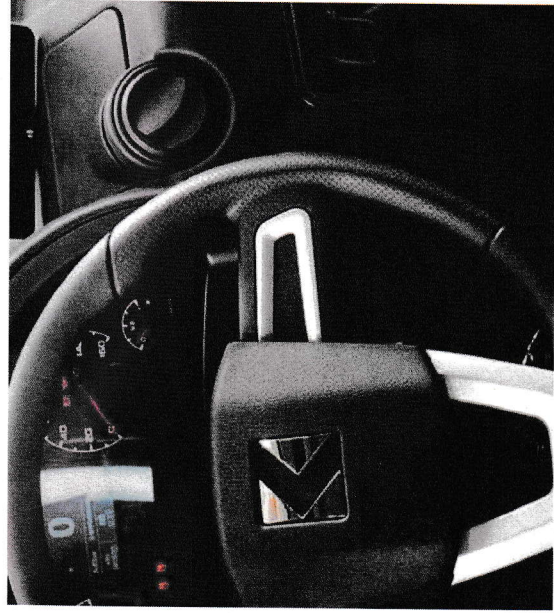
+ Driver Seat

The driver is always comfortable thanks to the 4-way adjustable driver seat with armrest.

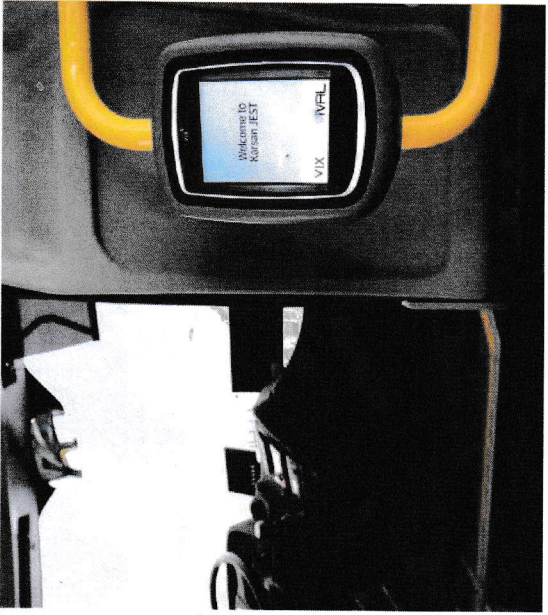




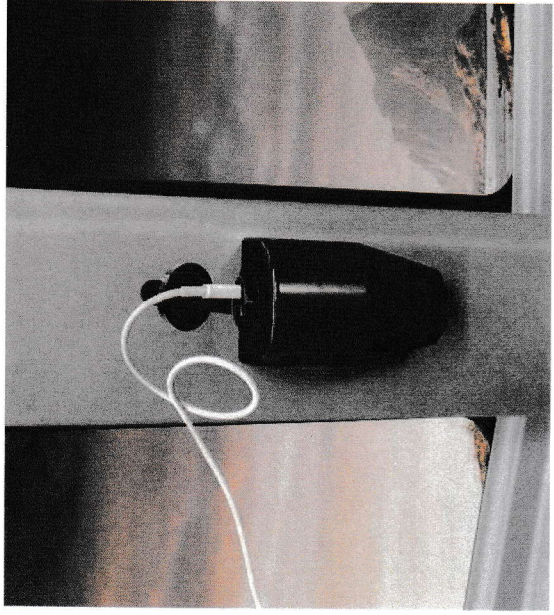
+ Electric Heated Mirrors & Sidewalk Mirrors



+ Tiltable & Telescopic Electrohydraulic Steering Wheel



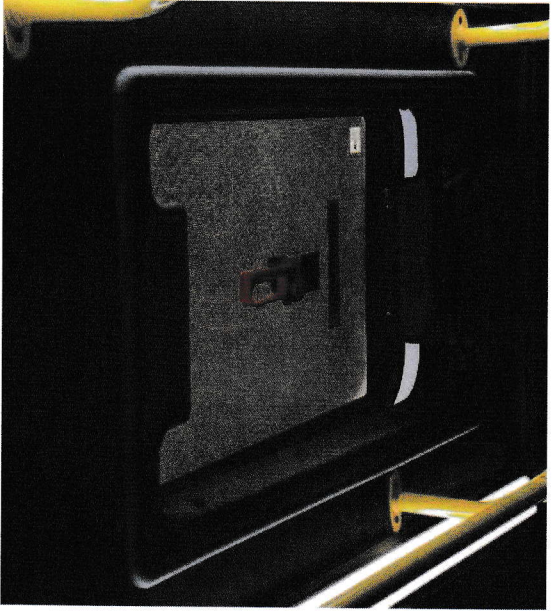
+ Validator Preparation



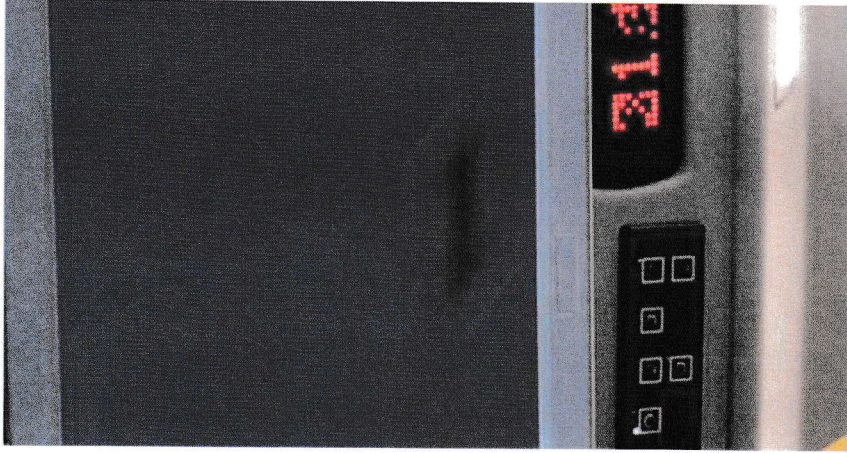
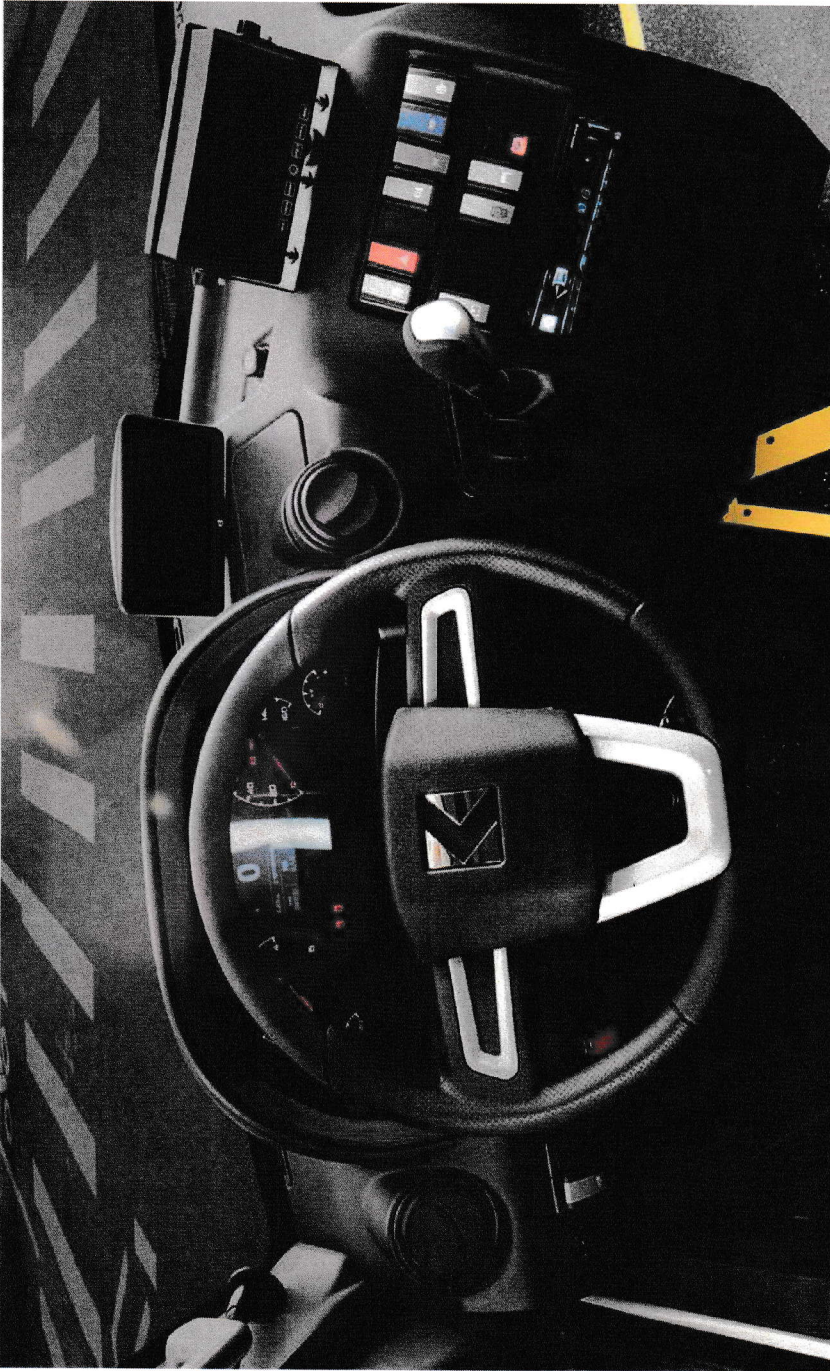
+ Passenger USB Ports



+ Aluminum Alloy Wheels



+ Electric Roof Hatch (Optional)



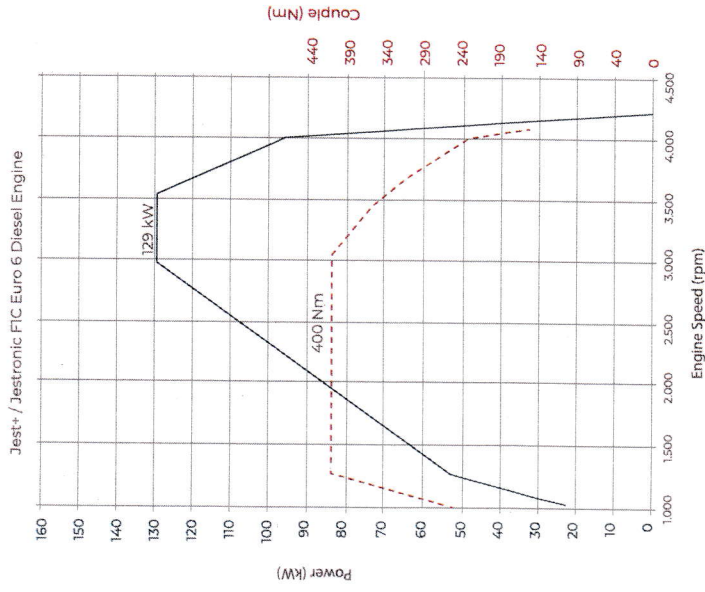
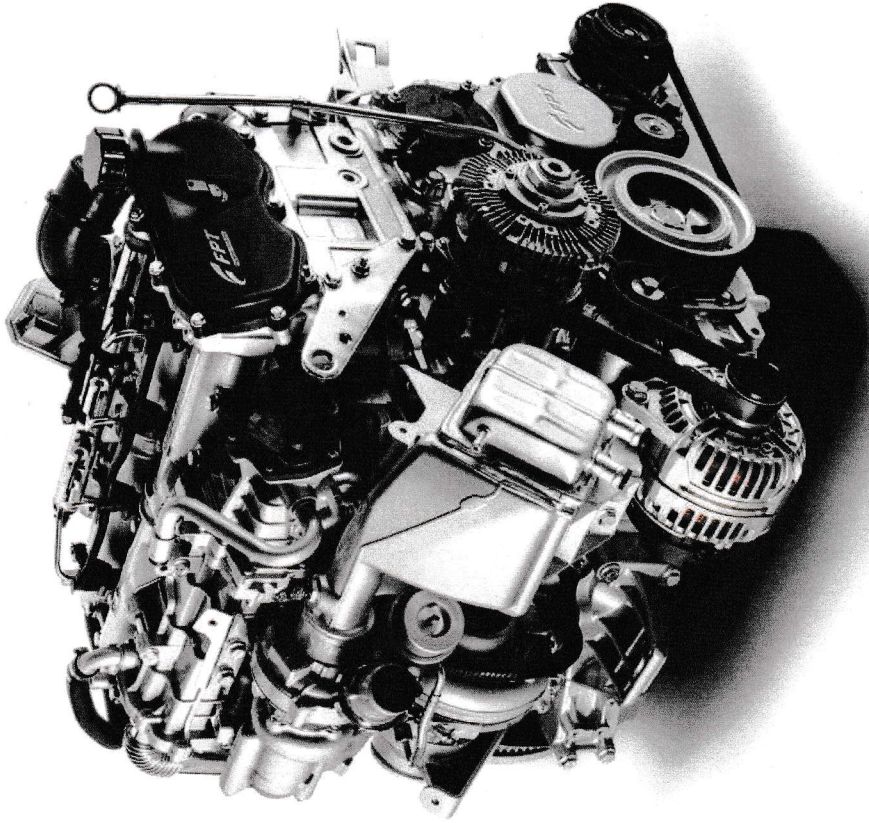
+ Multimedia System

All features for an appealing public transport vehicle are gathered in Jest+. Technologies which ease the driving and transform the ride into pleasure, are always at your service.

- Rear View Camera and 7" LCD Screen
- Camera Monitoring and ITB Storage + Wi-Fi
- Radio + USB Port + SD Card + AUX
- 4 Speakers

+ Powerful Air Conditioner

Too cold or too hot, no weather conditions can affect the passengers. Also with the additional standard driver A/C in Jest+, you can focus on driving.



+ High Performance Engine

Now is the time to rule the roads. The engine of Jest+ with high torque and acceleration, enables a perfect driving performance together with silence and robustness. 3.0 liter diesel engine, climbs easily to steep ramps while maintaining low fuel consumption levels. With 129 kW (175 HP) power and 400 Nm torque, it is durable in continuous use. Although it has superior performance in all conditions, exhaust emissions are lowered to satisfy Euro 6 levels to protect nature with the Ad-Blue additive.



Mechanic warranty is limited to 2 years or 200,000 km (whichever finishes first).

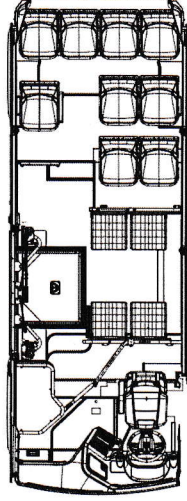
TECHNICAL SPECIFICATIONS

VEHICLE TYPE	Jest+	Jestronic*
Vehicle Category & Class	M2 Category, Class A	
POWERTRAIN SYSTEM		
Drive Type	Front Wheel Drive (FWD), 4x2	
Engine Type	FPT FIC - Turbo Diesel Intercooler	
Emission Level	Euro VI	
Number of Cylinders	4	
Engine Volume (cc)	2.998	
Max. Power (kW&hp)	129 & 175	
Max. Torque (Nm)	400	
Transmission	Manual Gearbox - 6 Speed	Automated Gearbox - 6 Speed
PERFORMANCE		
Top Speed (km/h)	100 (with Speed Limiter)	
Turning Radius (Kerb to kerb) (mm)	6.983	
SUSPENSION		
Suspension System	4WIS: Four-Wheel-Independent-Suspension	
Front & Rear Axle	Independent: Helical Springs + Telescopic Shock Absorbers + Anti-Roll Bar	
BRAKE SYSTEM		
Front & Rear Brakes	Hydraulic & Disc	
CAPACITY		
Fuel Tank Capacity (lit)	80	
Ad-Blue Tank Capacity (lit)	25	
DIMENSIONS		
Overall Length (mm)	5.845	
Overall Width (mm)	2.055	
Overall Height (mm)	2.800 (with A/C)	
Interior Height (mm)	2.185 (Maximum)	
Front Overhang (mm)	1.200	
Rear Overhang (mm)	895	
Wheelbase (mm)	3.750	
Door clearance (mm)	1.200	
TIRES & RIMS		
Tire & Rim Sizes	215/75 R16C & 6J x 16	
BODY		
Body Type	Monocoque Space Frame	
Corrosion Resistance	Cathaphoresis Coating & Under Coating	
ELECTRICAL SYSTEM		
Battery (Volt & Ah)	12V - 105A	
Alternators (Volt & A)	14V - 210A	

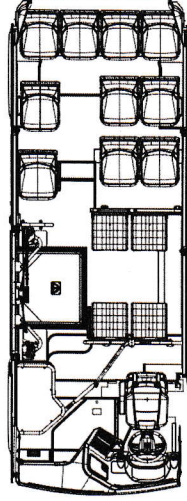
PASSENGER SEAT LAYOUTS

	Class A
9 Fixed Seats + 4 Folding Seats	X
10 Fixed Seats + 4 Folding Seats	X
Plastic Type Seat	X
Plastic Type Seat with Pad	X

Class A buses are limited by 22 passenger capacity including standing passengers (ECE-R107)



9 Fixed Seats + 4 Folding Seats



10 Fixed Seats + 4 Folding Seats

* Automatic transmission delivery period is 6 months.

FEATURES

DESIGN

Exterior Design

	Line	Highline
High Beam & Low Beam Lights	S	S
LED DRL (Daytime Running Lamps)	S	S
Front Fog Lamps	O	O
Rear Fog Lamps	S	S
16" Alloy Wheels	O	S
Tinted Side Glasses & Transom Windows	S	-
Overtinted Side Glasses & Transom Windows	O	S
Sliding Side Windows*	O	O
Outward Swing Passenger Door	S	S
Manual Access Ramp	S	S
Body Colored Bumpers	S	S
Spare Tire	S	S

Passenger Compartment

Yellow Handrails	S	S
Stainless Steel Handrails	O	O
2 Stop Buttons on Handrails	S	S

TECHNOLOGY

Driver Compartment

Automatic Transmission (ELECTRONIC)	O	O
Engine Room Fire Warning System	O	O
5" Digital Cluster	S	S

Camera Systems

Camera Pack 1 (LCD on Dashboard 7", Rear View Camera)	O	O
Camera Pack 2 (DVR, 11 TB), LCD on Dashboard 7", Rear View Camera, Front, Driver, Inside, Service Door Cam)	O	O

Video & Audio Systems

Radio + USB Port + AUX	S	S
2 Speakers	S	-
4 Speakers	O	S

Electrical Systems

Battery 12V - Single	S	-
Battery 12V - Double	O	S
Additional Fuse Box	O	O

Passenger Compartment

USB on Sidewall	S	S
Internet Access Infrastructure (Wi-Fi Router)	O	O

Line Systems

Tachograph Preparation	S	-
Smart Tachograph	O	S
LED Destination Panels (Front + Side + Rear)	O	O
Roof Mounted Destination Panel (Front Only)	O	O
Ticket Validator Preparation	O	O

COMFORT

Heating & Cooling System

Roof Mounted Passenger A/C Unit 12 kW	S	S
Driver A/C Unit	S	S
Under Seat Heater	S	S
Pre-heater	O	S

Mirrors & Windows

Fixed Glass Emergency Roof	S	S
Manual Roof Hatch	O	O
Electric Roof Hatch	O	O
Electric & Heated Side Mirrors	S	S
Sidewalk Mirror On Right	S	S
Electrical Driver Window	S	S
Heated Side Glass (Front Right)	S	S
Heated Driver Side Window	O	O
Heated Windscreen	O	S
Sliding Front Right Window	O	O
Manual Sun Visor - Driver (Front)	S	S

Interior Lights

Driver Area Illumination	S	S
Passenger Door Lights	S	S
Passenger Area LED Light Path	S	S

Driver Compartment

Titilable & Telescopic Hydraulic Steering Wheel	S	S
Remote Controlled Central Locking System	S	S
Electric Park Brake	O	O
4 Way Adjustable Driver Seat	S	S
Driver Seat Arm Rest	S	S
Driver Overhead Bin	S	S
Reverse Gear Buzzer	O	O
Semi-Closed Driver Cabin (with Hand Luggage Area)	S	S

Passenger Compartment

Wheelchair Travelling Area	S	S
Plastic Passenger Seats	S	S
Plastic Passenger Seats with Pad	O	O
Billboard	S	S

SAFETY

ESP - Electronic Stability Program	S	S
EBD - Electronic Brake Force Distribution	S	S
ABS - Anti-lock Braking System	S	S
TCS - Traction Control System	S	S
DTC - Drag Torque Control	S	S
VDC - Vehicle Dynamic Control	S	S
BAS - Brake Assistant System	S	S
LDWS - Lane Departure Warning System	O	O
HSA - Hill Start Aid	S	S

* Sliding Windows can't be selected with Tinted or Overtinted Glass Color. Transparent glasses will be supplied if this option is taken.

S = Standard
O = Optional