
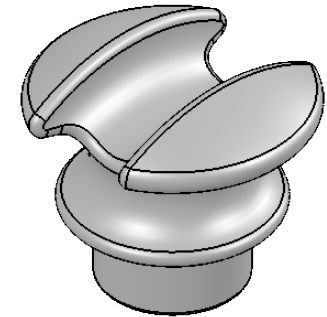
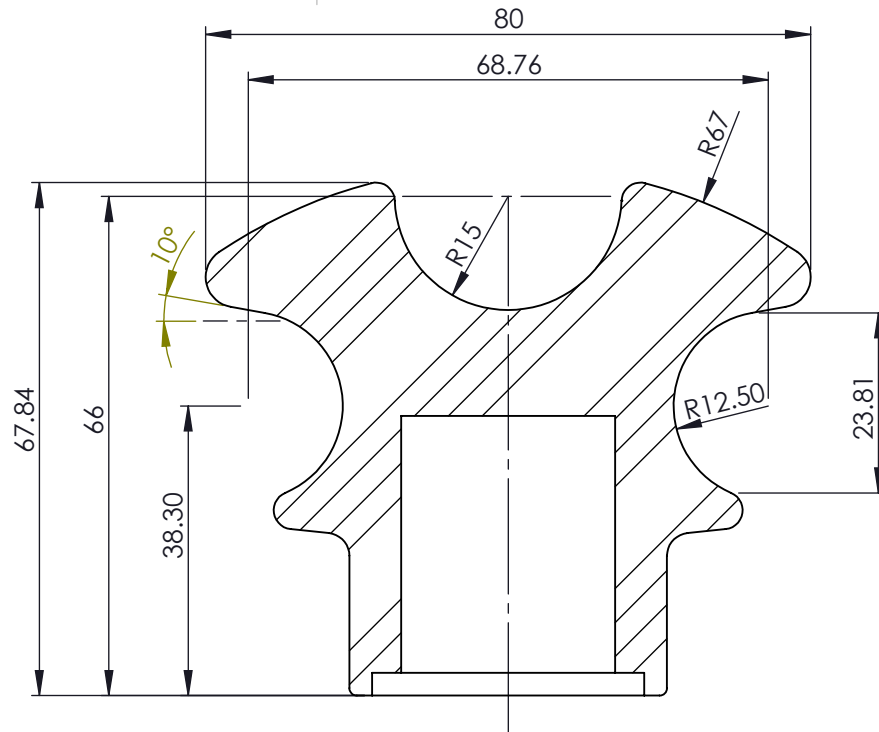
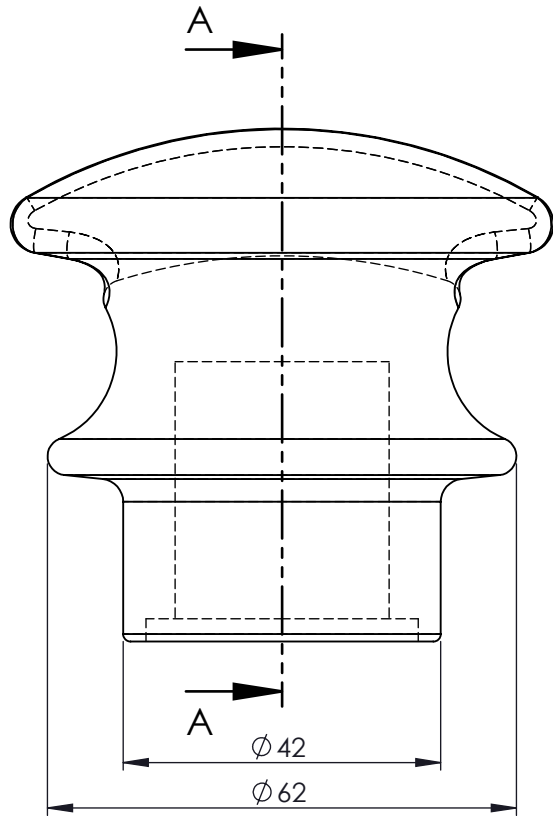


LD=645mm
Arc distance=240mm

Trade Mark:  oltage®



Specified Tensile Load =13 kN
Minimum Specified Cantilever Load =5 kN
Minimum Dry power frequency withstand voltage =70 kV
Minimum Wet power frequency withstand voltage = 50 kV
Minimum Lightning impulse withstand voltage = 125 kV
Type of the fittings: Top Fitting & Wrenchable Pin

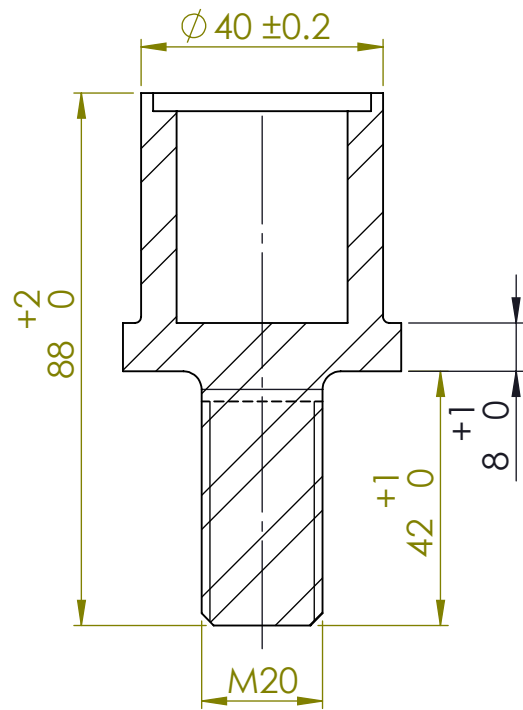
Scale: 1/3	Afra Modern Systems	Part or Asmbly Name:DP-280645	
Tol:0±0.1 0.0±0.05 0.00±0.02		Dwg No:01-01-31-01	Date:95.07.08 Design By: Omidi
	Size: A4	Unit: mm	Date:95.07.08 Drawn By: Omidi
	Pag No: 1 of 3	Rev: 01	Date:95.07.08 Checked By:Omidi
PED Code: 773852		Date:	Approved By: Firoozsani



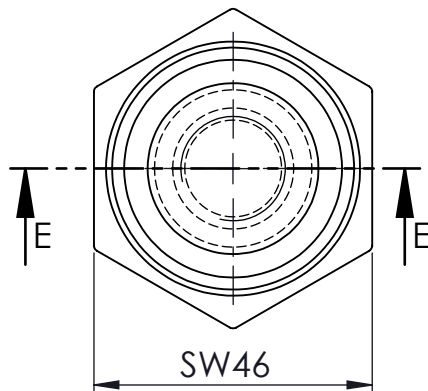
SECTION A-A
SCALE 1 : 1

Trade Mark:  oltage®

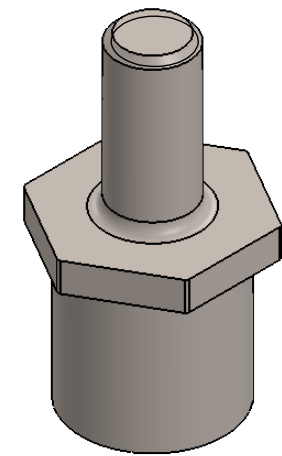
Scale: 1/1	Afra Modern Systems	Part or Asmbly Name: Top fitting rod 28	
		Date: 96.08.30	Design By: Omidi
Tol: 0±0.1 0.0±0.05 0.00±0.02	Dwg No: 01-02-02-05-12	Date: 96.08.30	Drawn By: Omidi
		Date: 96.08.30	Checked By: Omidi
 	Size: A4	Unit: mm	Date:
	Pag No: 2 of 3	Rev: 03	
PED Code: 773852			





SECTION E-E
SCALE 4 : 5



Note:
1-All sizes are measured after galvanising.



Trade Mark:  oltage®

Scale: 4/5	Afra Modern Systems	Part or Asmbly Name: Fitting 28	
Tol: 0 ± 0.1 0.0 ± 0.05 0.00 ± 0.02		Date: 94.11.26	Design By: Omidi
 	Dwg No: 01-02-02-21	Date: 94.11.26	Drawn By: Omidi
	Size: A4	Unit: mm	Date: 94.11.26
	Pag No: 3 of 3	Rev: 01	Checked By: Omidi
	PED Code: 773852	Date:	Approved By: Firoozsani