



# DISPOSABLE BIOPSY FORCEPS

## WHERE TECHNOLOGY AND RELIABILITY MEET

The biopsy forceps are extraordinarily sharp, which guarantees safe and effortless removal of significant tissue specimens. The CamDesign of our TechBite™ requires only very gentle contact pressure for a very good biopsy. The shortened distal end goes easy on the working

channel, even in angled positions. This is always guaranteed by the fully-mechanized production system used to manufacture TechBite™. With its classic shear joints, the TruBite combines easy handling with reliable quality.

### SPECIFIC CHARACTERISTICS

- Significant biopsies
- A design that goes easy on the working channel
- Short distal end: 9 mm (TechBite™), 11.5 mm (TruBite)
- Wide product range



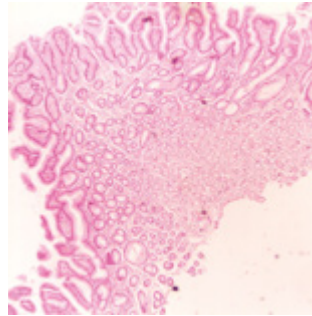
Cam-Design (Fig. TechBite™)



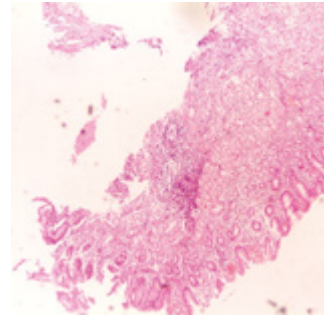
Scissors joint (Fig. TruBite)

## CONVINCING IN PRACTICAL USE

All of our forceps are equipped with a polyethylene coating. The labels can be consulted at any time for information regarding the withdrawal of the biopsy forceps.



Biopsate removed with a toothed cutting edge



Biopsate removed with a smooth cutting edge



## HANDLE AVAILABLE AS 1-RING VERSION

All forceps are equipped with the 1-ring handle. This allows you to use a one-hand grip method.

## JAW SECTIONS FOR EVERY INTERVENTION

Whether for biopsies or for removal of small polyps – the disposable biopsy forceps are perfectly equipped for any task with different jaw sections: with a smooth or a toothed cutting edge, with or without a spike.



## HIGH QUALITY COATING

The coating protects the working channel against scratching and provides a frictionless feed motion. The colored marking shows the removal of the forceps from the working channel in order to prevent damage to the mucous membrane. The forceps have been given different colors so they can be quickly allocated in accordance with working length:

Blue: 2300 mm or 2600 mm

Orange: 1800 mm

Yellow: Pediatric 1800 mm or 2600 mm

## SELECTION OF MORE THAN 30 BIOPSY FORCEPS

The broad range includes forceps of various sizes, and with differing features. An extract from the portfolio can be found below, while page five (5) offers a complete overview.

### TECHBITE™



Jaw Ø 2.3 mm,  
180 cm length



Jaw Ø 2.3 mm,  
230 cm length

### TRUBITE



Jaw Ø 2.3 mm,  
180 cm length



Jaw Ø 2.3 mm,  
230 cm length

## SPECIAL FORCEPS

### TECHBITE™ PAEDIATRICS



Jaw Ø 1.8 mm,  
180 cm length

### MACRO



Jaw Ø 3.0 mm,  
230 cm length

### TRUBITE PAEDIATRICS



Jaw Ø 1.8 mm,  
180 cm length

### LARGE CAPACITY



Jaw Ø 2.4 mm,  
180 cm length



Jaw Ø 2.4 mm,  
180 cm length

## SPECIFICATIONS

| REF                            | Working<br>channel Ø mm | Length<br>mm | Opening width<br>mm | Jaw Ø<br>mm | Spike | Covering | Jaw      | Grip   |
|--------------------------------|-------------------------|--------------|---------------------|-------------|-------|----------|----------|--------|
| <b>TECHBITE™</b>               |                         |              |                     |             |       |          |          |        |
| EBF33-11023180                 | 2.8                     | 1800         | 6.7                 | 2.3         | No    | Orange   | Smooth   | 1-ring |
| EBF33-11023230                 | 2.8                     | 2300         | 6.7                 | 2.3         | No    | Blue     | Smooth   | 1-ring |
| EBF33-11123180                 | 2.8                     | 1800         | 6.7                 | 2.3         | Yes   | Orange   | Smooth   | 1-ring |
| EBF33-11123230                 | 2.8                     | 2300         | 6.7                 | 2.3         | Yes   | Blue     | Smooth   | 1-ring |
| EBF43-11023180                 | 2.8                     | 1800         | 6.7                 | 2.3         | No    | Orange   | Serrated | 1-ring |
| EBF43-11023230                 | 2.8                     | 2300         | 6.7                 | 2.3         | No    | Blue     | Serrated | 1-ring |
| EBF43-11123180                 | 2.8                     | 1800         | 6.7                 | 2.3         | Yes   | Orange   | Serrated | 1-ring |
| EBF43-11123230                 | 2.8                     | 2300         | 6.7                 | 2.3         | Yes   | Blue     | Serrated | 1-ring |
| <b>TRUBITE</b>                 |                         |              |                     |             |       |          |          |        |
| EBF53-11023180                 | 2.8                     | 1800         | 6.7                 | 2.3         | No    | Orange   | Smooth   | 1-ring |
| EBF53-11023230                 | 2.8                     | 2300         | 6.7                 | 2.3         | No    | Blue     | Smooth   | 1-ring |
| EBF53-11123180                 | 2.8                     | 1800         | 6.7                 | 2.3         | Yes   | Orange   | Smooth   | 1-ring |
| EBF53-11123230                 | 2.8                     | 2300         | 6.7                 | 2.3         | Yes   | Blue     | Smooth   | 1-ring |
| EBF63-11023180                 | 2.8                     | 1800         | 6.7                 | 2.3         | No    | Orange   | Serrated | 1-ring |
| EBF63-11023230                 | 2.8                     | 2300         | 6.7                 | 2.3         | No    | Blue     | Serrated | 1-ring |
| EBF63-11123180                 | 2.8                     | 1800         | 6.7                 | 2.3         | Yes   | Orange   | Serrated | 1-ring |
| EBF63-11123230                 | 2.8                     | 2300         | 6.7                 | 2.3         | Yes   | Blue     | Serrated | 1-ring |
| <b>SPECIAL FORCEPS</b>         |                         |              |                     |             |       |          |          |        |
| <b>TECHBITE™ – PAEDIATRICS</b> |                         |              |                     |             |       |          |          |        |
| EBF33-11018180                 | 2.0                     | 1800         | 4.5                 | 1.8         | No    | Yellow   | Smooth   | 1-ring |
| EBF43-11018180                 | 2.0                     | 1800         | 4.5                 | 1.8         | No    | Yellow   | Serrated | 1-ring |
| EBF43-11118180                 | 2.0                     | 1800         | 4.5                 | 1.8         | Yes   | Yellow   | Serrated | 1-ring |
| <b>TRUBITE – PAEDIATRICS</b>   |                         |              |                     |             |       |          |          |        |
| EBF53-11018180                 | 2.0                     | 1800         | 4.5                 | 1.8         | No    | Yellow   | Smooth   | 1-ring |
| EBF53-11118180                 | 2.0                     | 1800         | 4.5                 | 1.8         | Yes   | Yellow   | Smooth   | 1-ring |
| EBF13-11018180                 | 2.0                     | 1800         | 4.5                 | 1.8         | No    | Yellow   | Serrated | 1-ring |
| EBF13-11118180                 | 2.0                     | 1800         | 4.5                 | 1.8         | Yes   | Yellow   | Serrated | 1-ring |
| <b>TRUBITE – ENTEROSCOPY</b>   |                         |              |                     |             |       |          |          |        |
| EBF03-11018260                 | 2.0                     | 2600         | 4.5                 | 1.8         | No    | Yellow   | Smooth   | 1-ring |
| EBF03-11023260                 | 2.8                     | 2600         | 6.7                 | 2.3         | No    | Blue     | Smooth   | 1-ring |
| <b>TRUBITE – MACRO</b>         |                         |              |                     |             |       |          |          |        |
| EBF03-01030230                 | 3.2                     | 2300         | 8.5                 | 3.0         | No    | Blue     | Smooth   | 1-ring |
| EBF03-01130230                 | 3.2                     | 2300         | 8.5                 | 3.0         | Yes   | Blue     | Smooth   | 1-ring |
| EBF13-01030230                 | 3.2                     | 2300         | 8.5                 | 3.0         | No    | Blue     | Serrated | 1-ring |
| EBF13-01130230                 | 3.2                     | 2300         | 8.5                 | 3.0         | Yes   | Blue     | Serrated | 1-ring |
| <b>LARGE CAPACITY</b>          |                         |              |                     |             |       |          |          |        |
| LCEBF63-10024180               | 2.8                     | 1800         | 9.0                 | 2.4         | No    | Orange   | Serrated | 1-ring |
| LCEBF63-10024230               | 2.8                     | 2300         | 9.0                 | 2.4         | No    | Blue     | Serrated | 1-ring |
| LCEBF63-10124180               | 2.8                     | 1800         | 9.0                 | 2.4         | Yes   | Orange   | Serrated | 1-ring |
| LCEBF63-10124230               | 2.8                     | 2300         | 9.0                 | 2.4         | Yes   | Blue     | Serrated | 1-ring |

Packaging unit: 10 pieces