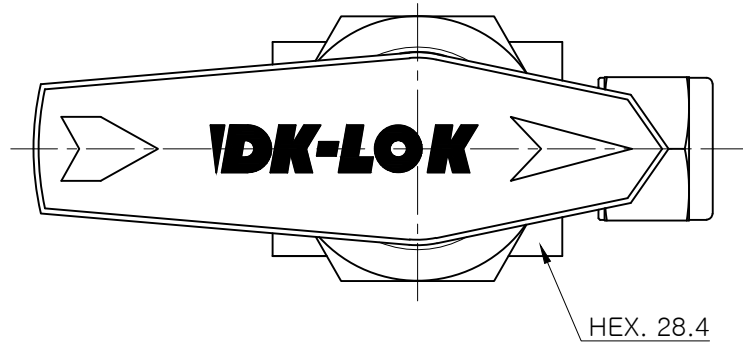


REV. NO.	REVISION NOTES	DATE
0	ISSUED FOR APPROVAL	2023.08.08

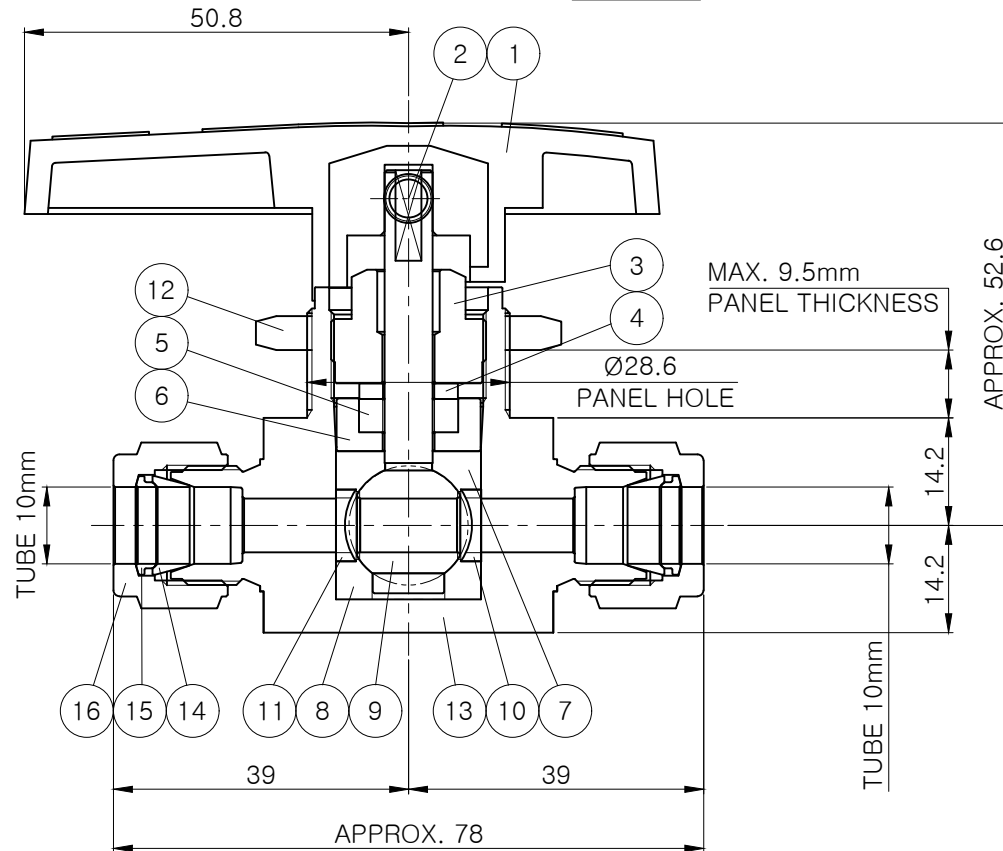


\* MARKING

**IDK-LOK**  
 V82C-D-10M-F316  
 F316 [HCN]  
 2500 PSIG @ 100 °F  
 172 BAR @ 38 °C  
 .279 in Ø7.1mm  
 [DATE]

\* SPECIFICATION

- DESIGN PRESSURE : 2,500 psig@100°F (172 bar@38°C)
- TEMPERATURE RANGE : 50 ~ 150°F (10 ~ 65°C)  
WITH STANDARD PTFE SEAT
- ORIFICE : Ø7.1mm
- Cv : 6.0
- DIMENSIONS ARE FOR REFERENCE ONLY AND ARE SUBJECT TO CHANGE.
- DIMENSIONS ARE SHOWN WITH DK-LOK NUTS FINGER-TIGHT.
- UNIT : mm
- "\*" ARE WETTED PARTS.



NO.	DESCRIPTION	MATERIAL	Q'TY	REMARK
16	NUT	ASTM A 276 TYPE316	2	
15	BACK FERRULE	ASTM A 479 TYPE316	2	
* 14	FRONT FERRULE	ASTM A 479 TYPE316	2	
* 13	BODY	ASTM A 182 F316	1	
12	PANEL NUT	ASTM A 276 TYPE316	1	
* 11	SIDE DISC	SS316 POWDERED METAL	2	
* 10	SUPPORT RING	SS316 POWDERED METAL	2	
* 9	BALL STEM	ASTM A 276 TYPE316	1	
* 8	LOWER PACKING	PTFE	1	
* 7	UPPER PACKING	PTFE	1	
6	LOWER GLAND	ASTM A 276 TYPE316	1	
5	BUSHING	PTFE	1	
4	UPPER GLAND	ASTM A 276 TYPE316	1	
3	PACKING BOLT	ASTM A 276 TYPE316	1	
2	SET SCREW	STAINLESS STEEL 304	1	
1	HANDLE	NYLON WITH ZINC INSERT	1	

APPROVED	<b>J.H. Jeon</b>	TITLE V82C SERIES BALL VALVE  TUBE O.D 10mm
REVIEWED	<b>B.W. Kang</b>	
DESIGNED	<b>H.I. Park</b>	
SCALE	1 : 1	
DATE	2023.08.08	
DWG. NO.	V82C-D-10M-F316	

**IDK-LOK**  
 Fittings & Valves