

## Standard Configurations of Item 1

### Cutting Software

1-1



**POWER CUT SOFTWARE**  
Manual Nesting Version  
Permanent license

1

Included

1-2



**RZAI Cutter Optimizer**  
Permanent license

1

Included

### Tools / Functions

1-3



**Electric Oscillating Tool - EOT**

1

Included

1-4



**Pneumatic Punch Tool - PPT**

1

Included

1-5



**Universal Drawing Tool - UDT**

1

Included

1-6



**HD TV Screen**

1

Included

1-7



**Projector**

1

Included

1-8



**Industrial Computer**

1

Included

1-9



**Mouse and keyboard**

1

Included

1-10



**Infrared Cross Pointer**

1

Included



1-11		<b>Vacuum pump</b>	1	Included
1-12		<b>Aluminium Absorbing Platform</b> Thickness: 45mm Hole Spacing: 15mm	1	Included
<b>Consumables</b>				
1-13		<b>Table Mat</b> For RZCUT5-1007E	1	Included
1-14		<b>BLADES</b>	30	Included
1-15		<b>Punch Bits</b> (φ1mm, 1.5mm, 2.0mm, 2.5mm, 3.0mm, 3.5mm, 4.0mm, 4.5mm, 5mm, 5.5mm)	4/ each	Included
<b>Others &amp; Services</b>				
1-16		<b>Projector &amp; Camera Shelf / Stand</b>	1	Included
1-17		<b>Tool Box</b>	1	Included
1-18	/	<b>Operation Manual of Machine</b>	1	Included
1-19	/	<b>12 Months Warranty Service</b>	1	Included
1-20	/	<b>Installation and Training</b>	1	Included

## Parameters

Model	RZCUT5-1007E
Working Area	1000mm (L) × 700mm (W)
Machine Dimension	1750mm (L) × 1370mm (W) × 1250mm (H)
Packing Dimension	1850mm (L) × 1460mm (W) × 1540mm (H)
Net Weight	440 (KG)
Gross Weight	600 (KG)
Cutting Speed	General work speed 500-1200mm/s, Max. straight line speed 3000mm/s
Processing Thickness	0.1-30mm
Machine Table	Fixed Table



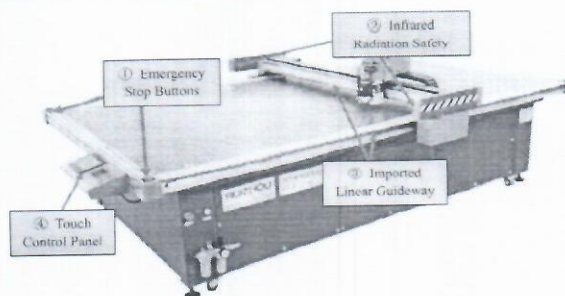
Machine Language	HP-GL and GP-GL
Machine Voltage	220V/380±10%
Vacuum Pump Voltage	4 KW, 3-Phase 380V/50Hz ± 10%
Transmission Interface	Ethernet port and LAN cable
Compatible Software	Software that support DXF or PLT files, eg: CorelDraw, AutoCAD, AI.
Control Software	RUIZHOU self developed control software
Control Panel	Resistive touch screen
File Formats	*.DXF, *.PLT, *.HPGL
Motor	Panasonic servo motor
Driver	Panasonic servo driver
Applicable Material	Genuine leather, Synthetic Leather, PU, Mesh fabrics, Oxfords, Textile, Fabric, etc.
Hold-down Method	Divisional vacuum system
Resolution	0.01mm
Transmission Device	Imported straight-line guide rail, Sync Belt

## Installation Conditions

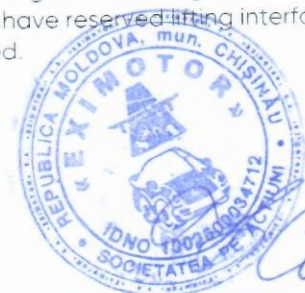
RZCUT5-1007E

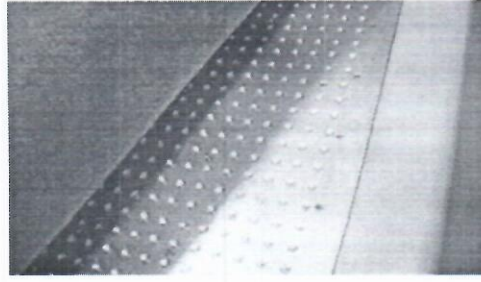
1. Space occupation: 4m<sup>2</sup>
2. 3 phase, 380V ±10%, 50Hz.

## Function Introduction



- 4 emergency stop buttons are distributed in the four corners of the machine. If any button is pressed down, the machine will be stopped immediately.
- Infrared radiation safety device includes four laser beams. If any of the laser beam is blocked, cutting will be paused. Continue the work can be done from machine control panel.
- Combine use of screw rod, aluminum rack and imported linear guideway to guarantee higher accuracy and durability.
- Touch control panel includes all machine settings. Free switching of 4 operating languages (Chinese, English, Korea, Turkish).
- One-piece aluminum platform, using honeycomb structure principle. Compared with other suppliers who use acrylic or composite wooden plate, our machine has many advantages such as high precision, strong, anti-corrosion, durable, sound absorption and heat insulation. We have reserved lifting interface on the machine table, making it accessible when lifting operation is needed.

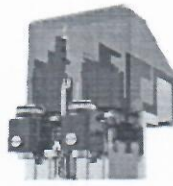




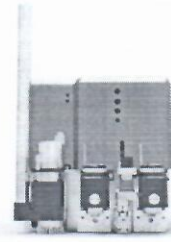
● Modular cutter concept, intelligent, efficient, ready for the future, one for all application. It can be changed, expanded, upgraded any time. Modular tooling allows for processing a wide variety of materials up to a maximum thickness of 25mm.



Single-Module Head



Double-Module Heads



Triple-Module Heads

● With the appropriate tool, RZCRT can handle many materials, many applications.





Reference Pictures:

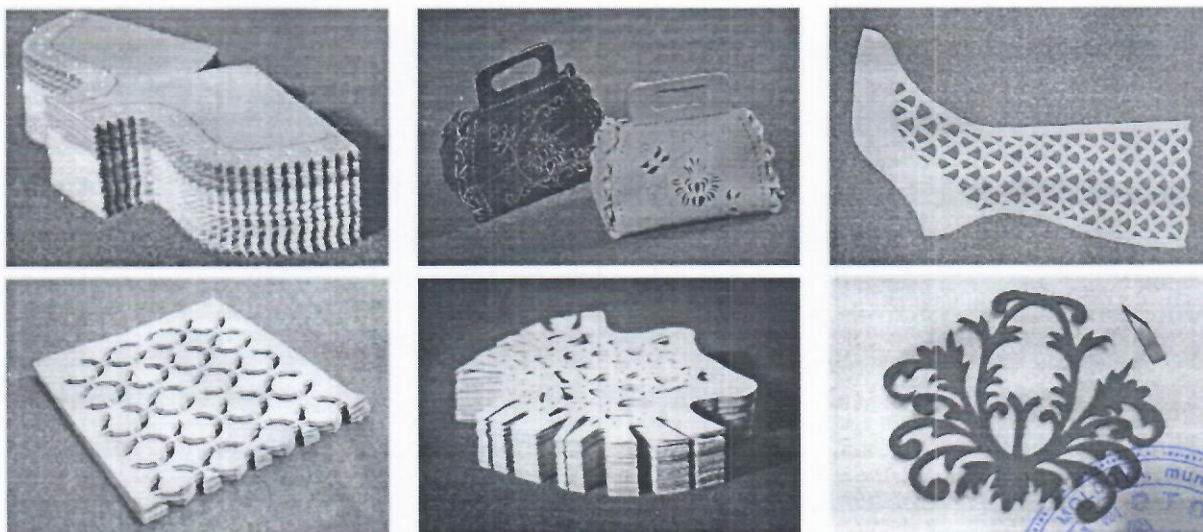
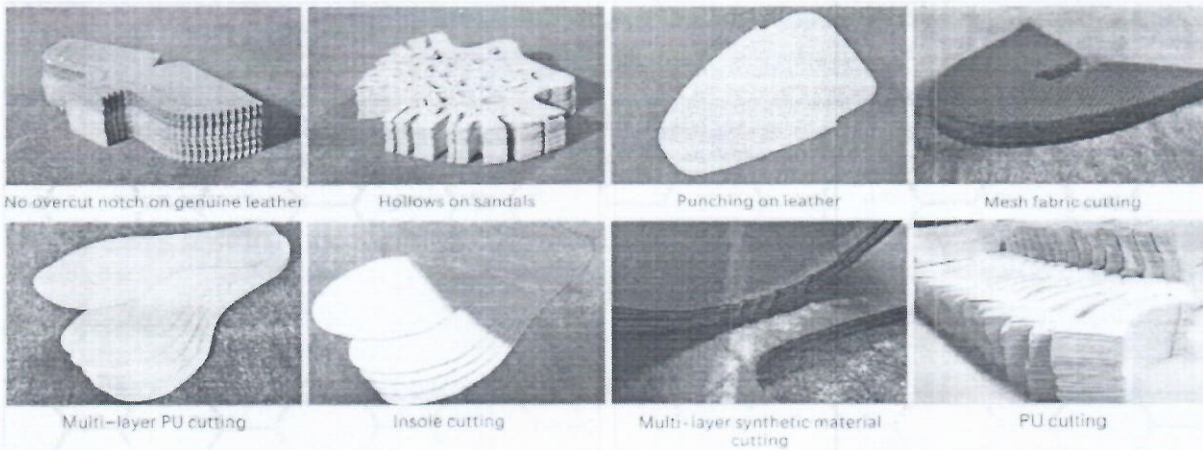
Product







## Samples

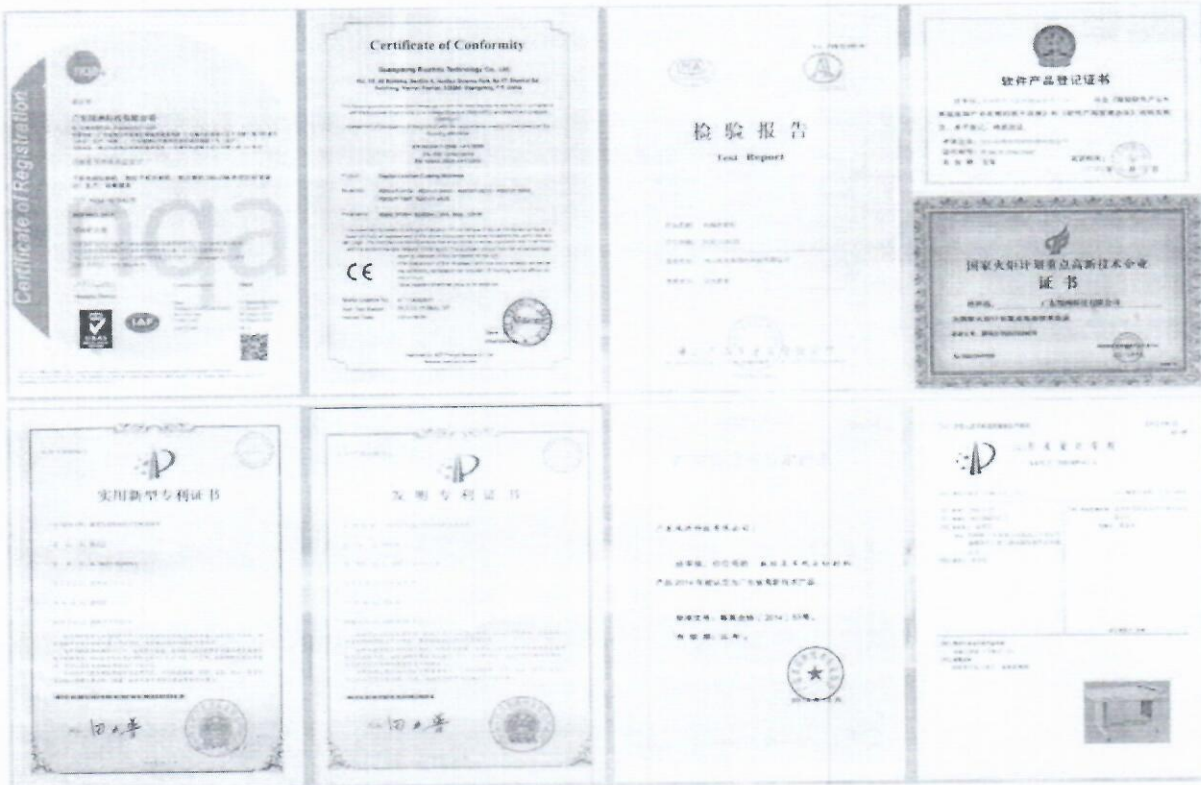




## Packing



## Certifications





## Company

