



# LOGIQ™ P9

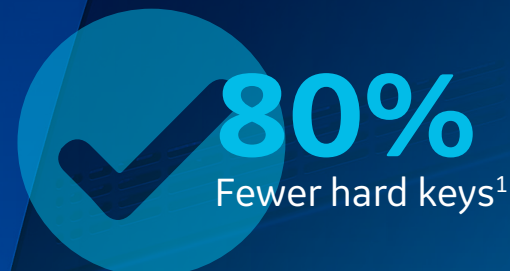
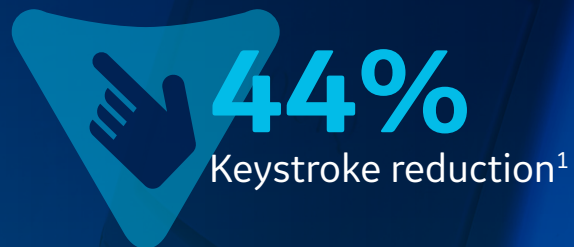
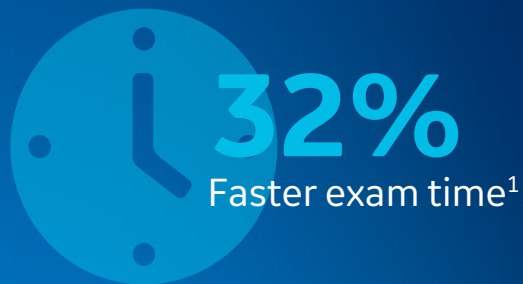
MAKE IT EASY. MAKE IT YOUR OWN.





# YOU ASKED FOR SIMPLICITY. **We delivered.**

The LOGIQ™ P9 ultrasound system is ideal for the clinical and workflow demands of general imaging. From triage to comprehensive exams, the budget-friendly LOGIQ P9 delivers consistent image quality, comprehensive application coverage, and ease of use that enable timely, confident decisions.



# PERSONALIZED for customized workflow

Easy to learn and use, the LOGIQ P9 supports high efficiency for busy schedules.

**Touch Control** – Manipulate images on the touch panel with your fingertips, even when gloved. Zoom, magnify, freeze—all with a touch, similar to using a tablet or smartphone. Excellent cleanability as well.

**My Page** – Personalized digital user interface enables customization of workflow preferences and use case presets. Simply log in, select the appropriate exam type, and begin scanning.

**Photo Assistant App** – Integrates anatomical photos, taken from an Android™ device, into the ultrasound study to assist clinicians in confirming findings, documenting clinical symptoms, and reporting.



# PATIENT-CENTRIC for excellent care

The LOGIQ P9 supports your diagnostic confidence across a wide range of patient exams.

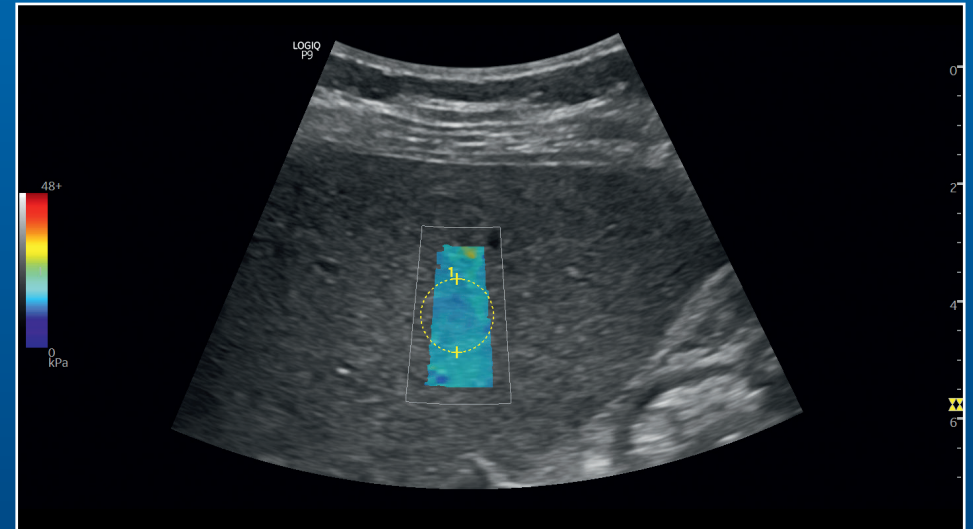
**Excellent image quality** with minimal tweaking required, and superb B-Mode spatial and contrast resolution.

**Wide selection of high quality probes** for excellent exam coverage including abdominal, cardiac, OB/GYN, musculoskeletal, vascular, small parts, pediatrics, urology and intra-operative procedures.

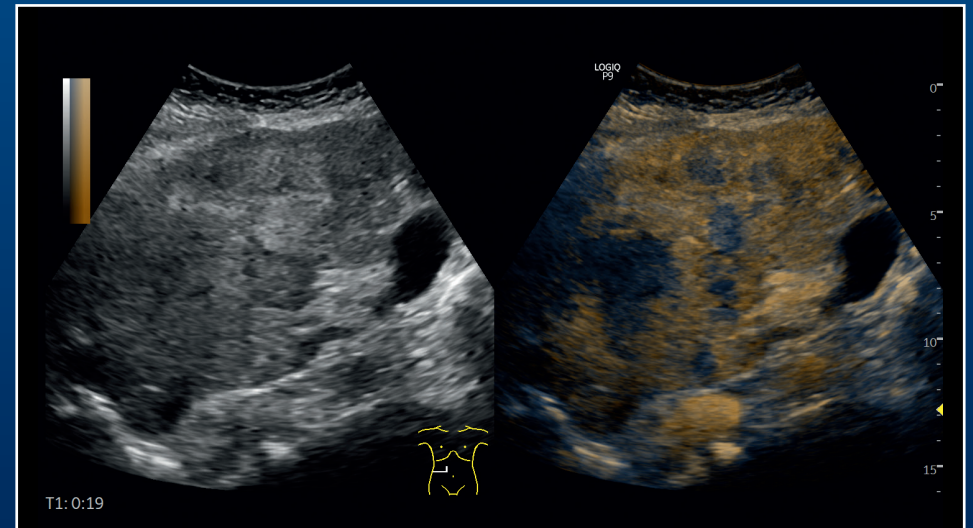
## Advanced imaging and visualization tools, including:

- B-Flow™
- HD Color
- 3D/4D
- HDlive™
- STIC/Omniview
- Strain and 2D Shear Wave Elastography
- Stress Echo
- TVI/TVD
- Cardiac Strain
- CEUS
- Enhanced B-Steer+
- Simultaneous display for urology

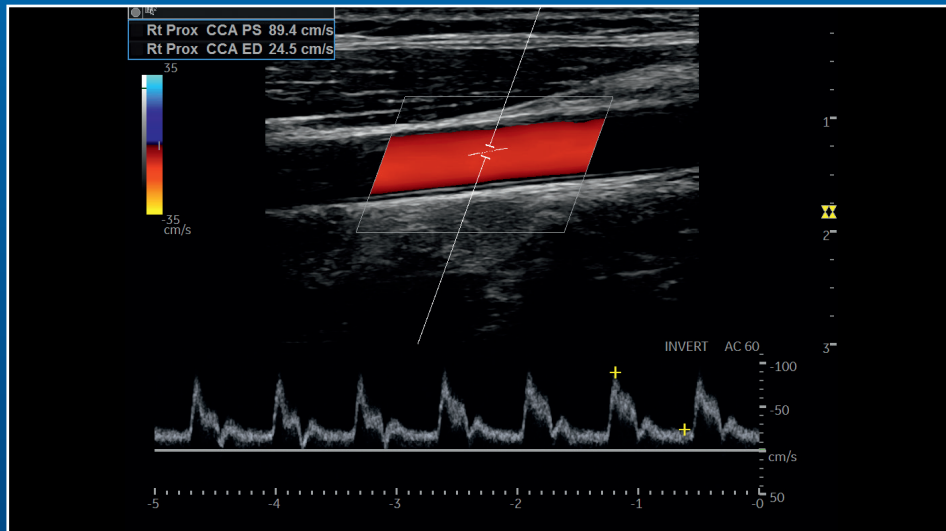
**Easily share and archive images** with Tricefy™ cloud-based storage, especially useful for OB imaging.



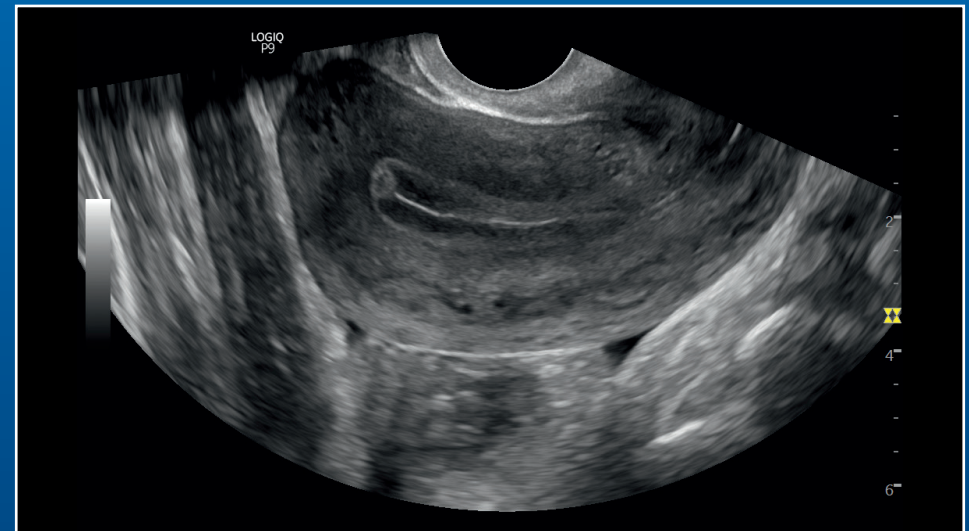
Liver Shear Wave Elastography, C1-5-RS



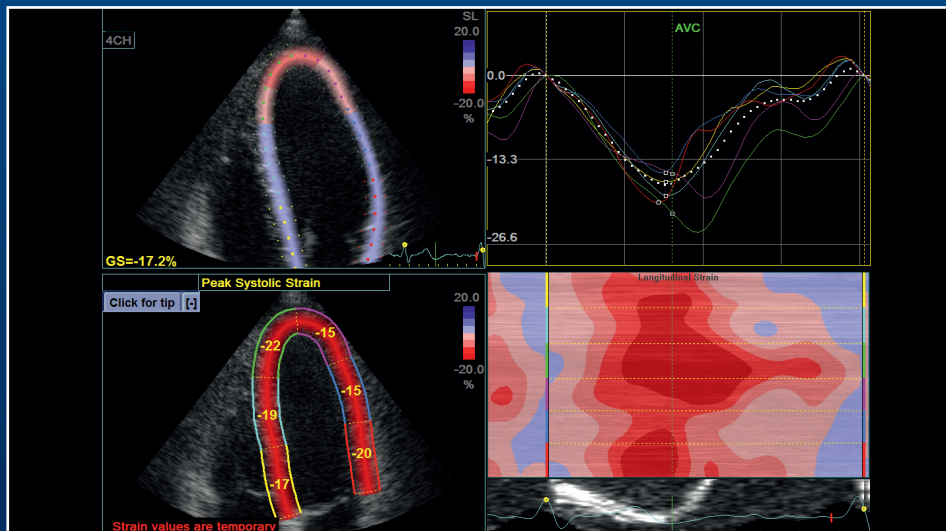
CEUS, C1-5-RS



Carotid Artery CF and PW, L4-12t-RS



Uterus B-Mode, IC9-RS



Cardiac Strain, 3Sc-RS



HDlive, RAB2-6-RS

# PRACTICAL for everyday and investment value

The LOGIQ P9 system easily adjusts to your working style, preferences and variable needs throughout your workday.



PRE-PROGRAMMED BUTTON PROBE



REMOTE CONTROL SCANNING

## AUTOMATED EFFICIENCY

- Remote Control App enables operation from an Android™ device with the LOGIQ Apps
- Automated tools include Auto TGC, Auto IMT, AutoEF, Measure Assistant, Compare Assistant, and Scan Assistant
- Pre-programmed L4-12t-RS button probe functions without accessing the touch panel to help preserve the sterile field

## DATA MANAGEMENT

- Easy data migration supported by DICOM®
- Volume Navigation Import to merge real-time ultrasound with CT and MR datasets

## ADVANCED ERGONOMICS

- + External battery enables up to one hour of offline scanning
- + Large 21.5-inch monitor and accessible 10.4-inch touchscreen
- + Simple operating panel design with fewer physical keys<sup>1</sup>
- + Fully articulating arm<sup>2</sup>, with up/down/swivel
- + Compact, lightweight design including wireless LAN and Power Assistant battery operation
- + Digital TGC and digital keyboard<sup>3</sup>

## STRONG SECURITY AND SUPPORT

- SonoDefense built on the Windows® 10 IoT operating system provides multi-layer security to protect system integrity and patient data privacy
- My Trainer on-board training modules help accelerate operational confidence
- LOGIQ Club website offers educational resources to help optimize system utilization
- Purchasable service agreement options<sup>2</sup> including remote service capabilities





# Now even more ADVANCED



**Touch Control** – Easily adjust imaging parameters on touch panel, even wearing gloves



**Photo Assistant App** – Combine anatomical photos and images in same report



**HD Color** – Sensitivity for visualizing small vessels and slow flow



**2D Shear Wave Elastography** – Quantitative estimate of tissue elasticity displayed in color-coded elastograms



**Remote Control App** – Operate the system from an Android phone or tablet



**SonoDefense** – Powerful data security features to help guard against costly breaches



**Personalized**  
Customizable workflow features deliver high efficiency your way

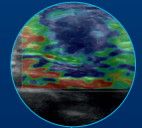


**Practical**  
Advanced automation and ergonomics enable fast exams and reliable results



## Patient-centric

Quality images and advanced tools support diagnostic confidence across a wide range of patient exams



*The LOGIQ P9 has been designed for compatibility with most commercially available ultrasound contrast agents. Availability of these agents is subject to government regulation and approval. Contrast imaging should be performed within the approved indications for use of the contrast agent used in the exam.*

## Imagination at work

Product may not be available in all countries and regions. Full product technical specification is available upon request. Contact a GE Healthcare Representative for more information. Please visit [www.gehealthcare.com/promotional-locations](http://www.gehealthcare.com/promotional-locations).

Data subject to change.

© 2018 General Electric Company.

GE, the GE Monogram, imagination at work, LOGIQ, HD*live* and B-Flow are trademarks of General Electric Company. Android is a registered trademark of Google, Inc. DICOM is a trademark of the National Electrical Manufacturers Association. Windows is a registered trademark of Microsoft Corporation. Tricefy is a trademark of Trice Imaging. All other third-party trademarks are the property of their respective owners.

Reproduction in any form is forbidden without prior written permission from GE. Nothing in this material should be used to diagnose or treat any disease or condition. Readers must consult a healthcare professional.

September 2018 JB60493XX 300-19-U001E

1. Internal GE engineering study using standardized protocols for an abdominal exam compared with prior version GE LOGIQ P6 ultrasound system.
2. Availability varies; please contact your GE Healthcare Representative for more information.
3. Optional physical keyboard.