

Vexve steel ball valve

Series 154xx1, flange / flange, full bore, DN 100-400, PN 16

Page 1



DN 100-400



DN 100-400

Materials

Body	DN 100-400: Steel, P235GH (1.0345)
Ball	DN 100-400: Stainless steel, X5CrNi18-10 (1.4301)
Ball seal	DN 100-400: PTFE+C
Stem	DN 100-400: Stainless steel, X8CrNiS18-9 (1.4305)
Stem seal	DN 100-400: FPM

Mounting

flange / flange	EN 1092-1 Available PN 10, 16, 25, 40
------------------------	--

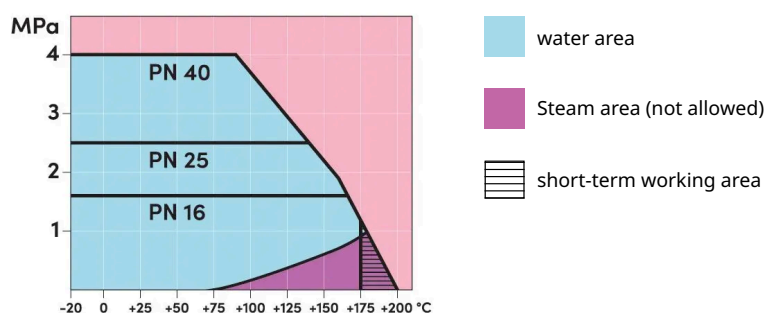
Operation

DN 100-400	manual gear
-------------------	-------------

Operating conditions

Temperature	-20 °C - +200 °C
Leakage rate	A (EN 12266-1)

Below -20 °C contact manufacturer. Lowest allowed ambient temperature -40 °C.

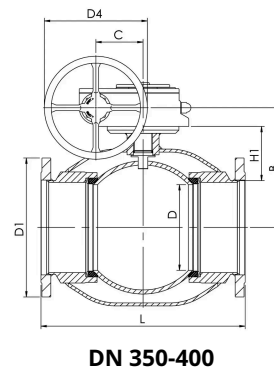
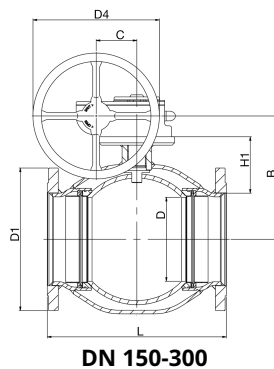
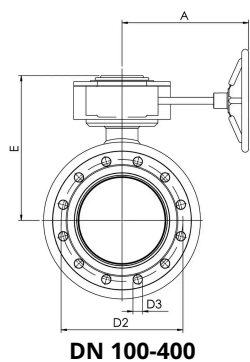


DN 100-400

Vexve steel ball valve

Series 154xx1, flange / flange, full bore, DN 100-400, PN 16

Page 2



Dimensions

DN	PN	Product no.	A	B	C	D	D1	D2	D3	D4	E	H1	L	Kg
100	16	154101	224.0	216	53	100.0	220	180	18	200	258	124.0	350	31
125	16	154126	224.0	236	53	125.0	250	210	18	200	279	132.0	375	39
150	16	154151	268.0	244	69	150.0	285	240	22	250	293	117.0	375	56
200	16	154201	301.0	294	97	200.0	340	295	22	300	345	135.0	425	97
250	16	154251	363.0	343	118	250.0	405	355	26	600	412	148.0	533	150
300	16	154301	363.0	418	118	290.0	460	410	26	600	487	206.0	716	260
350	16	154351	440.0	500	138	340.0	520	470	26	500	573	266.0	802	360
400	16	154401	471.0	576	180	390.0	580	525	30	500	648	307.0	1016	670