

Buletin de încercare nr. 0392-22/09.05.2022

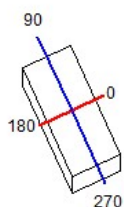
DISTRIBUȚIA INTENSITĂȚII LUMINOASE

Produsul: VOLTAMPERA 03 LED 18750LM 125W 740 TP3
 Scopul: VALIDARE
 Sursa de lumină: PCBA 2X8LED AL 5050H 740
 Dispersorul: DISPERSOR STICLA SECURIZATA + SM-DK-5050-145X70-TPIII-M-4H1
 Reflectorul: -

Buletinul se referă strict la mostrele încercate și se interzice reproducerea lui parțială.

Observații: Led driver TRIDONIC LCO135/200-1050/64 NFCADV3
 Temperatura de culoare măsurată $T_K = 4000K$, CRI =70, PUTERE 125W, FLUX BRUT 18754 LM, FLUX NET 22264 LM;

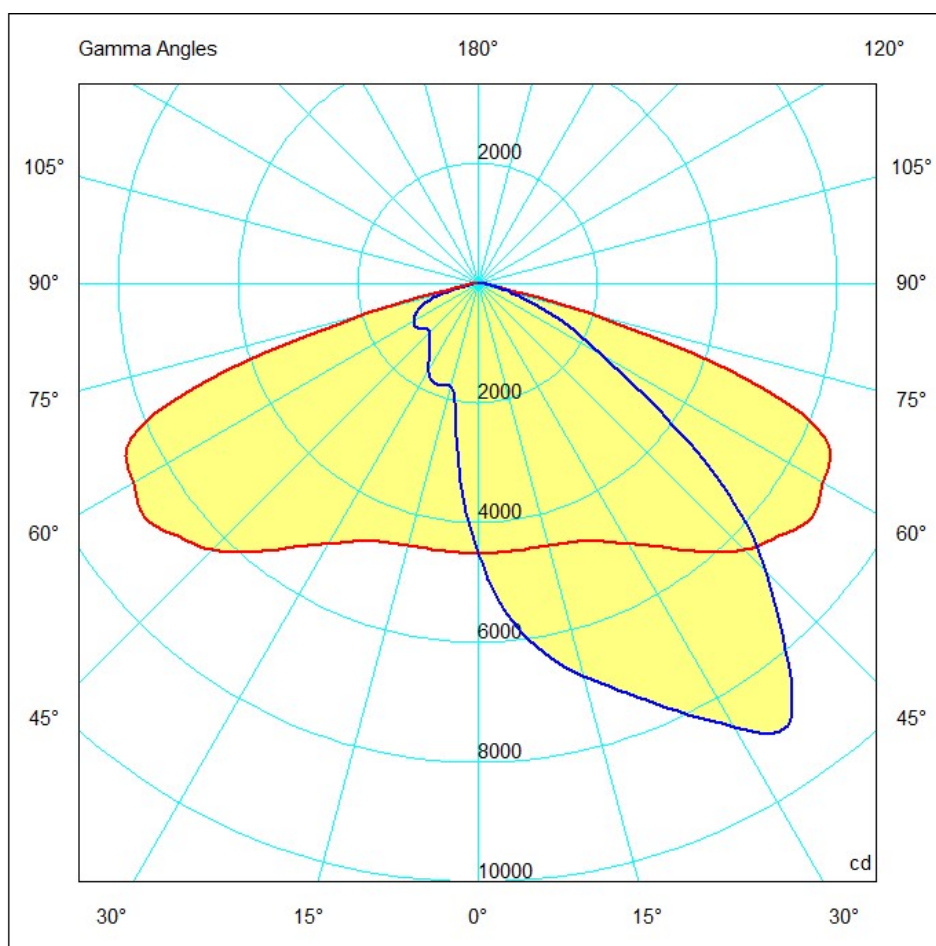
731mm x 325mm



C Halfplanes

270.0 ————
 180.0 ———— 0.0
 90.0 ————

Flux 22263.77 lm
 Maximum 9543.85 cd
 Position C=45.00 G=45.00
 Efficiency: 84.24%
 Date: 09-05-2022
 Sum on planes 270.00



ȘEF LABORATOR FOTOMETRIC

ing. Alexandru POPESCU
**LABORATOR FOTOMETRIC
 ELECTROBANAT
 Timișoara**

INTOCMIT DE:

ing. Mariana BARBU

TABEL CU VALORILE INTENSITĂȚII LUMINOASE

γ [°]	C[°]	I transversal[cd]	I longitudinal[cd]	
			I ₉₀	I ₂₇₀
0		4504.34	4504.34	4504.34
5		4504.34	5530.08	3322.51
10		4504.34	6243.64	2162.98
15		4526.64	6778.81	1783.90
20		4593.54	7269.38	1806.20
25		4749.63	7871.45	1806.20
30		5017.21	8540.41	1650.11
35		5373.99	9008.68	1404.82
40		5842.26	7982.94	1248.73
45		6288.24	6801.11	1137.23
50		6555.82	5463.19	1181.83
55		6801.11	3701.59	1271.03
60		6645.02	2363.66	1226.43
65		6466.63	1672.40	1137.23
70		5017.21	1003.44	958.84
75		1895.39	579.77	624.36
80		401.38	289.88	156.09
85		178.39	111.49	66.90
90		89.19	66.90	66.90

DIAGRAMA ISOLUX

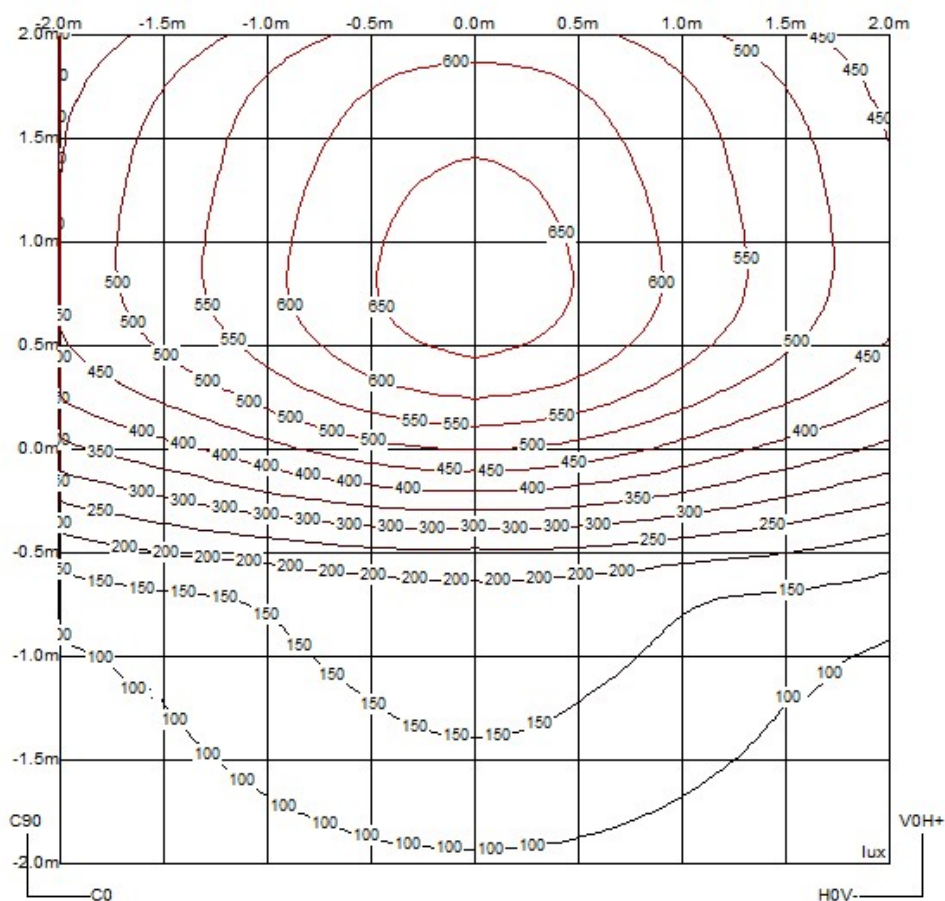
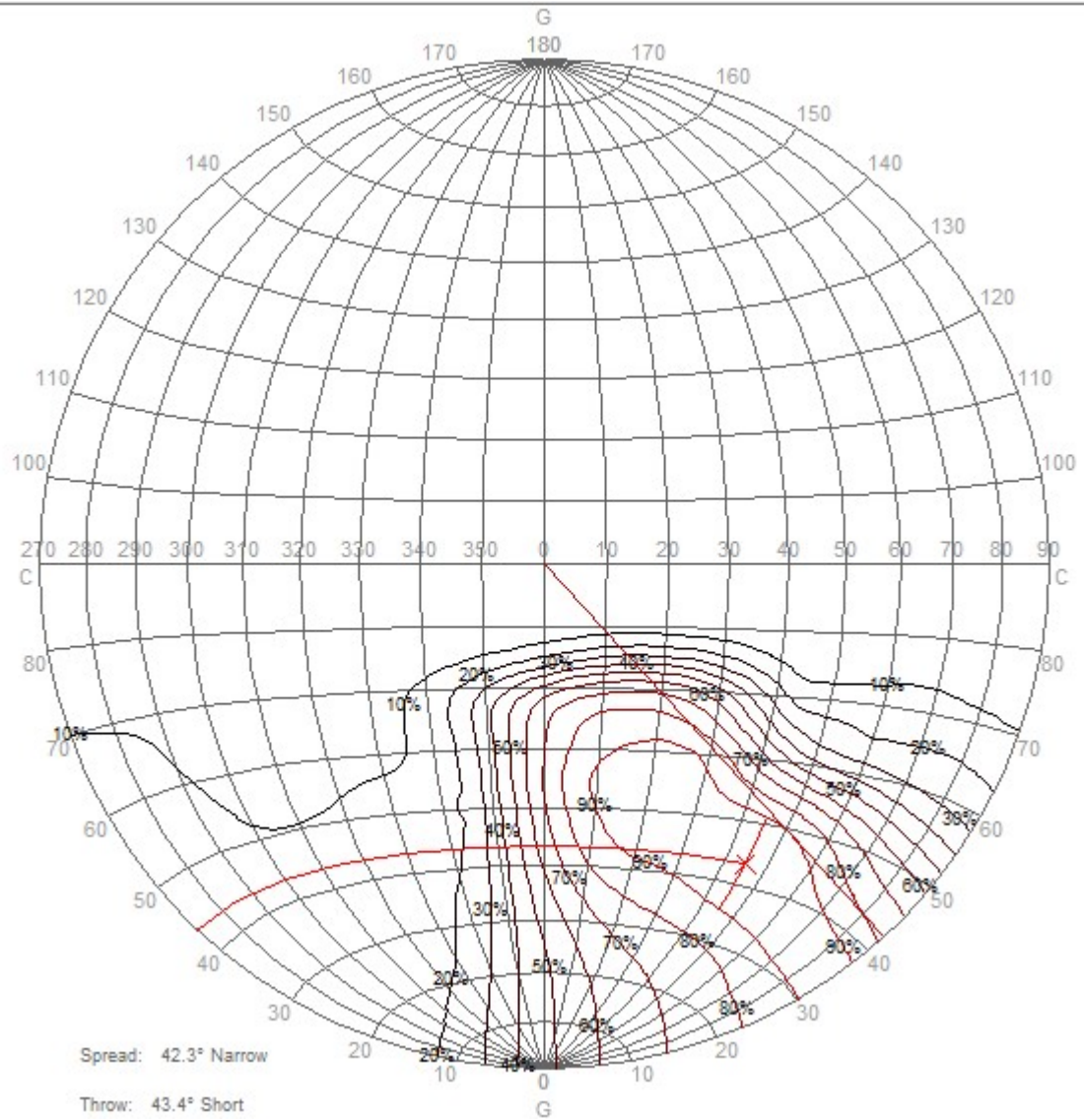


DIAGRAMA ISOCANDELA



CURBA K

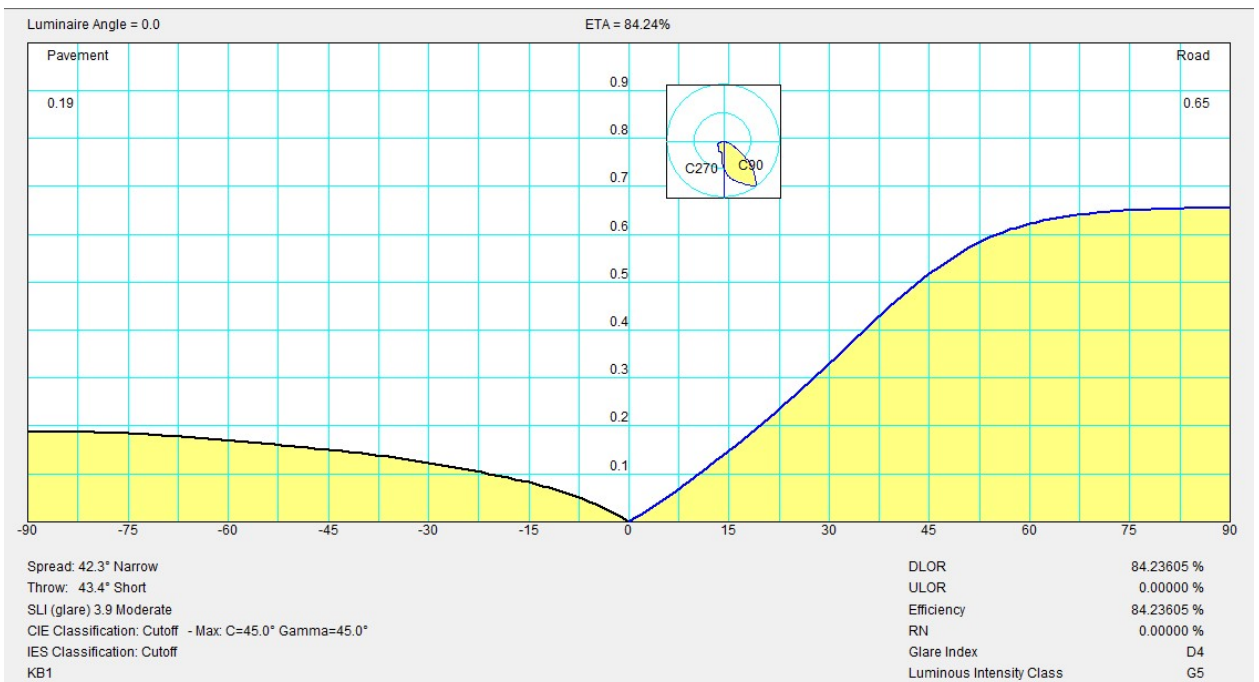
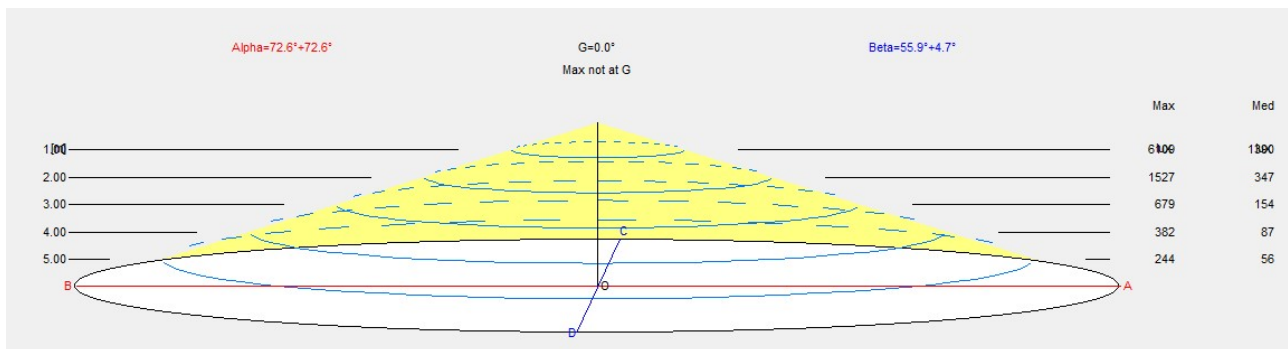


DIAGRAMA UNGHIULUI DE FASCICUL



CLASIFICAREA SISTEMULUI DE ILUMINAT

Luminaire Classification System (LCS)			
LCS Zone	Lumens	%Lamp	%Lum
FL 0° - 30°	2730.2 lm	12.3 %	14.6 %
FM 30° - 60°	8771.1 lm	39.4 %	46.8 %
FH 60° - 80°	2975.9 lm	13.4 %	15.9 %
FVH 80° - 90°	100.3 lm	0.5 %	0.5 %
BL 0° - 30°	1037.5 lm	4.7 %	5.5 %
BM 30° - 60°	1987.3 lm	8.9 %	10.6 %
BH 60° - 80°	1074.0 lm	4.8 %	5.7 %
BVH 80° - 90°	77.7 lm	0.3 %	0.4 %
UL 90° - 100°	0.0 lm	0.0 %	0.0 %
UH 100° - 180°	0.0 lm	0.0 %	0.0 %
TOTALS	18754.1 lm	84.2 %	100.0 %

BUG : B3 U0 G3 Type II Very Short Assymetrical

