



PRODUCT BRIEF

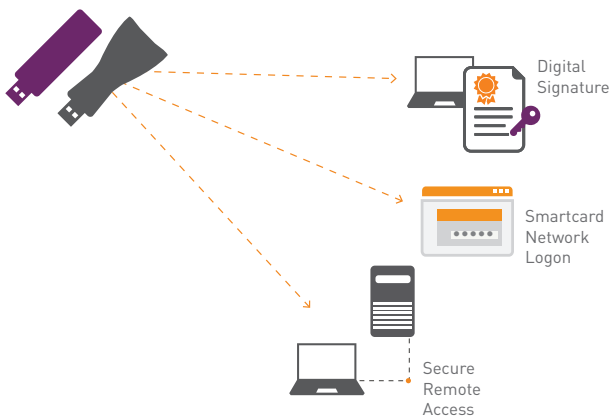
SafeNet Authentication Client

The Power to Easily Manage Gemalto's PKI-based Authentication

SafeNet Authentication Client is a unified middleware client that manages Gemalto's extensive SafeNet portfolio of Identity and Access Management Solutions, including certificate-based authenticators such as eToken, IDPrime smart cards, USB and software-based devices. Offering full backward compatibility and incorporating features from previous middleware versions, SafeNet Authentication Client ensures complete support for all currently deployed eToken devices, as well as IDPrime smart cards.

SafeNet Authentication Client links applications to Gemalto's PKI authenticators, providing full local administration and support for multiple advanced security applications such as digital signing, pre-boot authentication and disk encryption. With SafeNet Authentication Client, private keys can be generated and stored on-board highly secure smart card-based authenticators allowing users to securely carry all their digital credentials wherever they go.

Leverage your PKI Solution for multiple Use Cases



Benefits

- > Transparently operates with any standard certificate-based security application
- > Consolidated & simplified management tools allow users to manage their own cards/tokens and certificates
- > Supports secure access, data encryption and digital signing—all with a single authenticator
- > Streamlines security operations by allowing organizations to deploy multiple security applications on a single platform
- > Allows organizations to use certificate-enabled security capabilities from any client or server thanks to multi-platform support

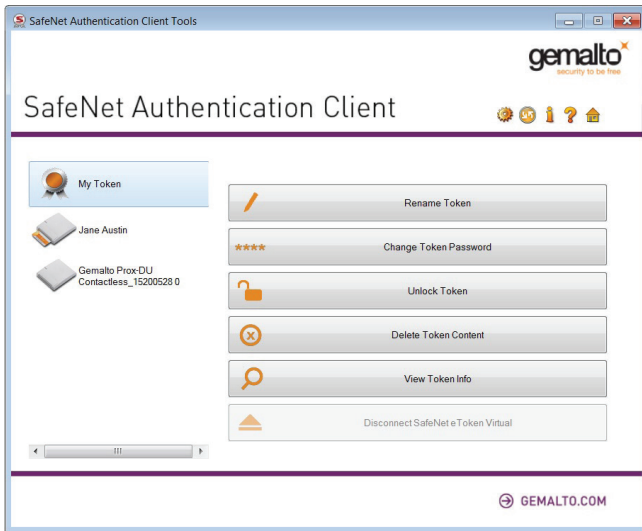
Features

- > Strong two-factor authentication for network and data protection
- > Support for Common Criteria and FIPS certified devices
- > Full support for IDPrime MD smart cards, including Multi-slots support and PIN Quality modifications
- > Support for PIN Pad Readers
- > Support for See What You Sign (SWYS) PIN Pad readers with IDPrime MD smart cards
- > Enables local administration and usage of devices
- > Support for full client customization, including security configuration, policies and user interface
- > Seamless integration with any certificate-enabled application based on industry standard APIs
- > Enables enhanced password management applications for protecting PCs and securing on-site local network access, using eToken Network Logon or Gemalto IDGo Credential Provider
- > Support for Virtual Keyboard enables you to enter passwords without using a physical keyboard, providing protection against kernel level keyloggers
- > Common look and feel across all platforms

A Unified Solution for All Users

SafeNet Authentication Client is available for Windows, Mac, and Linux, so your organization can take full advantage of SafeNet's solutions ranging from identity and access management, certificate-based security, strong authentication, encryption and digital signing, from virtually any device.

SAC management tools reduce helpdesk costs by allowing users to maintain their own cards/tokens and certificates



About Gemalto's SafeNet Identity and Access Management Solutions

Gemalto's industry-leading Identity and Access Management solutions let enterprises centrally manage and secure access to enterprise IT, web and cloud-based applications. Utilizing policy-based SSO and universal authentication methods, enterprises can effectively manage risk, maintain regulatory compliance, gain visibility into all access events and simplify the login experience for their users.

To learn more, visit:

<https://safenet.gemalto.com/access-management/>

** For a full list of backward compatible supported authenticators, please refer to the latest customer release notes.*

Technical Specifications

Supported operating systems

- > Windows Server 2008 R2 SP1 (32-bit, 64-bit)
- > Windows Server 2008 SP2 (32-bit, 64-bit)
- > Windows Server 2012 and 2012 R2 (64-bit)
- > Windows Server 2016 (64-bit)
- > Windows 7 SP1 (32-bit, 64-bit)
- > Windows 8 (32-bit, 64-bit)
- > Windows 8.1 (32-bit, 64-bit)
- > Windows 10 (32-bit, 64-bit)

Mac:

- > MAC OS X 10.11.6, 10.12.3

Linux Distributions:

- > Ubuntu 13.10, 14.04, CentOS 7.3, 6.9, Red Hat 7.3, 6.9, SUSE Linux enterprise desktop 11.3, 12.0, Fedora 20, Debian 7.7

Supported APIs

- > PKCS#11 V2.20, MS CryptoAPI and CNG (CSP, KSP), Mac Keychain (TokenD), PC/SC

Supported cryptographic algorithms

- > 3DES, SHA-256, RSA up to 2048-bit, Elliptic Curve Cryptography (ECC)

Supported CAs

- > Microsoft, Entrust, VeriSign

Supported Browsers

- > Firefox
- > Internet Explorer
- > Microsoft Edge (does not support certificate enrollment)
- > Chrome (does not support certificate enrollment)

Supported SafeNet Authenticators include*:

- > IDCore 30B eToken
- > SafeNet IDPrime 940/3940
- > IDPrime MD 840
- > IDPrime MD 3840
- > IDPrime MD 830-FIPS
- > IDPrime MD 830-ICP
- > IDPrime MD 3810
- > IDPrime MD 3811
- > SafeNet eToken 5300
- > SafeNet eToken 5110
- > SafeNet eToken 5110 CC
- > SafeNet eToken 5110 FIPS
- > SafeNet eToken 5110 FIPS HID
- > SafeNet eToken 5110 HID
- > SafeNet Virtual Token
- > IDClassic 340 (V3)

Contact Us: For all office locations and contact information, please visit safenet.gemalto.com/contact-us

Follow Us: blog.gemalto.com/security

 **GEMALTO.COM**

gemalto
security to be free