

# Sisteme ileo/colostomii



*Sisteme stomice unitare*



Sistem stomic  
cu evacuare **13870**

Dispozitiv din gama **Alternă New Generation**, opac, cu material textil nețesut pe ambele părți, cu flanșă plană, cu diametrul de decupare a flanșei între 12 și 75 mm și un volum de 375 ml, dotat cu un sistem de închidere discret pentru un confort sporit.



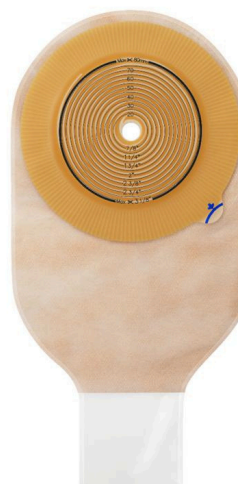
Sistem stomic pentru copii  
cu evacuare **8002**

Dispozitiv din gama **Alternă**, transparent, cu flanșă plană și clip individual de închidere autoadeziv, având diametrul de decupare a flanșei între 10 și 35 mm și un volum de 100 ml, destinat protezării colo/ileostomelor la copii.



Sistem stomic  
cu/fără evacuare **17512 /13594**

Dispozitiv din gama **Alternă New Generation**, opac, cu flanșă Convex Light, având diametrul de decupare între 15 și 43 mm și un volum de 375 ml. Are un sistem de închidere discret și filtru de carbon încorporat, indicat pentru stomele ușor retractate sau situate la nivelul pielii.



Sistem stomic  
cu evacuare **12680**

Dispozitiv din gama **Alternă**, cu flanșă plană, destinat pentru protezarea stomelor de dimensiuni mari, sau imediat post-operator, având un diametru de decupare a flanșei între 10 și 80 mm și un volum de 375 ml.

## Coloplast® стержень для стомы

Стерильный стержень для стомы Coloplast (Колопласт) используется для временной фиксации петлевой стомы.



### Coloplast® стержень для стомы, стерильный

Код товара	Кол-во в розничной упаковке, шт.	Кол-во в экспортной упаковке, шт.
1281401075	10	160

## Filtrodor® фильтр

Угольный фильтр Filtrodor (Филтродор) эффективно нейтрализует запах и выпускает воздух из калоприемника. Угольный фильтр Filtrodor на адгезивной основе предназначен для использования с калоприемниками, не имеющими фильтра.



### Filtrodor® угольный фильтр

Код товара	Кол-во в розничной упаковке, шт.	Кол-во в экспортной упаковке, шт.
50901075	300	3000

## Coloplast® нейтрализатор запаха

Нейтрализатор запаха Coloplast – это бесцветный концентрированный раствор, эффективно нейтрализующий любой запах в течение нескольких часов.



### Coloplast® нейтрализатор запаха

Код товара	Форма выпуска	Кол-во в розничной упаковке, шт.	Кол-во в экспортной упаковке, шт.
6152301075	50 мл	10	80

# *Alterna<sup>®</sup> Free*

*Spiral security with  
more freedom*

*Alterna<sup>®</sup> Free*

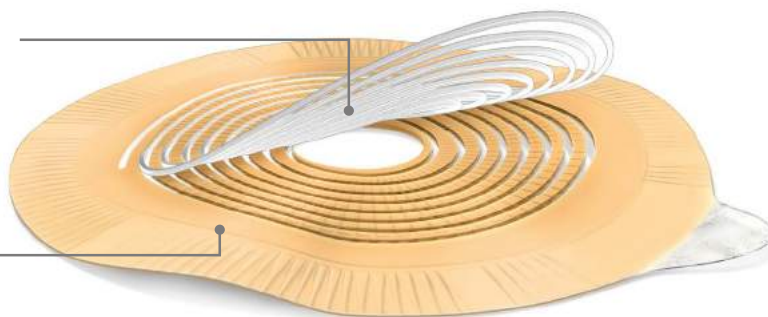
# Alterna<sup>®</sup> Spiral adhesive

The spiral adhesive is unique to Alterna<sup>®</sup>.  
The spiral form helps to ensure that  
Alterna<sup>®</sup> is both secure and skin-friendly.

**NEW**  
Increased  
flexibility

Skin-friendly spiral, keeps  
the skin comfortable and  
healthy

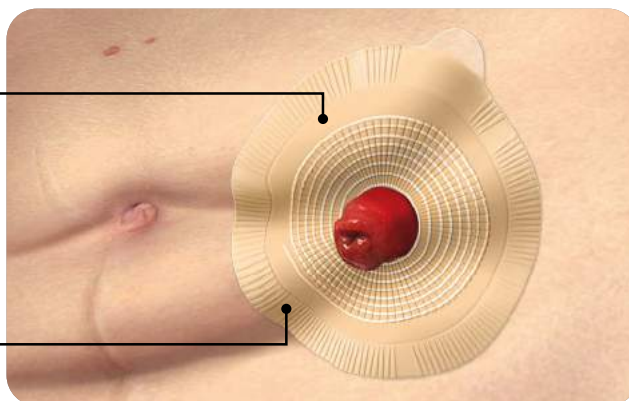
Adheres securely



Now the spiral adhesive is enhanced to provide more comfort.

The adhesive now has extra  
flexibility for a more  
comfortable feel

Six flex-zones in the  
edge-area flex when the body  
does allowing for more  
comfortable movement



# Alterna<sup>®</sup> Closed Bags

## ***Alterna<sup>®</sup> 1-Piece Closed***

Alterna<sup>®</sup> 1-Piece Closed has an integrated multi-layer filter which helps avoid the risk of the pouch ballooning up and causing unnecessary bulges, and neutralises odour. The bag's soft backing fabric, in contact with the skin, features a lining made of soft material, allowing the skin to breathe and dries quickly after a shower or swim. The pouch is made of an odour-proof film.



## ***Alterna<sup>®</sup> 2-Piece Closed***

Alterna<sup>®</sup> 2-piece Closed offers a patented security ring with just a click to lock and unlock. When the system is locked, the pouch is safely and securely fastened to the barrier. The spiral-structure adhesive provides optimal adhesion and superior skin protection. The soft front makes the bag even more discreet. The bags feature an integrated filter, which allows air to escape. The filter is covered by a semi-permeable membrane, which allows air to pass, but not moisture. The membrane itself is covered by a net that allows air and moisture to pass, but not faeces. These two barriers around the active filter component provide double protection. The back of the bag, resting against the skin, features a lining made of extra soft material for comfort and added protection against skin irritation.



# Alterna® Free Drainable Bags

## **Alterna® Free 1-Piece Drainable**

Alterna® 1-Piece Drainable has a hideaway outlet, making the bag easy to empty and clean, and has an integrated Velcro® closure that can be easily tucked away – without the need for a closure clamp. An integrated three-layer filter avoids the risk of the pouch ballooning up and causing unnecessary bulges, and neutralises odour. The bag's soft backing fabric is strong and water repellent, allowing for easy drying after a wash or swim.



Also available without hideaway for use with a clamp.

## **Alterna® Free 2-Piece Drainable with Hideaway**

With Alterna® 2-Piece Drainable, the pouch is fixed securely to the baseplate by a mechanical coupling system. An audible 'click' confirms the secure locking of the pouch to the baseplate.

Before the pouch is locked into position, it can be rotated into the desired position, without having to remove the pouch from the baseplate. A self-adhesive closing clip is supplied with the pouch, giving a closure system that is both secure and easy to clean. The pouch can be removed from the spiral adhesive baseplate, allowing the pouch to be changed more often than the adhesive baseplate.





# Alterna® Urostomy Bags

## **Alterna® 1-Piece Urostomy Bag**

Alterna® 1-Piece Urostomy has a range of features designed to offer comfort and discretion. A secure and easy to use soft plastic outlet is easy to handle, and design of the pouch ensures there is no residual urine left in the pouch after emptying. The non-return valve prevents the urine from washing over the stoma, reducing the risk of urinary infections.



## **Alterna® 2-Piece Urostomy Bag**

Alterna® 2-piece Urostomy pouch integrates mechanical coupling with extra reassurance. The pouch is fixed securely to the baseplate by a mechanical coupling system. An audible 'click' confirms the secure locking of the pouch to the baseplate. The bag's secure and easy to use outlet is easy to handle, and design of the pouch ensures there is no residual urine left in the pouch after emptying. A non-return valve prevents the urine from washing over the stoma, reducing the risk of urinary infections.



# Alterna® Baseplates

## **Alterna® 1-Piece (Integrated Baseplate)**

Alterna® 1-piece appliances are available with flat or convex baseplates. The broad assortment consists of various hole sizes which can be customised, with pouches in a variety of sizes available in transparent or opaque colour.

Alterna® 1-piece is available with convexity, designed to help a stoma that is difficult to manage, for example a stoma that is retracted, or located in a deep skin fold or scar. It applies moderate to high pressure on the peristomal skin to reduce the risk of leakage by allowing the stoma to protrude. Ask your stoma care nurse for more information about convexity.

## **Alterna® 2-Piece Baseplates**

Alterna® 2-piece is available with a standard wear and extended wear baseplate, flat or with convexity.

**The broad range of baseplates are available in Custom-Cut:**

### **Custom-Cut**

Custom-cut baseplates consist of a starter hole which can be customised and cut based on your own baseplate dimensions, ensuring a perfect and comfortable fit.





# Alterna® Product Overview

Product Code	Product Description	Size	Colour	Pack Size
<b>Alterna® One Piece Closed</b>				
174030	Alterna® 1-pc Closed bag, Maxi, with Filter (025160)	35 mm	Opaque	30
174040	Alterna® 1-pc Closed bag, Maxi, with Filter (025170)	40 mm	Opaque	30
174070	Alterna® 1-pc Closed bag, Maxi, with Filter	10-70 mm	Transparent	30
174040	Alterna® 1-pc Closed bag, Maxi, with Filter (025110)	20-55 mm	Opaque	30
174000	Alterna® 1-pc Closed bag, Maxi, with Filter (025110)	20-55 mm	Opaque	30
174020	Alterna® 1-pc Closed bag, Maxi, with Filter (025150)	30 mm	Opaque	30
174050	Alterna® 1- pc Closed bag, Maxi, with Filter	10-70 mm	Opaque	30
174100	Alterna® 1-pc Closed bag, Maxi, with Filter (024810)	20 -55 mm	Transparent	30
174200	Alterna® 1-pc Closed bag, Maxi, with Filter (024610)	20 -55 mm	Opaque	30
<b>Alterna® One Piece Drainable</b>				
174500	Alterna® 1-pc Open bag, Maxi, with Filter (025200)	10-70 mm	Opaque	30
174550	Alterna® 1-pc Open bag, Maxi, with Filter (024900)	10-70 mm	Transparent	30
174610	Alterna® 1-pc Open bag, Midi, with Filter (024500)	10-55 mm	Transparent	30
175000	Alterna® Free 1-pc Open bag with Hide-Away, Maxi, with Filter (138700)	12-70 mm	Opaque	30
175010	Alterna® Free 1-pc Open bag with Hide-Away, Maxi, with Filter (138600)	12-70 mm	Transparent	30
175110	Alterna® Free 1-pc Open bag, Convex, with Hide-Away, Maxi, with Filter (141060)	15-43 mm	Opaque	10
175150	Alterna® Free 1-pc Open bag, Convex, with Hide-Away, Maxi, with Filter (141030)	15-43 mm	Transparent	10
174700	Alterna® 1-pc Open bag, Convex, Maxi, with Filter (469480)	15-43 mm	Opaque	10
174710	Alterna® 1-pc Open bag, Convex, Maxi, with Filter (469380)	15-43 mm	Transparent	10
<b>Alterna® One Piece URO</b>				
174760	Alterna® 1-pc Urostomy bag, Maxi (055800)	10-55 mm	Opaque	30
174770	Alterna® 1-pc Urostomy bag, Maxi (055850)	10-55 mm	Transparent	30
174790	Alterna® 1-pc Urostomy bag, Midi (055750)	10-55 mm	Transparent	30
174810	Alterna® 1-pc Urostomy bag, Convex, Maxi (125950)	15-33 mm	Transparent	10
174820	Alterna® 1-pc Urostomy bag, Convex, Maxi (125960)	15-43 mm	Transparent	10
<b>Alterna® Paediatric</b>				
174670	Alterna® 1-pc Open bag, Children, with Filter	10-35 mm	Transparent	30
174800	Alterna® 1-pc Urostomy bag, Children (080090)	10-35 mm	Transparent	20