

ordering information

A diversity of sizes available

Digitally signed by Voronțov Alexei
Date: 2023.10.13 01:02:47 EEST
Reason: MoldSign Signature
Location: Moldova



Silk Vista

Reference	Nominal stent		Unconstrained stent		Delivery catheter I.D.
	Ø (mm)	Length (mm)	Ø (mm)	Length (mm)	
SILK_V_3,50X15	3,50	15	3,75	11,50	.021"
SILK_V_3,50X20		20		15,50	
SILK_V_3,50X25		25		19,50	
SILK_V_3,50X30		30		22,50	
SILK_V_3,50X35		35		26,50	
SILK_V_3,50X40		40		30	
SILK_V_3,75X15	3,75	15	4,00	12	
SILK_V_3,75X20		20		15	
SILK_V_3,75X25		25		19	
SILK_V_3,75X30		30		22	
SILK_V_4,00X15	4,00	15	4,25	11,50	
SILK_V_4,00X20		20		15	
SILK_V_4,00X25		25		18,50	
SILK_V_4,00X30		30		22	
SILK_V_4,25X15	4,25	15	4,50	11,50	
SILK_V_4,25X20		20		15	
SILK_V_4,25X25		25		18	
SILK_V_4,25X30		30		22,50	
SILK_V_4,50X15	4,50	15	4,75	11,50	
SILK_V_4,50X20		20		15,50	
SILK_V_4,50X25		25		19	
SILK_V_4,50X30		30		22,50	
SILK_V_4,75X15	4,75	15	5,00	11,50	
SILK_V_4,75X20		20		15	
SILK_V_4,75X25		25		18	
SILK_V_4,75X30		30		21	

*Internal data available

**compatibility with .021"

The self-expandable Silk vista stents are designed for the treatment of intracranial aneurysms. Class III CE0297 in compliance with Medical Device Directive (MDD 93/42/EEC amended by 2007/47/EC). Manufactured by BALT Extrusion S.A.S. Carefully read the instructions for use before use. First CE marking:2020. The content of this document, in particular data, information, trademarks and logos is BALT SAS and affiliates's sole property. © 2020 BALT SAS and affiliates, all rights reserved. All representation and/or reproduction, whether in part or in full, is forbidden and would be considered a violation of BALT SAS and affiliates' copyrights and other intellectual proprietary rights. This document with associated pictures is non-contractual and is solely dedicated to healthcare professionals and BALT's distributors (BALT's supplier's distributors). The products commercialized by BALT shall exclusively be used in accordance with the instructions for use included in the boxes. DC056GB (06/2020)

Balt

10, rue de la Croix Vigneron, 95160 Montmorency France

Tél. : +33 (0)1 39 89 46 41

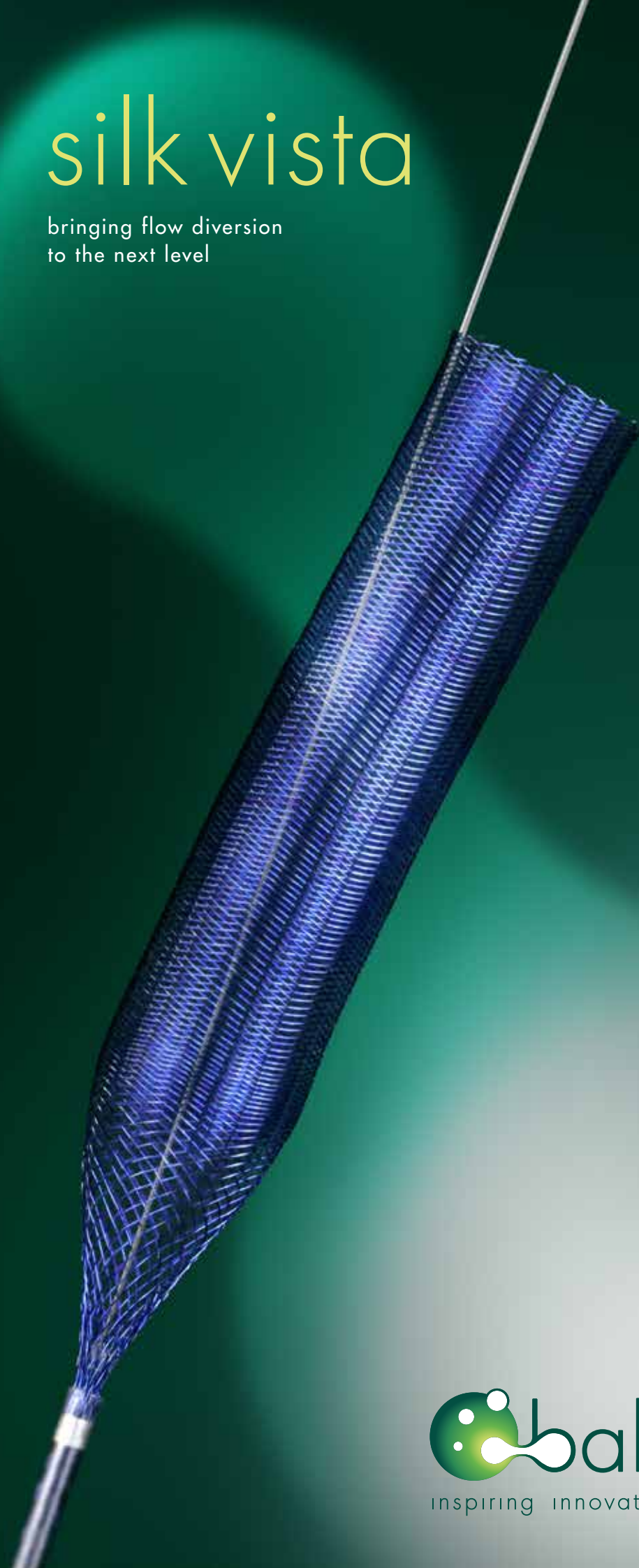
Fax : +33 (0)1 34 17 03 46

www.balt-corp.com



silk vista

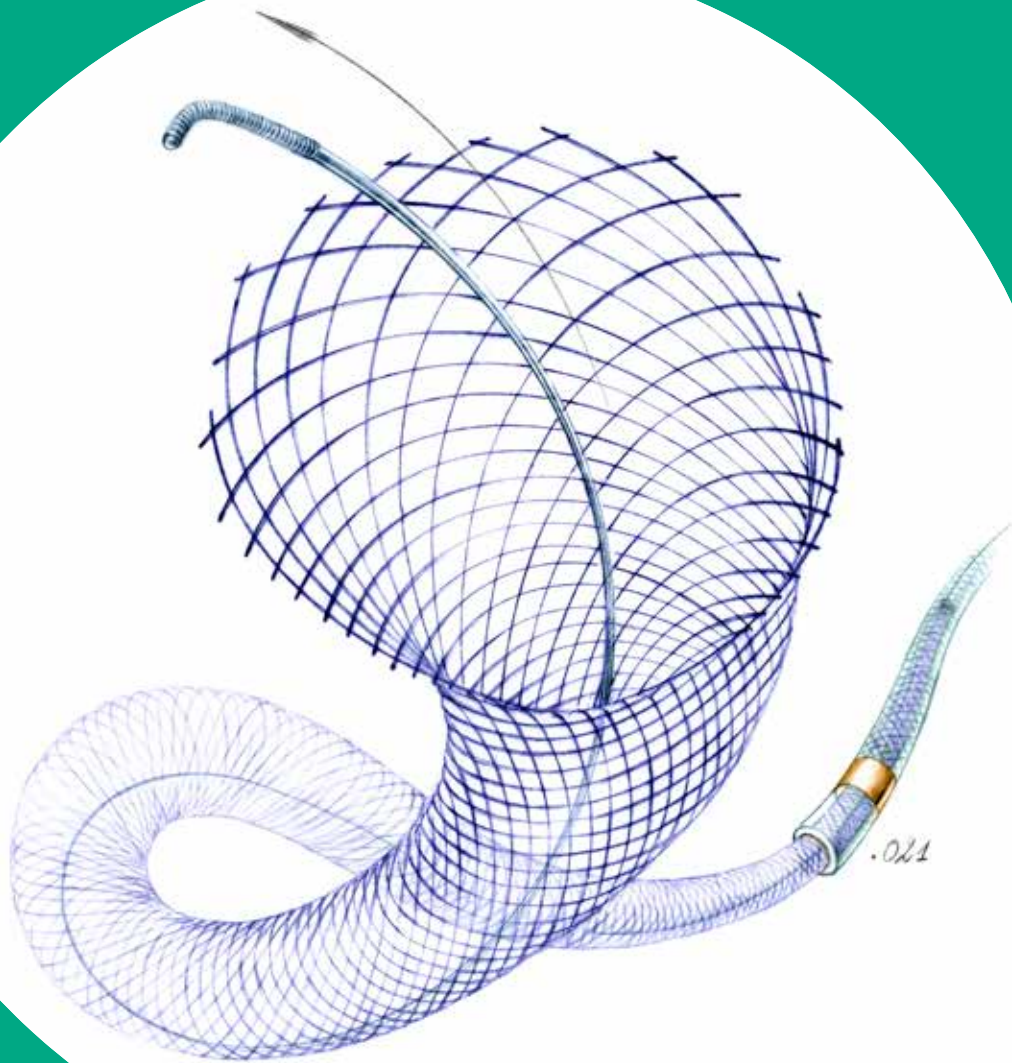
bringing flow diversion
to the next level





Advanced flow diversion, enhanced navigability**

Self-expandable flow diverter designed for the treatment of intracranial aneurysms.



high
wall apposition force*

.021"

delivery catheter
for Ø up to 5,00mm
unconstrained

aneurysm treatment

Leading design, towards
more control

Bringing a high wall apposition force* for
a similar chronic outward force
To improve wall apposition while
ensuring an atraumatic & smooth
opening of the stent

Homogenous stent surface
Improved compared to previous
generation of FD*

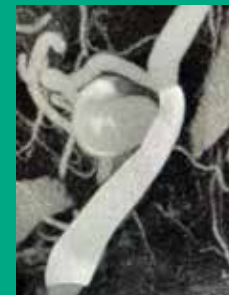
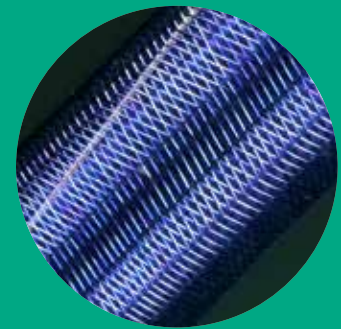
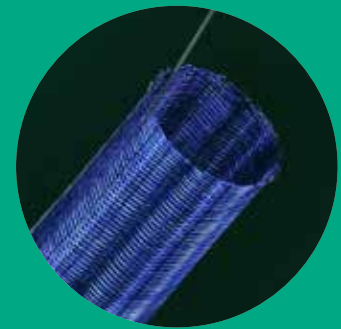
Escalating flow diversion*
Thanks to an increased mesh density
of the 48 braided wires

Upgraded navigability,
widening opportunities

Compatibility
All references are delivered through a
.021" catheter for Ø up to 5,00mm
unconstrained

Advanced drawn filled tubes
technology

Entirely visible device
To enhance the radiopacity of each &
every wire of the stent



with the courtesy of Dr Pereira, Canada

ordering information

A broad portfolio of low profile flow diverters.

Reference	Nominal stent		Unconstrained stent		Delivery catheter I.D.
	Ø (mm)	Length (mm)	Ø (mm)	Length (mm)	
SILK_V_2,25x10	2,25	10,5	2,5	8	.017"
SILK_V_2,25x15	2,25	16	2,5	12	.017"
SILK_V_2,25x20	2,25	22	2,5	15,5	.017"
SILK_V_2,50x10	2,50	10	2,75	8	.017"
SILK_V_2,50x15	2,50	15	2,75	13	.017"
SILK_V_2,50x20	2,50	20	2,75	15	.017"
SILK_V_2,75x10	2,75	12,5	3,0	9	.017"
SILK_V_2,75x15	2,75	17	3,0	12	.017"
SILK_V_2,75x20	2,75	22	3,0	15	.017"
SILK_V_2,75x25	2,75	26,5	3,0	18,5	.017"
SILK_V_3,00x10	3,00	10	3,25	7	.017"
SILK_V_3,00x15	3,00	15	3,25	10,5	.017"
SILK_V_3,00x20	3,00	20	3,25	13,5	.017"
SILK_V_3,00x25	3,00	25	3,25	17	.017"
SILK_V_3,25x10	3,25	11	3,5	8,5	.017"
SILK_V_3,25x15	3,25	16,5	3,5	12,5	.017"
SILK_V_3,25x20	3,25	21	3,5	15	.017"
SILK_V_3,25x25	3,25	26	3,5	18	.017"

Silk Vista Baby

The self-expandable Silk Vista Baby stents are designed for the treatment of intracranial aneurysms. Class III CE0297 in compliance with Medical Device Directive (MDD 93/42/EEC amended by 2007/47/EC). Manufactured by BALT Extrusion S.A.S. Carefully read the instructions for use before use. First CE marking:2018.

The content of this document, in particular data, information, trademarks and logos is BALT S.A.S and affiliates' sole property. ©2020 BALT S.A.S and affiliates, all rights reserved. Consequently, all representation and/ or reproduction, whether in part or in full, is forbidden and would be considered a violation of BALT S.A.S and affiliates' copyrights and other intellectual proprietary rights. This document with associated pictures is non-contractual and is solely dedicated to healthcare professionals and BALT's distributors (BALT's supplier's distributors). The products commercialized by BALT shall exclusively be used in accordance with the instructions for use included in the boxes. DC038GB (06/2020).

Balt

10, rue de la Croix Vigneron, 95160 Montmorency France

Tél. : +33 (0)1 39 89 46 41

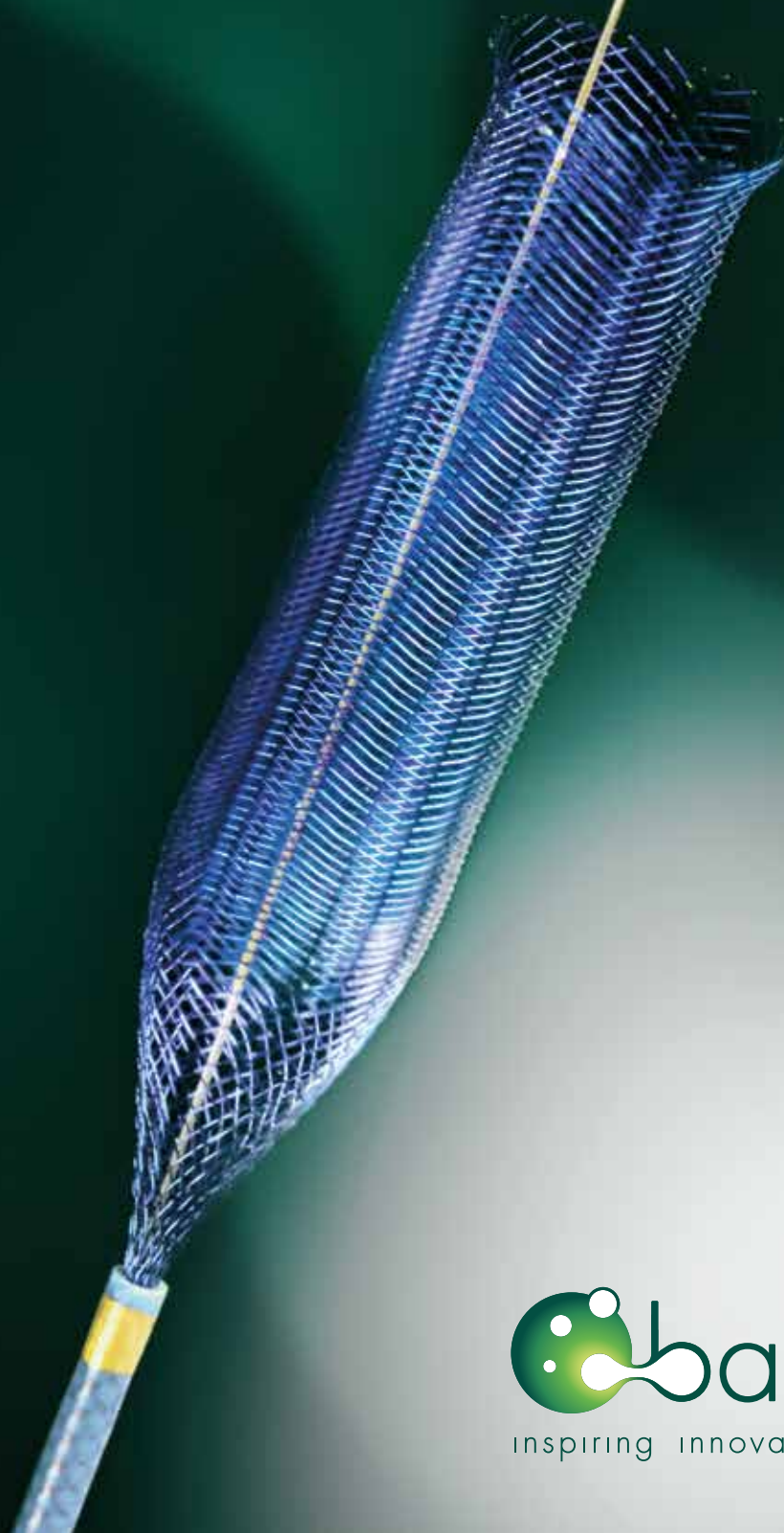
Fax : +33 (0)1 34 17 03 46

www.balt-corp.com



silk vista baby

a gateway to treat smaller arteries





silkvista baby

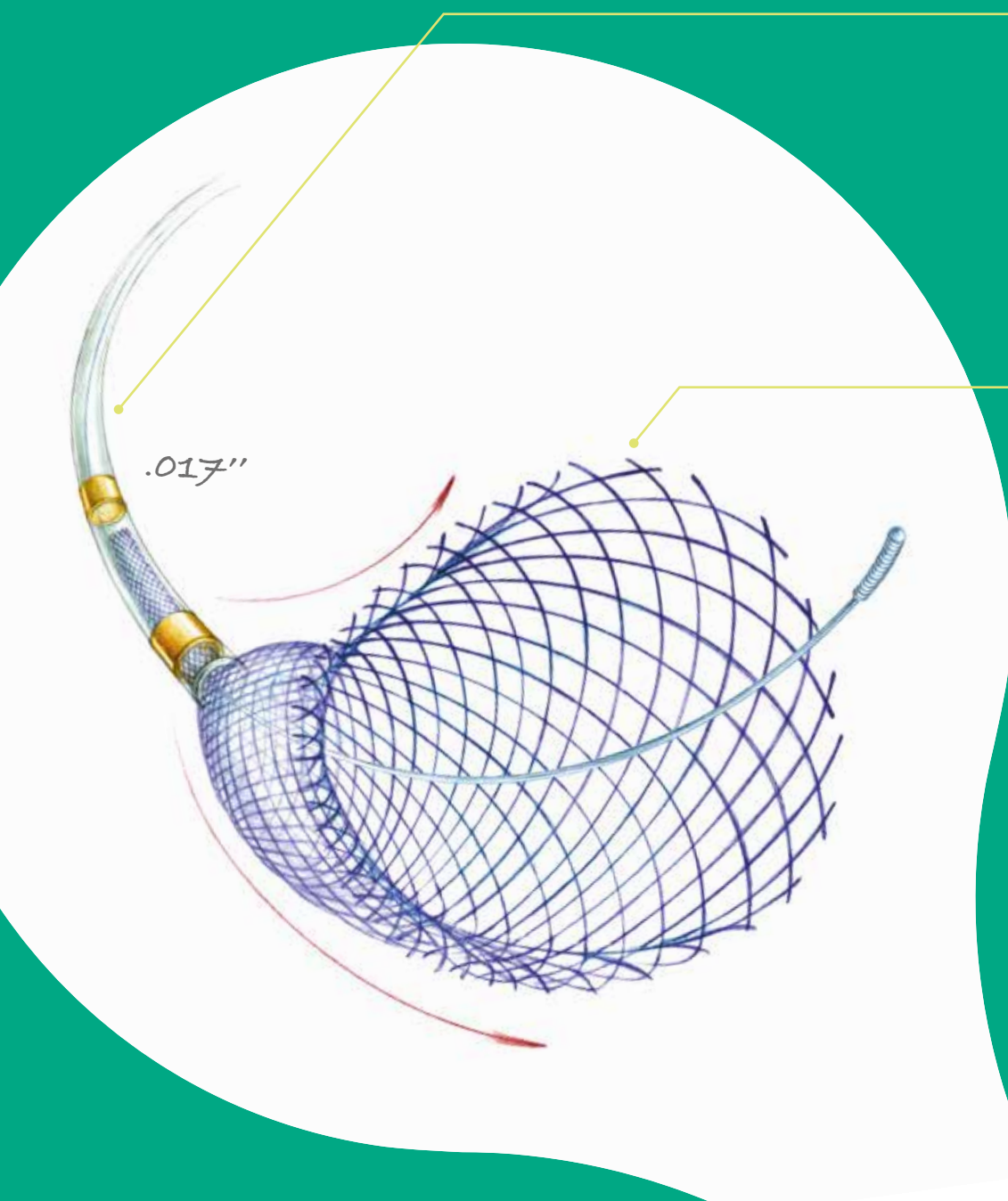
Advanced flow diversion, enhanced navigability

Low profile flow diverter designed for the treatment of intracranial aneurysms

.017"

low profile
flow diverter

aneurysm treatment



● Widen opportunities in distal vasculature

Navigability
only flow diverter deliverable through a .017" microcatheter

Trackability
improved pusher profile to achieve the best compromise between flexibility and pushability

● Breakthrough design to improve stent behaviour & aneurysm exclusion

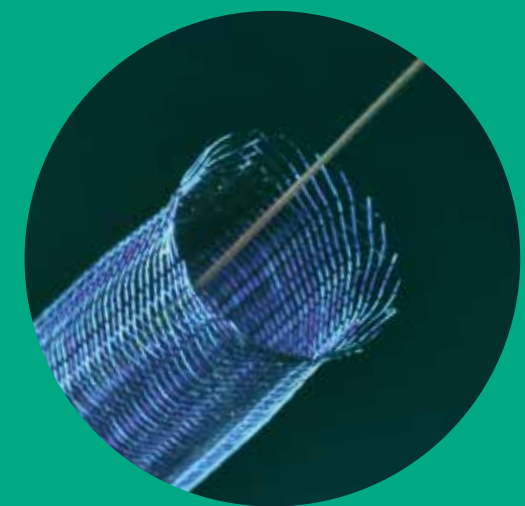
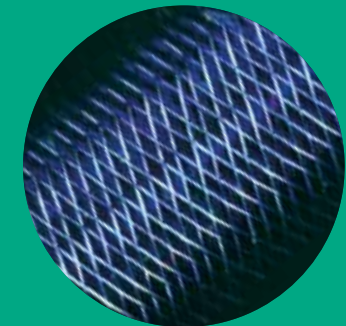
Smoother stent opening
given by the homogeneous mesh surface

Gentle wall apposition
as a result of the rounded short flared ends

Flow diversion escalation
thanks to an increased mesh density of the 48 braided wires

Precise & controlled deployment

Radiopacity
enhanced visibility of the entire device due to DFT* wires



48

braided
wires

*Drawn filled tube

Design

Technical features

Design asemănător unei plase împletite din 48 fire ce menține o forță circumferențială permanentă

48 braided wires mesh-like design

→ Escalating flow diversion

Maintain chronic outward force

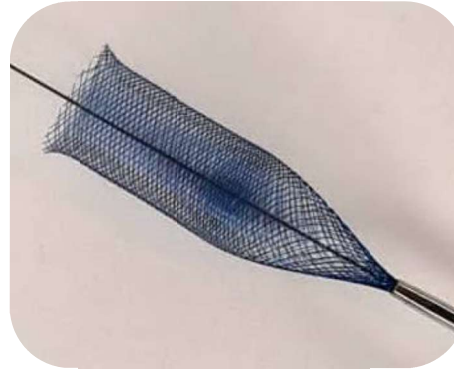
→ Ensure **uniform wall apposition** while offering an **atraumatic opening**

Uniform mesh surface

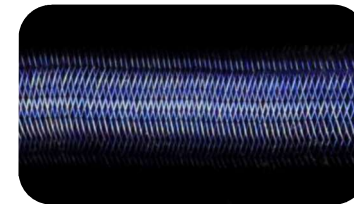
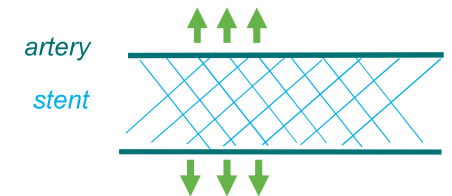
→ **Smoother stent opening**

Homogenous stent surface

→ **Surface treatment improved** compared to previous generation of FD



Chronic outward force



<https://balt-product.com/silkvista/>

The content of this document, in particular data, information, trademarks and logos is BALT SAS and affiliates' sole property. ©2022 BALT and affiliates, all rights reserved. Consequently, all representation and/or reproduction, whether in part or in full, is forbidden and would be considered a violation of BALT SAS and affiliates' copyrights and other intellectual proprietary rights. This document with associated pictures is non-contractual and is solely dedicated to BALT's distributors (BALT's supplier's distributors). The products commercialized by BALT shall exclusively be used in accordance with the package inserts which have been updated and included in the boxes. The distribution, the sale and the use of BALT's products is under distributor's liability.

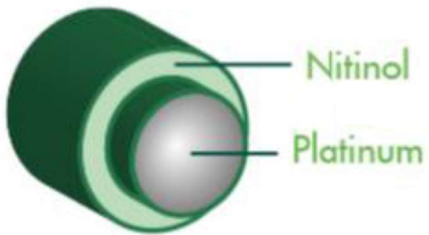


Visibility

Technical features

Cele 48 de fire sunt formate din Nitinol la exterior și Platinum la interior ce asigură o vizibilitate amplificată pe toată lungimea stentului

48 Drawn Filled Tubing (DFT) Nitinol / Platinum wires:

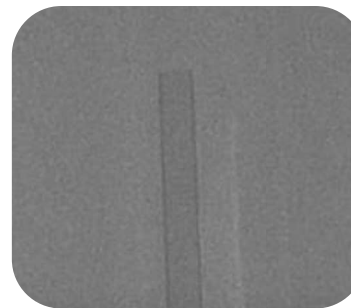
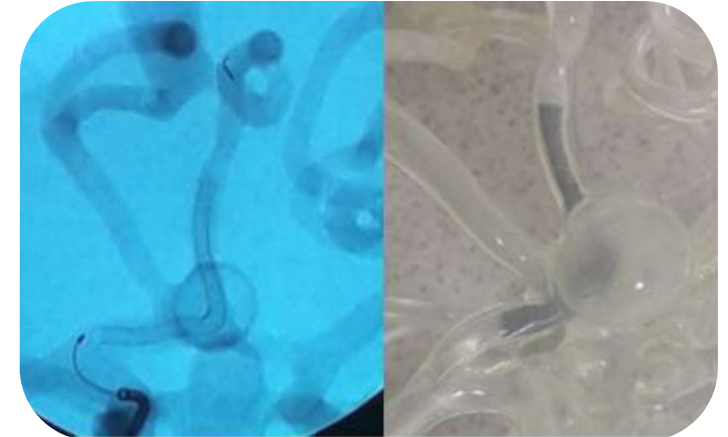


- ✓ Allowing the visibility of the entire device
- ✓ Allowing the removal of the radiopaque markers (compare to previous generation of FD)

DFT wire

→ Entirely visible device

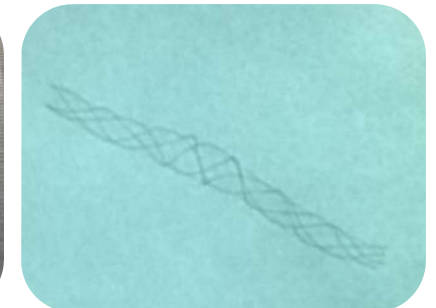
→ To control deployment & apposition



silk vista



silk vista baby



Silk+

The content of this document, in particular data, information, trademarks and logos is BALT SAS and affiliates' sole property. ©2022 BALT and affiliates, all rights reserved. Consequently, all representation and/or reproduction, whether in part or in full, is forbidden and would be considered a violation of BALT SAS and affiliates' copyrights and other intellectual proprietary rights. This document with associated pictures is non-contractual and is solely dedicated to BALT's distributors (BALT's supplier's distributors). The products commercialized by BALT shall exclusively be used in accordance with the package inserts which have been updated and included in the boxes. The distribution, the sale and the use of BALT's products is under distributor's liability.



Delivery system

Technical features

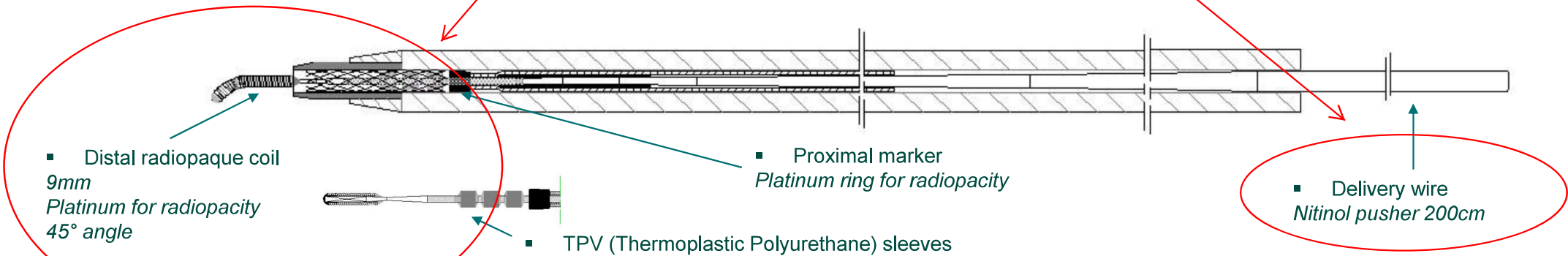
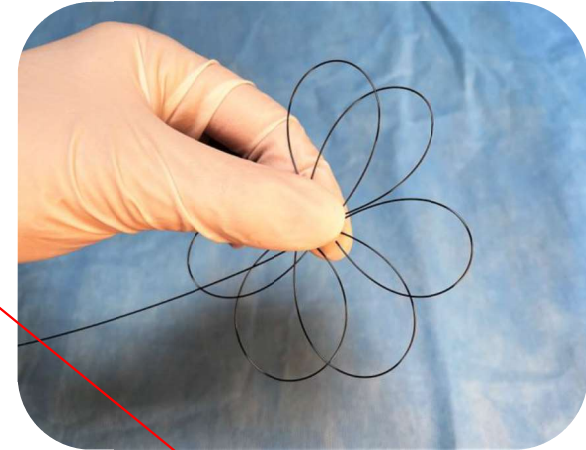
Nitinol pusher wire

→ **Flexible & resistant to deformation for pushability**

Pusher distal tip with small O.D.

→ **Radiopaque coil to be visible**

Sistemul de livrare conține un ghid-pusher din nitinol, 200cm lungime, ce conține în structura sa fire împletite radioopace de 9mm la capătul distal pentru o vizibilitate sporită în timpul amplasării stentului și marker proximal.



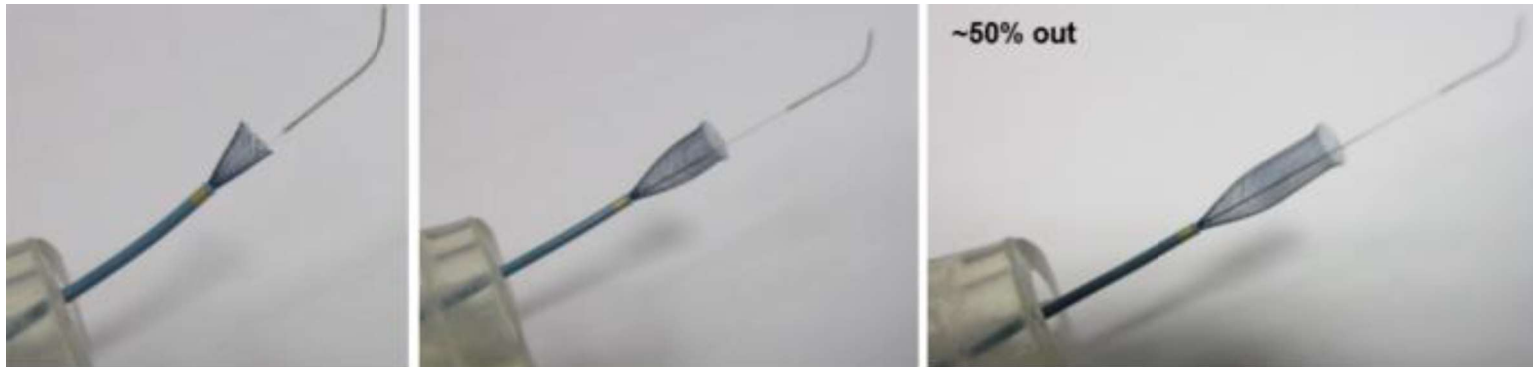
The content of this document, in particular data, information, trademarks and logos is BALT SAS and affiliates' sole property. ©2022 BALT and affiliates, all rights reserved. Consequently, all representation and/or reproduction, whether in part or in full, is forbidden and would be considered a violation of BALT SAS and affiliates' copyrights and other intellectual proprietary rights. This document with associated pictures is non-contractual and is solely dedicated to BALT's distributors (BALT's supplier's distributors). The products commercialized by BALT shall exclusively be used in accordance with the package inserts which have been updated and included in the boxes. The distribution, the sale and the use of BALT's products is under distributor's liability.



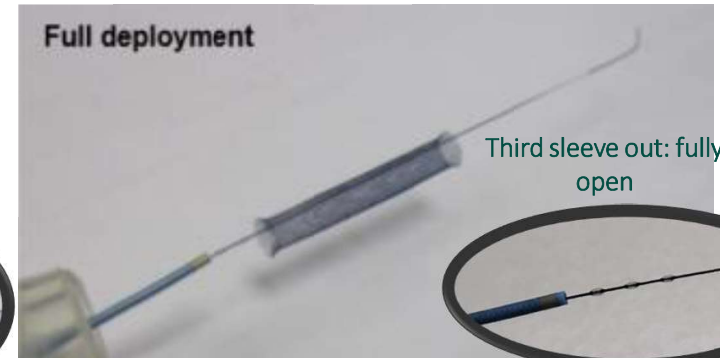
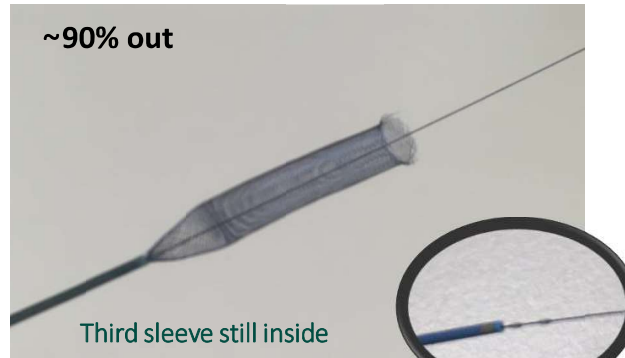
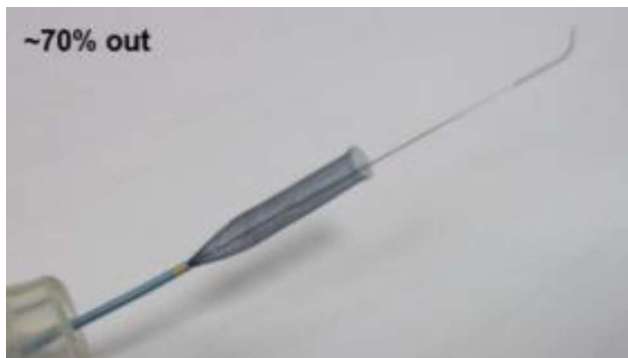
Stent deployment

Technical features

Stentul poate fi retras
pină la 90% în sistemul
de livrare în cazul
repoziționării acestuia



Resheatability : up to 90%



The content of this document, in particular data, information, trademarks and logos is BALT SAS and affiliates' sole property. ©2022 BALT and affiliates, all rights reserved, Consequently, all representation and/or reproduction, whether in part or in full, is forbidden and would be considered a violation of BALT SAS and affiliates' copyrights and other intellectual proprietary rights. This document with associated pictures is non-contractual and is solely dedicated to BALT's distributors (BALT's supplier's distributors). The products commercialized by BALT shall exclusively be used in accordance with the package inserts which have been updated and included in the boxes. The distribution, the sale and the use of BALT's products is under distributor's liability.



intracranial self-expandable flow diverters

silk vista baby

Reference	Nominal stent Ø (mm)	Stent's length at nominal Ø (mm)	Unconstrained stent		Delivery catheters ID
			Ø (mm)	length (mm)	
SILK_V_2.25X10	2.25	10.5	2.5	8	.017"
SILK_V_2.25X15		16		12	
SILK_V_2.25X20		22		15.5	
SILK_V_2.50X10	2.50	10	2.75	8	.017"
SILK_V_2.50X15		15		13	
SILK_V_2.50X20		20		15	
SILK_V_2.75X10	2.75	12.5	3	9	.017"
SILK_V_2.75X15		17		12	
SILK_V_2.75X20		22		15	
SILK_V_2.75X25		26.5		18.5	
SILK_V_3.00X10	3.00	10	3.25	7	.017"
SILK_V_3.00X15		15		10.5	
SILK_V_3.00X20		20		13.5	
SILK_V_3.00X25		25		17	
SILK_V_3.25X10	3.25	11	3.5	8.5	.017"
SILK_V_3.25X15		16.5		12.5	
SILK_V_3.25X20		21		15	
SILK_V_3.25X25		26		18	

silk vista

Reference	Nominal stent Ø (mm)	Stent's length at nominal Ø (mm)	Unconstrained stent		Delivery catheters ID
			Ø (mm)	length (mm)	
SILK_V_3.50X15	3.50	15	3.75	11.50	.021"
SILK_V_3.50X20		20		15.50	
SILK_V_3.50X25		25		19.50	
SILK_V_3.50X30		30		22.50	
SILK_V_3.50X35		35		26.50	
SILK_V_3.50X40		40		30	
SILK_V_3.75X15	3.75	15	4.00	12	.021"
SILK_V_3.75X20		20		15	
SILK_V_3.75X25		25		19	
SILK_V_3.75X30		30		22	
SILK_V_4.00X15	4.00	15	4.25	11.50	.021"
SILK_V_4.00X20		20		15	
SILK_V_4.00X25		25		18.50	
SILK_V_4.00X30		30		22	
SILK_V_4.25X15	4.25	15	4.50	11.50	.021"
SILK_V_4.25X20		20		15	
SILK_V_4.25X25		25		18	
SILK_V_4.25X30		30		22.50	
SILK_V_4.50X15	4.50	15	4.75	11.50	.021"
SILK_V_4.50X20		20		15.50	
SILK_V_4.50X25		25		19	
SILK_V_4.50X30		30		22.50	
SILK_V_4.75X15	4.75	15	5.00	11.50	.021"
SILK_V_4.75X20		20		15	
SILK_V_4.75X25		25		18	
SILK_V_4.75X30		30		21	



silk+

packaging includes a vasco+

Reference	Vessel Ø (mm)	Stent's length at nominal Ø (mm)	Unconstrained stent		Delivery catheters
			Ø (mm)	length (mm)	
SILK2.0x10*	1.50 to 2.25	10	2.5	6	vasco+21
SILK2.0x15		15		10	
SILK2.0x20		20		11	
SILK2.5x10*	2.00 to 2.75	10	3	7	vasco+21
SILK2.5x15		15		10	
SILK2.5x20		20		13	
SILK2.5x25		25		25	
SILK3.0x10*	2.50 to 3.25	10	3.5	7	vasco+21
SILK3.0x15		15		10	
SILK3.0x20		20		13	
SILK3.0x25		25		16	
SILK3.0x30		30		19	
SILK3.5x10*	3.00 to 3.75	10	4	9	vasco+21
SILK3.5x15		15		11	
SILK3.5x20		20		12	
SILK3.5x25		25		14	
SILK3.5x30		30		15	
SILK3.5x35		35		17	
SILK4.0x15	3.50 to 4.25	15	4.5	10	vasco+21
SILK4.0x20		20		12	
SILK4.0x25		25		14	
SILK4.0x30		30		16	
SILK4.0x35		35		18	
SILK4.0x40		40		20	
SILK4.5x15	4.00 to 4.75	15	5	8	vasco+21
SILK4.5x20		20		10	
SILK4.5x25		25		12	
SILK4.5x30		30		15	
SILK4.5x35		35		17	
SILK4.5x40		40		19	
SILK5.0x20*	4.50 to 5.25	20	5.5	9	vasco+25
SILK5.0x25		25		11	
SILK5.0x30		30		13	
SILK5.0x40		40		17	
SILK5.5x25	5.00 to 5.75	25	6	11	
SILK5.5x30		30		13	
SILK5.5x40		40		17	
SILK5.5x50*		50		23	

tapered silk+

packaging includes a vasco+

Reference	Vessel Ø (mm)	Vessel Ø distal (mm)	Stent's length at nominal Ø proximal (mm)	Stent length at nominal Ø distal (mm)	Unconstrained stent		Delivery catheters
					Ø (mm)	length (mm)	
SILKP4.0D3.0x30	3.50 to 4.25	2.50 to 3.25	12	10	4.5/3.5	15	vasco+21
SILKP4.5D3.0x25	4.00 to 4.75	2.50 to 3.25	12	10	5.0/3.5	20	
SILKP4.5D3.5x30	4.00 to 4.75	3.00 to 3.75	11	15	5.0/4.0	16	

*manufactured on demand

