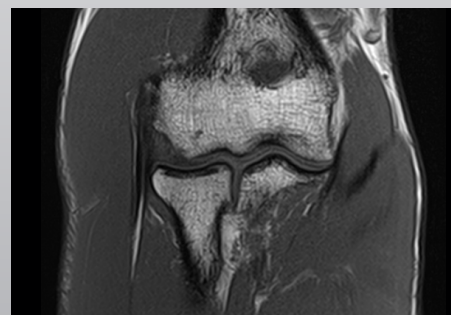
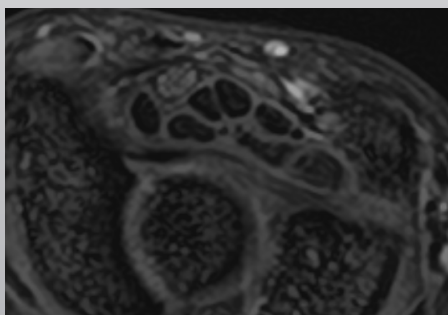
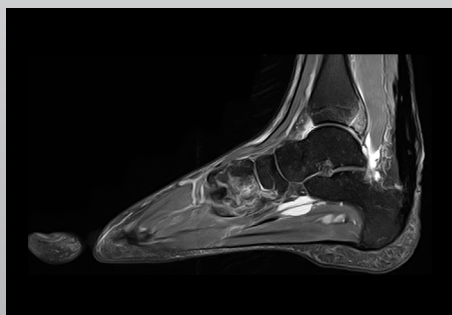


Canon



Vantage Orian

16ch Flex SPEEDER Large



Dimension and Weight

	Dimensions	Weight
16ch Flex SPEEDER Large	701 × 310 × 45 mm	1.6 kg

General

- 16-element array coil design.
- Fully soft and flexible to optimally fit each region, providing high-quality images a wide range of anatomical regions.
- 16ch Flex SPEEDER Pad Kit* allows easy patient settings.
- SPEEDER compatible in all direction.
- Smoothly combined with Atlas SPEEDER Spine.
- No coil tuning.

* 16ch Flex SPEEDER Pad Kit is option.

Applications

Head/Spine/Shoulder/Elbow/Wrist/Abdomen/Thigh/Knee/Foot

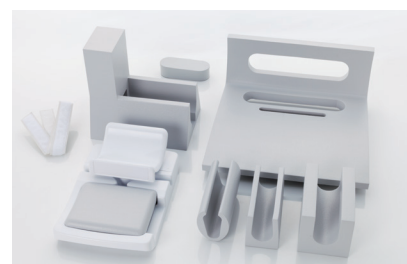
Patient setting examples



Shoulder



Spine



Optional 16ch Flex SPEEDER Pad Kit



Pelvis



Thigh

Front Cover Clinical Images

Left image: Courtesy of GIE Var Ouest, Ollioules, France

Right image: Courtesy of Clinica Creu Blanca, Spain

CANON MEDICAL SYSTEMS CORPORATION

<https://global.medical.canon>

©Canon Medical Systems Corporation 2019. All rights reserved.

Design and specifications are subject to change without notice.

Model number: MJAJ-227A MCAMR0152EA 2019-03 CMSC/Produced in Japan

Canon Medical Systems Corporation meets internationally recognized standards for Quality Management System ISO 9001, ISO 13485. Canon Medical Systems Corporation meets the Environmental Management System standard ISO 14001.

Vantage Orian, Atlas SPEEDER and Made for Life are trademarks of Canon Medical Systems Corporation.

Disclaimer: Some features presented in this brochure may not be commercially available on all systems shown or may require the purchase of additional options. Please contact your local representative from Canon Medical Systems for details.

Made For life