

# D1524R

## High-speed Refrigerated Micro Centrifuge



## Applications

Ideal for centrifugation of temperature sensitive samples, such as live cells, animals or proteins. It allows them to be used in a multitude of applications, including pelleting of DNA and RNA samples, pelleting of PCR amplified nucleic acids, separation of antibody and protein precipitates, performing enzymatic tests, removing cell debris from cell homogenates, and achieving bacterial and yeast cell fractionation.

## Features

- Electronic Magnetic door locking system - the lid can be closed with one hand soft touch
- Precooling, the compressor automatically starts cooling as long as the set temperature is lower than the ambient temperature
- Sound indicator at the end of running.
- Temperature range -20°C to 40°C
- Short pre-cooling time of only 7 minutes from room temperature to 4°C
- Up to 9 program storage capacity
- 3-layer sealed rotors ensure safe centrifugation
- High-strength aluminum alloy rotor can be fully autoclavable at 121°C
- Rotor imbalance detection alarm
- Adjustable acceleration/deceleration at 9 levels allows gentle braking at low speed for better separation
- Five rotors with 0.2mL, 0.5mL, 1.5mL, 2mL and 5mL centrifuge tubes/ PCR tubes capacity
- An external condensation tank prevents water accumulation within centrifuge chamber



Specifications	D1524R
Max. Speed	15,000rpm (200-15,000rpm) in 100rpm increments.
Max. RCF	21,380 × g, step: 10 × g
Capacity	1.5/2mL × 24, 0.2/0.5mL × 36, PCR-8 strips × 4, 5mL × 12, 5mL × 18
Temperature setting	-20°C - 40°C
Run Time	30s-99 min; HOLD (continuous running)
Acceleration and deceleration time	25s ↑ 25s ↓
Motor Type	Brushless DC motor
Safety Performance	Dual door lock, over-speed detection, over-temperature detection with Internal diagnosis system.
Power Requirements	Single-phase, 100-120V/200-240V, 50Hz/60Hz.500W
Noise Level	≤56dB
Dimensions[WxDxH]	332 × 553 × 283mm
Weight	30kg
Other functions	Rotation speed/RCF switchover, inching operation, running process indicator, sound alert. Adjustable acceleration/deceleration at 9 levels program storage capacity.

# D3024

## High Speed Micro Centrifuge



## Features

- Double cooling air design ensures fast cooling of the rotor and low energy consumption
- 3-layer sealed rotors ensure safe centrifugation
- Brushless motor drive, maintenance free
- Safety features include door interlock; excessive speed and temperature detection; automatic self-diagnostics
- Outstanding aluminum alloy rotors fully autoclavable at 121°C temperature and high pressure disinfection
- Five rotors are optional complete with 24 places 1.5/2.0mL tubes, 5.0mL, 0.2mL and 0.5mL tubes with adapters

## Applications

Suitable for numerous biological, chemistry, clinical and research applications including molecular biology, clinical chemistry labs, wide variety of microbiology applications, such as DNA, RNA or protein isolation and many more.

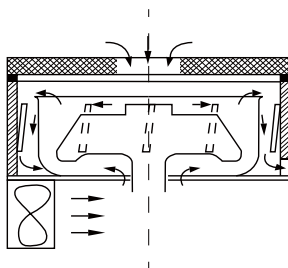


Brushless DC motor



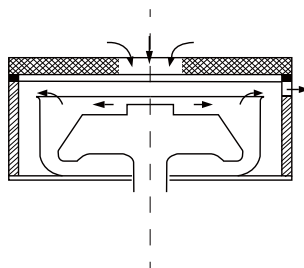
Wide range of rotors

### Effective Ventilation System



Double cooling air design, enforcing air cooling from both the upper and lower side for the rotor.

### Conventional design



Limited ventilation on the upper side of the rotor

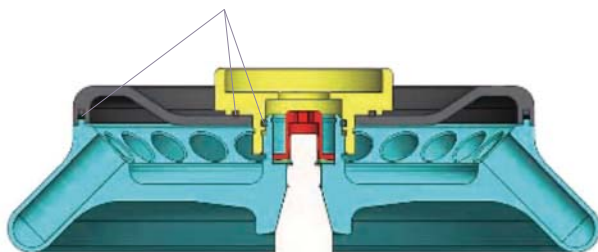


DLAB rotors are manufactured from military-industrial grade aluminum alloy with high mechanical strength for precise running and safety (excludes D2012 plus rotor)

- Every rotor can reach a maximum Speed of 15000rpm
- Rotors are seated on a tapered shaft, concentric and self-aligning, perfect to achieve running stability at high speeds
- D3024 & D1524R with three-layer sealed rotors/ anti-sample overflow prevents accidental leakage
- D3024 & D1524R rotors have passed MCA test according to IEC/EN61010-2-20, including mechanical safety and bio-safety tests
- Powerful cooling system minimizes rotor heating. D3024 rotors maintain at 10°C and D1524R rotors less than 8°C after running an hour

### Seals within the aluminum alloy rotor

Three rubber seals fitted to achieve bio-safe condition



## Rotor Features

### Fully autoclavable

High strength aluminum alloy rotors are fully autoclavable, withstanding steam sterilizing at 121°C for 20 minutes

### Three-layer seal

D3024 & D1524R rotors are designed to prevent sample leakage. Each and every rotor is hermetically sealed by three rubber seals.

### Mechanical safety

DLAB centrifuges confirm to MCA standard IEC/EN61010-2-20, causing disruption by partially cutting and overloading rotor assembly, and guarantees that no part shall be detached to cause danger to person or the environment.

Specifications	D3024
Max. Speed	15000rpm(200-15000rpm), increment:10rpm
Max. RCF	21380×g, increment:10×g
Speed Accuracy	±20 rpm
Rotor Capacity	1.5/2mL×24,0.2/0.5mL×36, PCR-8 strips×4,5mL×12,5mL×18
Run Time	30sec-99min/Continuous
Acceleration/Braking time [Sec]	25s ↑ 25s ↓
Motor	Brushless DC motor
Safety Devices	Dual door interlock, Over-speed detection, Automatic internal diagnosis
Power Requirements	Single-phase, AC200V-400V, 50Hz/60Hz, 5A, AC100V-120V, 50Hz/60Hz, 8A 200W
Noise Level	≤64dB
Dimension[W×D×H]	280×364×266mm
Weight	12kg
Other functions	Speed/RCF switch; Short-time run function; sound-alert function

## Available rotors

### AS24-2

Cat. No.19400069

#### for D3024 & D1524R

Max. speed: 15000rpm

Max. RCF: 21380×g

Rotor capacity:

2mL/1.5mL×24/0.2mL×24/0.5mL×24

Rotor material: Aluminum alloy

Biosealing: Yes

Available rotor adapters: A02P2,A05P2



### AS18-5 (round bottom)

Cat. No.19400073

#### for D3024 & D1524R

Max. speed :15000rpm

Max. RCF:21380×g

Rotor capacity:5mL×18 ( Round bottom )

Rotor material:Aluminum alloy

Biosealing:Yes



### AS12-5V (cone bottom)

Cat. No.19400070

#### for D3024 & D1524R

Max. speed: 15000rpm

Max. RCF: 21380×g

Rotor capacity: 5mL×12(Cone bottom)

Rotor material: Aluminum alloy

Biosealing: Yes



## Available adapters

### A02P2

Cat. No.19500001

0.2mL rotor adapter

Used with A12-2, A12-2P, AS24-2 and A24-2P rotors 24pcs/pk



### AS36-05

Cat. No.19400071

#### for D3024 & D1524R

Max. speed: 15000rpm

Max. RCF: 21380×g

Rotor capacity: 0.5mL×36,0.2mL×36

Rotor material: Aluminum alloy

Biosealing: Yes

Available rotor adapters: A02P05



### A05P2

Cat. No.19500002

0.5mL rotor adapter

Used with A12-2, A12-2P, AS24-2 and A24-2P rotors 24pcs/pk



### AS4-PCR8

Cat. No.19400072

#### for D3024 & D1524R

Max. speed: 15000rpm

Max. RCF: 21380×g

Rotor capacity:0.2mL/PCR8×4

Rotor material: Aluminum alloy

Biosealing: Yes



### A02P05

Cat. No.19500003

0.2mL rotor adapter

Used with AS36-05 rotor 36pcs/pk

