

# Reusable Heater Wire Adaptors

**900MR858**

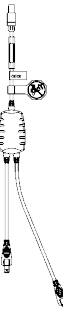


## Inspiratory Heater Wire Adaptor for reusable circuits Lemo™ style



For use with the MR850 humidifier when paired with an inspiratory heated, reusable circuit

**900MR556**



## Dual Heater Wire Adaptor for reusable circuits Lemo™ style

For use with the MR730 humidifier when paired with a dual heated, reusable circuit

**900MR558**



## Inspiratory Heater Wire Adaptor for reusable circuits Lemo™ style

For use with the MR730 humidifier when paired with an inspiratory heated, reusable circuit

**900MR033**

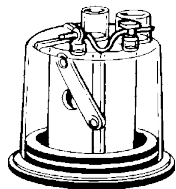


## Airway Thermometer

- For measuring gas temperature when used in conjunction with the MR410 humidifier
- Available in packs of 3

# Reusable Humidification Chambers

**MR370**



## Adult Humidification Chamber

Inlet Port: 22mm F  
Outlet Port: 22mm M

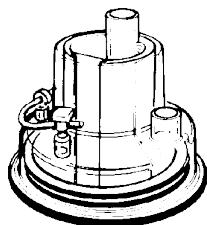
**900MR066**



## Absorbent Paper Refill Pack

- For use with MR370 humidification chamber
- Each pack contains 100 sheets

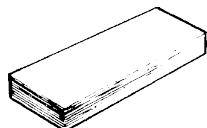
**MR340**



## Infant Humidification Chamber

Inlet Port: 15mm F  
Outlet Port: 22mm M

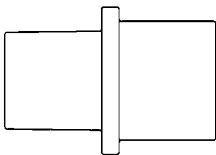
**900MR065**



## Absorbent Paper Refill Pack

- For use with MR340 Humidification chamber
- Each pack contains 100 sheets

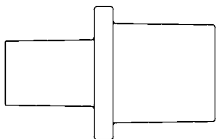
**900MR530**



**Adaptor**

- 22 mm F to 22mm M/ 15mm F
- Available in as single item, 50
- 900MR530L = 50

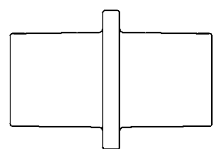
**900MR533**



**Adaptor**

- 15mm M/ 10mm F to 15mm M/ 10mm F
- Available as single item, 50, 100
- 900MR533L = 50
- 900MR533C = 100

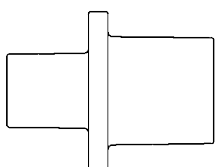
**900MR534**



**Adaptor**

- 22mm M / 15mm F to 22mm M / 15mm F
- Available as single item, 50, 100
- 900MR534L = 50
- 900MR534C = 100

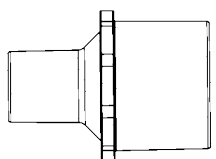
**900MR535**



**Adaptor**

- 22mm M/ 15mm F to 15mm M/ 10 mm F
- Available as single item

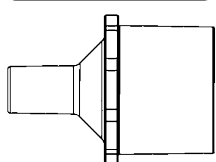
**900MR405**



**Adaptor**

- 22mm F to 15mm M
- Available as single item

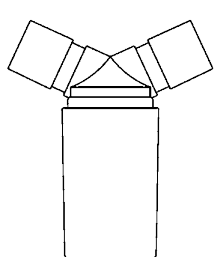
**900MR406**



**Adaptor**

- 22mm F to 10mm M
- Available as single item

**900MR139**

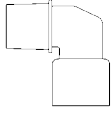


**Water Trap**

- 2 x 22mm M/ 15mm F ports
- Spring load valve maintains circuit seal when emptying the water trap
- Available as single item, 100
- 900MR139C = 100

# Reusable Components

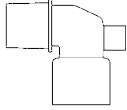
**900MR130**



## Elbow Adaptor

- 22mm F to 22mm M / 15mm F
- Available as single item, 50, 100
- 900MR130L = 50
- 900MR130C = 100

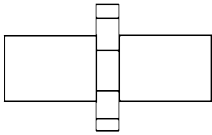
**900MR131**



## Elbow Adaptor with Temperature Port

- 22mm F to 22mm M / 15mm F
- Available as single item, 100
- 900MR131C = 100

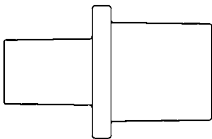
**900MR143**



## Adaptor

- 10mm M to 10mm M
- Available in packs of 10

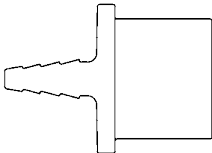
**900MR143**



## Adaptor

- 10mm M to 15mm M/ 10mm F
- Available as single item

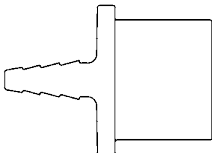
**900MR157**



## Adaptor

- 10mm M to 15mm M / 11mm F
- Designed for use with Dräger circuits
- Available as single item

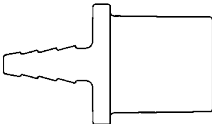
**900MR158**



## Adaptor

- 22 mm F
- Used to connect oxygen/air tubing to the humidification chamber
- Available as single item

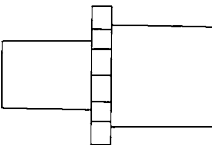
**900MR159**



## Adaptor

- 22 mm M/ 15mm F
- Used to connect oxygen/air tubing to the humidification chamber
- Available as single item

**900MR178**

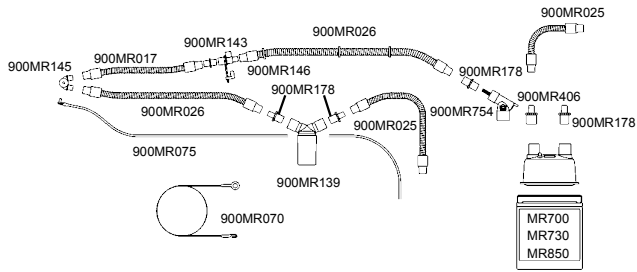


## Adaptor

- 12 mm M to 15mm M/ 10mm F
- Available as single item

# Reusable Infant Breathing Circuits

## 900MR780

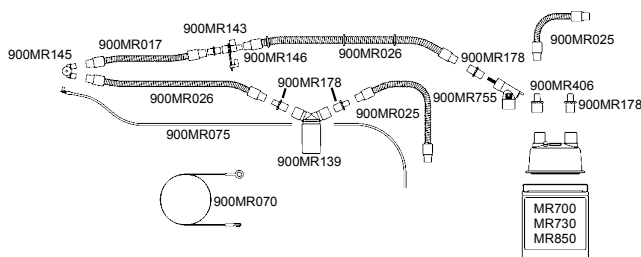


### Infant Single Heated Flow Breathing Circuit kit

#### Flows $\geq 4$ L/min

- 1.1 (44") inspiratory heated
- 0.3m (12") incubator extension
- 1.8m (71") non heated expiratory
- 0.7m (28") ventilator connection

## 900MR781

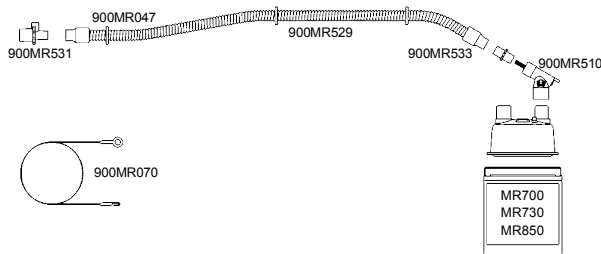


### Infant Single Heated Breathing Circuit kit

#### Flows $< 4$ L/min

- 1.1 (44") inspiratory heated
- 0.3m (12") incubator extension
- 1.8m (71") non heated expiratory
- 0.7m (28") ventilator connection

## 900MR743



### Infant Single Heated Breathing Circuit kit

#### Flows $\geq 5$ L/min

- 1.3m (52") heated inspiratory

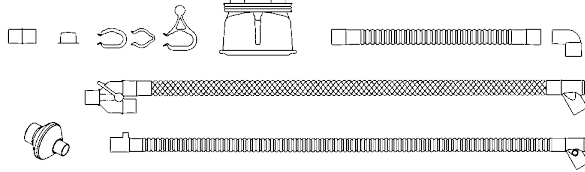
# Adult Invasive Ventilation Breathing Circuits & Chambers

## Dual Heated

*with chamber*

**RT340**

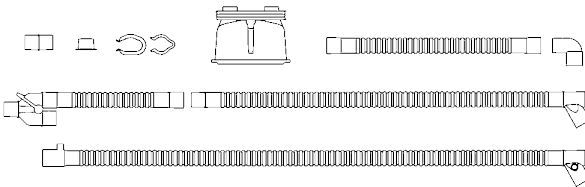
EVAQUA



### Adult Breathing Circuit Dual heated with EVAQUA® expiratory limb, autofeed chamber and filter

- 1.5 heated inspiratory limb
- 1.8m heated EVAQUA® expiratory limb
- 0.5m humidifier connection tube
- MR290 autofeed humidification chamber
- RT019 Inspiratory/Expiratory filter
- RT028 Circuit hanger
- Available in cartons of 10

**RT200**



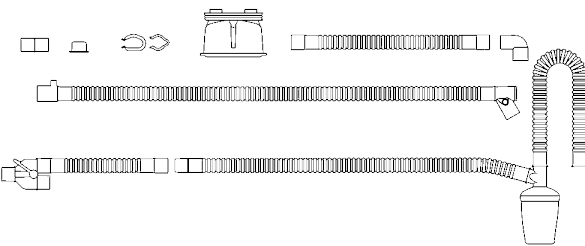
### Adult Breathing Circuit Dual heated with autofeed chamber

- 1.5m heated inspiratory limb
- 1.5m heated expiratory limb
- 0.5m humidifier connection tube
- MR290 autofeed humidification chamber
- Available in cartons of 10

## Inspiratory Heated

*with chamber*

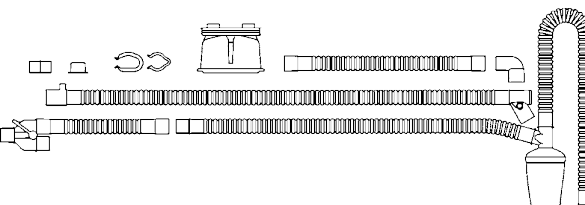
**RT205**



### Adult Breathing Circuit Inspiratory heated with autofeed chamber

- 1.5m heated inspiratory limb
- 1.76m unheated expiratory limb with water trap
- 0.5m humidifier connection tube
- MR290 autofeed humidification chamber
- Available in cartons of 10

**RT212**



### Adult Breathing Circuit Inspiratory heated with autofeed chamber

- 1.5m heated inspiratory limb
- 2.0m unheated expiratory limb with water trap
- 0.5m humidifier connection tube
- MR290 autofeed humidification chamber
- Available in cartons of 10

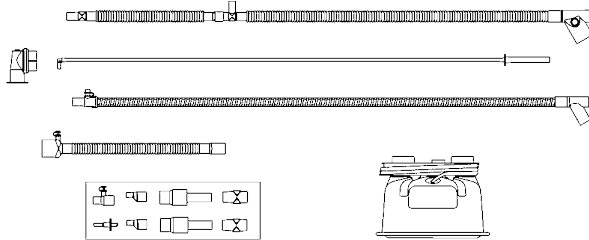
# Infant Invasive Breathing Circuits & Chamber Kits

**Flows < 4 L/min**

*with chamber*

**RT236**

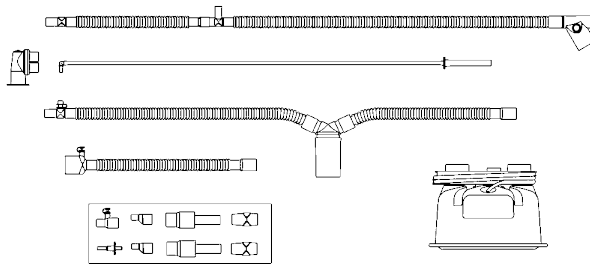
EVAQUA



## Infant Breathing Circuit Kit Dual heated with EVAQUA® expiratory limb

- 1.1m heated inspiratory limb
- 0.3m incubator extension
- EVAQUA® heated expiratory limb
- 0.6m humidifier connection tube with nitric oxide port
- Pressure line
- Adaptor kit
- MR290 autofeed humidification chamber
- Available in cartons of 10

**RT226**



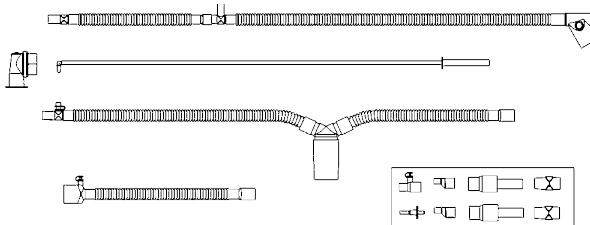
## Infant Low Flow Breathing Circuit Kit

- 1.1m heated inspiratory line
- 0.3m incubator extension
- Unheated expiratory limb with water trap
- 0.6m humidifier connection tube with nitric oxide port
- Pressure line
- Adaptor kit
- MR290 autofeed humidification chamber
- Available in cartons of 10

**Flows < 4 L/min**

*without chamber*

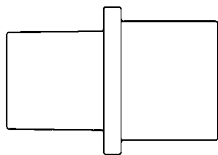
**RT126**



## Infant Low Flow Breathing Circuit

- 1.1m heated inspiratory line
- 0.3m incubator extension
- Unheated expiratory limb with water trap
- 0.6m humidifier connection tube with nitric oxide port
- Pressure line
- Adaptor kit
- Available in cartons of 10

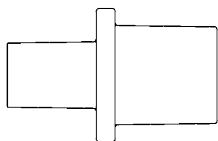
**900MR530**



**Adaptor**

- 22 mm F to 22mm M/ 15mm F
- Available in as single item, 50
- 900MR530L = 50

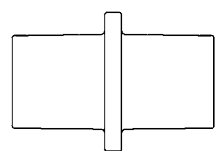
**900MR533**



**Adaptor**

- 15mm M/ 10mm F to 15mm M/ 10mm F
- Available as single item, 50, 100
- 900MR533L = 50
- 900MR533C = 100

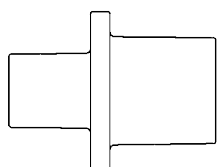
**900MR534**



**Adaptor**

- 22mm M / 15mm F to 22mm M / 15mm F
- Available as single item, 50, 100
- 900MR534L = 50
- 900MR534C = 100

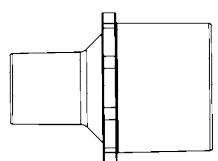
**900MR535**



**Adaptor**

- 22mm M/ 15mm F to 15mm M/ 10 mm F
- Available as single item

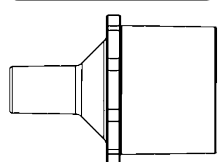
**900MR405**



**Adaptor**

- 22mm F to 15mm M
- Available as single item

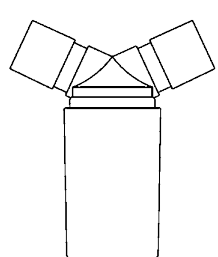
**900MR406**



**Adaptor**

- 22mm F to 10mm M
- Available as single item

**900MR139**



**Water Trap**

- 2 x 22mm M/ 15mm F ports
- Spring load valve maintains circuit seal when emptying the water trap
- Available as single item, 100
- 900MR139C = 100

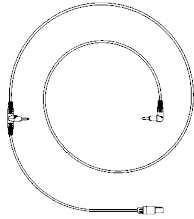


# Airway Temperature Probes

## 900MR860-869



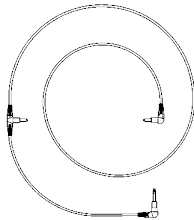
### Temperature/Flow Probes for MR850 Humidifier Right Angle Airway Probe



- 900MR863 for use with circuits 0.7m (28") in length
- 900MR868 for use with circuits 1.1m (44") in length
- 900MR860 for use with circuits 1.3m (52") in length
- 900MR869 for use with circuits 1.5m (60") in length
- 900MR861 for use with circuits 1.8m (72") in length

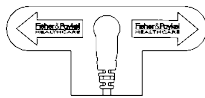
## 900MR560-571

### Temperature Probes for MR700 & HC500 Series Humidifiers Right Angle Airway Probe



- 900MR563 for use with circuits 0.7m (28") in length
- 900MR568 for use with circuits 1.1m (44") in length
- 900MR560 for use with circuits 1.3m (52") in length
- 900MR569 for use with circuits 1.5m (60") in length
- 900MR561 for use with circuits 1.8m (72") in length
- 900MR571 for use with circuits 2.5m (92") in length

## 900MR208



### Reflective Shield for Temperature Probe

- Protects airway temperature probe from radiant heat to improve humidifier performance with infant radiant warmers
- Available in packs of 20

## 900MR033



### Airway Thermometer

- For measuring gas temperature when used in conjunction with the MR410 humidifier
- Available in packs of 3