

# X-CUBE 70/90 X+MicroView

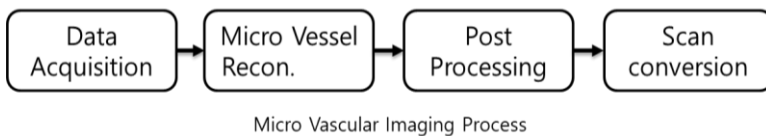
## X+MicroView

### Focus on Microvessel

MicroView is the vascular imaging mode which displays Micro blood flow. With this technology, low-speed blood flow areas which users previously couldn't see on Color Doppler are shown at the fast frame rate.

### MicroView image technology

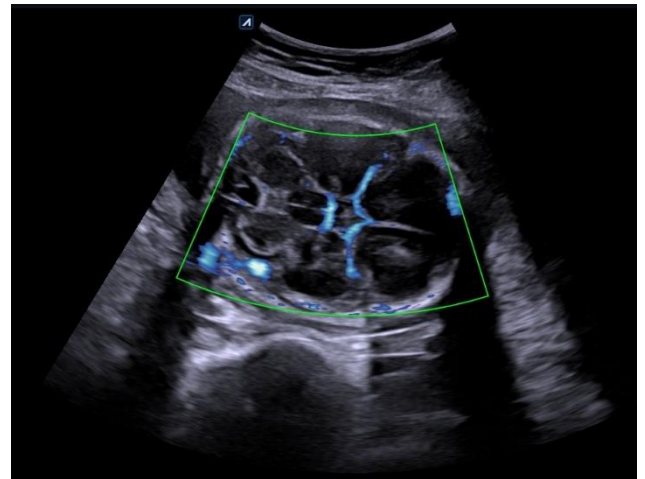
The spatio Temporal Filtering technology use the features in which blood flow and tissue are gathered, and separates them in the space-time domain Color Doppler is difficult to detect low velocity flow because it is similar frequency to surrounding tissues



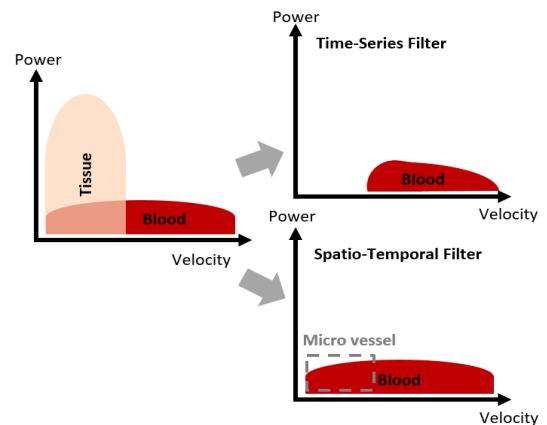
### Advantages

The X+ MicroView can visualize the slow flow of microvessels in organs. For that reason, it provides higher diagnostic accuracy compared to color doppler and power doppler. It also provides better sensitivity, better resolution, and higher frame rates.

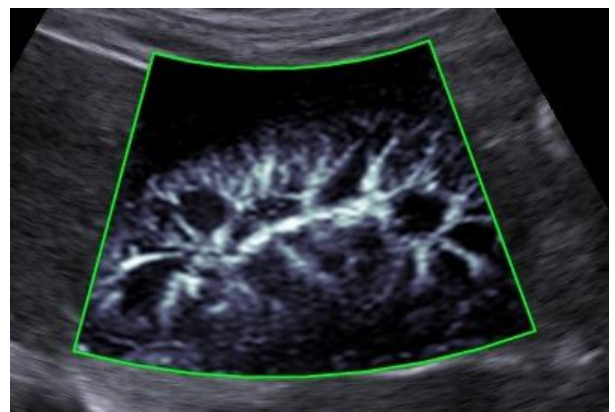
- Micro vessels can be observed with images with good contrast without using a contrast agent
- It is useful for tumor detection because the movement of blood flow around the tumor is seen
- Fast frame rate same as color doppler
- Less flash artifacts due to breathing and probe movement



**Figure1** Coronal view of the fetal head, obtained with at normal fetal case, showing the middle cerebral artery

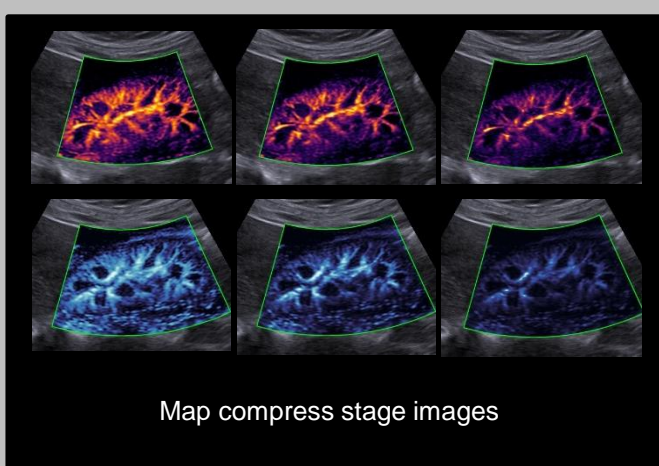
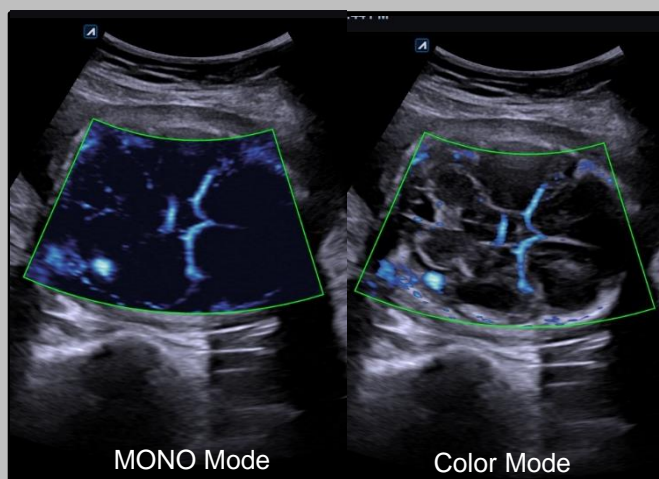


**Figure2** Spatio Temporal Filtering technology



**Figure3** Sagittal view of the kidney obtained with MVI

## Easy Steps for X+MicroView



### To perform an examination using MVI mode

- 1** Press the **Color doppler** button
- 2** Select **X+ MicroView** on the touch screen. Micro Vascular Imaging (MVI) is activated.
- 3** To deactivate Micro Vascular Imaging (MVI), select **X+ MicroView** on the touch screen.

### Display Mode (Mono / Color)

The display mode is supported in the Mono and Color modes. In Mono mode, only the Color image for the blood flow is represented.

In Color mode, the Color image for blood flow is superimposed on the 2D image.

#### • Switching the display modes

To switch the mode, select < or > of Disp Mode on the touch screen.

### Suppress

It reduces tissue information and increases vascular information. Suppress has the advantage of improving visibility by suppressing tissues and increasing blood flow.

#### NOTE

Suppress values are -6 to 6.

### Map compress

User can select a range of the color map to display color details.

#### NOTE

Map compress values are -6 to 6.

### Available transducers and applications

Transducer type	Transducer
Convex	SC1-7H, SC2-9H
Volume Convex	SVC1-8H
Linear	L3-12X, L10-25H, SL3-19H, SL3-19X, L3-8H
Endocavity	EC2-11H, EV2-11H