

# 2wheel waste containers





## Robust design

The robust design of all four corners of the bin provides high pressure and impact resistance during garbage collection.

## Reinforced sides

Solid and reinforced sides for extra durability, heavy use and improved design.



## Alternative axle position

Integrated dual holes allow the assembly of axles at different heights depending on the wheel size.

## Clever axle placing

During transport, the axles are fixed to a specific position next to the handle. This allows convenient stacking and a quick visual inventory control.



## Insulating edges

The especially designed edges prevent the entrance of rain water or other liquid into the bin.



## State-of-the-art technology

Responding to the growing demand of the waste management industry, HELESI designed the new 2wheel series MGB-PRO produced with the use of moulds of the latest technology in the sector of injection moulding. The production process is fully automated and based on the use of specialised software and industrial robot systems. The series MGB-PRO supports every single requirement on waste management.



## 2wheel plastic waste bins

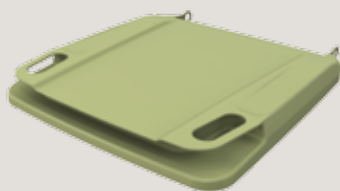
HELESI offers the most efficient and cost effective solutions which suit any specific user's requirement for wheel-driven bins.

Waste bins are available with a multitude of accessories which supply any special need of municipalities and waste management companies.

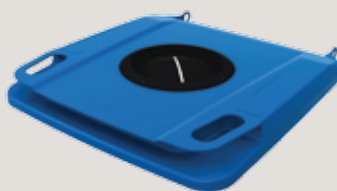
- Lids with special openings for the collection of aluminium, glass, paper and other recyclable materials
- Specific types of lock systems
- A variety of bins for organic or household waste
- Identification systems
- Colour variety

### Lids-Recycling covers

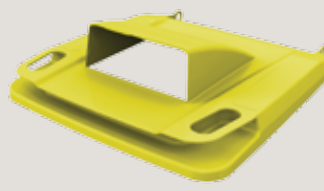
A variety of resistant lids, with reinforced sides, special openings for the collection of any recyclable material such as aluminium, glass, paper, plastic or other are available. In particular, the cover Lid-in-Lid option is ideal for using the bin from the edge of the pavement.



Standard lid without cover



Glass/plastic recycling cover



Paper recycling cover



Lid-in-Lid



### Wheels and axles

All 2wheel waste bin models are fitted with galvanised anticorrosion axles and equipped optionally with plastic fittings on the wheels for additional noise reduction and anticorrosion protection. All bins can be equipped with rubber wheels 200mm-300mm depending on the model.



### Smooth surfaces

The smooth, rounded surfaces of the bin ensure simple and hygienic cleaning, preventing odours deriving from residuals.



### Drain plug

The liquid drainage outlet, integrated into the lowest possible position of the bin, in combination with the rounded and smooth surfaces provide easy and hygienic cleaning even without using a trash bag.





Depending on customer needs, the containers can be equipped with additional accessories and options.



## Noise reduction

There is an optional solution for noise reduction through the placing of special tyres on the edge of the lid.

## RFID chip nest

Identification and registration of bin data is possible through specific identification chips. Each bin can be equipped with a cross-board chip nest compatible with any identification system. It is discreetly placed under the comb bar which allows the chip to be under long-term protection, remaining almost invisible.



## Individualization and labelling

With the use of diverse variations such as customized names, logos, instructions, serial numbers and graphics on the body or the lid, waste bins are adjusted to customer's specific needs.

## Lock systems

There are two different lock systems in order to avoid unauthorized access to the bin: the triangular lock which is secured by a special key and the gravity lock which opens automatically and then relocks on completion of the operation.



## Foot pedal

The foot pedal is an additional accessory that allows easy opening of the lid with the foot and with no use of hands.



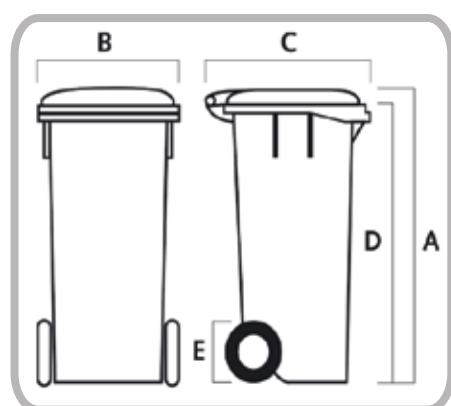
## Pre-composting Bio-Bin

This version is especially designed for the collection of organic waste: special ventilation openings on the side walls, a perforated wall under the lid handle, as well as a grid existing on the base of the bin for the draining of liquids and the easy removal of organic waste during the evacuation procedure. These characteristics facilitate ventilation and contribute to the preparation of organic waste for subsequent composting. In particular, Bio-Bin succeeds in accelerating drainage in a way that the total waste volume is significantly reduced during collection.





MGB	60lt		80lt		120lt	140lt	180lt	240lt	360lt
	Low	High	Low	High					
Maximum Height (mm) A	660	940	865	940	940	1060	1060	1060	1080
Width (mm) B	440	440	440	440	480	480	550	577	580
Depth (mm) C	500	500	500	500	540	545	610	720	875
Upper Edges (mm) D	595	875	800	875	870	1010	1000	990	1000
Wheel Diameter (mm) E	200	200	200	200	200	200/250	200/250	200/250	200/300



#### Standard Colours



#### Special Colours



The above data should be used as a guide only, alternations may occur without prior notice.



Greek product



## IML- labelling

In-Mould Labelling technology (IML) refers to an innovative and fully automated method during which the label gets applied to the surface of the product during the production process inside the injection moulding machine. This type of label does not deteriorate, is protected from UV radiation and remains clearly visible and colourful. The accuracy of printing and colour quality is excellent compared to any traditional method of printing or stickers.



# Treat the Environment Professionally

[www.helesi.com](http://www.helesi.com)

## Hellenic Environmental Systems Industry S.A

As a global leader in the sector of polyethylene and polypropylene plastic product industry, manufacturing plastic injection-moulded products, Helesi owns one of the most modernized and well equipped units in Europe, located in the Industrial Area of Komotini. It is prominent among the nine companies worldwide which produce a full range of plastic waste bins and containers according to the EN-840 Standards and is noted for its significant activity within the waste management sector.

The company, aware of the recent requirements in transport and product storage, invested in moulds of the latest technology aiming at the production of multiple alternatives on transport and storage, with long life expectancy and in accordance with EU Directives & Regulations.



Industrial Park of Markopoulo, Location Ntorovateza, 19003, Attiki, Greece  
[www.helesi.com](http://www.helesi.com), email: [central@helesi.com](mailto:central@helesi.com)