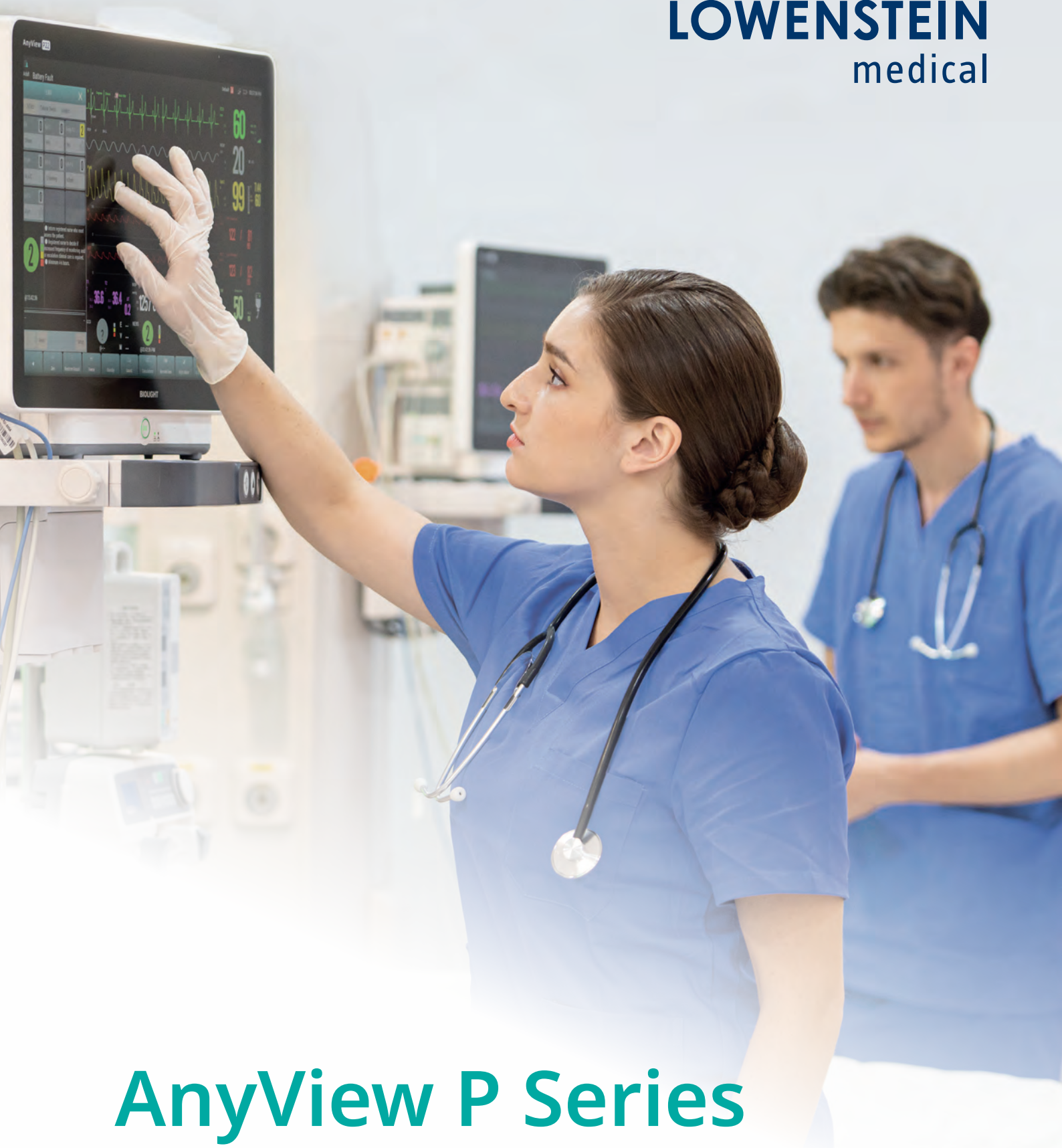


**LÖWENSTEIN**  
medical



# AnyView P Series

Patient Monitor

 With people in mind

# P Series

P22 / P18 / P15 / P12

Powerful. Practical. Pioneer.



reddot design award  
winner 2021

Winner of the world's leading design award

P Series won the Red Dot Design Award: Product Design 2021. This international award confirms global recognition of the superiority of the P Series design and calls attention to the Biolight vision of continuous development of medical devices for the benefit of human health.





**P12**



**P15**



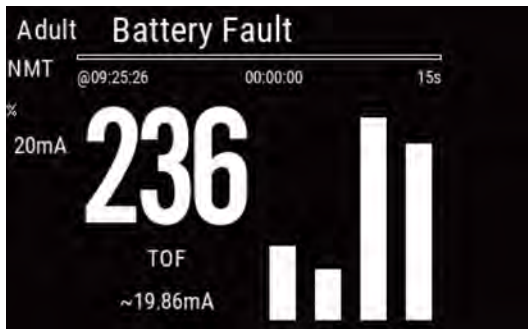
**P18**



**P22**

Screen (inch)	12.1	15.6	18.5	22
Resolution	1280*800	1920*1080	1920*1080	1920*1080
Modular slot	4	6	6	6
Weight	< 5 kg	< 6 kg	< 7 kg	< 8 kg

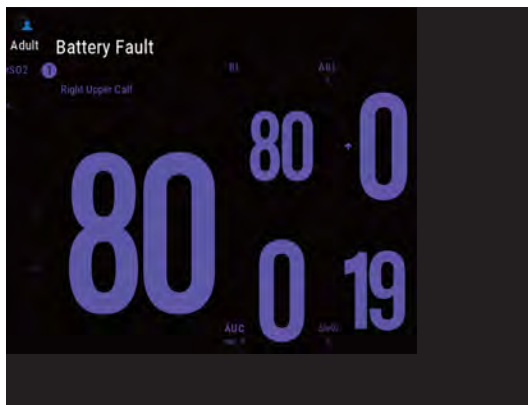




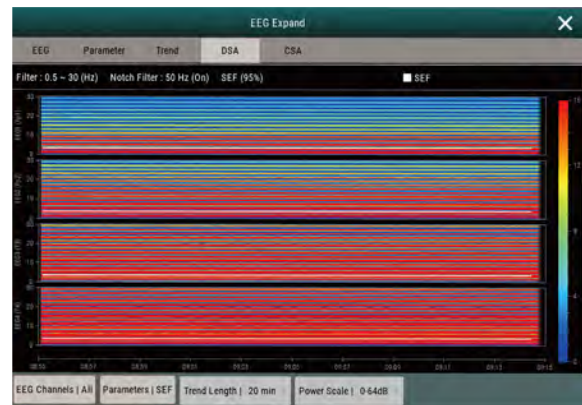
**NMT (Neuromuscular transmission)**  
NMT helps in determining the depth of neuromuscular blockade.



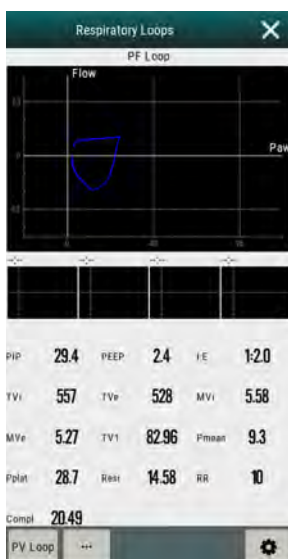
**BIS (bispectral index)**  
Used to determine the depth of sedation or hypnosis.



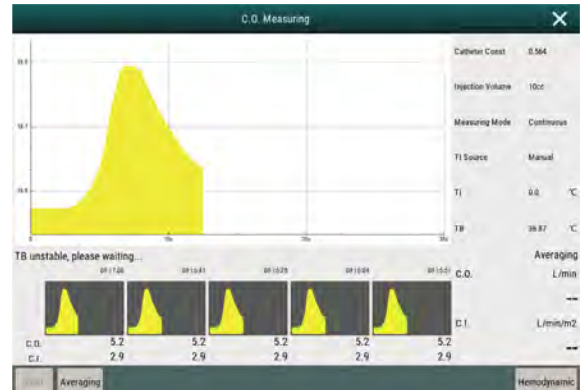
**rSO<sub>2</sub> (regional oxygen saturation)**  
A non-invasive method of directly measuring cerebral perfusion



**EEG (electroencephalography)**  
Used to determine changes in brain activity. Findings assist in diagnosing brain disorder.

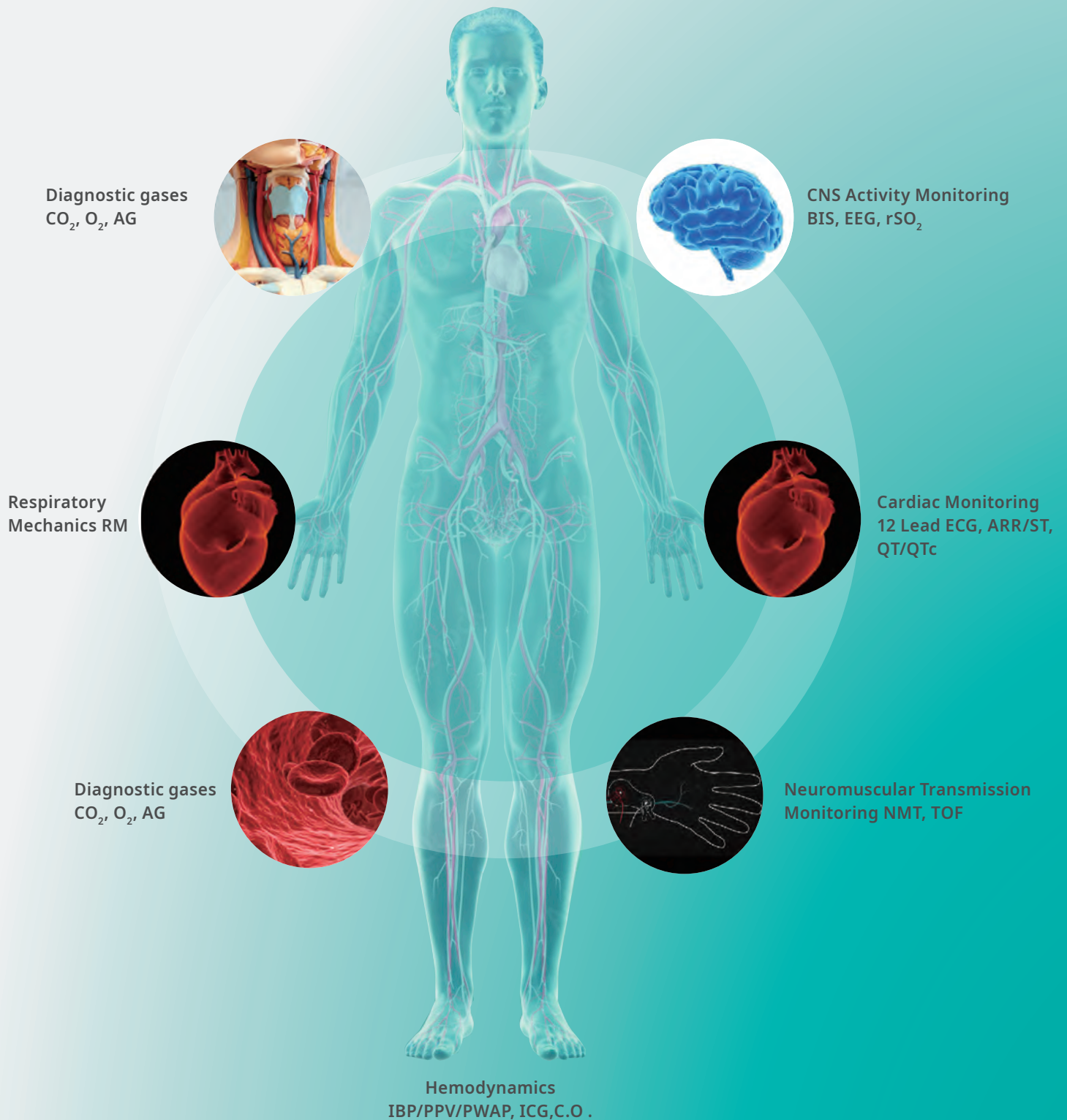


**RM (respiratory mechanics)**  
Help understand the ventilator / anesthesia machine operation and patient's respiratory function



**C.O. (cardio output)**  
A gold standard for monitoring the critically ill patient to ensure tissue oxygenation.

## Monitoring parameters of all vital organs



# P1. Patient-First.

Mobile Care. Continuous Care.



reddot design award  
winner 2021



## Multiple use and flexibility

(stand-alone use or and as part of Host Monitor P12 – P22)

### Monitoring also for intra-hospital transfer

Just slide the P1 transport monitor into the patient monitor, the P Series can implement the seamless transfer from operating room, ICU, to the recovery room.

Recovery  
Room



## P1

Screen (inch)	5.5 inch touch screen
Weight	< 0.9 kg
Battery	8 hours continuous operation
Resolution	1280*720
Built in module	CO <sub>2</sub>
Expanded module	Masimo, Nellcor SpO <sub>2</sub> Suntech NIBP Sidestream/Mainstream CO <sub>2</sub>





ICU

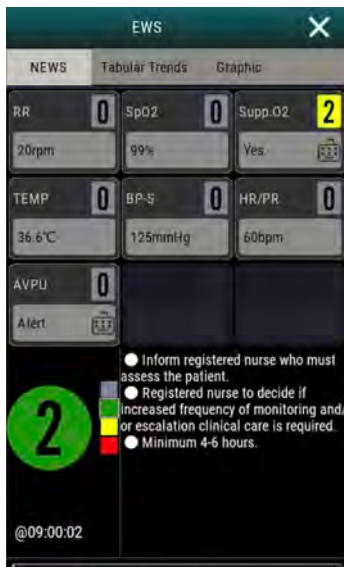
Operating Room



P1 with  
Transfer Holder



P1 with  
Transfer Holder and  
additional Module Slot



**EWS (Early Warning Score)**  
Helps identify early signs of deterioration and quickly determine the degree of illness.



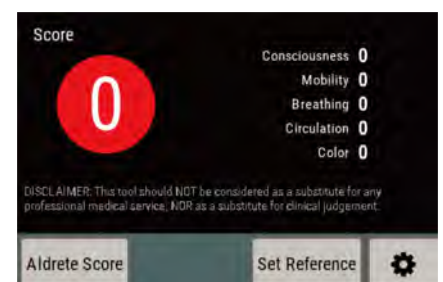
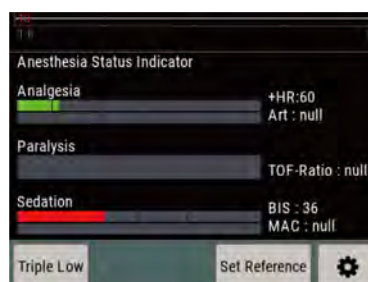
**GCS (Glasgow Coma Scale)**  
Provides a practical method for assessment of conscious level in response to defined stimuli.



**Sepsis View**  
Helps to score and guide the treatment of sepsis based on the latest SSC guidelines.

## BOA (Balance of Anesthesia)

Focus on relevant parameters over the course of the surgery.

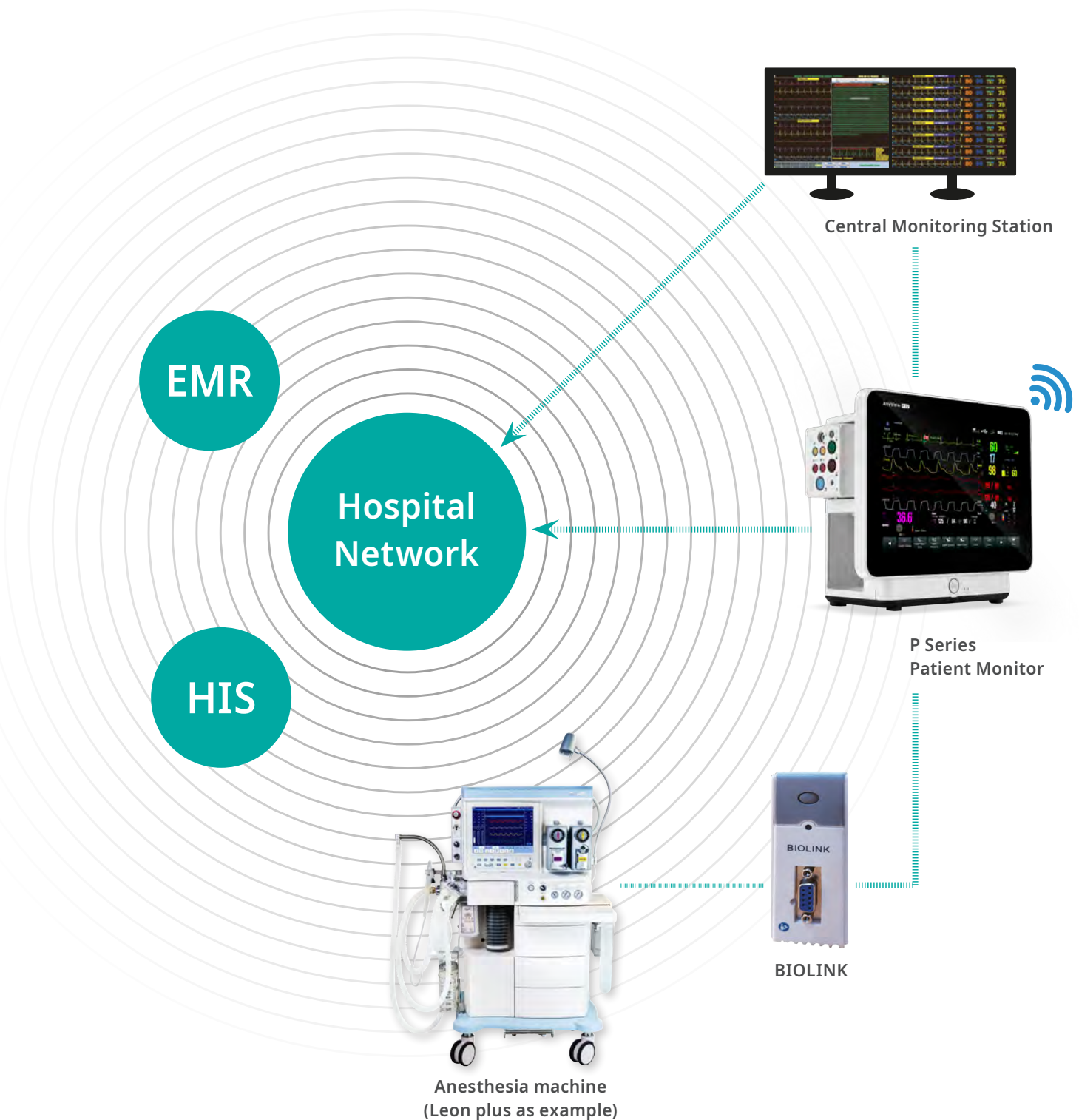




## Advanced Seamless Network Connection

**Anyview P Series** integrates the hospital network to achieve efficient management of patient data through high-end connection technology.

It connects to other bedside medical devices such as anesthesia machine through Biolink module. Via central monitoring station, the patient data and other bedside devices data are shared seamlessly with the hospital network, and support the clinician the diagnosis.



# Unique Drip Monitoring

Make intravenous infusion safer.

The unique patient monitor with **drip monitoring** function, which can monitor the drip rate and clamp the tube to stop infusion. It helps the healthcare workers to set the drip rate and gives a safer infusion to the patient.





## Accessories P Series

**Module Rack**  
Extension of module capacity



**Transfer Holder**  
For intra-hospital transfer



**Docking Station**  
For use as stand-alone monitoring





# LÖWENSTEIN

medical

## Sales + Service

Löwenstein Medical  
Arzbacher Straße 80  
56130 Bad Ems, Germany  
T. +49 2603 9600-0  
F. +49 2603 9600-50  
[info@loewensteinmedical.com](mailto:info@loewensteinmedical.com)  
[loewensteinmedical.com](http://loewensteinmedical.com)



Guangdong Biolight Meditech Co., Ltd.  
NO.2 Innovation First Road,  
Technical Innovation Coast,  
Hi-tech Zone, Zhuhai, P.R. China.  
Postcode: 519085  
T. +86-756-3399935  
F. +86-756-3399911  
[overseas@blt.com.cn](mailto:overseas@blt.com.cn)  
[blt.com.cn](http://blt.com.cn)



p10387en2202

© Copyright protected.  
Copying or reproduction of any sort requires the explicit approval of Löwenstein Medical.