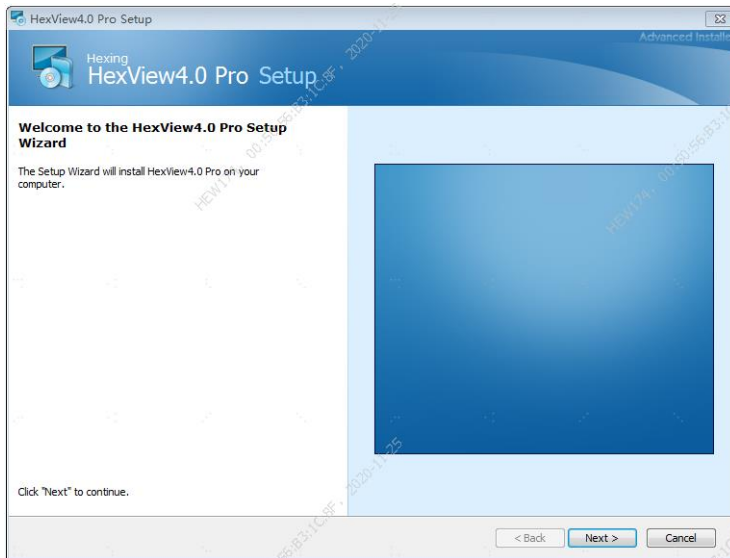


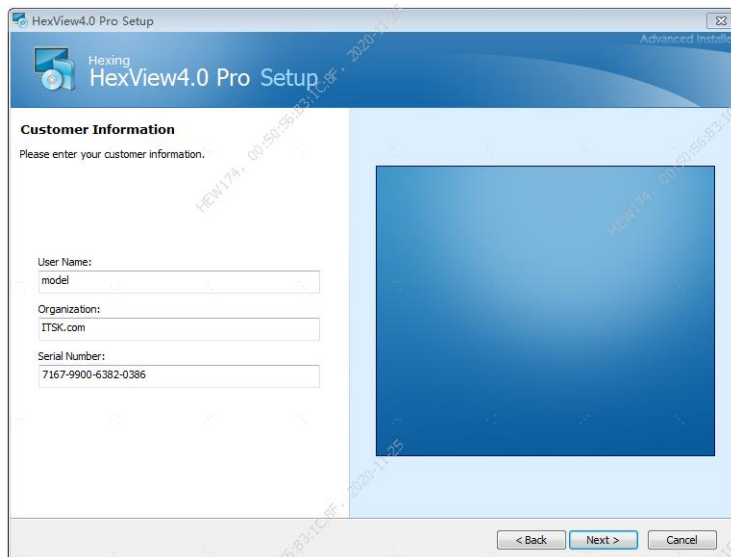
User Introduction Guide

一、 Install

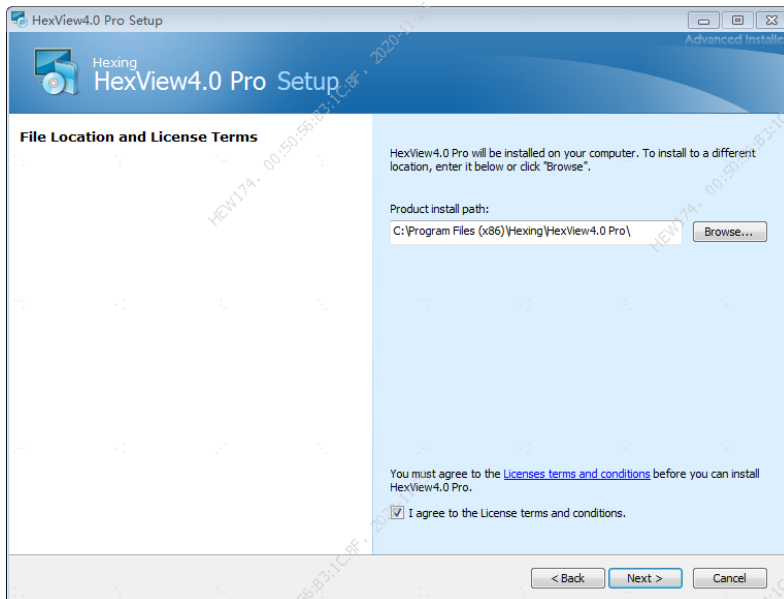
- 1、 Double click “HexView_V4.0Pro.exe”
- 2、 Click “Next”



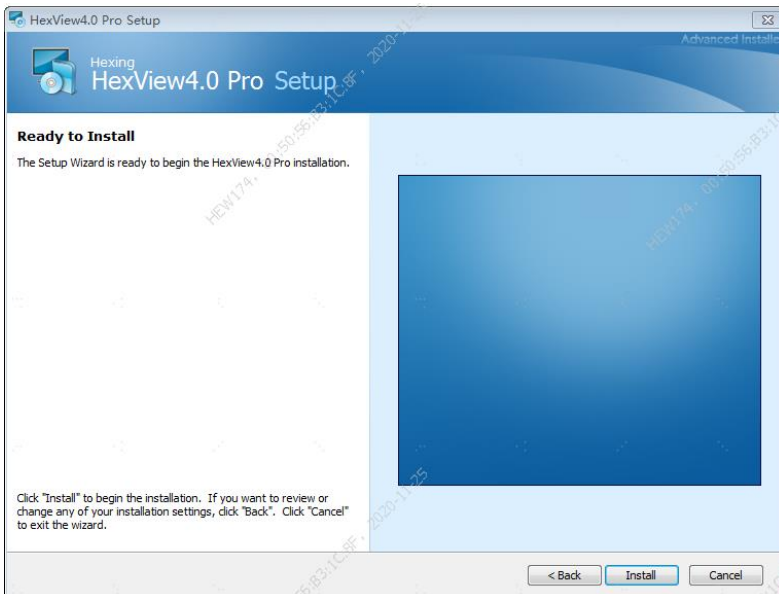
- 3、 serial number: 7167-9900-6382-0386, User name and organization can be defaulted



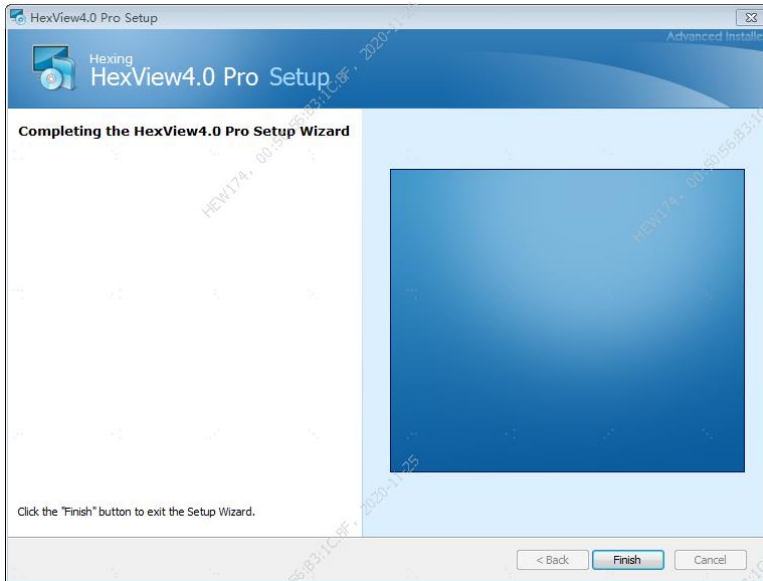
- 4、 select “ I agree”, Click “Next”



5、 Click “Install”



6、 Click “Finish”

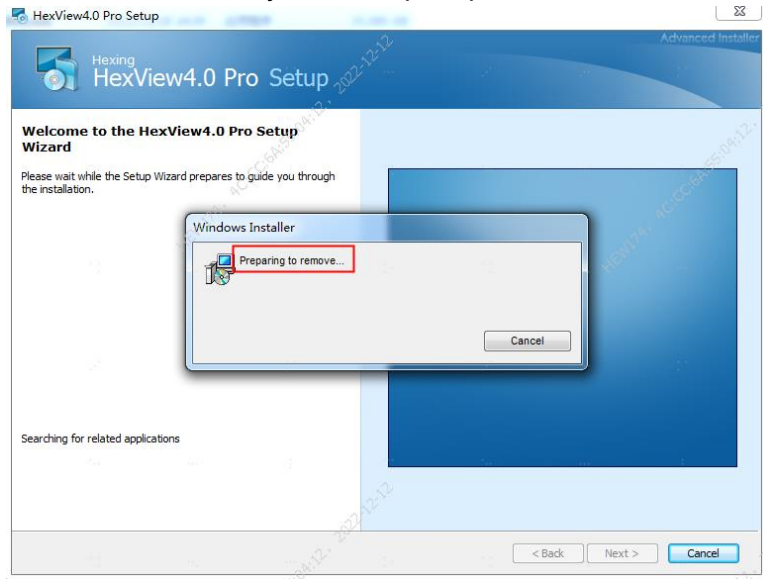


7、 installation is complete

❖ The following situations may occur during installation:

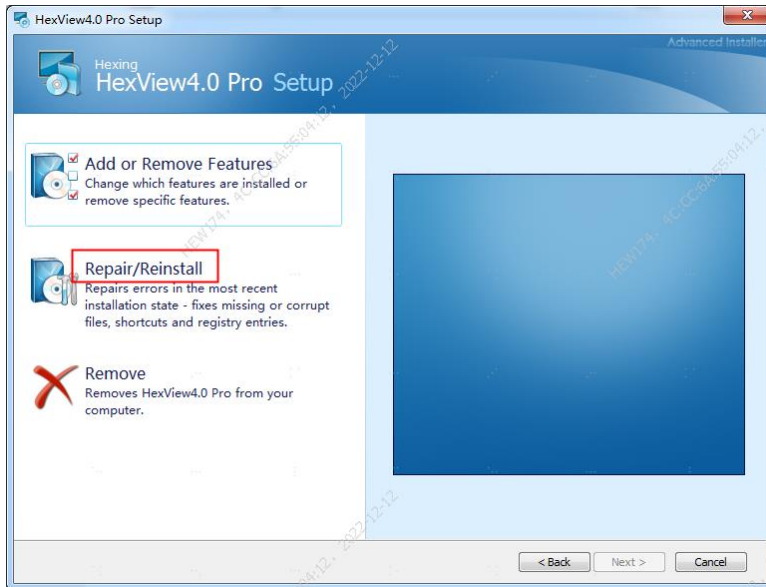
1、 The installation package is inconsistent with the existing version:

1) Click Install and you will be prompted to delete the existing version first

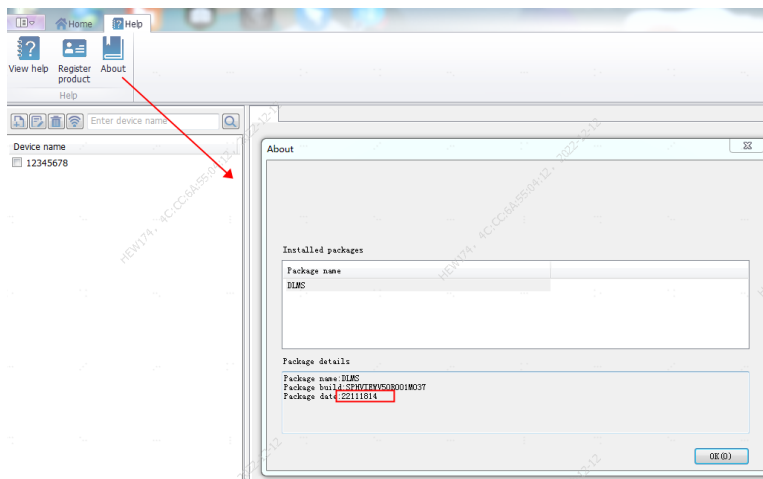


2) Continue to follow the normal steps to complete the installation of the new version .

2、 The installation version is consistent with the existing version
Select reinstall to reinstall:

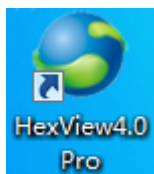


4.0pro How to view versions? At the following locations

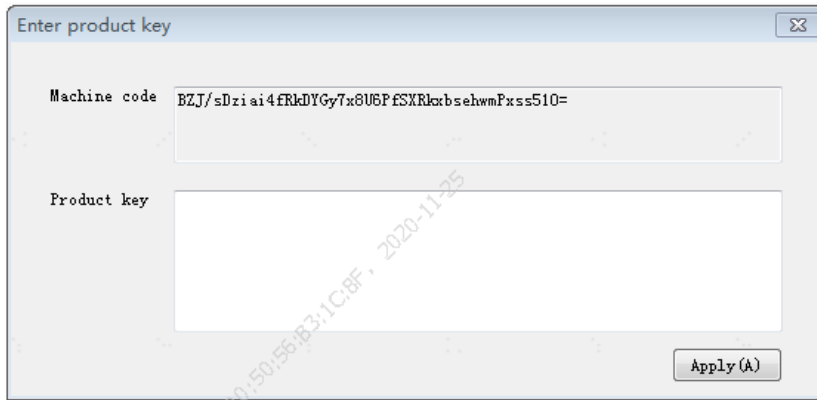


二、 Register

- 1、 Find the shortcut icon for 4.0pro on the desktop



- 2、 Double click icon to open 4.0pro
- 3、 The following interface appears, requiring registration



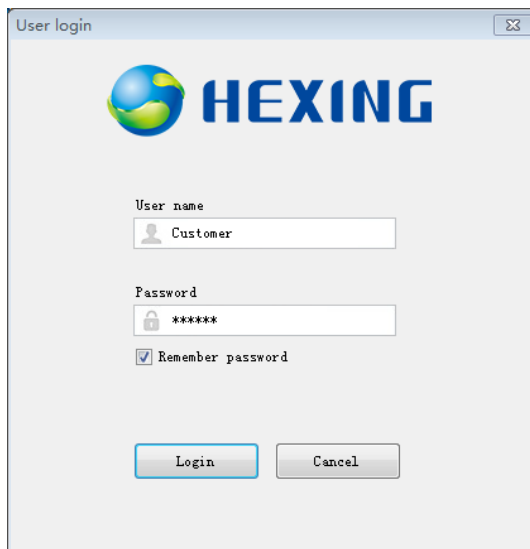
4、 machine code “**BZJ/sDzai4f.....xss510=**” Send it to the relevant person in charge and generate a registration code, such as:

5BC5329E1A7A5D22EE72AF2CB6C3094C75501BDC4.....27F876E741A2A0F69A69FE

Copy to the Product key text box, click "Apply" to complete the registration。

三、 Login

1、 Enter username and password: default Customer: 123456



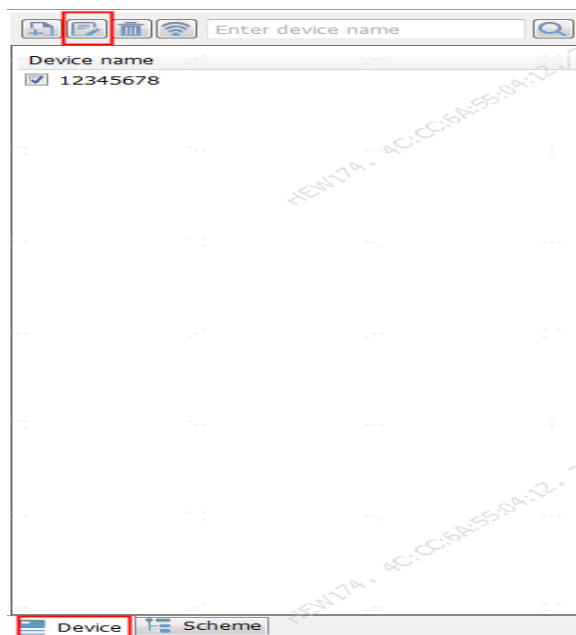
DLMS stand-alone



Merge version, select the corresponding protocol type based on the device: DLMS、IEC21-62056、HX645.....

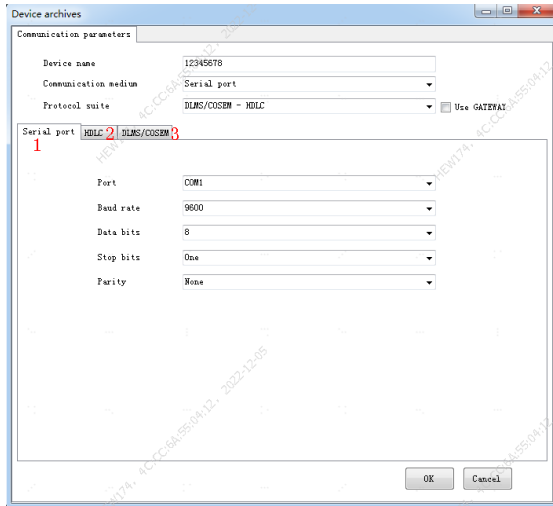
四、Connect

1、Select device

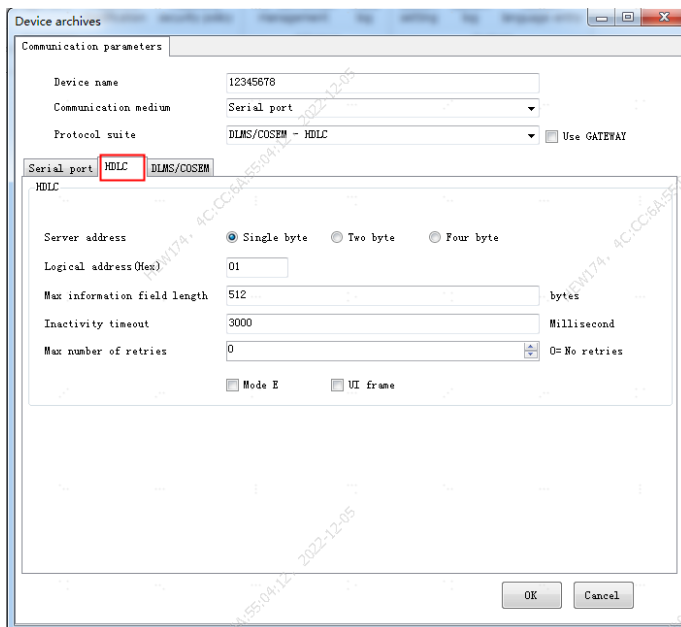


2、Edit communication parameters

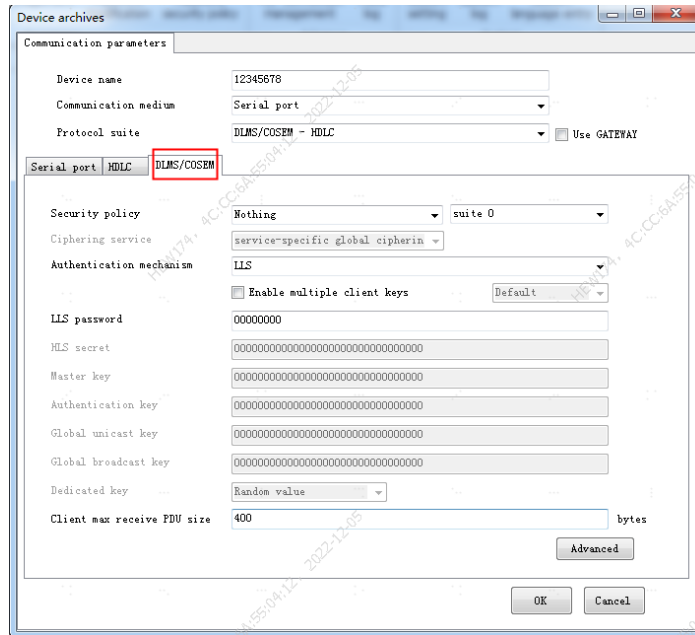
- 1) Serial port related parameters: Serial port, baud rate, etc



- 2) HDLC link layer related parameters: Communication delay, E-mode mode, logical address, etc

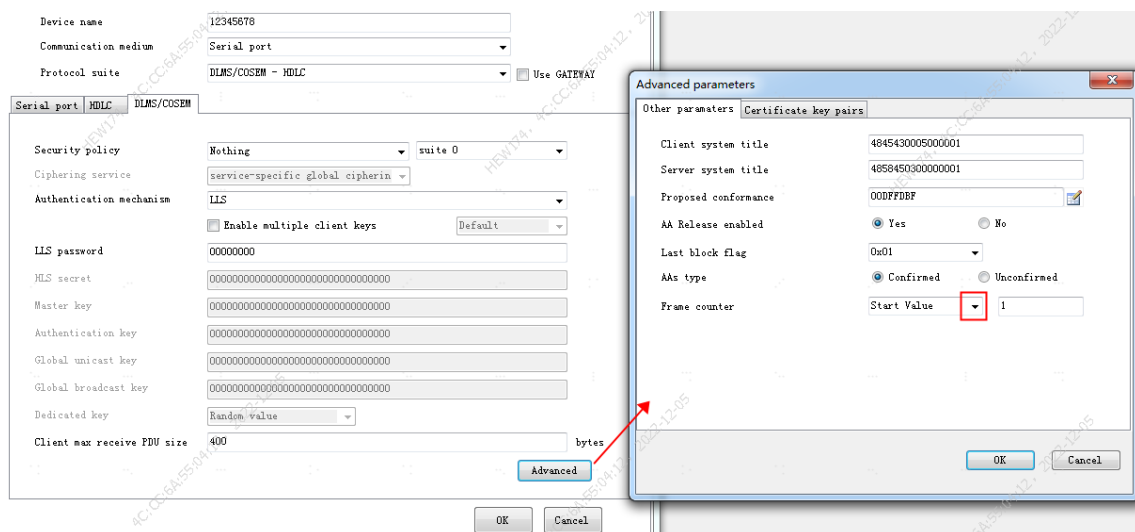


- 3) DLMS/COSEM Application layer related parameters: Identity authentication, secret keys, etc



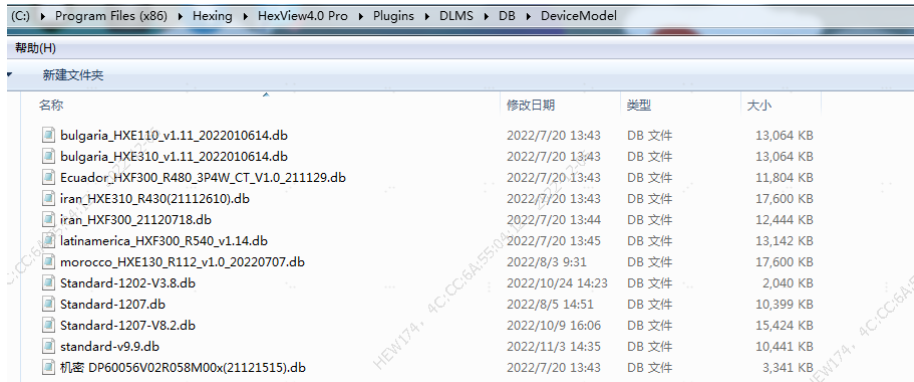
4)

Advanced parameters such as Frame Counter can be configured according to device needs:

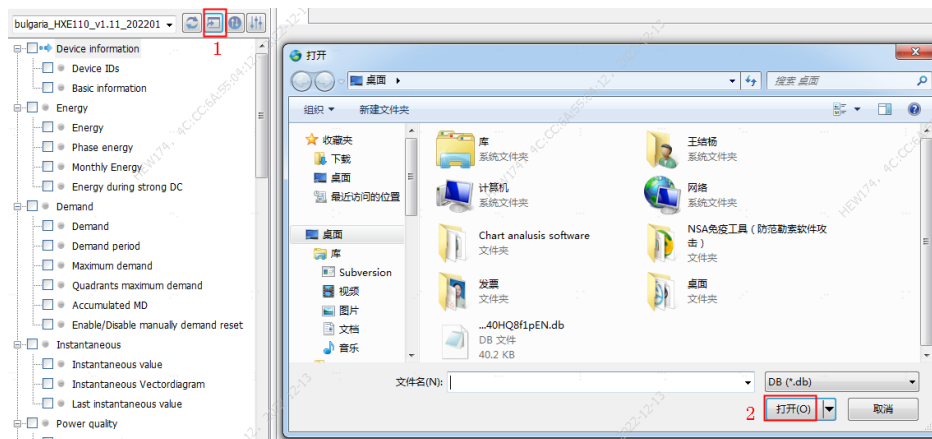


3、 Select DB

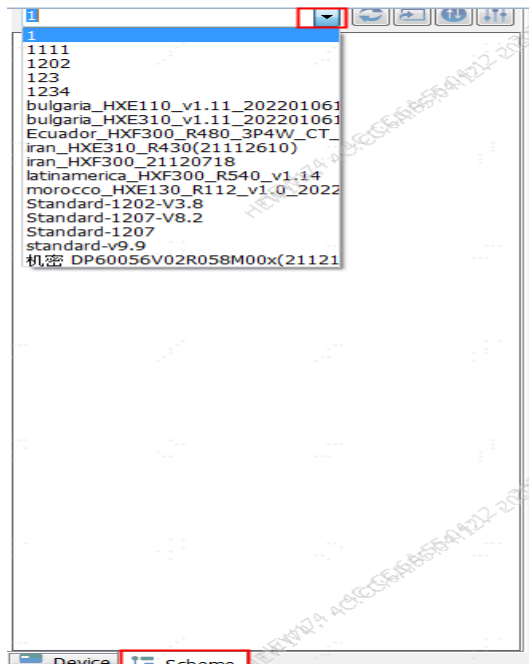
- ◆ Storage location: Different protocol DBs are stored in corresponding files:
 - DLMS: ..\Hexing\HexView4.0 Pro\Plugins\DLMS\DB
 - IEC21: ..\Hexing\HexView4.0 Pro\Plugins\IEC62056_21\DB
 - UTC: ..\Hexing\HexView4.0 Pro\Plugins\UTC\DB
- ◆ Copy the DB to the DeviceModel folder



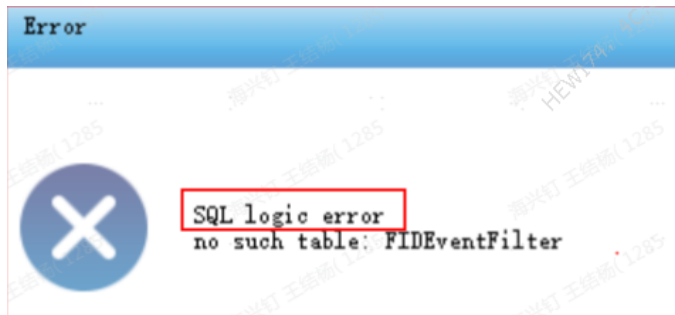
◆ Or import DB through 4.0pro



4、Open 4.0pro and select the required DB from the dropdown box for meter reading

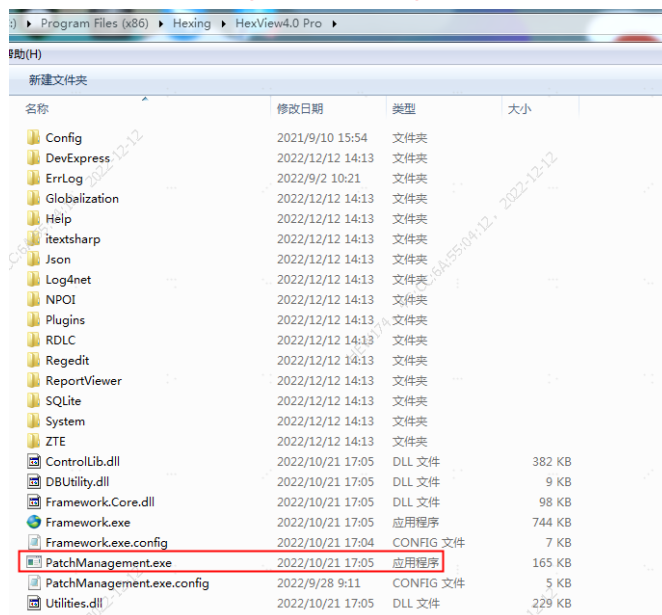


✧ When DB needs to be upgraded, the following SQL logic error prompt will appear:

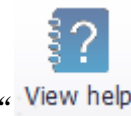


Treatment:

1、 Find the following PatchManagement.exe script program in the installation directory



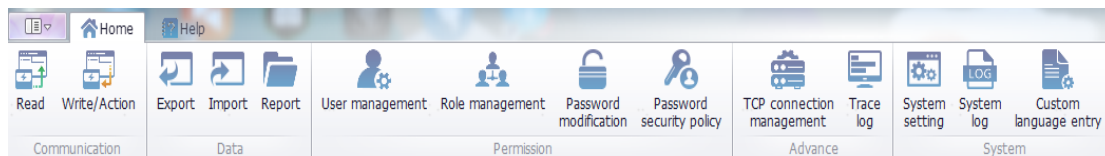
2、 Right click to run this script program as an administrator, and after the DB upgrade is completed, reopen 4.0pro meter reading







- ◆ Details of specific communication steps can be viewed About “View help” relevant chapter:

8	Communication with DLMS	40 ^w
8.1	Device management	40 ^w
8.1.1	General	40 ^w
8.1.2	Communication medium	41 ^w
8.1.3	Protocol suite	42 ^w
8.1.4	Security mechanism	45 ^w
8.2	Local communication	51 ^w
8.2.1	Connection	51 ^w
8.2.2	Operation	51 ^w
8.3	Remote communication	53 ^w
8.3.1	TCP Client Connection	54 ^w
8.3.2	TCP Server Connection	59 ^w
8.4	Modem Communication	65 ^w
8.4.1	Connection	65 ^w
8.4.2	Operation	65 ^w
8.5	Template example	67 ^w
9	Communication with 21C	76 ^w
9.1	Device management	76 ^w
9.1.1	General	76 ^w
9.1.2	Communication medium	77 ^w
9.1.3	Protocol suite	78 ^w
9.1.4	Security mechanism	78 ^w
9.2	Local communication	79 ^w
9.2.1	Connection	79 ^w
9.2.2	Operation	79 ^w
9.3	Template example	82 ^w
10	Communication with HX645	84 ^w
10.1	Parameters configuration	84 ^w
10.1.1	Connection	84 ^w
10.1.2	Operation	85 ^w
10.2	AT Command	91 ^w
10.2.1	Operation	91 ^w
10.3	Firmware upgrade	95 ^w
10.3.1	Locally upgrade	95 ^w
10.3.2	Remotely upgrade	97 ^w
10.3.3	FTP upgrade	100 ^w
11	Communication with UTC	106 ^w
11.1	Device management	106 ^w
11.1.1	General	107 ^w
11.1.2	Communication medium	107 ^w
11.1.3	Protocol suite	108 ^w
11.1.4	Security mechanism	108 ^w
11.2	Local communication	109 ^w
11.2.1	Connection	109 ^w
11.2.2	Operation	109 ^w
11.3	Template example	111 ^w

五、Menu



- 
Read : Read data from equipment, such as electricity consumption, settlement, load, etc
- 
Write/Action : Set device parameters, such as clock, rate, display, etc
- 
Export : Export parameters such as rates, display items, power grid quality, etc
- 
Import : Importing saved parameters is the opposite of the export process



- **Report:** Export data reports, supporting Excel, PDF, CSV, Word formats



- **User management:** User management, creating, editing, deleting, etc



- **Role management:** Role management, creating, editing, deleting, etc



- **Password modification:** Change User Password



- **Password security policy:** Password validity period, length limit, etc



- **TCP connection management :** The IP and port that need to be monitored when using 4.0 Pro as a server