



Maximum Performance



UDR250 - 285 - 345 & UDD285

FEATURES AND BENEFITS

- Standard galvanized drum with large diameter
- Large door opening for easy loading & unloading
- ECO Version: All dryers are available with reduced kW heating element
- Cloud - based platform to easily monitor your laundry everywhere and at any time
- Self cleaning lint screen
- Combination of radial and axial airflow
 - maximal heat transfer
 - low energy consumption
 - short drying time

OPTIONS

- Stainless steel front
- Reversing drum
- Double door glass and insulation
- Residual moisture control:
 - safe drying of delicate linen
 - humidity detection in %
 - ideal for dry cleaners, fire depts
- WiFi kit - to order through Accessories

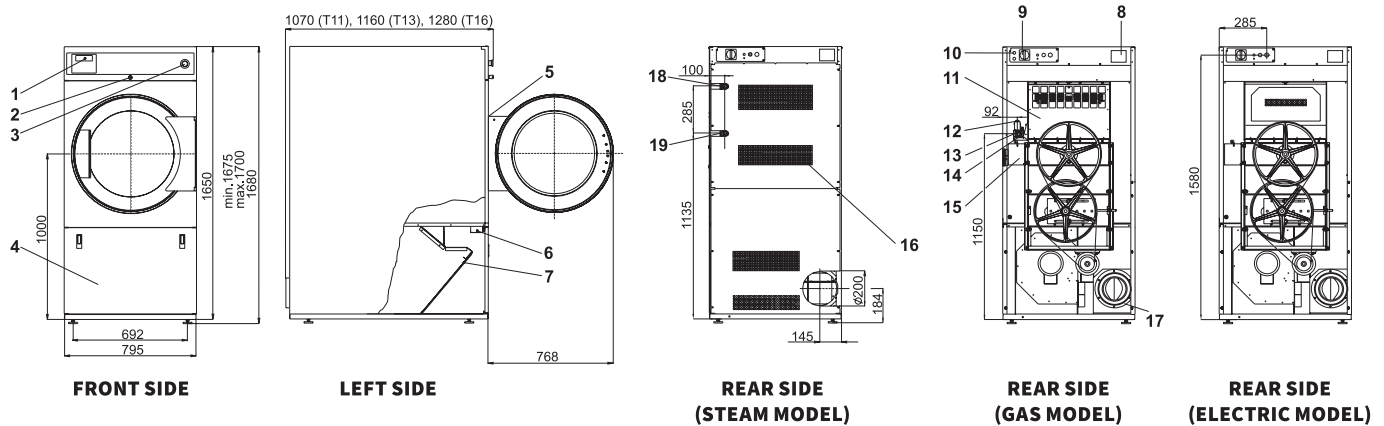
CONTROL

- Easy - To - Use Microprocessor (ECT) - intuitive control with simple selection of 3 programs
- Full Control Programmer (FCT) - fully programmable timer with possibility of residual moisture control

TUMBLE DRYER & STACKED TUMBLE DRYER

| TYPE | | UDR345 |
|---------------------------|-------------------|---|
| CAPACITY | | |
| Capacity 1:18 | kg (lb) | 19(42) |
| Capacity 1:22 | kg (lb) | 16(35) |
| Drum volume | l | 345 |
| Drum diameter | mm | Ø 760 |
| AIRFLOW | m ³ /h | 600 |
| DRYING AVERAGE | l/min. | 300 |
| MOTORS | | |
| Fan | kW | 0,55 |
| Drive | kW | 0,25 |
| GAS HEATING | | |
| Gas connection | NPT | 1/2" |
| Electrical connection | | 3x380 - 415V 50Hz, 3x380 - 415V 60Hz, 3x380 - 415V +N 50Hz, 3x380 - 415V +N 60Hz, 3x208 - 240V 50Hz, 3x208 - 240V 60Hz, 208 - 240V 50Hz 1Ph, 208 - 240V 60Hz 1Ph, 3x440V 60Hz, 3x480V 50Hz, 3x480V 60Hz |
| Energy | kW | 25 |
| | kBTU/h | 85,3 |
| STEAM HEATING | | |
| Steam connection | NPT | 3/4" |
| Electrical connection | | 3x380 - 415V 50Hz, 3x380 - 415V 60Hz, 3x208 - 240V 50Hz, 3x208 - 240V 60Hz, 208 - 240V 50Hz 1Ph, 208 - 240V 60Hz 1Ph, 3x440V 60Hz, 3x480V 50Hz, 3x480V 60Hz |
| Steam output * | kW | 22 - 32 |
| Steam pressure | bar | 3 - 6/7 - 10 |
| ELECTRICAL HEATING | | |
| Electrical connection | | 3x380 - 415V 50Hz, 3x380 - 415V 60Hz, 3x208 - 240V 50Hz, 3x208 - 240V 60Hz, 3x440V 60Hz, 3x480V 50Hz, 3x480V 60Hz |
| Energy | kW | 12- 16 |
| EXHAUST | | |
| | mm | 200 |
| DIMENSIONS | | |
| H×W×D | mm | 1680x795x1280 |
| Net weight | kg | 250 |
| TRANSPORT DATA | | |
| Packed H×W×D | mm | 1785x855x1310 |
| Gross weight | kg | 270 |

* Steam output is flexible depending on steam pressure, The data concerning dimensions of machines include all extended parts



1. Programmer
2. Emergency stop button
3. Lint screen cover
4. Door lock microswitch
5. Lint cover microswitch
6. Lint screen
7. Name plate

8. Main switch
9. Main power supply
10. Heating chamber
11. Gas valve (G models only)
12. Pressure regulator (G models only)
13. Gas supply (G models only)
14. Airflow switch

15. Suction
16. Exhaust piping

CONSULT YOUR SALES REPRESENTATIVE FOR AVAILABILITY

For the most accurate information, the installation guide should be used for all design and construction purposes. Due to continuous product improvements, design and specifications are subject to change without notice. www.unimac.com

UniMac by Alliance Laundry Systems