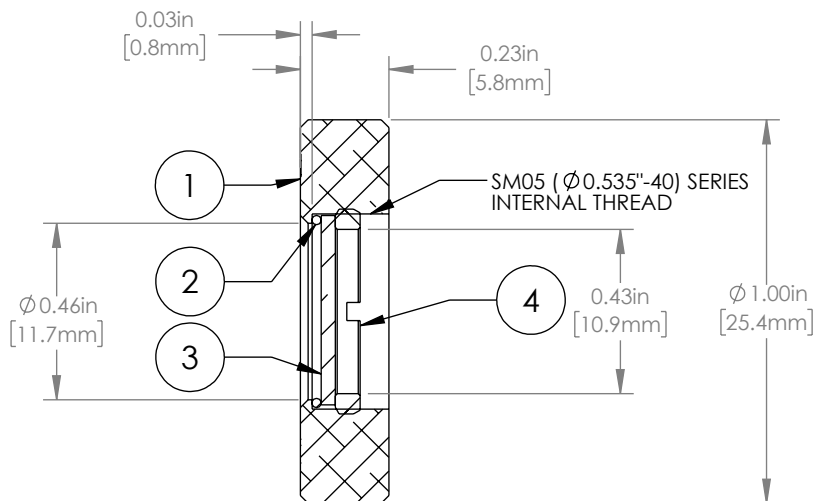
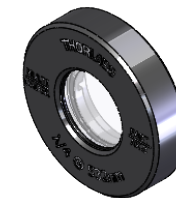
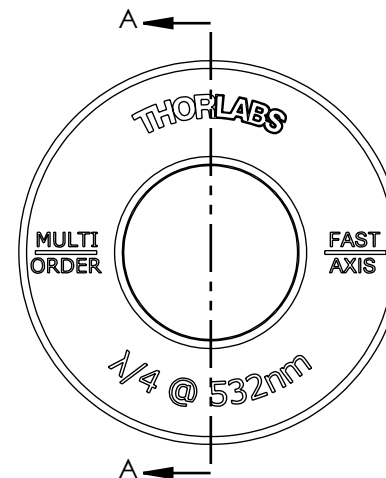


ORDER OF ASSEMBLY

ORDER	ITEM NUMBER	MATERIAL
①	ENGRAVED HOUSING	ALUMINUM
②	O-RING	NITRILE
③	532 nm WAVEPLATE	CRYSTAL QUARTZ
④	SM05RR	ALUMINUM



SECTION A-A



NOTES/SPECIFICATIONS:

1. UNMOUNTED DIAMETER: 0.50" ±0.004 (12.7 mm ±0.1)
2. BEAM DEVIATION: <10 arcsec
3. RETARDANCE ACCURACY (TYP): <λ/100
4. TRANSMITTED WAVEFRONT ERROR: λ/10 (rms) AT 633 nm
5. SURFACE QUALITY: 20-10 SCRATCH-DIG
6. CLEAR APERTURE: Ø0.39" (Ø10.0 mm)
7. COATING: VAR AT 532 nm, R<0.25%, 0° AOI/PER SURFACE (2 TOTAL SURFACES)

FOR INFORMATION ONLY  
NOT FOR MANUFACTURING PURPOSES

DRAWING PROJECTION			 www.thorlabs.com <b>MOUNTED MULTI-ORDER                  QUARTER WAVEPLATE AT 532 nm</b>	
NAME	DATE			
DRAWN	EMT	21/JAN/13	MATERIAL <b>SEE TABLE</b>	
APPROVAL	MG	23/FEB/23		
COPYRIGHT © 2023 BY THORLABS VALUES IN PARENTHESIS ARE CALCULATED AND MAY CONTAIN ROUND OFF ERRORS			ITEM #	APPROX WEIGHT
			WPMQ05M-532	6 g