

# CCR2004-16G-2S+

This powerful and affordable router crushes all previous CCR models in single-core performance.

**Luxury you deserve for the price you can afford.**



*Best single-core performance in the CCR family  
Built-in dual redundant power supplies*



16x Gigabit Ethernet ports



2x 10G SFP+ cages



RJ-45 console port

Like the other models in CCR2004 series, this CCR also features the Amazon Annapurna Labs Alpine v2 CPU with 4x 64-bit ARMv8-A Cortex-A57 cores running at 1,7GHz. But here's the difference. This powerful router crushes all previous CCR models in single-core performance, and that is the most important aspect when it comes to heavy operations based on per-connection processing. Like queues, for example.

But that's not all! It also has the best single-core performance per watt and best overall performance per watt among all the CCR devices. **Better for the planet, better for the bills, it's a win-win!**



The new router has 18 wired ports, including 16x Gigabit Ethernet ports and two 10G SFP+ cages. It also has a RJ-45 console port on the front panel.

Like all CCR devices, it comes in a classic white 1U rackmount case. Built-in dual redundant power supplies are included, so you have one less thing to worry about. And, of course, there is active cooling to keep things nice and cool.

Each group of 8 Gigabit Ethernet ports is connected to a separate Marvell Amethyst family switch-chip. Each switch chip has a 10 Gbps full-duplex line connected to the CPU. The same goes for each SFP+ cage - a separate 10 Gbps full-duplex line. Boards come with 4GB of DDR4 RAM and 128MB of NAND storage.



So as you can see - no bottlenecks. As long as the CPU can handle the processing, all ports can reach wire speed. And this CPU is a beast that can handle a lot. If we look at the performance, you can see that it is trading blows with our CCR1009. Even surpassing it in CPU-heavy configurations! And if that wasn't enough – it can even reach the performance of CCR1016.

**CCR1009-7G-1C-S+**



**Bridging**

Configuration	64 byte		512 byte		1518 byte	
	kpps	Mbps	kpps	Mbps	kpps	Mbps
none (fast path)	9816.7	5340.3	3759.4	15398.5	1300.4	15791.9
25 bridge filter rules	1868.4	1016.4	1817.6	7445.1	1300.4	15791.9

**Routing**

Configuration	64 byte		512 byte		1518 byte	
	kpps	Mbps	kpps	Mbps	kpps	Mbps
none (fast path)	11627.7	6325.5	3759.4	15398.5	1300.4	15791.9
25 simple queues	960.2	522.4	964.1	3948.8	917.5	11142.1
25 ip filter rules	638	347	639.2	2618	615.8	7477.9

**CCR2004-16G-2S+**



**Bridging**

Configuration	64 byte		512 byte		1518 byte	
	kpps	Mbps	kpps	Mbps	kpps	Mbps
none (fast path)	9697.9	5275.7	5648.4	23136	2591.6	31472
25 bridge filter rules	2424.2	1318.8	2451.7	10042.1	2249.5	27318.5

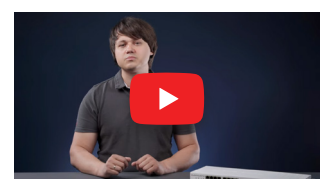
**Routing**

Configuration	64 byte		512 byte		1518 byte	
	kpps	Mbps	kpps	Mbps	kpps	Mbps
none (fast path)	8664.2	4713.3	5239.6	21461.2	2532.4	30753.8
25 simple queues	1316.8	716.3	1217.6	4987.2	1174.6	14264.6
25 ip filter rules	842.1	458.1	860.7	3525.5	866	10517.1

The best part? This brand new CCR is among the most affordable options out there - not only within the CCR series, but on the market in general.

One of the most common ways to use this device would be: Gigabit Ethernet ports for the internal network; SFP+ ports for downlink and uplink. The perfect all-in-one solution for small and medium-sized businesses. Easy and efficient.

With the new CCR2004, you can take your office network to the next level. Without breaking the bank.



## Specifications

Product code	CCR2004-16G-2S+
CPU	AL32400 1.7 GHz
CPU architecture	ARM 64bit
CPU core count	4
Size of RAM	4 GB
RAM type	DDR4
Storage	128 MB, NAND
Number of 1G Ethernet ports	16
Number of 10G SFP+ ports	2
Operating system	RouterOS v7 only
Switch chip model	88E6191X, 88E619X
Dimensions	443 x 210 x 44 mm
Operating temperature	-20°C to +60°C

## Powering

Number of AC inputs	2
AC input range	100-240 V
Max power consumption (without attachments)	35 W
Max power consumption	48 W

## Certification & Approvals

Certification	CE, FCC, IC
---------------	-------------

## Included parts



2 Power  
cords



Rackmount  
bracket white



Fastening  
set



## CRS328-24P-4S+RM

CRS328-24P-4S+RM is a 28 independent port switch, it has 24 Gigabit Ethernet ports, which offer different power output options: Passive PoE, low voltage PoE, 802.3af/at (Type 1 “PoE” / Type 2 “PoE+”) with auto-sensing. The four SFP+ ports provide up to 10 Gbps connectivity options via either optical fiber or Ethernet modules (not included).

CRS328-24P-4S+RM comes in a 1U rackmount case with 100-240 V AC 500 W power supply built-in. The device consumes up to 44 W leaving guaranteed 450 W (3x150 W per every 8 Ethernet ports) to power your PoE devices. Each port can provide up to 30 W with high voltage, and 26 W with low voltage power output.

The device has a “Dual boot” feature that allows you to choose between two operating systems - RouterOS or SwOS. If you prefer to have a simplified operating system with only switch specific features, use SwOS. If you would like the ability to use routing and other Layer 3 features in your CRS, use RouterOS. You can select the desired operating system from RouterOS, from SwOS or from the RouterBOOT loader settings. All the feature set comes with our disruptive price, providing best price/performance on the market.

## Switching features

- Non-blocking Layer 2 switching capacity
- 16K host table
- IEEE 802.1Q VLAN
- Supports up to 4K simultaneous VLANs
- Port isolation
- Port security
- Broadcast storm control
- Port mirroring of ingress/egress traffic
- STP / RSTP / MSTP
- Access Control List
- MikroTik neighbor discovery
- SNMP
- 10218-byte jumbo frames support
- IGMP snooping
- IEEE 802.3ad and static link aggregation

## Quick specifications

- 24 Gigabit Ethernet ports
- 4 SFP+ ports
- RJ45 serial console port
- Non-Blocking throughput: 64 Gbps
- Switching capacity: 128 Gbps
- Forwarding rate: 95.2 Mpps
- Maximum power consumption: 44 W (without PoE devices connected)
- Supports PoE+ IEEE 802.3at/af and 26 V Passive PoE
- Temperature based fan control
- 1U rackmount
- Selectable power output per port (26 / 53 V)



## Specifications

Product code	CRS328-24P-4S+RM
CPU	98DX3236A1 800 MHz
RAM	512 MB
Storage type	Flash
Storage size	16 MB
Switch chip model	98DX3236A1
10/100/1000 Ethernet ports	24
SFP+ cages	4
Operating system	SwOS / RouterOS (Dual boot)
Supported input voltage	100 - 240 V
Dimensions	443 x 300 x 44 mm
Operating temperature	-20°C .. +60°C tested
Max power consumption	44 W
Serial port	RJ45
License level	5



## CRS326-24G-2S+RM

We are announcing a special version of the CSS326-24G-2S+RM switch, with added RouterOS as a second boot option, the new CRS326-24G-2S+RM.

This is a SwOS/RouterOS powered 24 port Gigabit Ethernet switch with two SFP+ ports, wire speed connectivity with several new switching features!

The “Dual boot” feature that allows you to choose which operating system you prefer to use, RouterOS or SwOS. If you prefer to have a simplified switch only OS with more switch specific features, use SwOS. If you are used to Winbox and would like the ability to use routing and other Layer 3 features on some ports in your CRS, boot and use RouterOS. You can select the desired operating system from RouterOS, from SwOS or from the RouterBOOT loader settings.

It gives you all the basic functionality for a managed switch, plus more: allows to manage port-to-port forwarding, apply MAC filter, configure VLANs, mirror traffic, apply bandwidth limitation and even adjust some MAC and IP header fields. SFP cage supports both 1.25 Gb SFP and 10 Gb SFP+ modules.

## Specifications

Product code	CRS326-24G-2S+RM
CPU	98DX3236A1 800 MHz
RAM	512 MB
Storage type	Flash, 16 MB
Switch chip model	98DX3236A1
10/100/1000 Ethernet ports	24
SFP+ cages	2
Operating system	SwOS /RouterOS (Dual boot)
Supported input voltage	9 - 30 V (jack or passive PoE)
Dimensions	443 x 144 x 44 mm
Operating temperature	-40°C .. +60°C tested
Max power consumption	24 W
Serial port	RJ45

## Features

- Non-blocking Layer 2 switching capacity
- 16K host table
- IEEE 802.1Q VLAN
- Supports up to 4K VLANs
- Port isolation
- Port security
- Broadcast storm control
- Port mirroring of ingress/egress traffic
- Rapid Spanning Tree Protocol
- Access Control List
- MikroTik neighbor discovery
- SNMP v1
- Web-based GUI

## Included



24 V 1.2 A power adapter



Rack ears



Screw set





# CSS610-8P-2S+IN

Your compact, affordable PoE powerhouse



**56 GIGABIT  
SWITCHING CAPACITY**



**2X 10 GIGABIT  
SFP+ PORTS**



**8X GIGABIT POE-OUT  
ETHERNET PORTS**



**CAN BE CONFIGURED FROM  
YOUR WEB BROWSER**



**PORT-TO-PORT  
FORWARDING**



**MAC FILTERING  
& VLANS**



**TRAFFIC  
MIRRORING**



CSS610-8P-2S+IN is one of the most well-rounded switches on the market. It is a perfect fit for the most diverse setups: from home networks and small offices to hotels, call centers and so on. The unique combination of size, features, and price offers unbelievable scalability potential.

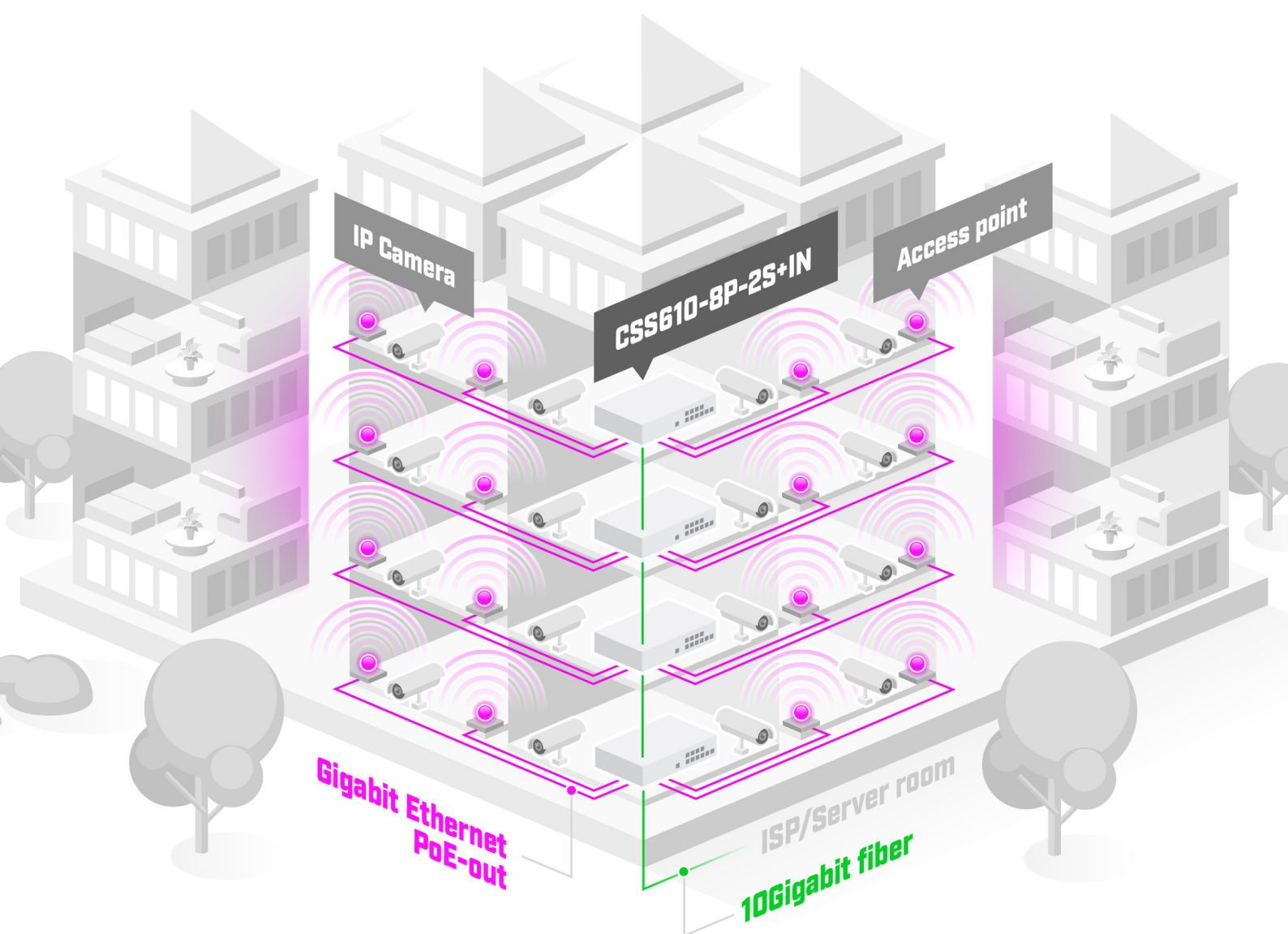


*There are two SFP+ ports for 10 Gigabit fiber connectivity and eight Gigabit Ethernet ports with 802.3af/at PoE-out.*

This switch is all about nice and easy setups. The compact form-factor means easier shipping and handling, while the lightweight SwOS means easier configuration. You can even configure this switch from your web browser! It gives you all the core functionality of a managed switch, and even more: you can manage **port-to-port forwarding**, **broadcast storm control**, apply **MAC filters**, configure **VLANs**, **mirror traffic**, **apply bandwidth limitations**, and even **adjust some MAC and IP header fields**.



But the real blessing is the combination of **SFP+** and **PoE-out Ethernet** ports. With this setup, you can do all kinds of things on a tight budget. CSS610 has an impressive total **PoE-out budget of 140 W**, so you can use even in the most intense scenarios – like hotels, conference halls, or call centers! Use the PoE-out ports to connect the IP-phones while the SFP+ ports connect your primary server to the ISP. Or power a bunch of network cameras and instantly upload the footage to the cloud. And manage a cluster of wireless access points at the same time. Also, scalability is no longer a problem. With our pricing, you can afford a switch on every floor!



Like every toolbox needs screwdrivers and pliers, every network can use a solid PoE switch.

**CSS610-8P-2S+IN – a solid choice!**

## • Specifications

Product code	CSS610-8P-2S+IN
Number of 1G Ethernet ports	8
Number of 10G SFP+ ports	2
Switch chip model	88E6193X
Dimensions	272 x 216 x 50 mm
Operating temperature	-40°C to +70°C

## • Powering

Number of DC inputs	1
DC jack input Voltage	48-57 V
Number of AC inputs	1
Nominal voltage	54 V
Nominal current	2.8 A
AC input range	100-240 V
Max power consumption (without attachments)	12 W
Max power consumption	162 W
PoE-out	802.3af/at & Passive PoE
Smart PoE	Controller
PoE-out ports	Ether1-Ether8, max out per port output (input < 30 V): 1000 mA, max out per port output (input > 30 V): 625 mA
Total output power	140 W

## • Included parts



Power cord



Fastening set



Rack ears

## DS-7608NI-K1/8P (D) NVR

### Key Feature

- Up to 8-ch IP camera inputs
- H.265+/H.265/H.264+/H.264 video formats
- Up to 1-ch@8 MP/3-ch@4 MP/6-ch@1080p decoding capacity
- Up to 80 Mbps incoming bandwidth



### Professional and Reliability

- H.265+ compression effectively reduces the storage space by up to 75%

### HD Video Output

- Provide simultaneous HDMI and VGA outputs
- HDMI video output at up to 4K resolution

### Storage and Playback

- 1 SATA interface for HDD connection (up to 8 TB capacity per HDD)
- Smart search/smart playback to improve the playback efficiency

### Smart Function

- 4-ch Motion Detection 2.0
- Support multiple VCA (Video Content Analytics) events
- Configurable special camera smart functions, such as VCA detection (motion, line crossing, intrusion, etc.)

### Network & Ethernet Access

- 8 independent PoE network interfaces
- 1 self-adaptive 10/100 Mbps Ethernet interface
- Hik-Connect for easy network management



## ▪ Specification

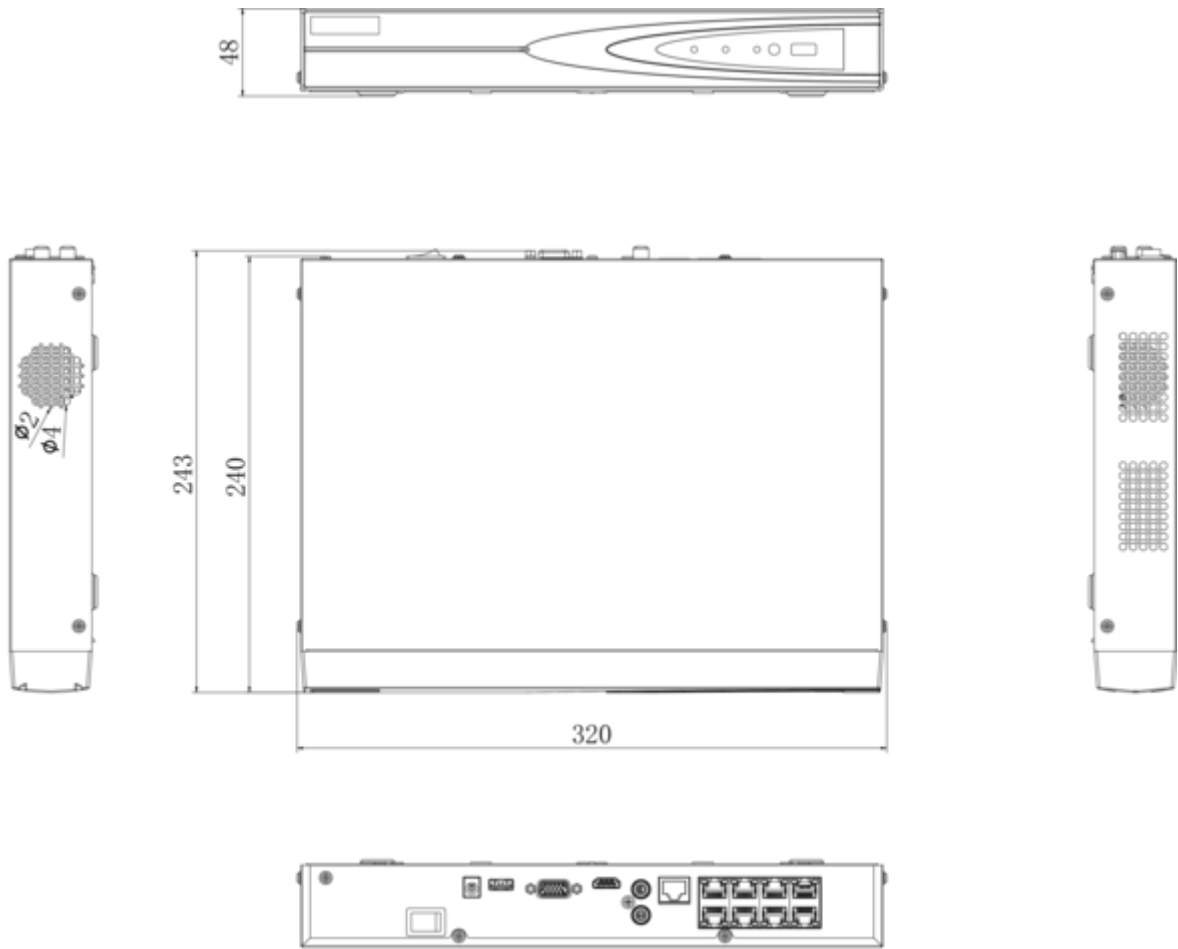
<b>Motion Detection 2.0</b>	
Human/Vehicle Analysis	4-ch
<b>Video and Audio</b>	
IP Video Input	8-ch
Incoming Bandwidth	80 Mbps
Outgoing Bandwidth	80 Mbps
HDMI Output	1-ch, 4K (4096 x 2160)/30 Hz, 4K (3840 x 2160)/30 Hz, 2K (2560 x 1440)/60 Hz, 1920 x 1080/60 Hz, 1600 x 1200/60 Hz, 1280 x 1024/60 Hz, 1280 x 720/60 Hz
VGA Output	1-ch, 1920 x 1080/60 Hz, 1280 x 1024/60 Hz, 1280 x 720/60 Hz
Video Output Mode	HDMI/VGA simultaneous output
Audio Output	1-ch, RCA (Linear, 1 K $\Omega$ )
Two-Way Audio	1-ch, RCA (2.0 Vp-p, 1k $\Omega$ )
<b>Decoding</b>	
Decoding Format	H.265+/H.265/H.264+/H.264
Recording Resolution	8 MP/6 MP/5 MP/4 MP/3 MP/1080p/UXGA/ 720p/VGA/4CIF/DCIF/2CIF/CIF/QCIF
Synchronous playback	8-ch
Decoding Capability	1-ch@8 MP (30 fps)/3-ch@4 MP (30 fps)/6-ch@1080p (30 fps) *: The length or width of camera resolution (each track) cannot exceed 4096 pixels.
Stream Type	Video, Video & Audio
Audio Compression	G.711ulaw/G.711alaw/G.722/G.726
<b>Network</b>	
Remote Connection	32
Network Protocol	TCP/IP, DHCP, IPv4, IPv6, DNS, DDNS, NTP, RTSP, SADP, SMTP, SNMP, NFS, iSCSI, ISUP, UPnP™, HTTP, HTTPS
Network Interface	1 RJ-45 10 /100 Mbps self-adaptive Ethernet interface
<b>PoE</b>	
Interface	8-ch, RJ-45 10/100 Mbps self-adaptive Ethernet interface
Power	≤ 75 W
Standard	IEEE 802.3 af/at
<b>Auxiliary Interface</b>	
SATA	1 SATA interface
Capacity	Up to 8 TB capacity for each disk
USB Interface	2 x USB 2.0
Alarm In/Out	N/A (4/1 is optional)

<b>General</b>	
Power Supply	48 VDC, 1.88 A
Consumption	≤ 10 W (without HDD and PoE off)
Working Temperature	-10 °C to 55 °C (14 °F to 131 °F)
Working Humidity	10% to 90%
Dimension (W × D × H)	320 × 240 × 48 mm (12.4" × 9.4" × 1.9")
Weight	≤ 1 kg (without HDD, 2.2 lb.)
<b>Certification</b>	
FCC	Part 15 Subpart B, ANSI C63.4-2014
CE	EN 55032: 2015, EN 61000-3-2, EN 61000-3-3, EN 50130-4, EN 55035: 2017

**Note:**

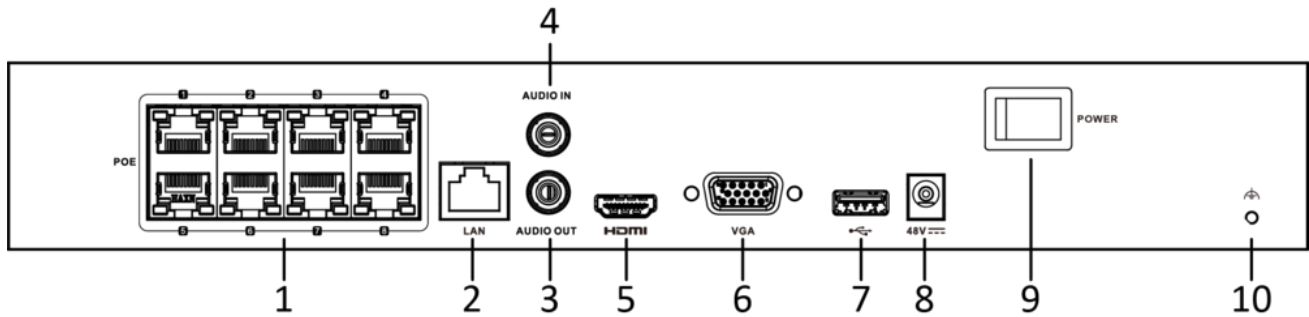
Alarm in/out can be optional for certain models. If you select a device model with "/ALARM", then the device will have 4 alarm inputs and 1 alarm output.

## Dimension



scale/1:1;Unit/mm

## Physical Interface



No.	Description	No.	Description
1	Network interfaces with PoE function	6	VGA output (DB9 connector)
2	LAN interface	7	USB interface
3	AUDIO OUT	8	Power supply
4	AUDIO IN	9	Power switch
5	HDMI interface	10	GND

## Available Model

DS-7608NI-K1/8P (D)

### Headquarters

No.555 Qianmo Road, Binjiang District,  
Hangzhou 310051, China  
T +86-571-8807-5998  
www.hikvision.com



Follow us on social media to get the latest product and solution information.



## DS-7616NI-K2/16P NVR

### Key Feature

- Up to 16-ch IP camera inputs
- H.265+/H.265/H.264+/H.264 video formats
- Up to 2-ch@8 MP or 4-ch@4 MP or 8-ch@1080p decoding capacity
- 1 HDMI and 1 VGA interfaces, both interfaces support independent video output
- 2 SATA interfaces for HDD connection (up to 10 TB capacity per HDD)
- Up to 160 Mbps incoming bandwidth
- Plug-and-play with 16 power over Ethernet (PoE) interfaces



### Professional and Reliability

- H.265+ compression effectively reduces the storage space by up to 75%
- Adopt stream over TLS encryption technology which provides more secure stream transmission service

### HD Video Output

- Provide independent HDMI and VGA outputs
- HDMI video output at up to 4K resolution

### Storage and Playback

- 2 SATA interfaces for HDD connection (up to 10 TB capacity per HDD)
- 16-ch synchronous playback

### Smart Function

- Support multiple VCA (Video Content Analytics) events
- Configurable special camera smart functions, such as VCA detection (motion, line crossing, intrusion, etc.) and ANPR

### Network & Ethernet Access

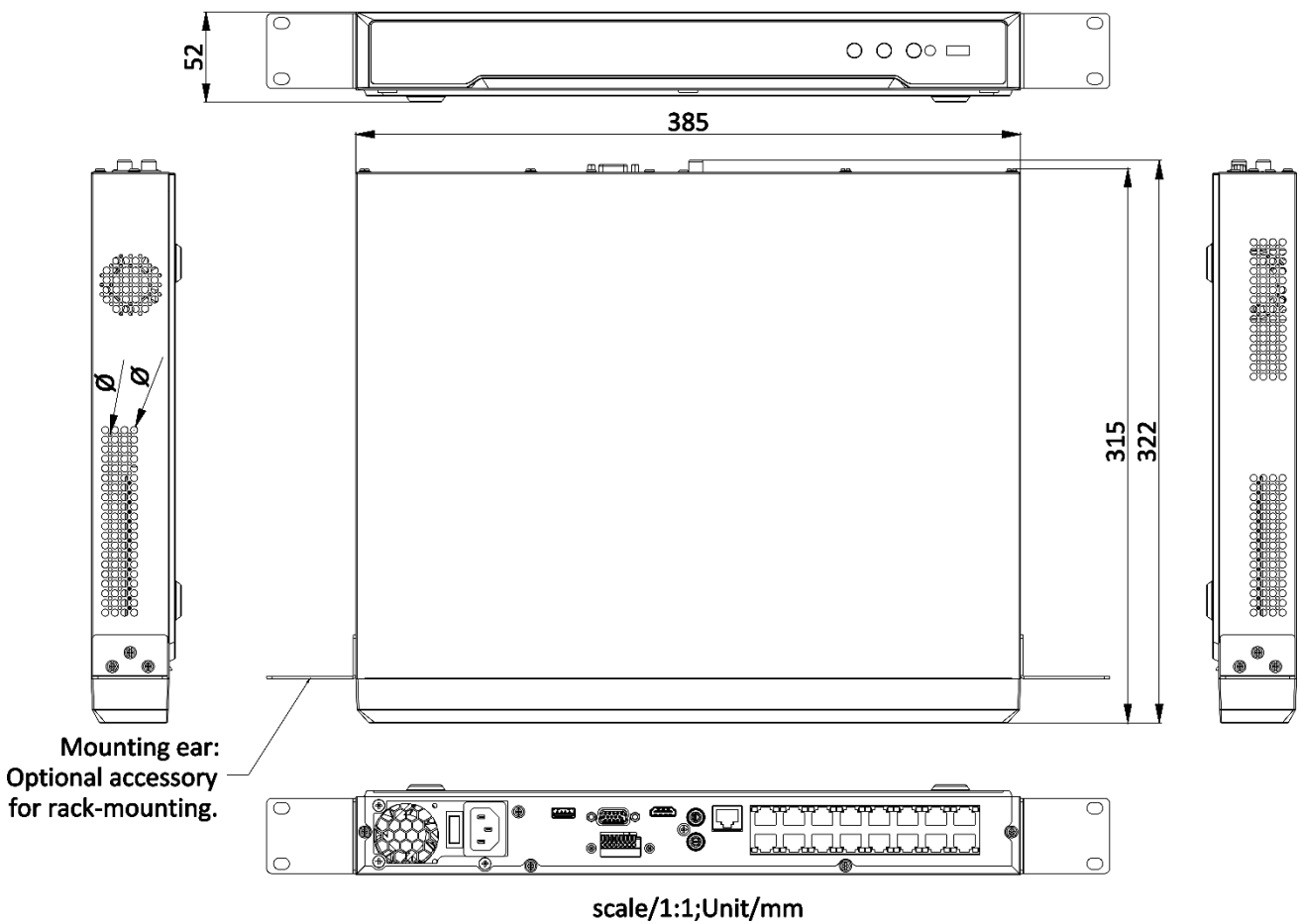
- 1 self-adaptive 10/100/1000 Mbps Ethernet interface
- 16 independent PoE network interfaces
- Hik-Connect for easy network management

## ▪ Specification

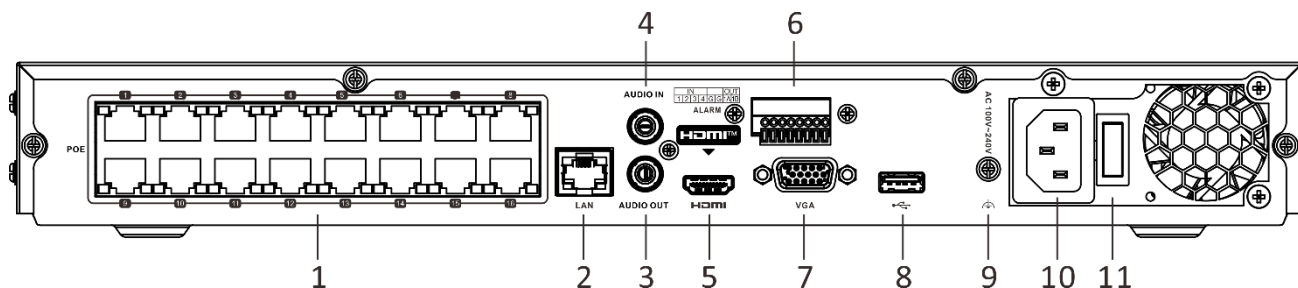
Video and Audio	
IP Video Input	16-ch
Incoming Bandwidth	160 Mbps
Outgoing Bandwidth	160 Mbps
HDMI Output	4K (3840 × 2160)/30 Hz, 2K (2560 × 1440)/60 Hz, 1920 × 1080/60 Hz, 1600 × 1200/60 Hz, 1280 × 1024/60 Hz, 1280 × 720/60 Hz
VGA Output	1920 × 1080/60 Hz, 1280 × 1024/60 Hz, 1280 × 720/60 Hz
Video Output Mode	HDMI/VGA independent output
Audio Input	1-ch, RCA (2.0 Vp-p, 1 KΩ)
Audio Output	1-ch, RCA (Linear, 1 KΩ)
Two-Way Audio	1-ch, RCA (2.0 Vp-p, 1 KΩ, using the audio input)
Decoding	
Decoding Format	H.265/H.265+/H.264/H.264+
Recording Resolution	8 MP/6 MP/5 MP/4 MP/3 MP/1080p/UXGA/720p/VGA/4CIF/DCIF/2CIF/CIF/QCIF
Synchronous Playback	16-ch
Decoding Capability	2-ch@8 MP (30 fps)/4-ch@4 MP (30 fps)/8-ch@1080p (30 fps)
Stream Type	Video, Video & Audio
Audio Compression	G.711ulaw/G.711alaw/G.722/G.726
Network	
Remote Connection	128-ch
Network Protocol	TCP/IP, DHCP, IPv4, IPv6, DNS, DDNS, NTP, RTSP, SADP, SMTP, SNMP, NFS, iSCSI, ISUP, UPnP™, HTTP, HTTPS
Network Interface	1 RJ-45 10/100/1000 Mbps self-adaptive Ethernet interface
PoE	
Interface	16, RJ-45 10/100 Mbps self-adaptive Ethernet interface
Power	≤ 200 W
Standard	IEEE 802.3 af/at
Auxiliary Interface	
SATA	2 SATA interfaces
Capacity	Up to 10 TB capacity for each HDD
USB Interface	Front panel: 1 × USB 2.0; Rear panel: 1 × USB 2.0
Alarm In/Out	4/1
General	
Power Supply	100 to 240 VAC, 50 to 60Hz
Consumption	≤ 15 W (without HDD and PoE off)

Working Temperature	-10 °C to 55 °C (14 °F to 131 °F)
Working Humidity	10 to 90 %
Dimension (W × D × H)	385 × 315 × 52 mm (15.2" × 12.4" × 2.0")
Weight	≤ 3 kg (without HDD, 6.6 lb.)
<b>Certification</b>	
FCC	Part 15 Subpart B, ANSI C63.4-2014
CE	EN 55032: 2015, EN 61000-3-2, EN 61000-3-3, EN 50130-4, EN 55035: 2017

## Dimension



## Physical Interface



No.	Description	No.	Description
1	Network interfaces with PoE function	7	VGA interface
2	LAN network interface	8	USB interface
3	AUDIO OUT	9	GND
4	AUDIO IN	10	100 to 240 VAC power supply
5	HDMI interface	11	Power switch
6	Alarm in/alarm out		

## Available Model

DS-7616NI-K2/16P

### Headquarters

No.555 Qianmo Road, Binjiang District,  
Hangzhou 310051, China  
T +86-571-8807-5998  
www.hikvision.com



Follow us on social media to get the latest product and solution information.





## DS-7700NI-K4 Series NVR

### Key Feature

- H.265+/H.265/H.264+/H.264 video formats
- Up to 8/16/32-ch IP camera inputs
- Up to 2-ch @ 8MP or 4-ch @ 4MP or 8-ch @ 1080P decoding capacity
- 1 HDMI and 1 VGA interfaces: both interfaces support independent video output
- 4 HDDs for continuous video recording
- Up to 80/160/256 Mbps incoming bandwidth



### Professional and Reliability

- H.265+ compression effectively reduces the storage space by up to 75%
- Adopt stream over TLS encryption technology which provides more secure stream transmission service

### HD Video Output

- Provide independent HDMI and VGA outputs
- HDMI video output at up to 4K resolution

### Storage and Playback

- 4 SATA interfaces for HDD connection (up to 10 TB capacity per HDD)
- 8/16-ch synchronous playback

### Smart Function

- Support multiple VCA (Video Content Analytics) events
- Configurable special camera smart functions, such as VCA detection (motion, line crossing, intrusion, etc.), heat map, ANPR, and people counting

### Network & Ethernet Access

- 2 self-adaptive 10/100/1000 Mbps Ethernet interfaces
- Hik-Connect for easy network management



## Specification

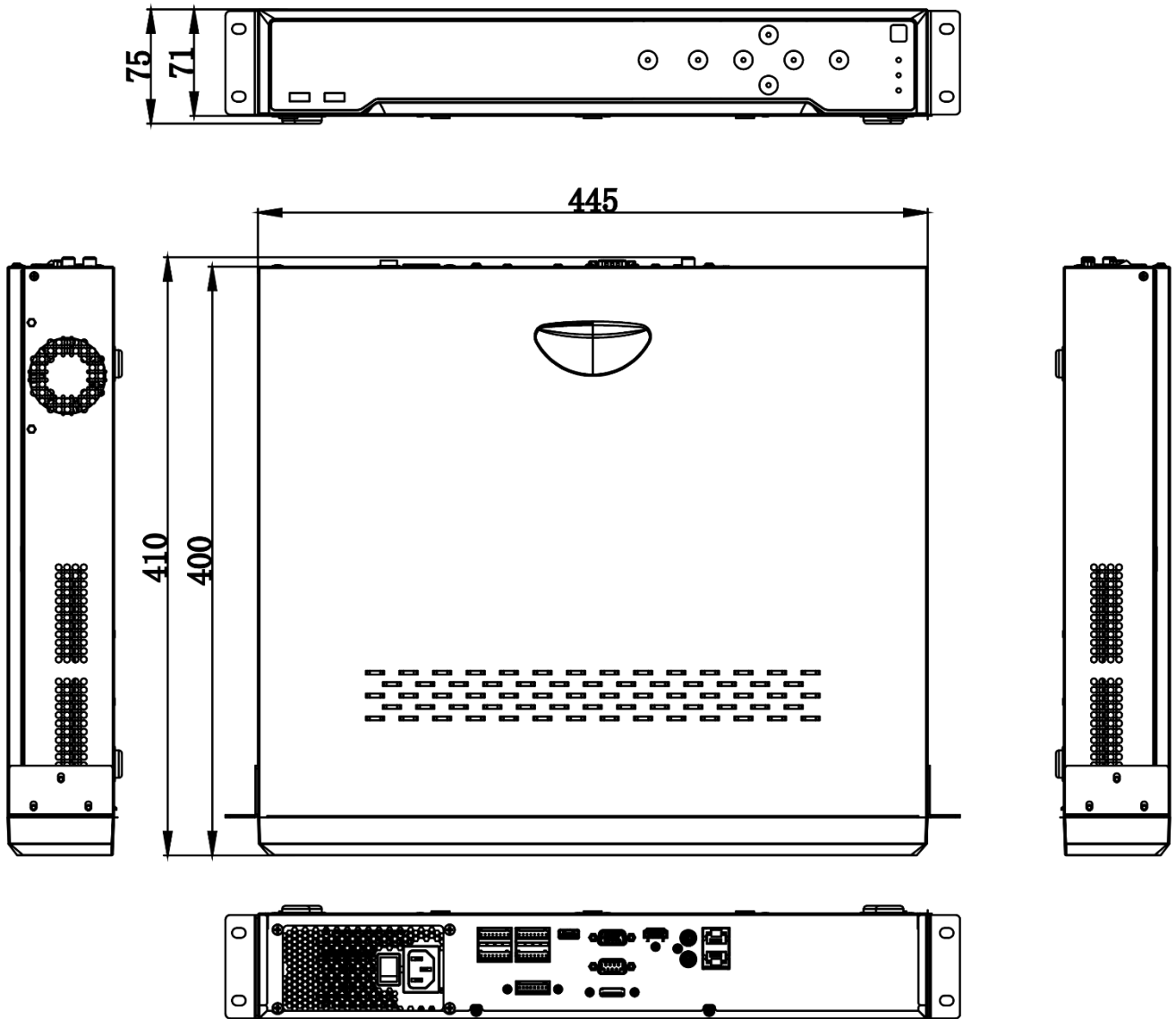
Model	DS-7708NI-K4	DS-7716NI-K4	DS-7732NI-K4
<b>Video and Audio</b>			
<b>IP video input</b>	8-ch	16-ch	32-ch
	Up to 12 MP resolution		
<b>Incoming bandwidth</b>	80 Mbps	160 Mbps	256 Mbps
<b>Outgoing bandwidth</b>	160 Mbps		
<b>HDMI output</b>	1-ch, 4K (3840 x 2160)/30 Hz, 2K (2560 x 1440)/60 Hz, 1920 x 1080/60 Hz, 1600 x 1200/60 Hz, 1280 x 1024/60 Hz, 1280 x 720/60 Hz, 1024 x 768/60Hz		
<b>VGA output</b>	1-ch, 1920 x 1080/60 Hz, 1280 x 1024/60 Hz, 1280 x 720/60 Hz, 1024 x 768/60Hz		
<b>Video output mode</b>	HDMI/VGA independent output		
<b>CVBS output</b>	N/A		
<b>Audio output</b>	1-ch, RCA (Linear, 1 KΩ)		
<b>Two-way audio input</b>	1-ch, RCA (2.0 Vp-p, 1 KΩ, using the audio input)		
<b>Decoding</b>			
<b>Decoding format</b>	H.265/H.265+/H.264/H.264+		
<b>Recording resolution</b>	12 MP/8 MP/6 MP/5 MP/4 MP/3 MP/1080p/UXGA/ 720p/VGA/4CIF/DCIF/2CIF/CIF/QCIF		
<b>Synchronous playback</b>	8-ch	16-ch	
<b>Capability</b>	1-ch@12MP (30fps)/2-ch@8 MP (30 fps)/4-ch@4 MP (30 fps)/8-ch@1080p(30 fps)		
<b>Stream type</b>	Video, Video & Audio		
<b>Audio compression</b>	G.711ulaw/G.711alaw/G.722/G.726		
<b>Network</b>			
<b>Remote connection</b>	64-ch		128-ch
<b>Network protocol</b>	TCP/IP, DHCP, IPv4, Hik-Connect, DNS, DDNS, NTP, RTSP, SADP, SMTP, SNMP, NFS, iSCSI, ISUP, UPnP™, HTTP, HTTPS		
<b>Network interface</b>	2, RJ-45 10/100/1000 Mbps self-adaptive Ethernet interfaces		
<b>Auxiliary Interface</b>			
<b>Serial interface</b>	2 RS-485 (half-duplex), 1 RS-232		
<b>SATA</b>	4 SATA interfaces		
<b>Capacity</b>	Up to 10TB capacity for each disk		
<b>Alarm in/out<sup>1</sup></b>	16/4	16/4 (16/9 is optional)	
<b>USB interface</b>	Front panel: 2 x USB 2.0; Rear panel: 1 x USB 3.0		
<b>General</b>			
<b>Power supply</b>	100 to 240 VAC, 50 to 60Hz		

<b>Consumption (without HDD)</b>	≤ 20 W
<b>Working temperature</b>	-10 °C to 55 °C (14 °F to 131 °F)
<b>Working humidity</b>	10% to 90%
<b>Dimension (W × D × H)</b>	445 × 400 × 71 mm ( 17.5"× 15.7" × 2.8")
<b>Weight (without HDD)</b>	≤ 5 kg (11 lb.)
<b>Certification</b>	
<b>FCC</b>	Part 15 Subpart B, ANSI C63.4-2014
<b>CE</b>	EN 55032: 2015, EN 61000-3-2, EN 61000-3-3, EN 50130-4, EN 55035: 2017

**Note:**

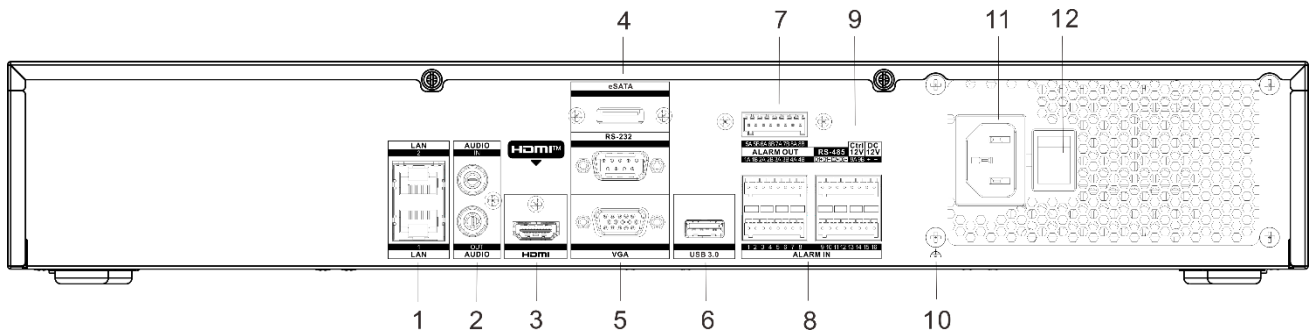
1: Alarm in/out can be optional for certain models. If you select a device model with "/ALARM 16+9", the device will have 16 alarm inputs and 9 alarm outputs. The 9<sup>th</sup> alarm output supports control 12V.

Dimension



scale/1:1;Unit/mm

## Physical Interface

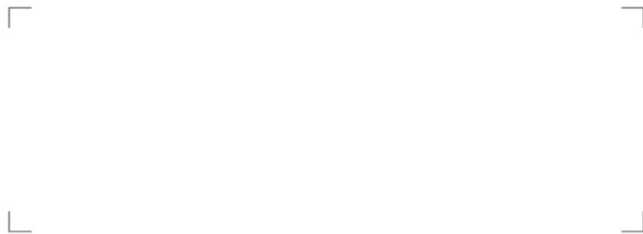


No.	Description	No.	Description
1	LAN1 and LAN2 Network Interfaces	7	ALARM OUT
2	AUDIO IN and AUDIO OUT	8	ALARM IN
3	HDMI Interface	9	RS-485 Serial Interface
4	eSATA and RS-232 Serial Interface	10	GND
5	VGA Interface	11	100 to 240 VAC Power Input
6	USB 3.0 Interface	12	Power Switch

## Available Model

DS-7708NI-K4, DS-7716NI-K4, DS-7732NI-K4

Distributed by



### Headquarters

No.555 Qianmo Road, Binjiang District,  
Hangzhou 310051, China  
T +86-571-8807-5998  
overseasbusiness@hikvision.com

**Hikvision USA**  
T +1-909-895-0400  
sales.usa@hikvision.com

**Hikvision Australia**  
T +61-2-8599-4233  
salesau@hikvision.com

**Hikvision India**  
T +91-22-28469900  
sales@pramahikvision.com

**Hikvision Canada**  
T +1-866-200-6690  
sales.canada@hikvision.com

**Hikvision Thailand**  
T +662-275-9949  
sales.thailand@hikvision.com

**Hikvision Europe**  
T +31-23-5542770  
sales.eu@hikvision.com

**Hikvision Italy**  
T +39-0438-6902  
info.it@hikvision.com

**Hikvision Brazil**  
T +55 11 3318-0050  
Latam.support@hikvision.com

**Hikvision Turkey**  
T +90 (216)521 7070- 7074  
sales.tr@hikvision.com

**Hikvision Malaysia**  
T +601-7652-2413  
sales.my@hikvision.com

**Hikvision UK & Ireland**  
T +01628-902140  
sales.uk@hikvision.com

**Hikvision South Africa**  
Tel: +27 (10) 0351172  
sale.africa@hikvision.com

**Hikvision France**  
T +33(0)1-85-330-450  
info.fr@hikvision.com

**Hikvision Kazakhstan**  
T +7-727-9730667  
nikia.panfilov@hikvision.ru

**Hikvision Vietnam**  
T +84-974270888  
sales.vt@hikvision.com

**Hikvision UAE**  
T +971-4-4432090  
salesme@hikvision.com

**Hikvision Singapore**  
T +65-6684-4718  
sg@hikvision.com

**Hikvision Spain**  
T +34-91-737-16-55  
info.es@hikvision.com

**Hikvision Tashkent**  
T +99-87-1238-9438  
uzb@hikvision.ru

**Hikvision Hong Kong**  
T +852-2151-1761  
info.hk@hikvision.com

**Hikvision Russia**  
T +7-495-669-67-99  
saleru@hikvision.com

**Hikvision Korea**  
T +82-(0)31-731-8817  
sales.korea@hikvision.com

**Hikvision Poland**  
T +48-22-460-01-50  
info.pl@hikvision.com

**Hikvision Indonesia**  
T +62-21-2933759  
Sales.Indonesia@hikvision.com

**Hikvision Colombia**  
sales.colombia@hikvision.com

04311052010811

## DS-2CD2T45G0P-I 4MP IR Bullet Network Camera



- 1/2.7" Progressive Scan CMOS
- 2688 × 1520 @ 25fps
- 1.68 mm ultra wide angle fixed lens
- 120dB WDR

- H.265+, H.265, H.264+, H.264
- Built-in micro SD/SDHC/SDXC card slot, up to 256 GB
- IP67

### DORI

The DORI (detect, observe, recognize, identify) distance gives the general idea of the camera ability to distinguish persons or objects within its field of view.

It is calculated based on the camera sensor specification and the criteria given by EN 62676-4: 2015.

DORI	Detect	Observe	Recognize	Identify
Distance	3.6 m	1.4 m	0.8 m	0.4 m



## Specifications

Camera	
Image Sensor	1/2.7" Progressive Scan CMOS
Min. Illumination	0.028 Lux @ (F2.0, AGC ON), 0 Lux with IR
Shutter Speed	1/3 s to 1/100,000 s
Slow Shutter	Yes
Day & Night	ICR Cut
WDR	120 dB
Angle Adjustment	Pan: 0° to 360°, tilt: 0° to 90°, rotate: 0° to 360°
Lens	
Lens Type	1.68 mm
Focus	Fixed
Aperture	F2.0
FOV	Horizontal: 180°, vertical: 101°, diagonal: 180°
Lens Mount	M12
Illuminator	
IR Range	20 m
Wavelength	850 nm
Smart Supplement Light	Yes
Video	
Max. Resolution	2688 × 1520
Main Stream	50Hz: 25fps (2688 × 1520, 2304 × 1296, 1920 × 1080, 1280 × 720) 60Hz: 24fps (2688 × 1520), 30fps (2304 × 1296, 1920 × 1080, 1280 × 720)
Sub-Stream	50Hz: 25fps (640 × 480, 640 × 360, 320 × 240) 60Hz: 30fps (640 × 480, 640 × 360, 320 × 240)
Video Compression	Main stream: H.265+/H.265/H.264+/H.264 Sub-stream: H.265/H.264 /MJPEG
H.264 Type	Main Profile/High Profile
H.265 Type	Main Profile
Video Bit Rate	32 Kbps to 16 Mbps
Bit Rate Control	CBR/VBR
Stream Type	Main stream, sub-stream
Scalable Video Coding (SVC)	H.264 and H.265
Smart Feature-Set	
Smart Event	Line crossing detection, intrusion detection, unattended baggage detection, object removal detection, face detection, scene change detection

Linkage Method	Upload to FTP/NAS/memory card, notify surveillance center, send email, trigger alarm output, trigger recording, trigger capture. Trigger recording: memory card, network storage, pre-record and post-record. Trigger captured pictures uploading: FTP, SFTP, HTTP, NAS, Email. Trigger notification: HTTP, ISAPI, alarm output, Email
Region of Interest (ROI)	1 fixed region for main stream and sub-stream
<b>Image</b>	
Image Enhancement	BLC, HLC, EIS, Lens distortion, 3D DNR
Image Setting	Saturation, brightness, contrast, sharpness, rotate mode, white balance, AGC
Day/Night Switch	Day/Night/Auto/Schedule
SNR	≥ 50 dB
Privacy Mask	4 regions of privacy mask
<b>Network</b>	
Network Storage	micro SD/SDHC /SDXC (256 G) local storage, and NAS (NFS, SMB/CIFS), auto network replenishment (ANR)
Protocols	TCP/IP, ICMP, HTTP, HTTPS, FTP, DHCP, DNS, DDNS, RTP, RTSP, PPPoE, NTP, UPnP, SMTP, SNMP, IGMP, 802.1X, QoS, IPv6, UDP, Bonjour, SSL/TLS, WebSocket, WebSockets
API	ONVIF (PROFILE S, PROFILE G), ISAPI, SDK
Security	Password protection, complicated password, HTTPS encryption, 802.1X authentication (EAP-TLS 1.2, EAP-LEAP, EAP-MD5), watermark, IP address filter, basic and digest authentication for HTTP/HTTPS, WSSE and digest authentication for ONVIF, TLS1.2
Simultaneous Live View	Up to 6 channels
User/Host	Up to 32 users, 3 levels: administrator, operator and user
Client	iVMS-4200, Hik-Connect, Hik-Central
Web Browser	Plug-in required live view: Chrome 45.0+, Firefox 52.0+ Plug-in free live view: Chrome 41.0+, Firefox 30.0+
<b>Interface</b>	
Communication Interface	1 RJ45 10M/100M self-adaptive Ethernet port
On-board storage	Built-in micro SD/SDHC/SDXC slot, up to 256 GB
Hardware Reset	Yes
<b>General</b>	
Web Client Language	32 languages English, Russian, Estonian, Bulgarian, Hungarian, Greek, German, Italian, Czech, Slovak, French, Polish, Dutch, Portuguese, Spanish, Romanian, Danish, Swedish, Norwegian, Finnish, Croatian, Slovenian, Serbian, Turkish, Korean, Traditional Chinese, Thai, Vietnamese, Japanese, Latvian, Lithuanian, Portuguese (Brazil)
General Function	Privacy mask, heartbeat, mirror, flash log, password reset via e-mail, pixel counter
Startup and Operating Conditions	-30 °C to 60 °C (-22 °F to 140 °F), humidity 95% or less (non-condensing)
Storage Conditions	-30 °C to 60 °C (-22 °F to 140 °F), humidity 95% or less (non-condensing)
Power Supply	12 VDC ± 25%; PoE (802.3at, class 4)



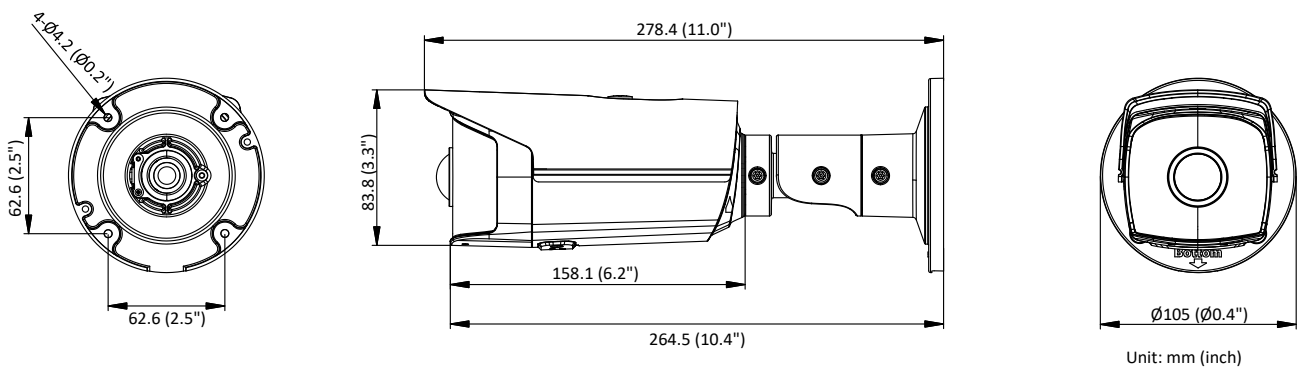
Power Consumption and Current	12 VDC, 0.6 A, max. 7.2W PoE: (802.3af, 36 V-57 V), 0.3 A to 0.2 A, max. 8.7W
Power Interface	Φ5.5 mm coaxial power plug
Material	Metal
Dimensions	Camera: Φ105 × 278 mm (Φ4.1" × 10.9") With package: 386 × 156 × 155 mm (15.20" × 6.14" × 6.10")
Weight	Camera: 570 g (1.26 lb.) With package: 760 g (1.68 lb.)
<b>Approval</b>	
Class	Class B
Protection	IP67
EMC	FCC (47 CFR Part 15, Subpart B); CE-EMC (EN 55032: 2015, EN 61000-3-2: 2014, EN 61000-3-3: 2013, EN 50130-4: 2011 +A1: 2014); RCM (AS/NZS CISPR 32: 2015); IC (ICES-003: Issue 6, 2016); KC (KN 32: 2015, KN 35: 2015)
Safety	UL (UL 60950-1); CB (IEC 60950-1:2005 + Am 1:2009 + Am 2:2013); CE-LVD (EN 60950-1:2005 + Am 1:2009 + Am 2:2013); BIS (IS 13252(Part 1):2010+A1:2013+A2:2015); LOA (IEC/EN 60950-1)
Environment	CE-RoHS (2011/65/EU); WEEE (2012/19/EU); Reach (Regulation (EC) No 1907/2006)

\* Listed resolutions are only selectable options. It does not mean that all streams can work at their maximum resolution at the same time.

## Available Model

DS-2CD2T45G0P-I(1.68 mm)

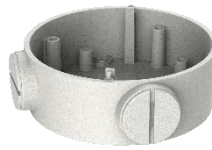
## Dimension



## Accessory



**DS-1275ZJ-SUS**  
Vertical Pole Mount



**DS-1260ZJ**  
Junction Box



**DS-1276ZJ-SUS**  
Corner Mount



**DS-1280ZJ-S**  
Junction Box



**DS-1275ZJ-S-SUS**  
Vertical Pole Mount

Distributed by



## HIKVISION®

### Headquarters

No.555 Qianmo Road, Binjiang District,  
Hangzhou 310051, China  
T +86-571-8807-5998  
overseasbusiness@hikvision.com

**Hikvision USA**  
T +1-909-895-0400  
sales.usa@hikvision.com

**Hikvision Australia**  
T +61-2-8599-4233  
salesau@hikvision.com

**Hikvision India**  
T +91-22-28469900  
sales@pramahikvision.com

**Hikvision Canada**  
T +1-866-200-6690  
sales.canada@hikvision.com

**Hikvision Thailand**  
T +662-275-9949  
sales.thailand@hikvision.com

**Hikvision Europe**  
T +31-23-5542770  
sales.eu@hikvision.com

**Hikvision Italy**  
T +39-0438-6902  
info.it@hikvision.com

**Hikvision Brazil**  
T +55 11 3318-0050  
Latam.support@hikvision.com

**Hikvision Turkey**  
T +90 (216)521 7070- 7074  
sales.tr@hikvision.com

**Hikvision Malaysia**  
T +601-7652-2413  
sales.my@hikvision.com

**Hikvision UK & Ireland**  
T +01628-902140  
sales.uk@hikvision.com

**Hikvision South Africa**  
Tel: +27 (10) 0351172  
sale.africa@hikvision.com

**Hikvision France**  
T +33(0)1-85-330-450  
info.fr@hikvision.com

**Hikvision Kazakhstan**  
T +7-727-9730667  
nikia.panfilov@hikvision.ru

**Hikvision Vietnam**  
T +84-974270888  
sales.vt@hikvision.com

**Hikvision UAE**  
T +971-4-4432090  
salesme@hikvision.com

**Hikvision Singapore**  
T +65-6684-4718  
sg@hikvision.com

**Hikvision Spain**  
T +34-91-737-16-55  
info.es@hikvision.com

**Hikvision Tashkent**  
T +99-87-1238-9438  
uzb@hikvision.ru

**Hikvision Hong Kong**  
T +852-2151-1761  
info.hk@hikvision.com

**Hikvision Russia**  
T +7-495-669-67-99  
sateru@hikvision.com

**Hikvision Korea**  
T +82-(0)31-731-8817  
sales.korea@hikvision.com

**Hikvision Poland**  
T +48-22-460-01-50  
info.pl@hikvision.com

**Hikvision Indonesia**  
T +62-21-2933759  
Sales.Indonesia@hikvision.com

**Hikvision Colombia**  
sales.colombia@hikvision.com

## DS-2CD1057G0-L(UF) 5 MP ColorVu Fixed Bullet Network Camera

# ColorVu



Hikvision ColorVu technology provides 24/7 vivid colorful images with F1.0 advanced lenses and high performance sensors. F1.0 super-aperture collects more light to produce brighter images. Advanced sensor technology can vastly improve the utilization of available light.

- High quality imaging with 5 MP resolution
- 24/7 colorful imaging
- Excellent low-light performance
- Water and dust resistant (IP67)
- Efficient H.265+ compression technology



## ▪ Specification

Camera	
Image Sensor	1/2.7" Progressive Scan CMOS
Max. Resolution	2560 × 1920
Min. Illumination	Color: 0.001 Lux @ (F1.0, AGC ON), 0 Lux with light
Shutter Time	1/3 s to 1/100,000 s
Day & Night	24/7 color imaging
Angle Adjustment	Pan: 0° to 360°, tilt: 0° to 90°, rotate: 0° to 360°
Lens	
Lens Type	Fixed focal lens, 2.8 and 4 mm optional
Focal Length & FOV	2.8 mm, horizontal FOV 95°, vertical FOV 70°, diagonal FOV 125° 4 mm, horizontal FOV 76°, vertical FOV 57°, diagonal FOV 98°
Lens Mount	M12
Iris Type	Fixed
Aperture	F1.0
Depth of Field	2.8 mm: 2 m to ∞ 4 mm: 2.7 m to ∞
DORI	
DORI	2.8 mm, D: 64 m, O: 25 m, R: 12 m, I: 6 m 4 mm, D: 82 m, O: 32 m, R: 16 m, I: 8 m
Illuminator	
Supplement Light Type	White Light
Supplement Light Range	Up to 30 m
Smart Supplement Light	Yes
Video	
Main Stream	50 Hz: 20 fps (2560 × 1920) 25 fps (2560 × 1440, 1920 × 1080, 1280 × 720) 60 Hz: 20 fps (2560 × 1920) 30 fps (2560 × 1440, 1920 × 1080, 1280 × 720)
Sub-Stream	50 Hz: 25 fps (1280 × 720, 640 × 480, 640 × 360) 60 Hz: 30 fps (1280 × 720, 640 × 480, 640 × 360)
Video Compression	Main stream: H.265+/H.265/H.264+/H.264, Sub-stream: H.265/H.264/MJPEG
Video Bit Rate	32 Kbps to 16 Mbps
H.264 Type	Baseline Profile, Main Profile, High Profile
H.265 Type	Main Profile
Bit Rate Control	CBR
Region of Interest (ROI)	1 fixed region(s) for main stream
Audio	
Audio Type	-U: Mono sound
Environment Noise Filtering	-U: Yes
Audio Sampling Rate	-U: 8 kHz/16 kHz
Audio Compression	-U: G.711ulaw/G.711alaw/G.722.1/G.726/MP2L2/PCM/AAC-LC

Audio Bit Rate	-U: 64 Kbps (G.711 ulaw)/64 Kbps (G.711 alaw)/16 Kbps (G.722.1)/16 Kbps (G.726)/32 to 160 Kbps (MP2L2)/16 to 64 Kbps (AAC-LC)
<b>Network</b>	
Protocols	TCP/IP, ICMP, DHCP, DNS, DDNS, HTTP, HTTPS, RTP, RTSP, NTP, UPnP, IGMP, IPv6, UDP, QoS, Bonjour, FTP, 802.1x, SMTP
Simultaneous Live View	Up to 6 channels
API	Open Network Video Interface (Profile S, Profile G ((only -U model supports))), ISAPI, SDK
User/Host	Up to 32 users 3 user levels: administrator, operator, and user
Security	Password protection, complicated password, HTTPS encryption, 802.1X authentication (EAP-MD5), watermark, IP address filter, basic and digest authentication for HTTP/HTTPS, WSSE and digest authentication for Open Network Video Interface, RTP/RTSP over HTTPS, security audit log, TLS 1.2, host authentication (MAC address)
Client	iVMS-4200, Hik-Connect
Web Browser	Plug-in required live view: IE 10, IE 11, Local service: Chrome 57.0+, Firefox 52.0+
<b>Image</b>	
Wide Dynamic Range (WDR)	120 dB
SNR	≥ 52 dB
Day/Night Switch	Day, Night, Auto, Schedule
Image Enhancement	BLC, HLC, 3D DNR
Image Settings	Rotate mode, saturation, brightness, contrast, sharpness, gain, white balance, adjustable by client software or web browser
Privacy Mask	4 programmable polygon privacy masks
<b>Interface</b>	
Ethernet Interface	1 RJ45 10 M/100 M self-adaptive Ethernet port
On-Board Storage	-F: Built-in memory card slot, support MicroSD/SDHC/SDXC card, up to 256 GB
Built-in Microphone	-U: Yes
Reset Key	-F: Yes
<b>Event</b>	
Basic Event	Motion detection, video tampering alarm, exception
Linkage	Upload to FTP/memory card (-F), notify surveillance center, send email, trigger recording (-F), trigger capture
<b>General</b>	
Power	12 VDC ± 25%, 0.4 A, max. 5 W, Ø5.5 mm coaxial power plug, PoE: 802.3af, Class 3, 36 V to 57 V, 0.2 A to 0.15 A, max. 6.5 W
Material	Aluminum alloy body
Dimension	Ø76.6 mm × 164.4 mm (Ø3" × 6.5")
Package Dimension	234 mm × 120 mm × 117 mm (9.2" × 4.7" × 4.6")
Weight	Approx. 430 g (0.95 lb.)
With Package Weight	Approx. 648 g (1.42 lb.)
Storage Conditions	-30 °C to 60 °C (-22 °F to 140 °F). Humidity 95% or less (non-condensing)
Startup and Operating Conditions	-30 °C to 60 °C (-22 °F to 140 °F). Humidity 95% or less (non-condensing)

Language	English, Ukrainian
General Function	Heartbeat, anti-flicker, mirror, password protection, password reset via email
<b>Approval</b>	
EMC	FCC: 47 CFR Part 15, Subpart B, CE-EMC: EN 55032: 2015, EN 61000-3-2:2019, EN 61000-3-3: 2013+A1:2019, EN 50130-4: 2011 +A1: 2014, RCM: AS/NZS CISPR 32: 2015, KC: KN32: 2015, KN35: 2015
Safety	UL: UL 62368-1, CB: IEC 62368-1: 2014+A11, CE-LVD: EN 62368-1: 2014/A11: 2017, BIS: IS 13252 (Part 1): 2010/IEC 60950-1: 2005
Environment	CE-RoHS: 2011/65/EU, WEEE: 2012/19/EU, Reach: Regulation (EC) No 1907/2006
Protection	IP67: IEC 60529-2013

### ▪ Available Model

DS-2CD1057G0-L (2.8/4 mm)

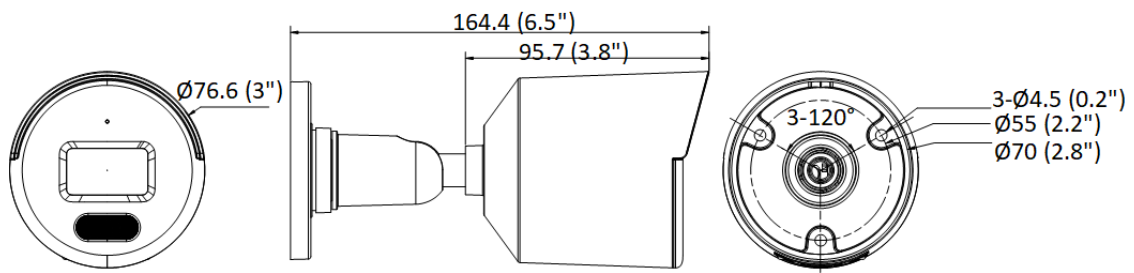
DS-2CD1057G0-LUF (2.8/4 mm)

### ▪ Typical Application

Hikvision products are classified into three levels according to their anti-corrosion performance. Refer to the following description to choose for your using environment.

This model has NO SPECIFIC PROTECTION.

Level	Description
Top-level protection	Hikvision products at this level are equipped for use in areas where professional anti-corrosion protection is a must. Typical application scenarios include coastlines, docks, chemical plants, and more.
Moderate protection	Hikvision products at this level are equipped for use in areas with moderate anti-corrosion demands. Typical application scenarios include coastal areas about 2 kilometers (1.24 miles) away from coastlines, as well as areas affected by acid rain.
No specific protection	Hikvision products at this level are equipped for use in areas where no specific anti-corrosion protection is needed.

**Dimension**

Unit: mm (inch)

**Accessory****Optional****DS-1280ZJ-XS****Junction Box**

Distributed by

**HIKVISION®****Headquarters**

No.555 Qianmo Road, Binjiang District,  
Hangzhou 310051, China  
T +86-571-8807-5998  
overseasbusiness@hikvision.com

**Hikvision USA**  
T +1-909-895-0400  
sales.usa@hikvision.com

**Hikvision Australia**  
T +61-2-8599-4233  
salesau@hikvision.com

**Hikvision India**  
T +91-22-28469900  
sales@pramahikvision.com

**Hikvision Canada**  
T +1-866-200-6690  
sales.canada@hikvision.com

**Hikvision Thailand**  
T +662-275-9949  
sales.thailand@hikvision.com

**Hikvision Europe**  
T +31-23-5542770  
sales.eu@hikvision.com

**Hikvision Italy**  
T +39-0438-6902  
info.it@hikvision.com

**Hikvision Brazil**  
T +55 11 3318-0050  
Latam.support@hikvision.com

**Hikvision Turkey**  
T +90 (216)521 7070- 7074  
sales.tr@hikvision.com

**Hikvision Malaysia**  
T +601-7652-2413  
sales.my@hikvision.com

**Hikvision UK & Ireland**  
T +01628-902140  
sales.uk@hikvision.com

**Hikvision South Africa**  
Tel: +27 (10) 0351172  
sale.africa@hikvision.com

**Hikvision France**  
T +33(0)1-85-330-450  
info.fr@hikvision.com

**Hikvision Kazakhstan**  
T +7-727-9730667  
nikia.panfilov@hikvision.ru

**Hikvision Vietnam**  
T +84-974270888  
sales.vt@hikvision.com

**Hikvision UAE**  
T +971-4-4432090  
salesme@hikvision.com

**Hikvision Singapore**  
T +65-6684-4718  
sg@hikvision.com

**Hikvision Spain**  
T +34-91-737-16-55  
info.es@hikvision.com

**Hikvision Tashkent**  
T +99-87-1238-9438  
uzb@hikvision.ru

**Hikvision Hong Kong**  
T +852-2151-1761  
info.hk@hikvision.com

**Hikvision Russia**  
T +7-495-669-67-99  
saleru@hikvision.com

**Hikvision Korea**  
T +82-(0)31-731-8817  
sales.korea@hikvision.com

**Hikvision Poland**  
T +48-22-460-01-50  
info.pl@hikvision.com

**Hikvision Indonesia**  
T +62-21-2933759  
Sales.Indonesia@hikvision.com

**Hikvision Colombia**  
sales.colombia@hikvision.com



## DS-2CD1357G0-L(UF) 5 MP ColorVu Fixed Turret Network Camera

# ColorVu



Hikvision ColorVu technology provides 24/7 vivid colorful images with F1.0 advanced lenses and high performance sensors. F1.0 super-aperture collects more light to produce brighter images. Advanced sensor technology can vastly improve the utilization of available light.

- High quality imaging with 5 MP resolution
- 24/7 colorful imaging
- Excellent low-light performance
- Water and dust resistant (IP67)
- Efficient H.265+ compression technology



## ▪ Specification

Camera	
Image Sensor	1/2.7" Progressive Scan CMOS
Max. Resolution	2560 × 1920
Shutter Time	1/3 s to 1/100,000 s
Min. Illumination	Color: 0.001 Lux @ (F1.0, AGC ON), 0 Lux with light
Day & Night	24/7 color imaging
Angle Adjustment	Pan: 0° to 360°, tilt: 0° to 75°, rotate: 0° to 360°
Lens	
Lens Type	Fixed focal lens, 2.8 and 4 mm optional
Focal Length & FOV	2.8 mm, horizontal FOV 95°, vertical FOV 70°, diagonal FOV 125° 4 mm, horizontal FOV 76°, vertical FOV 57°, diagonal FOV 98°
Lens Mount	M12
Iris Type	Fixed
Aperture	F1.0
Depth of Field	2.8 mm: 2 m to ∞ 4 mm: 2.7 m to ∞
DORI	
DORI	2.8 mm, D: 64 m, O: 25 m, R: 12 m, I: 6 m 4 mm, D: 82 m, O: 32 m, R: 16 m, I: 8 m
Illuminator	
Supplement Light Type	White Light
Supplement Light Range	Up to 30 m
Smart Supplement Light	Yes
Video	
Main Stream	50 Hz: 20 fps (2560 × 1920) 25 fps (2560 × 1440, 1920 × 1080, 1280 × 720) 60 Hz: 20 fps (2560 × 1920) 30 fps (2560 × 1440, 1920 × 1080, 1280 × 720)
Sub-Stream	50 Hz: 25 fps (1280 × 720, 640 × 480, 640 × 360) 60 Hz: 30 fps (1280 × 720, 640 × 480, 640 × 360)
Video Compression	Main stream: H.265+/H.265/H.264+/H.264, Sub-stream: H.265/H.264/MJPEG
Video Bit Rate	32 Kbps to 16 Mbps
H.264 Type	Baseline Profile, Main Profile, High Profile
H.265 Type	Main Profile
Bit Rate Control	CBR, VBR
Region of Interest (ROI)	1 fixed region(s) for main stream
Audio	
Audio Type	-U: Mono sound
Environment Noise Filtering	-U: Yes
Audio Sampling Rate	-U: 8 kHz/16 kHz
Audio Compression	-U: G.711ulaw/G.711alaw/G.722.1/G.726/MP2L2/PCM/AAC-LC

Audio Bit Rate	-U: 64 Kbps (G.711 ulaw)/64 Kbps (G.711 alaw)/16 Kbps (G.722.1)/16 Kbps (G.726)/32 to 160 Kbps (MP2L2)/16 to 64 Kbps (AAC-LC)
<b>Network</b>	
Protocols	TCP/IP, ICMP, DHCP, DNS, DDNS, HTTP, HTTPS, RTP, RTSP, NTP, UPnP, IGMP, IPv6, UDP, QoS, Bonjour, FTP, 802.1x, SMTP
Simultaneous Live View	Up to 6 channels
API	Open Network Video Interface (Profile S, Profile G ((only -U model supports))), ISAPI, SDK
User/Host	Up to 32 users 3 user levels: administrator, operator, and user
Security	Password protection, complicated password, HTTPS encryption, 802.1X authentication (EAP-MD5), watermark, IP address filter, basic and digest authentication for HTTP/HTTPS, WSSE and digest authentication for Open Network Video Interface, RTP/RTSP over HTTPS, security audit log, TLS 1.2, host authentication (MAC address)
Client	iVMS-4200, Hik-Connect
Web Browser	Plug-in required live view: IE 10, IE 11, Local service: Chrome 57.0+, Firefox 52.0+
<b>Image</b>	
Wide Dynamic Range (WDR)	120 dB
SNR	≥ 52 dB
Day/Night Switch	Day, Night, Auto, Schedule
Image Enhancement	BLC, HLC, 3D DNR
Image Settings	Rotate mode, saturation, brightness, contrast, sharpness, gain, white balance, adjustable by client software or web browser
Privacy Mask	4 programmable polygon privacy masks
<b>Interface</b>	
Ethernet Interface	1 RJ45 10 M/100 M self-adaptive Ethernet port
On-Board Storage	-F: Built-in memory card slot, support MicroSD/SDHC/SDXC card, up to 256 GB
Built-in Microphone	-U: Yes
Reset Key	-F: Yes
<b>Event</b>	
Basic Event	Motion detection, video tampering alarm, exception
Linkage	Upload to FTP/memory card (-F), notify surveillance center, send email, trigger recording (-F), trigger capture
<b>General</b>	
Power	12 VDC ± 25%, 0.4 A, max. 5 W, Ø5.5 mm coaxial power plug, PoE: 802.3af, Class 3, 36 V to 57 V, 0.2 A to 0.15 A, max. 6.5 W
Material	Metal & Plastic
Dimension	Ø109.9 mm × 103.6 mm (Ø4.3" × 4.1")
Package Dimension	150 mm × 150 mm × 141 mm (5.9" × 5.9" × 5.6")
Weight	-L: Approx. 390 g (0.9 lb) -LUF: Approx. 410 g (0.9 lb)
With Package Weight	-L: Approx. 630 g (1.4 lb) -LUF: Approx. 650 g (1.4 lb)
Storage Conditions	-30 °C to 60 °C (-22 °F to 140 °F). Humidity 95% or less (non-condensing)

Startup and Operating Conditions	-30 °C to 60 °C (-22 °F to 140 °F). Humidity 95% or less (non-condensing)
Language	English, Ukrainian
General Function	Heartbeat, anti-flicker, mirror, password protection, password reset via email
<b>Approval</b>	
EMC	FCC: 47 CFR Part 15, Subpart B, CE-EMC: EN 55032: 2015, EN 61000-3-2:2019, EN 61000-3-3: 2013+A1:2019, EN 50130-4: 2011 +A1: 2014, RCM: AS/NZS CISPR 32: 2015, KC: KN32: 2015, KN35: 2015
Safety	UL: UL 62368-1, CB: IEC 62368-1: 2014+A11, CE-LVD: EN 62368-1: 2014/A11: 2017, BIS: IS 13252 (Part 1): 2010/IEC 60950-1: 2005
Environment	CE-RoHS: 2011/65/EU, WEEE: 2012/19/EU, Reach: Regulation (EC) No 1907/2006
Protection	IP67: IEC 60529-2013

#### ▪ Available Model

DS-2CD1357G0-L (2.8/4 mm)

DS-2CD1357G0-LU F(2.8/4 mm)

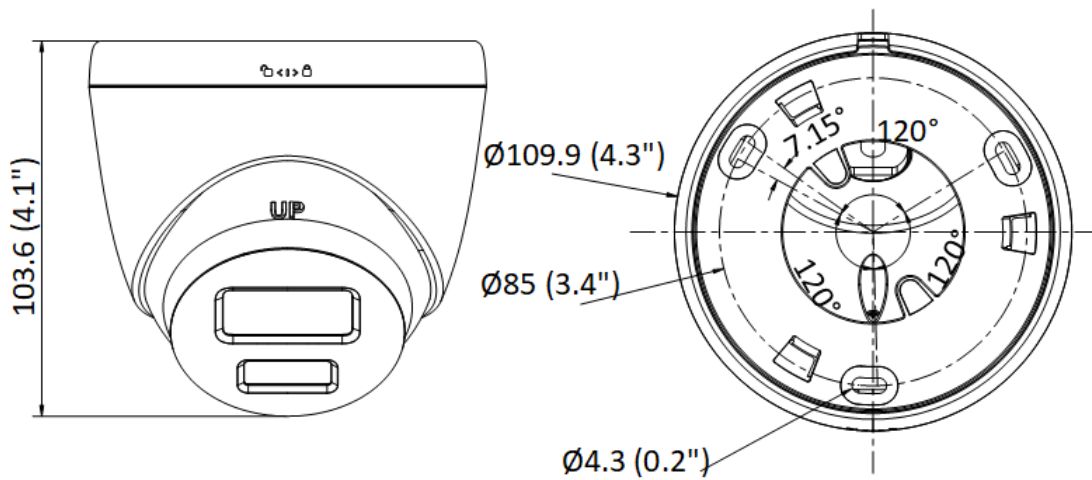
#### ▪ Typical Application

Hikvision products are classified into three levels according to their anti-corrosion performance. Refer to the following description to choose for your using environment.

This model has NO SPECIFIC PROTECTION.

Level	Description
Top-level protection	Hikvision products at this level are equipped for use in areas where professional anti-corrosion protection is a must. Typical application scenarios include coastlines, docks, chemical plants, and more.
Moderate protection	Hikvision products at this level are equipped for use in areas with moderate anti-corrosion demands. Typical application scenarios include coastal areas about 2 kilometers (1.24 miles) away from coastlines, as well as areas affected by acid rain.
No specific protection	Hikvision products at this level are equipped for use in areas where no specific anti-corrosion protection is needed.






▪ **Dimension**



Unit: mm (inch)

▪ **Accessory**

▪ **Optional**

DS-1275ZJ-SUS Vertical Pole Mount	DS-1272ZJ-110-TRS Wall Mount	DS-1276ZJ-SUS Corner Mount	DS-1280ZJ-S Junction Box	DS-1281ZJ-S Inclined Ceiling Mount
				

Distributed by

**HIKVISION®****Headquarters**

No.555 Qianmo Road, Binjiang District,  
Hangzhou 310051, China  
T +86-571-8807-5998  
overseasbusiness@hikvision.com

**Hikvision USA**  
T +1-909-895-0400  
sales.usa@hikvision.com

**Hikvision Australia**  
T +61-2-8599-4233  
salesau@hikvision.com

**Hikvision India**  
T +91-22-28469900  
sales@pramahikvision.com

**Hikvision Canada**  
T +1-866-200-6690  
sales.canada@hikvision.com

**Hikvision Thailand**  
T +662-275-9949  
sales.thailand@hikvision.com

**Hikvision Europe**  
T +31-23-5542770  
sales.eu@hikvision.com

**Hikvision Italy**  
T +39-0438-6902  
info.it@hikvision.com

**Hikvision Brazil**  
T +55 11 3318-0050  
Latam.support@hikvision.com

**Hikvision Turkey**  
T +90 (216)521 7070- 7074  
sales.tr@hikvision.com

**Hikvision Malaysia**  
T +601-7652-2413  
sales.my@hikvision.com

**Hikvision UK & Ireland**  
T +01628-902140  
sales.uk@hikvision.com

**Hikvision South Africa**  
Tel: +27 (10) 0351172  
sale.africa@hikvision.com

**Hikvision France**  
T +33(0)1-85-330-450  
info.fr@hikvision.com

**Hikvision Kazakhstan**  
T +7-727-9730667  
nikia.panfilov@hikvision.ru

**Hikvision Vietnam**  
T +84-974270888  
sales.vt@hikvision.com

**Hikvision UAE**  
T +971-4-4432090  
salesme@hikvision.com

**Hikvision Singapore**  
T +65-6684-4718  
sg@hikvision.com

**Hikvision Spain**  
T +34-91-737-16-55  
info.es@hikvision.com

**Hikvision Tashkent**  
T +99-87-1238-9438  
uzb@hikvision.ru

**Hikvision Hong Kong**  
T +852-2151-1761  
info.hk@hikvision.com

**Hikvision Russia**  
T +7-495-669-67-99  
saleru@hikvision.com

**Hikvision Korea**  
T +82-(0)31-731-8817  
sales.korea@hikvision.com

**Hikvision Poland**  
T +48-22-460-01-50  
info.pl@hikvision.com

**Hikvision Indonesia**  
T +62-21-2933759  
Sales.Indonesia@hikvision.com

**Hikvision Colombia**  
sales.colombia@hikvision.com

### Overview:

The HDMI 4x4 Matrix, 4K/60 (4:4:4) connects four HDMI sources to four displays. This matrix provides four HDMI outputs supporting up to 4K/60 (4:4:4) plus all 3D formats, and supporting independent EDID control. It works with Blu-Ray players, Media Players/Streamers, Cameras, Set-Top boxes, Home Theater systems, and game consoles that connect to an HDMI display. Any source is accessible at all times by any display by selecting it via the supplied IR Remote Control, RS-232, TCP/IP or by using the selection buttons on the front panel.

### Applications:

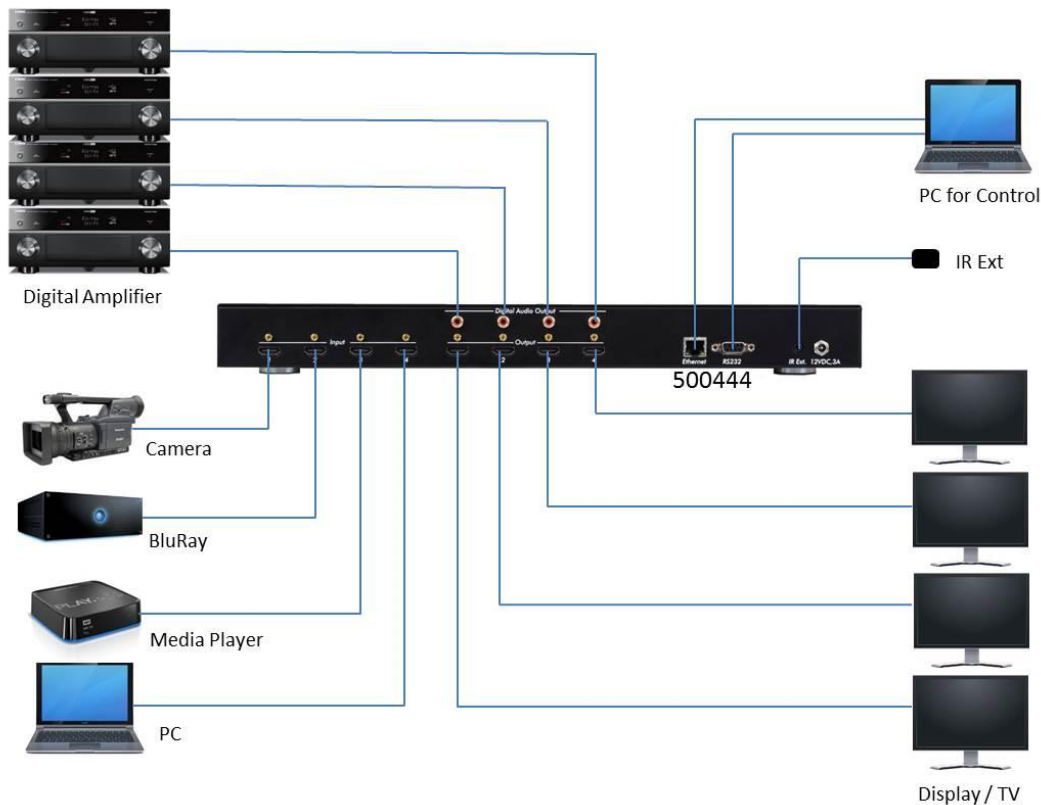
- Commercial and residential AV systems
- Classroom training systems
- Digital signage
- Boardroom systems
- Collaborative PC systems
- Medical information systems



### Key Features:

- Supports HDMI 2.0 (4K/60, 4:4:4)
- Supports 4K/60 (4:2:0) for compatibility with HDBT extenders
- HDCP 2.2 compliant
- Full HDR support
- Powerful EDID management
- Supports LPCM 7.1CH, Dolby TrueHD, Dolby Digital Plus, Dolby Atmos, DTS-HD Master Audio & DTS:X
- Supports a Coax digital audio out (S/PDIF)
- Available Windows GUI control software
- Controllable via front panel, IR, RS232 and Telnet
- Fits on a standard 19" rack

### Typical Application





Specifications	
<b>Environment</b>	HDMI 2.0a
<b>Devices</b>	4K Blu-Ray, media players/streamers, projectors, monitors, TV, PC, laptops.
<b>Transmission</b>	Transparent to the user.
<b>Video Bandwidth</b>	18Gbps
<b>Maximum Pixel Clock</b>	594Mhz
<b>Signals</b>	HDMI 2.0a (4K/60 4:4:4) protocol and HDCP 1.4 & 2.2
<b>Video Resolution</b>	VESA and SMPTE 480p to 2160p (4K) With 3D Bit depth: 8, 10, 12
<b>Connectors</b>	Four (4) HDMI connectors, for HDMI Input Four (4) HDMI connectors, for HDMI Output One (1) 3.5mm Jack, for IR Sensor One (1) DB9 connector for RS232 management One (1) RJ45 Shielded connector for Ethernet Four (4) Coax Digital Audio Outputs One (1) 2.1mm barrel locking connector for Power
<b>Audio</b>	Supports LPCM 7.1CH, Dolby TrueHD, Dolby Digital Plus, Dolby Atmos, DTS-HD Master Audio & DTS:X
<b>Cable</b>	Eight (8) HDMI cables of appropriate length for video resolution selected Cat 5e/6 or better twisted pair cable for Ethernet One DB9 serial cable for RS232
<b>Maximum Distance</b>	10m for HDMI cable <i>Cables not included.</i>
<b>Power Supply</b>	One (1) 110-240VAC to 12VDC/5.0A power supply
<b>Temperature</b>	Operating: 0° to 40°C      Storage: -20° to 85°C Humidity: Up to 95% non-condensing
<b>Enclosure</b>	Metal enclosure
<b>Bracket</b>	Included
<b>Dimensions</b>	17.20" x 1.69" x 8.86" (437mm x 43mm x 225mm)
<b>Weight</b>	9.69lbs (4.40kg)
<b>Compliance</b>	Regulatory: FCC, CE, RoHS
<b>Warranty</b>	2 years
<b>Order Information</b>	500444-US HDMI 4x4 Matrix Switch, 4K/60, US (UPC: 627699014448) 500444-UK HDMI 4x4 Matrix Switch, 4K/60, UK (UPC: 627699914441) 500444-EU HDMI 4x4 Matrix Switch, 4K/60, EU (UPC: 627699814444)

**MuxLab Inc.**

8495 Dalton Road, Mount Royal, Quebec, Canada, H4T 1V5

Tel: (514) 905 0588 Fax: (514) 905 0589

Toll Free: 1 877 689-5228

E-mail: [videoease@muxlab.com](mailto:videoease@muxlab.com)

[www.muxlab.com](http://www.muxlab.com)



## DS-K1T341CM Face Recognition Terminal



Face recognition terminal adopts deep learning algorithm, which helps to recognize the face faster with higher accuracy. It also supports multiple authentication modes: face/card/PIN authentication, etc. It can be applied in multiple scenarios, such as buildings, enterprises, financial industries, and other important areas.

- Deep learning algorithm
- 4.3-inch capacitive touch screen, 2 MP wide-angle dual-lens
- 3,000 face capacity, 3,000 card capacity, and 150,000 event capacity
- Multiple authentication modes, including face, and card, etc.
- Face recognition duration < 0.2 s/User
- Supports mask wearing detection
- Connects to external access controller or Wiegand card reader via Wiegand protocol
- Connects to secure door control unit via RS-485 protocol to avoid the door opening when the terminal is destroyed
- Two-way audio with client software, door station, indoor station, and main station

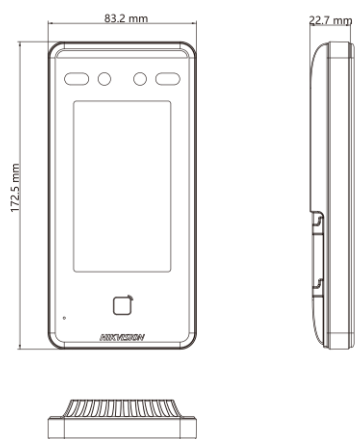
## ▪ Specification

System	
Operating system	Linux
Display	
Screen size	4.3 inch
Operation method	Capacitive touch screen
Resolution	272 × 480
Video	
Lens	2
Resolution	2 MP (video stream: 720P)
Video standard	PAL (Default) and NTSC
Network	
Wired network	10 M/100 M self-adaptive
Interface	
Network interface	1
Lock control	1
Exit button	1
Door contact input	1
TAMPER	1
RS-485	1
Wiegand	1
USB	1
Capacity	
Face capacity	3,000
Card capacity	3,000
Event capacity	150,000
Authentication	
Face recognition distance	> 2 m
Face recognition duration	< 0.2 s
Card type	M1 card
Function	
Live view	Support
Face anti-spoofing	Support
Hik-Connect	Support
Audio prompt	Support
General	
Built-in access controller	Yes
Power supply	12 VDC to 24 VDC, 2 A
Power consumption	≤ 10 W
Working temperature	-30 °C to 60 °C (-22 °F to 140 °F)
Protective level	IP65
Language	English, Spanish (South America), Arabic, Thai, Indonesian, Russian, Vietnamese, Portuguese (Brazil), Korean

▪ **Available Model**

DS-K1T341CM

▪ **Dimension**



**Headquarters**

No.555 Qianmo Road, Binjiang District,  
Hangzhou 310051, China  
T +86-571-8807-5998  
www.hikvision.com

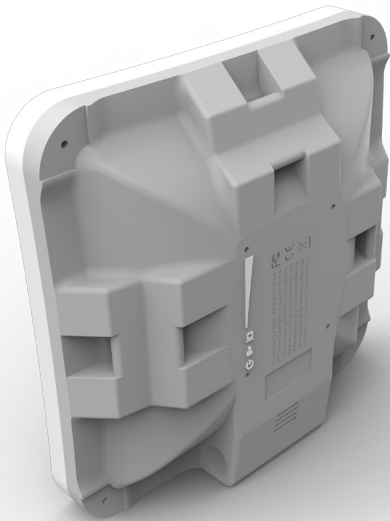


Follow us on social media to get the latest product and solution information.



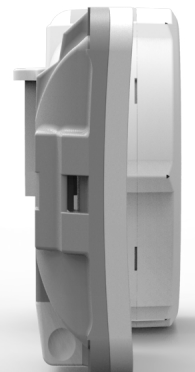
## SXTsq Lite5

The SXTsq Lite5 is a compact and lightweight outdoor wireless device with an integrated antenna. Perfect for point-to-point links of up to 12 kilometers or as a CPE unit. It is compact, weatherproof and easy to mount. The SXTsq Lite5 retains a 16 dBi antenna like the SXT Lite5, our previous model, yet the antenna design has been improved and the physical size has been dramatically reduced - the SXTsq is two times thinner.



The enclosure includes slots for directly attaching a hose clamp mount in three different mounting places, with ability to be mounted on horizontal railings. The device includes one 10/100 Mbit ethernet port. There is also an easily accessible grounding connection to protect it against lightning.

### Comparison to previous SXTs



24 V 0.38 A power adapter



Metal ring



PoE injector

## Specifications

Product code	RBSXTsq5nD (International), RBSXTsq5nD-US (USA)	
CPU	AR9344	
CPU nominal frequency	600 MHz	
CPU core count	1	
Size of RAM	64 MB	
Storage	16 MB Flash	
10/100 Ethernet ports	1	
Wireless bands	5 GHz radio	
Wireless regulations	Specific frequency range may be limited by country regulations	
Operating frequency	International	5150 - 5875 MHz
	USA	5170 - 5250 MHz 5725 - 5835 MHz
Protocols	802.11a/n	
Chains	2	
Antenna gain	16 dBi	
Antenna beam width	23°	
Wireless chip model	AR9344	
PoE in	Yes	
Supported input voltage	10 V - 30 V, passive PoE	
Dimensions	129x129x34 mm; package: 255x180x45 mm	
Weight	Unit: 295 g; package: 492 g	
Operating temperature	-40 to 70° C	
License level	3	
Operating System	RouterOS	
Max Power consumption	6 W	

## Wireless specifications

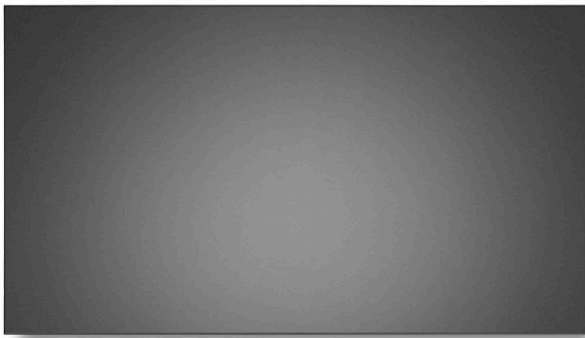
RATE (5 GHz)	Tx (dBm)	Rx (dBm)
6MBit/s	25	-96
54MBit/s	20	-80
MCS0	25	-96
MCS7	19	-75

QuickMount Pro adjustable mount available separately.



NEC MultiSync® UN552V  
LCD 55" Video Wall Display

## Datasheet



### Video Walls you can rely on

The MultiSync® UN552V sets the standard for video wall technology. Featuring a minimal 3.5 mm bezel these display modules create impressive high resolution video walls with barely visible image gaps. With perfect picture quality and high product reliability, these displays are designed for the rigors of 24/7 operation. At a high brightness level of 500 cd/m<sup>2</sup> your message will be well received with effortless readability even in the brightest ambient light conditions. An advanced set of intelligent features make the displays easy to install and operate and support significantly reduced maintenance requirements. The 55" display is ideally suited to create huge screen surfaces for fixed installations and for mid and longer viewing distances.

NEC's vast experience in the video wall market is evident in the design with features that reduce costs, ease installation and enhance the visual impact of content in control rooms, broadcast studios, transport installations and the rental market.

## Benefits

**Easy installation** – effortlessly set up your wall display with Auto TileMatrix and out-of-the-box calibrations. Save time by plugging in ready-to-use image presets for predefined application scenarios.

**Enhanced imaging performance** – advanced settings of all relevant visual parameters allow full control of brightness, colour, gamma and uniformity via the SpectraView Engine for precise, natural images.

**Lifelike and consistent colour** – expect colour reproduction that feels true to life with IPS panel technology, the top choice when it comes to colour consistency. The S-IPS panel ensures that perfect visibility is maintained in landscape and portrait mode and at extreme viewing angles as viewers pass by.

**Secure Reliability and Longevity of Video Walls** – unique NEC heat management system enables the user to monitor and control the heat inside the display.

**Cost Saving Device Management** – save effort whilst managing all connected NEC devices from a centralised location by using the NaViSet Administrator 2 software tool.

## Product Information

Product Name	NEC MultiSync® UN552V
Product Group	LCD 55" Video Wall Display
Order Code	60004882

## Display

Panel Technology	S-IPS with Direct LED backlights
Active Screen Area (W x H) [mm]	1,209.6 x 680.3
Screen Size [inch/cm]	55 / 138.8
Aspect Ratio	16:9
Pixel Pitch [mm]	0.630
Brightness [cd/m²]	500
Contrast Ratio (default)	> 1700:1
Viewing Angle [°]	178 horizontal / 178 vertical (typ. at contrast ratio 10:1)
Colour Gamut	72% of NTSC
Response Time (typ.) [ms]	8
Panel Refresh Rate [Hz]	60
Haze Level [%]	Pro (28)
Supported Orientation	Landscape; Portrait

## Resolution

Native Resolution	1920 x 1080			
Supported on DisplayPort and HDMI	1024 x 768; 1080i; 1080p;	1280 x 1024; 1280 x 768; 1360 x 768;	1600 x 1200; 1920 x 1080; 3840 x 2160;	640 x 480; 720p (50/60 Hz); 800 x 600
Supported on HDMI only	4096 x 2160			

## Synchronisation Rate

Horizontal Frequency [kHz]	26 - 134
Vertical Frequency [Hz]	23 - 86

## Connectivity

Input Video Analogue	1 x VGA; Composite (RCA)
Input Video Digital	1 x DVI-D (with HDCP); 1 x OPS Slot; 2 x DisplayPort (with HDCP); 2 x HDMI 1.3 (with HDCP)
Input Audio Analogue	2 x 3,5 mm jack
Input Audio Digital	2 x DisplayPort; 2 x HDMI
Input Control	1 x Remote Control (3.5 mm jack); 1 x RS232; 2 x LAN 100Mbit
Input Data	1 x microSD (MediaPlayer); 1 x USB 1.0 (Downstream); 1 x USB 1.0 (MediaPlayer); 1 x USB 2.0 (Upstream); 2 x USB 1.0 (Compute Module, 1 x 5V/2A powered)
Output Video Digital	1 x DisplayPort (loop through: DisplayPort, OPS slot-in PC); 1 x HDMI (loop through: HDMI, OPS slot-in PC, MediaPlayer)
Output Audio Analogue	1 x 3,5 mm jack
Output Control	LAN 100Mbit

## Calibration

Factory Calibration	Gamma; Intensity; RGB; Uniformity; White Point
Sensor Calibration (through USB)	PC-less Calibration with USB Sensor MDSVSensor3; White Copy (post self-calibration)



Calibration with Software	Corner Uniformity; Gamma; Intensity; RGB; Update Factory Calibration; Update Uniformity Correction; White Point
---------------------------	---

Calibration Software	NEC Display Wall Calibrator
----------------------	-----------------------------

## Open Modular Intelligence

OPS Slot	Slot Technology: Open pluggable specification (NEC / Intel OPS standard)
----------	--

OPS Max. Current / Power Consumption [A / W]	3.6 / 58
--	----------

Compute Module Slot	Slot Technology: Compute Module 3 Slot (NEC proprietary standard)
---------------------	---

## Sensors

Human Sensor	Optional, external, 4-5m range, triggered actions programmable
--------------	--

NFC Sensor	Integrated, 2cm range, free NEC Android App required
------------	--

## Electrical

Power Consumption Eco/max. [W]	110 shipping; 315 (max.)
--------------------------------	--------------------------

Power Savings Mode [W]	< 0.5; < 2 (Networked Standby)
------------------------	--------------------------------

## Environmental Conditions

Operating Temperature [°C]	+0 to +40
----------------------------	-----------

Operating Humidity [%]	20 to 80
------------------------	----------

Storage Humidity [%]	10 to 90
----------------------	----------

Storage Temperature [°C]	-20 to 60
--------------------------	-----------

## Mechanical

Dimensions (W x H x D) [mm]	Without stand: 1,213.4 x 684.2 x 103.8
-----------------------------	--

Weight [kg]	Without stand: 25.5
-------------	---------------------

Bezel Width [mm]	1.2 bottom/right; 2.3 top/left; 3.5
------------------	-------------------------------------

VESA Mounting [mm]	4 holes; 400 x 400 (FDMI); M6
--------------------	-------------------------------

## MediaPlayer

Supported Image Formats	JPG (baseline, progressive, RGB, CMYK); max. resolution 5000 x 5000; PNG (interlace, alpha channel); max. resolution 4000 x 4000
-------------------------	--

Supported Video Formats	MP4 / MOV / FLV (video H.264, audio MP3, AAC); max. resolution 1080p at 30 Hz, 1080i at 60 Hz; MPG (video mpeg1/2, audio mpeg audio layer2/3, AAC-LC); MP @ ML, MP @ HL; WMV (video H.264, wmv advanced L3, wmv simple / main, audio mp3 wmv std); max. resolution 1080p at 30 Hz, 1080i at 60 Hz
-------------------------	---

Supported Audio Formats	MP3 (MP3); max. bit-rate 320 kBit/s; WAV (LPCM); max. 48 kHz sampling
-------------------------	---

## Available Options

Accessories	Calibration kit (KT-LFD-CC2); Feet (ST-5220); Overframe kit (KT-55UN-OF5); Remote control kit (KT-RC3); Speaker (SP-TF1); Wall mount (PD02VWM MFS 46-55 L/P; PD02VW QR 46-55 L/P; CK02XUN MFS 55 L/P)
-------------	---

Compute Module Slot	Raspberry Pi Compute Module 1 and 3
---------------------	-------------------------------------

OPS Slot	Intel® Atom, Celeron and Core i3, i5, i7 Slot-in PCs
----------	--

## Green Features

Energy Efficiency	Carbon savings meter; Energy consumption: 106 kWh/1000 h; Energy efficiency class: G; Human Sensor; LED backlight
-------------------	---

Ecological Standards	EnergyStar 8.0
----------------------	----------------

## Additional Features

Special Characteristics	Auto ID assignment; Auto tiling function; Automatic Alarm E-Mails; DICOM Simulation; Frame Comp; HTTP Server; Image flip; Intelligent Wireless Data (based on NFC); NaViSet Administrator 2; TileMatrix; USB Media Player; User input priority definition; User readable log function
Colour Versions	Black Front Bezel, Black Back Cabinet
Safety and Ergonomics	BSMI; CE; EAC; FCC; PSB; RCM; REACH; RoHS; SASO; TÜV GS; TÜV S; UL/C-UL; VCCI
Pixel Failure Class	ISO 9241-307, Class 2
Audio	Optional Speakers (15 W + 15 W)
Plug and Play	VESA DDC/CI
Shipping Content	Display; DisplayPort Cable; HDMI Cable; LAN cable (RJ45); Power Cable
Warranty	3 years warranty incl. backlight; additional services available; optional 4. + 5. year warranty extension <sup>1</sup>
Operating Hours	24/7

<sup>1</sup> please refer to terms and conditions of warranty extensions



VCCI



CE



RCM



RoHS



TÜV GS

This document is © 2023 Sharp NEC Display Solutions Europe GmbH.

All rights reserved in favour of their respective owners. All hardware and software names are brand names and/or registered trademarks of the respective manufacturers. All specifications are subject to change without notice. Errors and omissions are excepted. 31.08.2023

# Daker DK Plus 3000

3 101 72 – 3 100 75



## TABLE OF CONTENTS Page

1. General features.....	1
2. Technical features .....	1

### 1. GENERAL FEATURES

The Legrand UPS model Daker DK Plus 3000 is an uninterruptible power source with high frequency PWM technology, Double Conversion On-Line, solid neutral, Rated Power 3,000 VA – 2700 W, equipped with valve-regulated, hermetically-sealed accumulator batteries, contained in a specific compartment inside the UPS or in one or more external cabinets, sized to guarantee a minimum uptime of 8 minutes at 80% of the load. The electronics and batteries are contained in just two rack units.

The architecture of this UPS means it can be installed in either a Tower configuration or inside Rack cabinets.

The rectifier of the UPS is comprised of a control and regulating circuit (PFC), which, in addition to normal rectifier functions also:

- automatically corrects the power factor of the load to restore it to a value of > 0.99 with a load applied at the output at 20% of the rated load;
- power the inverter without requiring energy from the batteries, even when there is very low voltage from the mains;
- ensures a total harmonic distortion of the input current  $THD_{in} < 3\%$  without the addition of filters or supplementary parts.

The bypass circuit is designed and built in compliance with the following:

- Electromechanical switch
- Command and control logic managed by a microprocessor that:
  - automatically transfers the load directly onto the primary mains line without interrupting the power supply if any conditions of overload, over temperature, continuous voltage outside of the tolerances and inverter anomaly arise;
  - automatically re-transfers the primary mains line load to an inverter line, without interrupting the power supply, once normal conditions of the load have been restored;
  - if the primary mains line and the inverter are not synchronized, the bypass must be disabled.

A diagnostic and shutdown software (UPS Communicator), if accordingly installed in a PC connected to the UPS, which allows you to access all of the DHEA's operational data, make adjustments and settings to the special functions and control Windows and Linux operating system shutdown.

An optional software (UPS management software) offers hierarchic multiserver shutdown and remote management of the UPS for any operating system in a heterogeneous network (Windows, Novell, Linux and the common Unix).

Daker DK Plus 3000 is managed by a microprocessor and is able to display, on a control panel and LCD screen, the alarms and operating modes described below:

- normal operation
- output frequency that is not synchronized with the input
- battery-powered operation
- operation in bypass mode
- faulty power module
- overloaded
- generic anomaly
- incorrect neutral connection
- back-up time
- end of uptime

The Daker DK Plus 3000 Static Uninterruptible Power Supply bears the CE marking pursuant to Directives 2014/35, 2104/30, and is designed and built in compliance with the following standards:

- EN 62040-1 "General and safety requirements for UPSs used in areas that are accessible to the operator"
- EN 62040-2 "Electromagnetic Compatibility requirements (EMC)"
- EN 62040-3 "Performance and test method requirements".

### 2. TECHNICAL FEATURES

General Features	
Nominal power (VA)	3000
Active power (W)	2700
Technology	On-Line Double Conversion VFI-SS-111
Waveform	Sinusoidal
UPS architecture	convertible tower and rack 19
Surge Rating	1530
ECO Mode efficiency	%98

Input	
Input voltage	230 V
Input frequency	50-60 Hz $\pm 5\%$ Autosensing
Input Voltage Range	180-300 on full load 150-300 on 80%load 110-300 on 60% load
THD Input current	< 3%
Input power factor	> 0.99
Input Plug	3 101 72: Multi Standard 3 100 75: British Standard

Output	
Output voltage	230V $\pm 1\%$
Output frequency (nominal)	50/60 Hz (can be set from the LCD panel) $\pm 0.1\%$
Crest Factor	1:3
THD Output voltage	Linear load 2% Nonlinear load 5%
Output Voltage Tolerance	$\pm 1\%$
Bypass	Internal automatic Bypass (included) External maintenance Bypass (OPTIONAL)

## 2. TECHNICAL FEATURES *(continued)*

Batteries	
Uptime Expansion	yes
Number of batteries	6
Battery series Type/Voltage	12V 9Ah
Uptime with 80% load (min)	8
Recharge time (to 100%)	4 hours
Battery disconnecter for safe transportation	yes

Communication and management	
Display and Signals	Four buttons and four LEDs to monitor the status of the UPS in real time
Communication Ports	RS232 serial ports, USB
Remote Management	available
Network interface slot	SNMP

Mechanical features	
Measurements H x L x D (mm)	440x88 (2U) x600
Battery Cabinet Measurements H x L x D (mm)	440x88 (2U) x600
Net Weight (kg)	30

Environmental conditions	
Operating temperature (°C)	0 ÷ 40 °C
Degree of protection	IP20
Relative humidity (%)	0-95% non-condensing
Noise level at 1 m (dBA)	On-Line Mode < 50 Eco Mode < 40
Heat Loss (BTU/h)	818

Certifications	
Standards	EN 62040-1, EN 62040-2, EN 62040-3