

GUIDE WIRES

THE RELIABLE CHOICE FOR ERCP

All guide wires are manufactured out of bending-resistant and torsion-proof Nitinol. Their hydrophilic coated tips, allow the wires to safely find their way even into areas and stenoses which are hard to reach. This is supported by the wire's high rigidity and controllability. Hence the guide

wires are not only meant for sophisticated stent placements, but are also perfectly suited for ERCP. The high radiopacity of the flexible hydrophilic tip facilitates exact stent placement under visual radiological control.

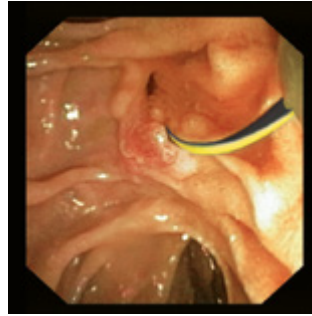
SPECIFIC CHARACTERISTICS

- Non-kinking nitinol wire
- High level of rigidity and guidability
- Hydrophilic, atraumatic tip
- Working length: 4500 mm
- High level of radiopacity



SUCCESSFUL IN PRACTICAL ROUTINE WORK

Bending resistance and rigidity account for the very good feeding properties of guide wires. In daily applications they convince by their precision, which is primarily guaranteed by the efficient transmission of the rotatory and translatory motion all the way to the tip of the wire, as applied by the surgical assistant. This makes it possible to reach into even anatomically difficult passages with ease. In addition, the tip of each wire can be perfectly seen in the X-ray control image, allowing for optimal stent positioning.



Endoscopic view



X-ray

DISPENSER FOR EASY OPERATION

The wire can be easily ejected and retracted by means of this innovative dispenser. Owing to its compact design, the dispenser is handy and easy to operate. Rinsing the wire is also easy and fast when using the dispenser.

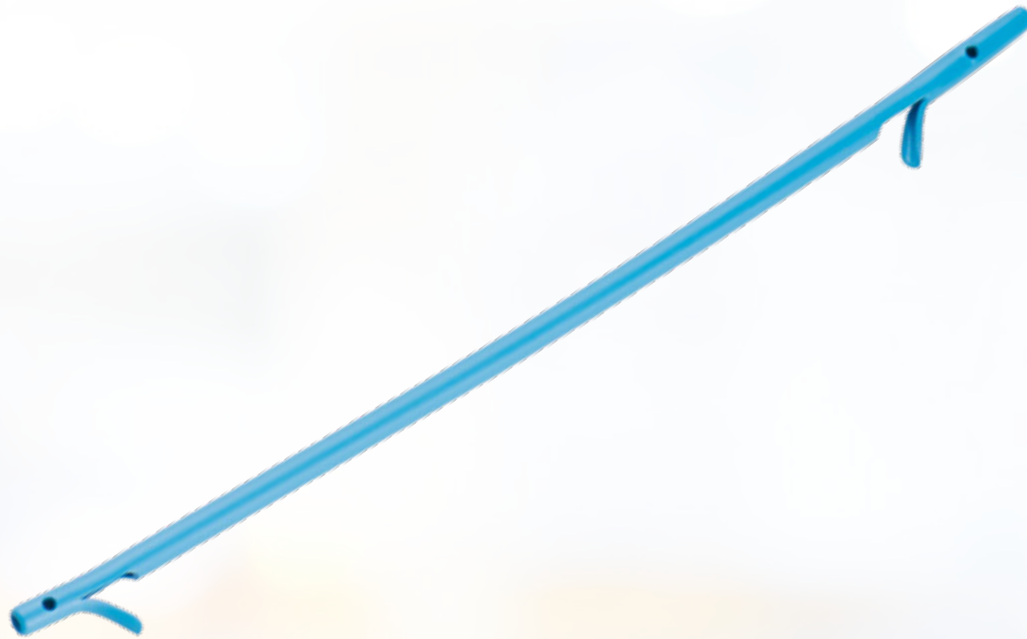


Dispenser guide wires

SPECIFICATIONS

REF	Ø inches	Total length mm	Tip length mm	Tip form	Set-up	Covering
CLASSIC GUIDE WIRE						
600382-5	0.035"	4200	130	straight	hydrophilic, radiopaque	extra stiff \pm 0.035"
HYDRO-SLIDE GUIDE WIRE						
MTN-BM-89/45-A	0.035"	4500	60	straight	hydrophilic, radiopaque	blue-yellow
MTN-BM-89/45-A-J	0.035"	4500	60	J-form	hydrophilic, radiopaque	blue-yellow
MTN-BM-63/45-A	0.025"	4500	60	straight	hydrophilic, radiopaque	blue-yellow
MTN-BM-63/45-A-S	0.025"	4500	60	straight	hydrophilic, radiopaque	extra stiff \pm 0.035"
MTN-BM-63/45-A-J	0.025"	4500	60	J-form	hydrophilic, radiopaque	blue-yellow
MTN-BM-63/45-A-J-S	0.025"	4500	30	J-form	hydrophilic, radiopaque	extra stiff \pm 0.035"
MTN-BM-53/45-A	0.021"	4500	60	straight	hydrophilic, radiopaque	blue-yellow
MTN-BM-45/45-A	0.018"	4500	60	straight	hydrophilic, radiopaque	blue-yellow

Packaging unit: Classic guide wire: 1 piece, Hydro-Slide guide wire: 2 pieces



PLASTIC BILE DUCT STENTS

MAXIMUM DRAINAGE, MAXIMUM HOLD

MICRO-TECH offers a comprehensive range of plastic stents for short and medium-term drainage in the bile duct. The stents are available in different shapes, lengths and diameters. Thus, the ideal stent is available for each indication. The high-quality PE-/PTFE-material of the stents ensures reliable drainage and adapts optimally

to the anatomy of the patient. Flaps at the ends of the stents also ensure a secure hold with minimal migration. For rapid and safe implantation, the stents are available both individually and on pre-loaded systems. In addition, MICRO-TECH also offers introduction-systems in all relevant sizes.

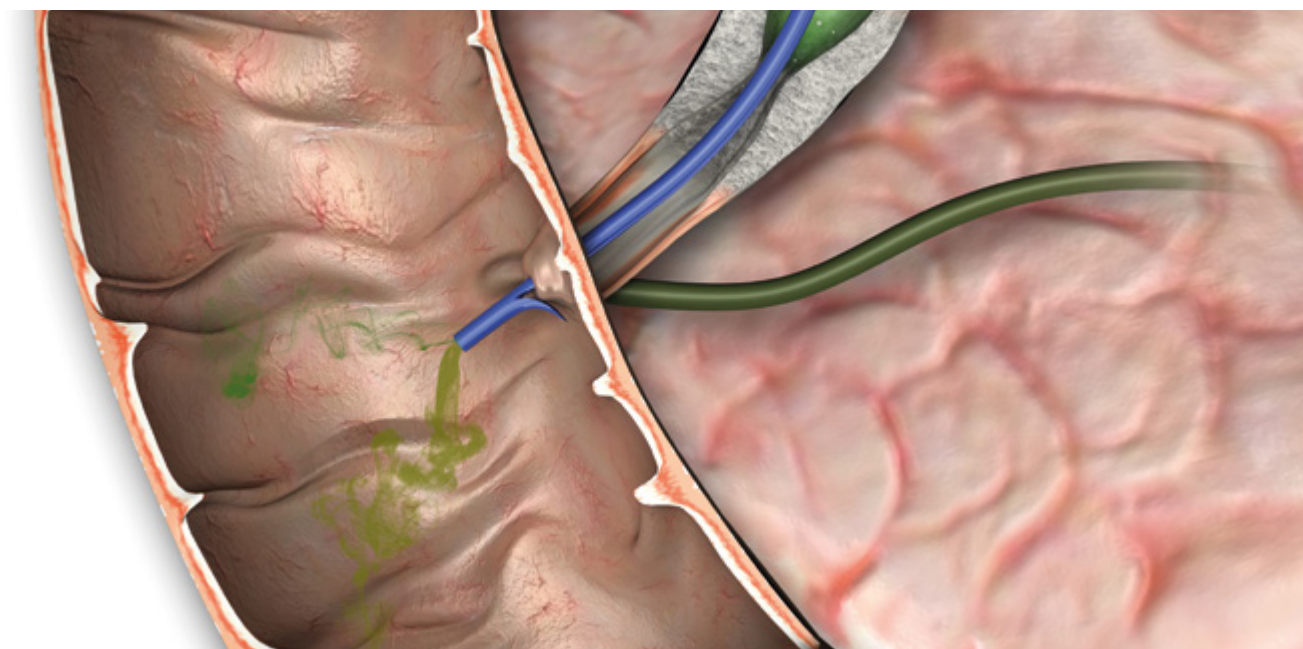
SPECIFIC CHARACTERISTICS

- Different shapes: straight, curved, angled, pigtail, double-pigtail
- Optimum flow rate
- Ideal adaptation to anatomy
- Safe hold, minimal migration
- Available single-packed or pre-loaded on introduction-system
- High x-ray visibility



Pre-loaded stent

System handle



SPECIFICATIONS

STENT STRAIGHT



- Shape: straight
- 2 flaps
- 2 side-holes
- X-ray visible
- Material: PE

Working length	Diameter bile duct prosthesis			
	7 Fr.	8.5 Fr.	10 Fr.	11.5 Fr.
5 cm	BPDS-31114-0705	BPDS-31114-0805	BPDS-31114-1005	BPDS-31114-1105
6 cm	BPDS-31114-0706	BPDS-31114-0806	BPDS-31114-1006	BPDS-31114-1106
7 cm	BPDS-31114-0707	BPDS-31114-0807	BPDS-31114-1007	BPDS-31114-1107
8 cm	BPDS-31114-0708	BPDS-31114-0808	BPDS-31114-1008	BPDS-31114-1108
9 cm	BPDS-31114-0709	BPDS-31114-0809	BPDS-31114-1009	BPDS-31114-1109
10 cm	BPDS-31114-0710	BPDS-31114-0810	BPDS-31114-1010	BPDS-31114-1110
11 cm	BPDS-31114-0711	BPDS-31114-0811	BPDS-31114-1011	BPDS-31114-1111
12 cm	BPDS-31114-0712	BPDS-31114-0812	BPDS-31114-1012	BPDS-31114-1112
13 cm	BPDS-31114-0713	BPDS-31114-0813	BPDS-31114-1013	BPDS-31114-1113
14 cm	BPDS-31114-0714	BPDS-31114-0814	BPDS-31114-1014	BPDS-31114-1114
15 cm	BPDS-31114-0715	BPDS-31114-0815	BPDS-31114-1015	BPDS-31114-1115

INTRODUCER-SYSTEMS WITHOUT STENT

SPECIFICATIONS

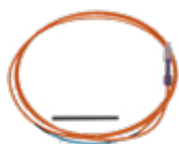


- One step introducer-system
- X-ray visible

New: Extended guide catheter

REF	Ø catheter	Guide catheter	Introducer length
BPDI-0740/22	7 Fr.	40 cm	220 cm
BPDI-0840/22	8.5 Fr.	40 cm	220 cm
BPDI-1040/22	10 Fr.	40 cm	220 cm
BPDI-1140/22	11.5 Fr.	40 cm	220 cm

INTRODUCER-SYSTEMS WITH PRE-LOADED STENT



- One step introducer-system
- X-ray visible

SPECIFICATIONS

STENT STRAIGHT



- Shape: straight
- 2 flaps
- 2 side-holes
- X-ray visible
- Material: PE

REF	Ø catheter	Stent working/ total length	Introducer length
BPDS-31114-0805/22	8.5 Fr.	5 / 7 cm	220 cm
BPDS-31114-0807/22	8.5 Fr.	7 / 9 cm	220 cm
BPDS-31114-0809/22	8.5 Fr.	9 / 11 cm	220 cm
BPDS-31114-0811/22	8.5 Fr.	11 / 13 cm	220 cm
BPDS-31114-1005/22	10 Fr.	5 / 7 cm	220 cm
BPDS-31114-1007/22	10 Fr.	7 / 9 cm	220 cm
BPDS-31114-1009/22	10 Fr.	9 / 11 cm	220 cm
BPDS-31114-1011/22	10 Fr.	11 / 13 cm	220 cm

SPECIFICATIONS

STENT CURVED



- Shape: 15° curved
- 2 flaps
- 2 side-holes
- X-ray visible
- Material: PE

REF	Ø catheter	Stent working/ total length	Introducer length
BPDS-32114-0805/22	8.5 Fr.	5 / 7 cm	220 cm
BPDS-32114-0807/22	8.5 Fr.	7 / 9 cm	220 cm
BPDS-32114-0809/22	8.5 Fr.	9 / 11 cm	220 cm
BPDS-32114-0811/22	8.5 Fr.	11 / 13 cm	220 cm
BPDS-32114-1005/22	10 Fr.	5 / 7 cm	220 cm
BPDS-32114-1007/22	10 Fr.	7 / 9 cm	220 cm
BPDS-32114-1009/22	10 Fr.	9 / 11 cm	220 cm
BPDS-32114-1011/22	10 Fr.	11 / 13 cm	220 cm